



University of Nevada  
Cooperative Extension

SP-08-15

# **COMPLEX 2030 PROPOSAL ESTIMATED ECONOMIC IMPACTS ON NORTHERN NYE AND ESMERALDA COUNTIES**

**INCLUDING:  
TONOPAH  
ROUND MOUNTAIN  
MANHATTAN  
SILVERPEAK  
GOLDFIELD**

**ORONOCO TEST RANGE  
FIELD NO. 1  
GAMMA NATIONAL LABORATORIES  
FOR THE  
DEPARTMENT OF ENERGY**

**DECEMBER 2007**



# Complex 2030 Proposal

## Estimated Economic Impacts on Northern Nye and Esmeralda Counties

Including:

Tonopah  
Round Mountain  
Manhattan  
Silverpeak  
Goldfield

Prepared by:

Buddy Borden  
Tom Harris  
Elizabeth Fadali  
Amy Meier

**Buddy Borden is an Area Extension Specialist in Community and Economic Development, University of Nevada Cooperative Extension, University of Nevada, Reno**

**Tom Harris is Professor & Director, University Center for Economic Development, University of Nevada, Reno and a State Specialist, University of Nevada Cooperative Extension**

**Elizabeth Fadali is a Research Associate in the University Center for Economic Development in the Department of Resource Economics at the University of Nevada, Reno**

**Amy Meier is an Extension Educator, Northern Nye County, University of Nevada Cooperative Extension**

## Acknowledgments

This report is intended to assist county and community leaders in Nye and Esmeralda County to better understand the economic contributions that the Tonopah Test Range has on Northern Nye and Esmeralda Communities. The research team would like to express a special thanks to Nye County for the financial support to complete this study. Finally, the program team would also like to thank all the volunteers and residents that participated in the household survey.

Copyright © 2008, University of Nevada Cooperative Extension.  
All rights reserved. No part of this publication may be reproduced, modified, published, transmitted, used, displayed, stored in a retrieval system, or transmitted in any form or by any means electronic, mechanical, photocopy, recording or otherwise without the prior written permission of the publisher and authoring agency.

## Table of Contents

Introduction .....	6
TTR Conceptual Economic Model .....	7
Social and Economic Characteristics.....	9
CNRSA by Zip Code .....	10
Population .....	11
Age .....	12
Households .....	16
Families .....	18
Education .....	20
Employment .....	22
Income .....	29
Household Survey Results .....	34
TTR Economic Impact Estimates .....	38
Per \$1,000,000 of Operating Expenditures .....	38
Impact Scenarios .....	40
Summary Total Impacts .....	41
100% Reduction .....	42
75% Reduction .....	42
50% Reduction .....	43
25% Reduction .....	43
Conclusions and Discussion .....	44
Appendix – Household Surveys .....	46

## List of Tables

Table 1.	Population Trend, 2000 and 2007 .....	11
Table 2.	Percent Age Distribution by Community, CNRSA, County, State and U.S., 2000 .....	13
Table 3.	Percent Age Distribution by Community, CNRSA, County, State and U.S., 2007.....	14
Table 4.	Median Age Trends by Community, CNRSA, County, State, and U.S., 2000 and 2007 .....	15
Table 5.	Household Trends by Community, CNRSA, County, State, and U.S., 2000 and 2007 .....	16
Table 6.	Average Household Size Trends by Community, CNRSA, County, State, and U.S., 2000 and 2007 .....	17
Table 7.	Number of Families Trends by Community, CNRSA, County, State, and U.S., 2000 and 2007 .....	18
Table 8.	Average Family Size Trends by Community, CNRSA, County, State, and U.S., 2000 and 2007 .....	19
Table 9.	Percentage of Population 3+ by School Enrollment, 2000 .....	20
Table 10.	Percentage of Population 25+ by Highest Level of Educational Attainment, 2000 .....	21
Table 11.	Percentage of Age 16+ Labor Force, 2000 .....	22
Table 12.	Percentage of Labor Force 16+ Employment Status, 2007 .....	23
Table 13.	Total Employment Trends by Community, CNRSA, County, State, and U.S., 2000 and 2007 .....	24
Table 14.	Percent of Employment by Industry, 2007 .....	26
Table 15.	Percent Employment by Occupation, 2007 .....	27
Table 16.	Employment Migration Estimates, 2007 .....	28
Table 17.	Average Household Income 2000 and 2007 .....	29
Table 18.	Median Household Income 2000 and 2007 .....	30
Table 19.	Per Capita Income 2000 and 2007.....	31
Table 20.	Percent of Households by Income 2000 .....	32
Table 21.	Percent of Households by Income 2007 .....	33
Table 22.	Residence of Survey Respondents .....	35
Table 23.	Commuting Patterns by Survey Respondents .....	35
Table 24.	Key Characteristics Comparison of TTR and Non-TTR Household Respondents .....	36
Table 25.	Education of Respondent for TTR Household and Non-TTR Household .....	36
Table 26.	Respondent Businesses Connected to TTR.....	36
Table 27.	Estimated Monthly Household Expenditure Patterns for TTR Households and Non-TTR Households .....	37
Table 28.	Estimated Economic Impacts from \$1,000,000 in TTR Operational Expenditures .....	39
Table 29.	Top 10 Linked Sectors Through Secondary Impacts (Indirect & Induced) Generated from \$1,000,000 in Operational Expenditures .....	39

## List of Tables (cont...)

Table 30. TTR Impact Scenarios. ....	40
Table 31. Summary Estimated Impacts from TTR Operations on the CNRSA. Four Operational Scenarios – 100% reduction/No Change, 75% Reduction, 50% Reduction, 25% Reduction .....	41
Table 32. Estimated Economic Impact on CNRSA from a 100% Reduction in TTR Annual Operating Expenditures .....	42
Table 33. Estimated Economic Impact on CNRSA from a 75% Reduction in TTR Annual Operating Expenditures .....	42
Table 34. Estimated Economic Impact on CNRSA from a 50% Reduction in TTR Annual Operating Expenditures .....	43
Table 35. Estimated Economic Impact on CNRSA from a 25% Reduction in TTR Annual Operating Expenditures .....	43

## List of Figures

Figure 1. Overview of Community Economic System .....	8
Figure 2. Population Trends, 2000 and 2007 .....	11
Figure 3. Total CNRSA Percent Age Distribution, 2000 .....	12
Figure 4. Total CNRSA Percent Age Distribution, 2007 .....	12
Figure 5. Median Age Trends by Community, CNRSA, County, State, and U.S., 2000 and 2007 .....	15
Figure 6. Household Trends by Community, & CNRSA, 2000 and 2007 .....	16
Figure 7. Average Household Size Trends by Community, CNRSA, County, State, and U.S., 2000 and 2007 .....	17
Figure 8. Number of Families Trends by Community, & CNRSA, 2000 and 2007 .....	18
Figure 9. Average Family Size Trends by Community, CNRSA, County, State, and U.S., 2000 and 2007 .....	19
Figure 10. Percentage of CNRSA Population 3+ by School Enrollment, 2000 ...	20
Figure 11. CNRSA Population 25+ by Highest Level of Educational Attainment, 2000 .....	21
Figure 12. CNRSA Percentage of Age 16+ in Labor Force, 2000 .....	22
Figure 13. Percentage of Labor Force 16+ in CNRSA Employment Status, 2007.	23
Figure 14. Total Employment Trends by Community and CNRSA, 2000 and 2007 .....	24
Figure 15. Percent of CNRSA Employment by Economic Sector, 2007 .....	25
Figure 16. CNRSA Employment by Occupation, 2007 .....	27
Figure 17. CNRSA Employment Migration Estimates, 2007 .....	28
Figure 18. Average Household Income, 2000 and 2004 .....	29
Figure 19. Median Household Income, 2000 and 2004 .....	30
Figure 20. Per Capita Income, 2000 and 2007 .....	31

## **INTRODUCTION**

The Tonopah Test Range (TTR) has been an integral segment of the Central Nevada economy for areas around Tonopah and Esmeralda County. Open in 1957 as a testing site for the United States Department of Energy, TTR has been administered for most of its existence by Sandia National Laboratories. TTR is located in the northern portion of the Nevada Test and Training Range (NTTR) and covers approximately 360 acres. The TTR facilities are located approximately 40 miles southwest of the county seat of Nye County or the community of Tonopah.

However, the National Nuclear Security Administration (NNSA) has developed a 2030 Complex Plan which calls for the consolidation of existing nuclear testing facilities. One consideration of the 2030 Complex plan is for the closure of TTR facilities. The primary objective, therefore, of the study is to estimate the socio-economic impacts of TTR activities on the Central Nevada regional economy. Central Nevada Regional Study Area is defined as the communities of Tonopah, Round Mountain, Manhattan, Goldfield and Silverpeak and will be referred as CNRSA throughout the report. Specific objectives of the study are:

- (1) To complete a socio-economic trend analysis of the CNRSA;
- (2) To discuss community economics and input-output modeling;
- (3) To analyze the workforce at TTR and its impact on the CNRSA economy; and
- (4) To estimate the economic, employment and household income impacts of TTR on the CNRSA economy.

The following report is divided into four sections to assist county and community leaders in the CNRSA to better understand the social and economic contributions that TTR has on the regional economy. Sections include:

- (1) TTR Conceptual Economic Model
- (2) CNRSA Social and Economic Characteristics
- (3) TTR Household and Non TTR Household Survey Results
- (4) Estimated Economic Impacts of TTR Current and Proposed Operational Changes on CNRSA.



## **TTR CONCEPTUAL ECONOMIC MODEL**

Figure 1 illustrates the major dollar flows of goods and services in any economy. The foundation of a county's economy is those businesses which sell some or all of their goods and services to buyers outside of the county. Such a business is a basic industry. The flow of products out of, and dollars into, a county is represented by the two arrows in the upper right portion of Figure 1. To produce these goods and services for "export" outside the county, the basic industry purchases inputs from outside of the county (upper left portion of Figure 1), labor from the residents or "households" of the county (left side of Figure 1), and inputs from service industries located within the county (right side of Figure 1). The flow of labor, goods and services in the county is completed by households using their earnings to purchase goods and services from the county's service industries and from outside the county (bottom of Figure 1). It is evident from the interrelationships illustrated in Figure 1 that a change in any one segment of a county's economy will have reverberations throughout the entire economic system of the county.

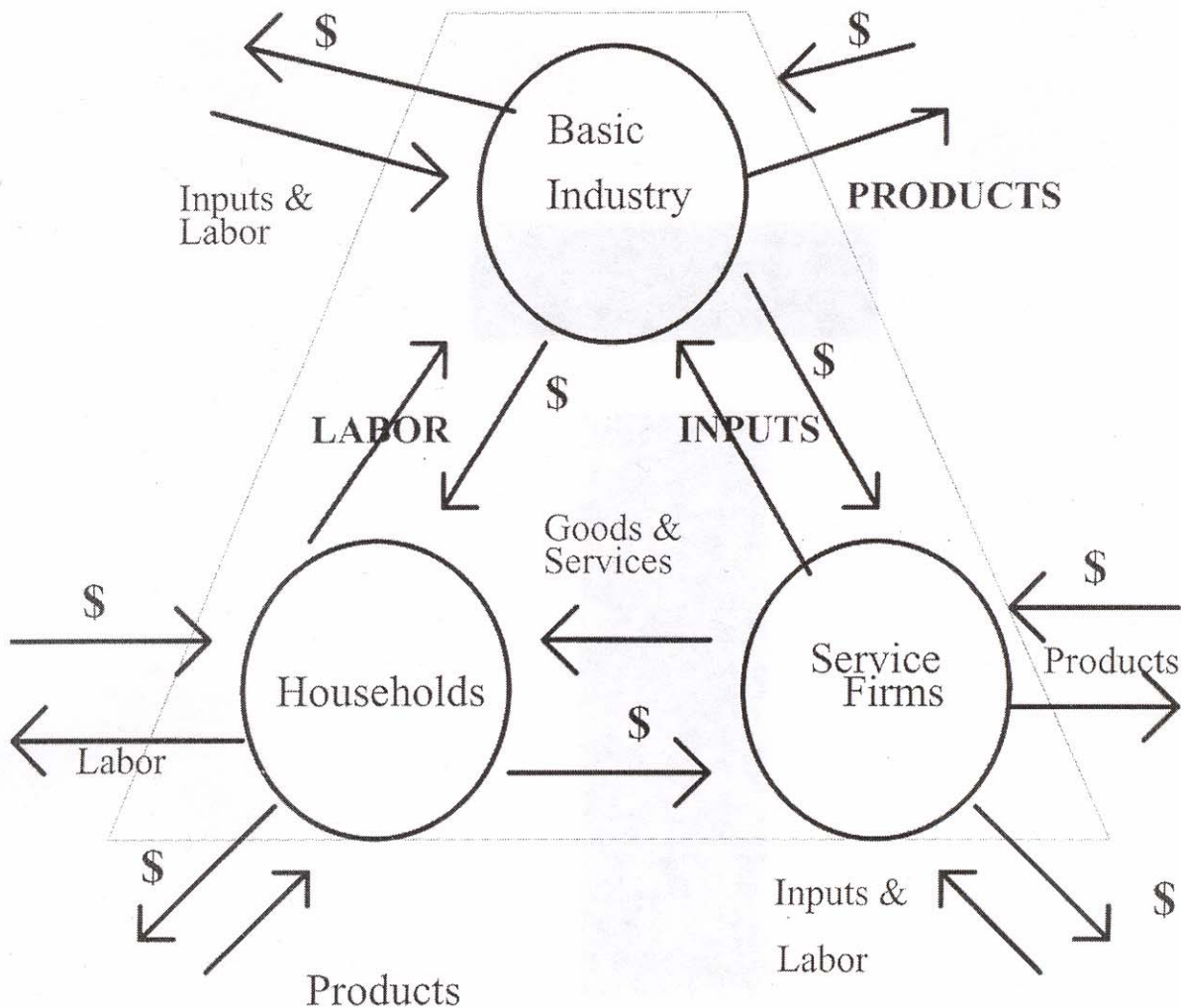
Consider, for instance, the activities of the Tonopah Test Range, and its impacts on the local economy. The Tonopah Test Range activities can be considered a basic industry as it draws dollars from outside the area. These dollars may hire a few people from the household sector such as laborers to work at the Tonopah Test Range. However, most of the local economic linkages are from the Tonopah Test Range's purchases of goods and services from the service sectors. These include businesses such as restaurants, gas stations, hotels and other retail businesses. As earnings increase in these businesses, they will hire additional people and buy more inputs from other businesses. Thus the change in the economic base works its way throughout the entire local economy.

The total impact of a change in the economy consists of direct, indirect and induced impacts. Direct impacts are the changes in the activities of the impacting industry, such as the reduction of operations by the Tonopah Test Range. The impacting business, such as the Tonopah Test Range, changes its purchases of inputs as a result of the direct impact. This produces an indirect impact in the business sectors. Both the

direct and indirect impacts change the flow of dollars to the community's households. The local households alter their consumption accordingly. The effect of this change in local household consumption upon businesses in a county is referred to as an induced impact.

A measure is needed that yields the effects created by an increase or decrease in economic activity. In economics, this measure is called the multiplier effect.

**Figure 1: Overview of Community Economic System**



## **SOCIAL AND ECONOMIC CHARACTERISTICS**

Social and economic characteristics of a community are one of the first steps in understanding the overall dynamics of a community. This is especially important when a community is experiencing change because it provides key information for planning and development purposes. This is the case in the Northern Nye (excluding Pahrump) and Esmeralda County region where growth has been stagnant over the last several years. However, current proposals to change operations at the Tonopah Test Range by the year 2030 could have significant implications on the overall population make-up and economic conditions.

The purpose of this section of the report is to provide the communities in the CNRSA with a baseline understanding of the most current social and economic characteristics and trends. Communities that define the CNRSA are: Tonopah, Round Mountain, Manhattan, Goldfield and Silverpeak. Understanding these characteristics and how they are changing will also provide an understanding as to how these communities are linked or dependant on one another. For example, what are the demographics of the population located next to the CNRSA, where are they living and where are they working? These characteristics are very important when considering community and economic development planning and assessment.

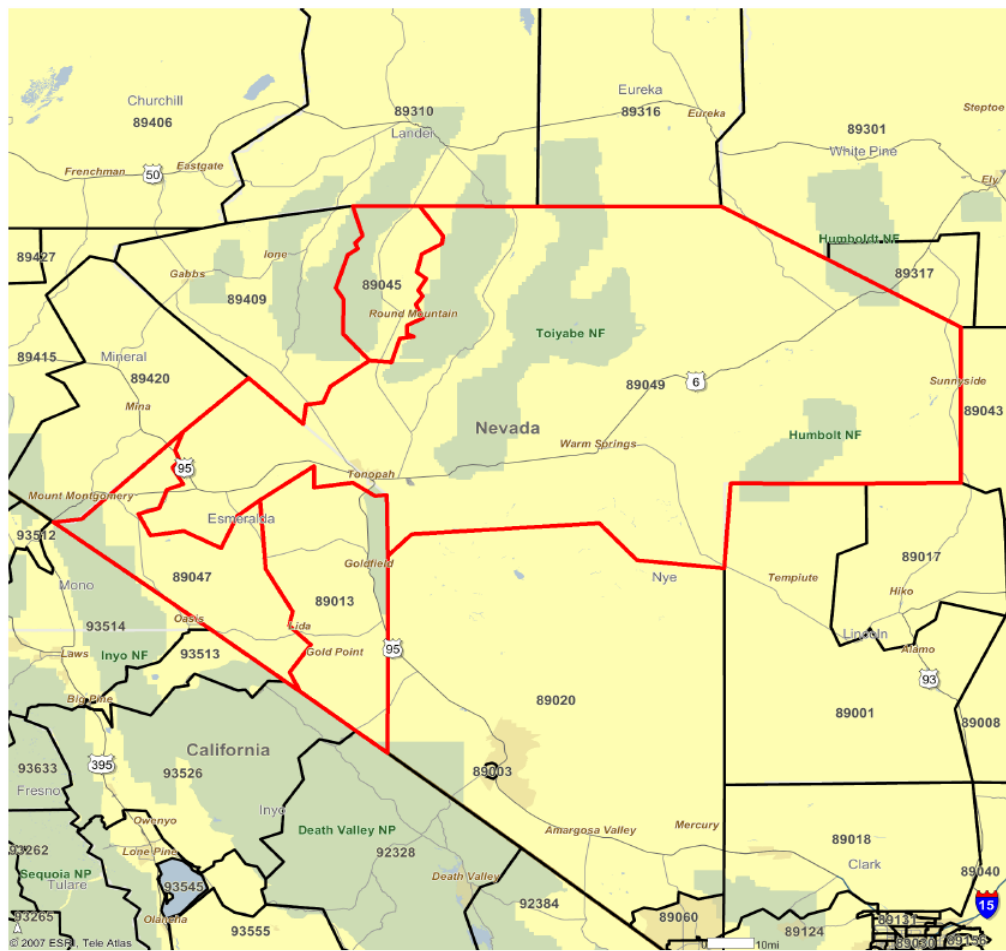
This analysis is divided into two types of characteristic areas: social and economic. Social characteristic variables include population, age, households, families and education. Economic characteristic variables include employment and income. Sub-variables for each category are also presented. For example, education also includes education enrollment and highest level of education. Each variable is analyzed using the most recent data and is compared to other communities in the CNRSA, their respective county, state and United States.

Historically, sub-county social demographic and economic data may have been difficult to access. However, with the development of technology and the Internet this data has become more easily accessible to the benefit of individual communities (i.e. zip code, census tract, etc.). For this study, all data was collected on zip codes and is the best available data at the time of the analysis. In some instances, the best available data was the year 2000. When available, 2007 estimates are also included.

Secondary data published by various federal and private sources is used in this analysis. First, the Bureau of Census is used for 2000 estimates for all social and housing characteristics. Second, ERSI, a private business providing socioeconomic and trade area data, is used for 2007 estimates. Third, the County Business Patterns is used for zip code business employment data. Finally, the Bureau of Economic Analysis is used for county, state and national employment.

Basic frequency trend analysis was performed on all variables. Each individual community *defined by zip code area*, CNRSA, respective county and state and United States is analyzed for each variable. This comparison provides a good benchmark to see how an individual community is performing compared to other communities and areas, the CNRSA or United States. Tables, graphs and summary findings are presented for each variable. Results are presented in the following pages.

#### CNRSA by Zip Code (outline in red)



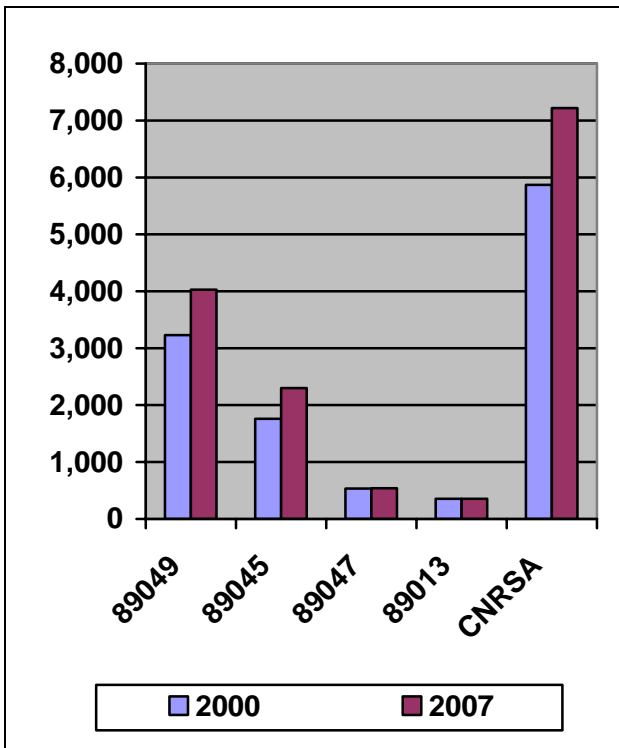
## POPULATION

Table 1. Population Trend, 2000 and 2007.

Community (Zip Code)	2000	2007	Percent Change	Number Change
Tonopah (89049)	3,229	4,030	+24.81	+801
Round Mountain (89045)	1,756	2,297	+30.81	+541
Silverpeak (89047)	531	541	+1.88	+10
Goldfield (89013)	355	353	-0.56	-2
Total CNRSA	5,871	7,221	+22.99	+1,350
Nye County	32,485	42,728	+31.53	+10,243
Esmeralda County	971	979	+0.82	+8
Nevada	1,998,257	2,645,277	+32.38	+647,020
U.S.	281,421,906	306,348,230	+8.86	+24,926,324

Source: 2000 Census of Population and Housing. ERSI Forecast for 2007.

Figure 2. Population Trends, 2000 and 2007.



**Summary:**

- ✚ Between 2000 and 2007, the total CNRSA population increased by 1,350 people.
- ✚ Over 55 percent of the CNRSA population is located in Tonopah (89049).
- ✚ Almost every community in the CNRSA has experienced growth in population with Round Mountain (89045) experiencing the largest percentage growth at +30.81%, followed by Tonopah (89049) at 24.81% and Silverpeak at 1.88%.
- ✚ Goldfield (89013) population has not changed with approximately 970-980 people.

## AGE

Figure 3. Total CNRSA Percent Age Distribution, 2000.

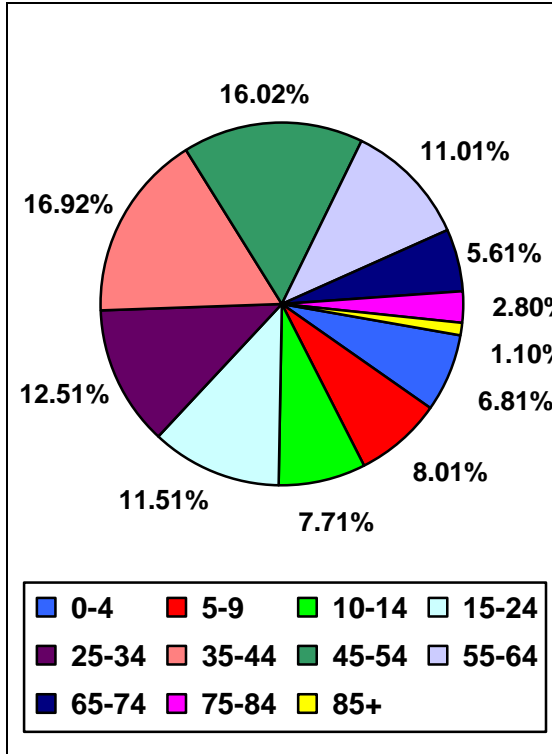
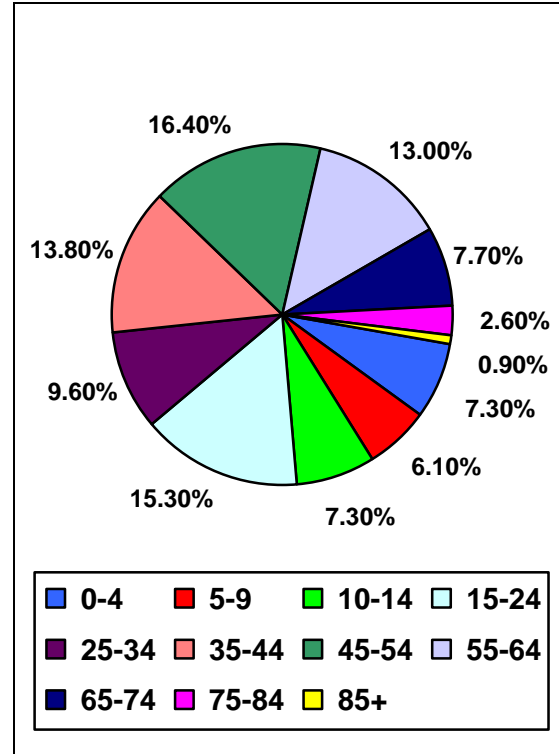


Figure 4. Total CNRSA Percent Age Distribution, 2007.



### Summary

- ✚ Age distribution in the CNRSA has changed between 2000 and 2007 by:
  - Ages 0 – 14 represent approximately 22.3% of the CNRSA population in 2000 versus 20.4% in 2007
  - Ages 15-24 represent approximately 11.5% of the CNRSA population in 2000 versus 15.3% in 2007
  - Ages 24-44 represent approximately 28.4% of the CNRSA population in 2000 versus 29.4% in 2007
  - Ages 45-54 represent approximately 16.0% of the CNRSA population in 2000 versus 16.4% in 2007
  - Ages 55+ represent approximately 20.5% of the CNRSA population in 2000 versus 24.2% in 2007

Table 2. Percent Age Distribution by Community, CNRSA, County, State and U.S., 2000.

	0 - 4	5 - 9	10 - 14	15 - 24	25 - 34	35 - 44	45 - 54	55 - 64	65 - 74	75 - 84	85+	Total
<b>PERCENT</b>												
Tonopah (89049)	7.0%	7.8%	7.0%	10.8%	12.4%	18.1%	16.8%	10.3%	5.5%	2.9%	1.2%	100.0%
Round Mt. (89045)	7.8%	9.5%	9.8%	13.1%	14.3%	16.3%	14.4%	9.6%	3.2%	1.4%	0.6%	100.0%
Silverpeak (89047)	4.5%	6.8%	7.3%	12.0%	10.4%	15.1%	15.3%	13.9%	9.4%	4.0%	1.3%	100.0%
Goldfield (89013)	4.2%	4.2%	3.9%	9.3%	8.4%	12.1%	17.1%	20.5%	11.5%	6.7%	2.0%	100.0%
Total CNRSA	6.8%	8.0%	7.7%	11.5%	12.5%	16.9%	16.0%	11.0%	5.6%	2.8%	1.1%	100.0%
Nye County	6.0%	6.8%	7.1%	9.3%	9.5%	14.5%	14.1%	14.4%	12.2%	5.3%	0.9%	100.0%
Esmeralda County	4.3%	5.7%	5.8%	10.7%	9.6%	13.8%	16.1%	16.9%	10.3%	5.3%	1.6%	100.0%
Nevada	7.3%	7.5%	7.0%	12.9%	15.3%	16.1%	13.5%	9.5%	6.6%	3.5%	0.9%	100.0%
U.S.	6.8%	7.3%	7.3%	13.9%	14.2%	16.0%	13.4%	8.6%	6.5%	4.4%	1.5%	100.0%
<b>TOTAL POPULATION</b>												
Tonopah (89049)												3,230
Round Mountain (89045)												1,754
Silverpeak (89047)												531
Goldfield (89013)												356
Total CNRSA												5,871

Source: 2000 Census of Population and Housing.

Table 3. Percent Age Distribution by Community, CNRSA, County, State and U.S., 2007.

	0 - 4	5 - 9	10 - 14	15 - 24	25 - 34	35 - 44	45 - 54	55 - 64	65 - 74	75 - 84	85+	Total
<b>PERCENT</b>												
Tonopah (89049)	7.2%	6.5%	7.3%	13.5%	9.4%	14.0%	18.3%	12.6%	7.3%	2.9%	1.0%	100.0%
Round Mnt. (89045)	8.5%	6.4%	8.0%	20.1%	10.1%	14.6%	13.5%	12.2%	4.9%	1.2%	0.6%	100.0%
Silverpeak (89047)	4.8%	3.9%	6.1%	12.2%	10.4%	11.5%	15.9%	15.7%	13.9%	4.4%	1.3%	100.0%
Goldfield (89013)	3.7%	3.7%	4.2%	8.7%	7.9%	9.3%	15.0%	19.0%	20.7%	6.5%	1.1%	100.0%
Total CNRSA	7.3%	6.1%	7.3%	15.3%	9.6%	13.8%	16.4%	13.0%	7.7%	2.6%	0.9%	100.0%
Nye County	5.8%	5.2%	5.9%	12.5%	7.0%	11.6%	15.1%	16.3%	13.1%	6.2%	1.3%	100.0%
Esmeralda County	4.3%	3.8%	5.2%	10.6%	9.2%	10.5%	15.6%	17.2%	17.0%	5.3%	1.3%	100.0%
Nevada	7.3%	6.6%	6.9%	12.9%	13.8%	15.1%	13.9%	11.5%	7.1%	3.9%	1.1%	100.0%
U.S.	6.9%	6.5%	6.8%	14.1%	13.2%	14.4%	14.6%	10.8%	6.3%	4.4%	1.9%	100.0%
<b>TOTAL POPULATION</b>												
Tonopah (89049)												4,030
Round Mountain (89045)												2,297
Silverpeak (89047)												541
Goldfield (89013)												353
Total CNRSA												7,221

Source: 2000 Census of Population and Housing. ERSI Forecast for 2007.

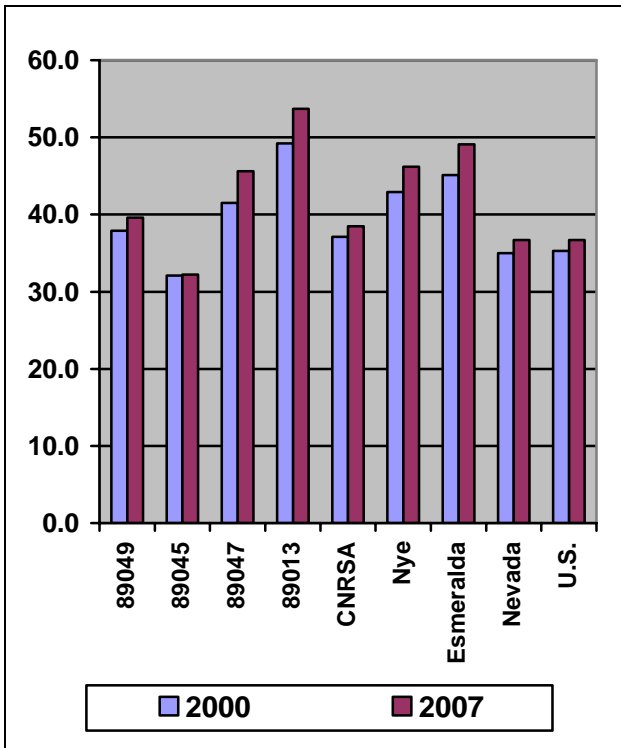


Table 4. Median Age Trends by Community, CNRSA, County, State and U.S., 2000 and 2007.

Community (Zip Code)	2000	2007	Percent Change
Tonopah (89049)	37.9	39.6	4.49%
Round Mountain (89045)	32.1	32.2	0.31%
Silverpeak (89047)	41.5	45.6	9.88%
Goldfield (89013)	49.2	53.7	9.15%
Total CNRSA	37.1	38.5	3.77%
Nye County	42.9	46.2	7.69%
Esmeralda County	45.1	49.1	8.87%
Nevada	35.0	36.7	4.86%
U.S.	35.3	36.7	3.97%

Source: 2000 Census of Population and Housing. ERSI Forecast for 2007.

Figure 5. Median Age Trends by Community, CNRSA, County, State, and U.S., 2000 and 2007.



**Summary:**

- Between 2000 and 2007, median age had increased in the CNRSA 3.77%. This trend is less than the rate of increase at the respective county, state and U.S. level.
- Silverpeak (89047) and Goldfield (89013) consistently report the highest median age in the CNRSA.
- Round Mountain (89045) and Tonopah (89049) consistently report the lowest median age in the CNRSA.

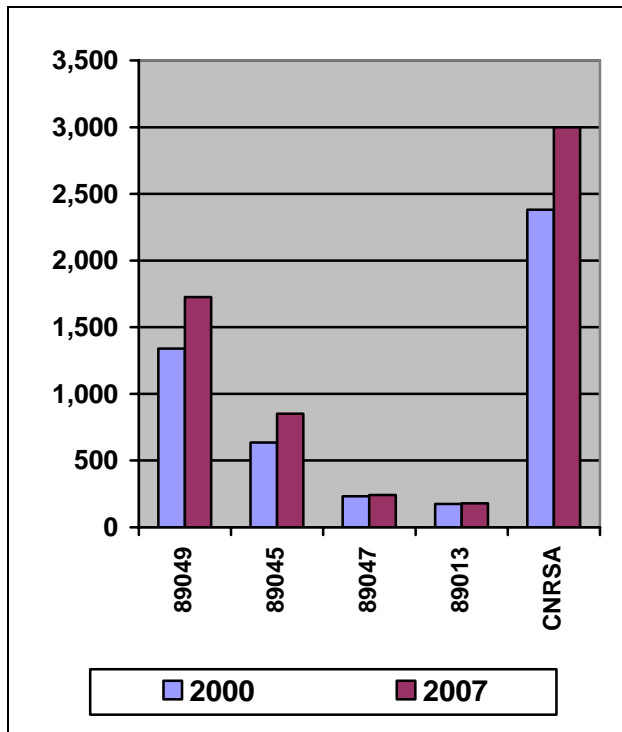
## HOUSEHOLDS

Table 5. Household Trends by Community, CNRSA, County, State and U.S., 2000 and 2007.

Community (Zip Code)	2000	2007	Percent Change	Number Change
Tonopah (89049)	1,339	1,726	+28.90%	+387
Round Mountain (89045)	635	851	+34.02%	+216
Silverpeak (89047)	233	243	+4.29%	+10
Goldfield (89013)	174	179	+2.87%	+5
Total CNRSA	2,381	2,999	+25.96%	+618
Nye County	13,309	17,754	+33.40%	+4,445
Esmeralda County	455	471	+3.52%	+16
Nevada	751,165	994,525	+32.40%	+243,360
U.S.	105,480,101	115,337,039	+9.34%	+9,856,938

Source: 2000 Census of Population and Housing. ERSI Forecast for 2007.

Figure 6. Household Trends by Community, & CNRSA, 2000 and 2007.



### Summary:

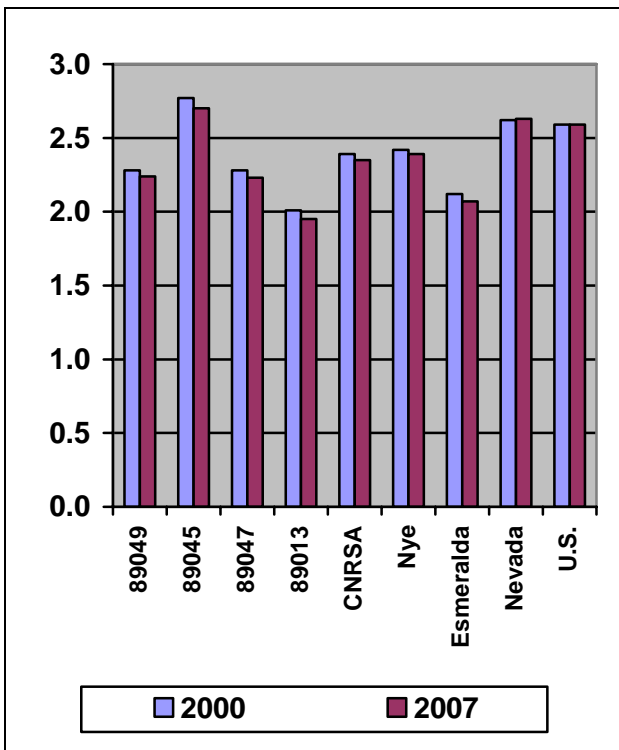
- ✚ Households are defined as total people living in a residence. This could include families, friends and acquaintances.
- ✚ Consistent with the largest population base, Tonopah (89049) has the largest number of households with over 1,726.
- ✚ Round Mountain (89045) reports the largest percentage increase in households at 34.02%, followed by Tonopah (89049) at +28.90 percent.

Table 6. Average Household Size Trends by Community, CNRSA, County, State and U.S., 2000 and 2007.

Community (Zip Code)	2000	2007	Percent Change
Tonopah (89049)	2.28	2.24	-1.75%
Round Mountain (89045)	2.77	2.70	-2.53%
Silverpeak (89047)	2.28	2.23	-2.19%
Goldfield (89013)	2.01	1.95	-2.99%
Total CNRSA	2.39	2.35	-1.67%
Nye County	2.42	2.39	-1.24%
Esmeralda County	2.12	2.07	-2.36%
Nevada	2.62	2.63	+0.38%
U.S.	2.59	2.59	0.00%

Source: 2000 Census of Population and Housing. ERSI Forecast for 2007.

Figure 7. Average Household Size Trends by Community, CNRSA, County, State and U.S., 2000 and 2007.



**Summary:**

- Between 2000 and 2007, average household size has slightly decreased at 1.67%.
- Consistent across communities in the CNRSA, the average household size has decreased at a percentage rate greater than respective counties, state and U.S.

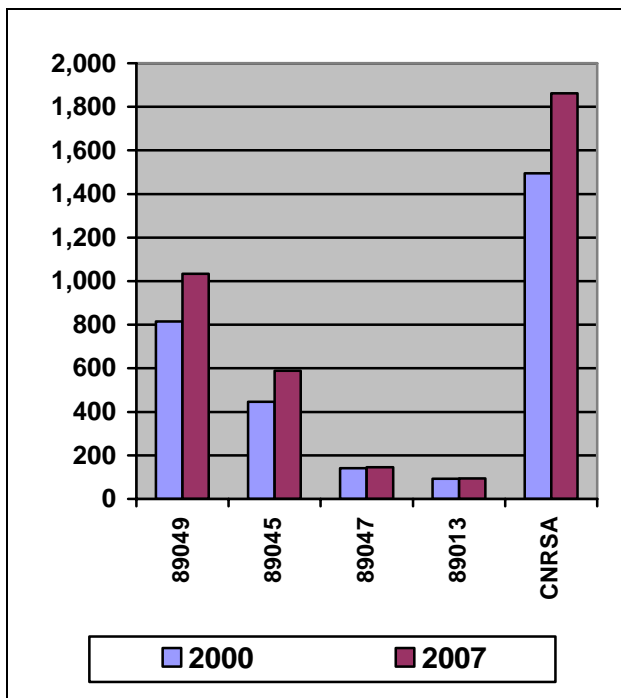
## FAMILIES

Table 7. Number of Families Trends by Community, CNRSA, County, State and U.S., 2000 and 2007.

Community (Zip Code)	2000	2007	Percent Change	Number Change
Tonopah (89049)	815	1,034	+26.87	+219
Round Mountain (89045)	446	589	+32.06	+143
Silverpeak (89047)	141	145	+2.84	+4
Goldfield (89013)	93	94	+1.08	+1
Total CNRSA	1,495	1,862	+24.55	+367
Nye County	9,068	11,961	+31.90	+2,893
Esmeralda County	260	265	+1.92	+5
Nevada	498,333	651,983	+30.83	+153,650
U.S.	71,787,347	77,236,852	+7.59	+5,449,505

Source: 2000 Census of Population and Housing. ERSI Forecast for 2007.

Figure 8. Number of Families Trends by Community, & CNRSA, 2000 and 2007.



### Summary:

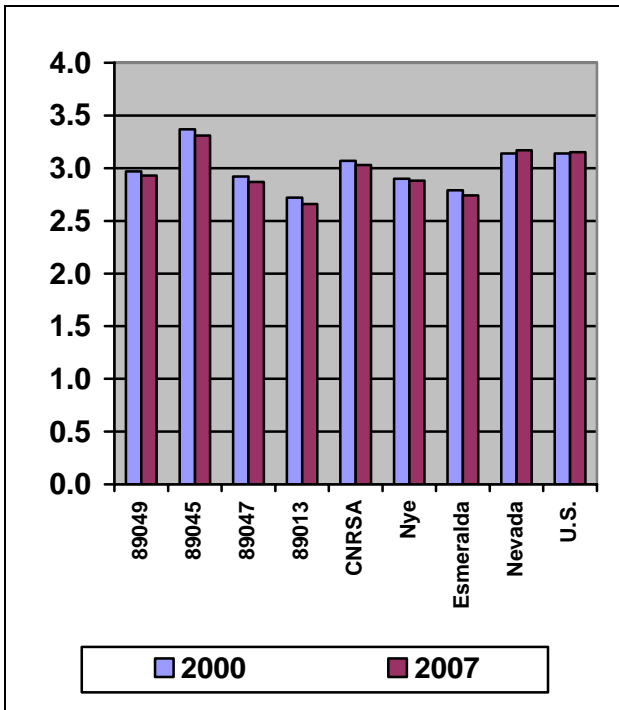
- + Families are defined as persons related by birth, marriage or adoption in a household.
- + Round Mountain (89045) reports the greatest percentage increase of family households in the CNRSA (+32.06%).
- + Largest concentration of families is located in Tonopah (89049).
- + Smallest concentration of families is located in Silverpeak (89047) and Goldfield (89013).

Table 8. Average Family Size Trends by Community, CNRSA, County, State and U.S., 2000 and 2007.

Community (Zip Code)	2000	2007	Percent Change
Tonopah (89049)	2.97	2.93	-1.35%
Round Mountain (89045)	3.37	3.31	-1.78%
Silverpeak (89047)	2.92	2.87	-1.71%
Goldfield (89013)	2.72	2.66	-2.21%
Total CNRSA	3.07	3.03	-1.30%
Nye County	2.90	2.88	-0.69%
Esmeralda County	2.79	2.74	-1.79%
Nevada	3.14	3.17	+0.96%
U.S.	3.14	3.15	+0.32%

Source: 2000 Census of Population and Housing. ERSI Forecast for 2007.

Figure 9. Average Family Size Trends by Community, CNRSA, County, State and U.S., 2000 and 2007.



**Summary:**

- Overall, the CNRSA average family size has decreased 1.30 percent between 2000 and 2007.
- Goldfield (89013) reports the largest percentage decrease in average family size (-2.21 percent).

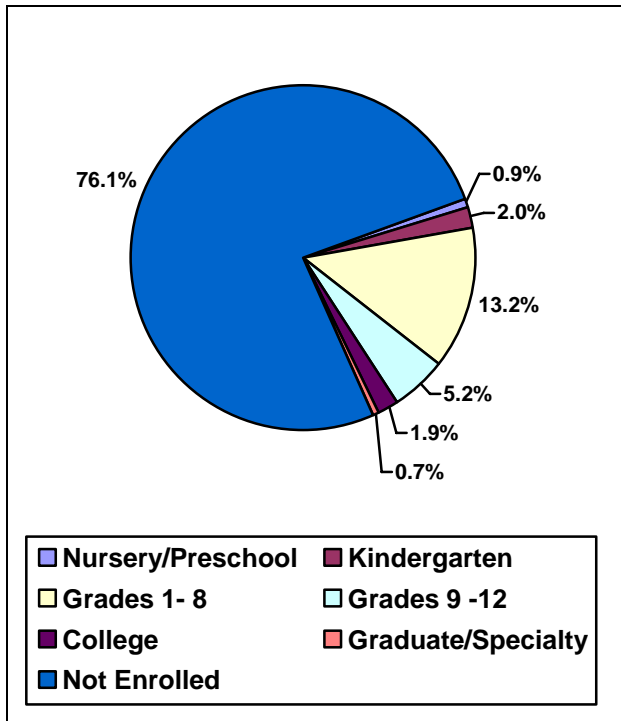
## EDUCATION

Table 9. Percentage of Population 3+ by School Enrollment, 2000.

Community (Zip Code)	Nursery/ Preschool	Kinder- garten	Grades 1 - 8	Grades 9 - 12	College	Graduate Specialty	Not Enrolled
Tonopah (89049)	1.4%	2.6%	10.9%	3.2%	1.9%	0.6%	79.4%
Round Mountain (89045)	0.0%	1.3%	19.2%	7.2%	1.8%	0.6%	69.9%
Silverpeak (89047)	1.4%	0.8%	13.7%	9.4%	0.6%	0.6%	73.6%
Goldfield (89013)	1.1%	1.1%	5.6%	7.5%	5.0%	2.2%	77.4%
Total CNRSA	0.9%	2.0%	13.2%	5.2%	1.9%	0.7%	76.0%
Nye County	0.9%	1.3%	11.7%	5.2%	1.6%	0.3%	78.9%
Esmeralda County	1.2%	0.8%	10.1%	8.5%	2.6%	1.5%	75.4%
Nevada	1.4%	1.6%	12.1%	5.5%	4.3%	0.9%	74.2%
U.S.	1.8%	1.5%	12.5%	6.1%	5.3%	1.2%	71.6%

Source: 2000 Census of Population and Housing.

Figure 10. Percentage of CNRSA Population 3+ by School Enrollment, 2000.



**Summary:**

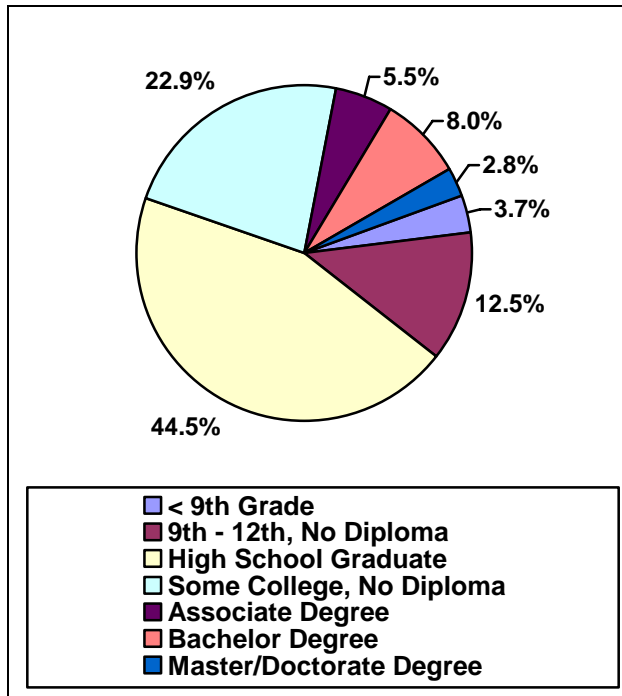
- Consistent across communities in the CNRSA, 70-80 percent of the total population ages 3+ is not enrolled in any type of education. This is also consistent at the county, state, and U.S. levels.
- Grades 1-8 have the greatest percentage of students for all communities except Goldfield that have a larger percentage of students in grades 9-12.

Table 10. Percentage of Population 25+ by Highest Level of Educational Attainment, 2000.

Community (Zip Code)	< 9 <sup>th</sup> Grade	9 <sup>th</sup> – 12 <sup>th</sup> No Diploma	High School Graduate	Some College No Diploma	Associate Degree	Bachelor Degree	Master/Doctorate Degree
Tonopah (89049)	3.1%	13.4%	46.7%	22.8%	5.1%	5.9%	2.9%
Round Mountain (89045)	3.1%	9.2%	39.7%	26.5%	5.5%	12.5%	3.5%
Silverpeak (89047)	9.5%	17.6%	41.6%	15.6%	6.6%	7.8%	1.2%
Goldfield (89013)	4.7%	10.8%	46.6%	19.9%	7.4%	8.4%	2.0%
Total CNRSA	3.7%	12.5%	44.4%	22.9%	5.5%	8.0%	2.8%
Nye County	4.1%	16.6%	41.2%	22.3%	5.7%	6.9%	3.2%
Esmeralda County	6.9%	14.2%	44.3%	18.0%	7.0%	8.0%	1.5%
Nevada	6.4%	12.9%	29.3%	27.0%	6.2%	12.1%	6.1%
U.S.	7.5%	12.1%	28.6%	21.0%	6.3%	15.5%	8.9%

Source: 2000 Census of Population and Housing.

Figure 11. CNRSA Population 25+ by Highest Level of Educational Attainment, 2000.



**Summary:**

- In 2000, the CNRSA reports 16.2 percent of the population ages 25+ has less than a high school education. This is a relatively low percentage when compared to respective county, state and U.S. averages.
- Nearly 45 percent of the CNRSA population has at least a high school education. A slightly lower percentage (39 percent) of the population also reports they have received some college education.

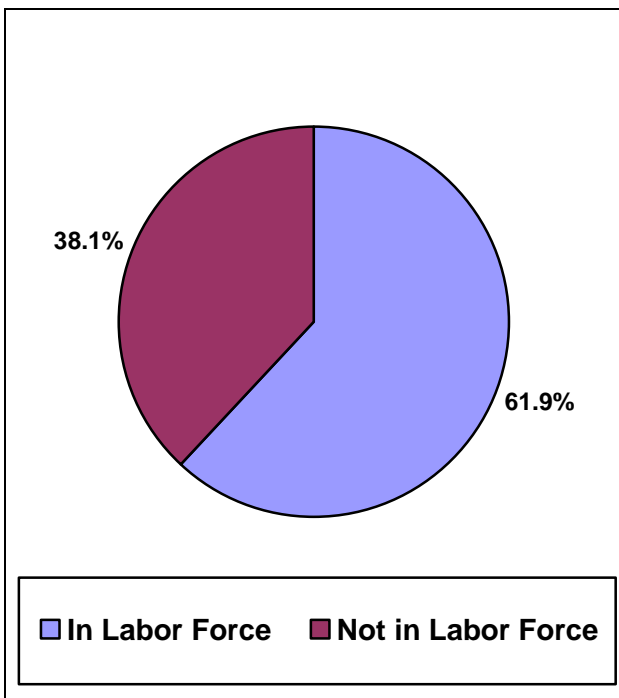
## EMPLOYMENT

Table 11. Percentage of Age 16+ in Labor Force, 2000.

Community (Zip Code)	In Labor Force	Not in Labor Force
Tonopah (89049)	62.0%	38.0%
Round Mountain (89045)	64.7%	35.3%
Silverpeak (89047)	57.9%	42.1%
Goldfield (89013)	54.8%	45.2%
Total CNRSA	61.9%	38.1%
Nye County	51.7%	48.3%
Esmeralda County	56.4%	43.6%
Nevada	65.2%	34.8%
U.S.	59.7%	36.1%

Source: 2000 Census of Population and Housing.

Figure 12. CNRSA Percentage of Age 16+ in Labor Force, 2000.



**Summary:**

In 2000, nearly 62 percent of the CNRSA population 16+ was considered part of the labor force. This trend is relatively high when compared to the respective county, but similar to the state and U.S. averages.

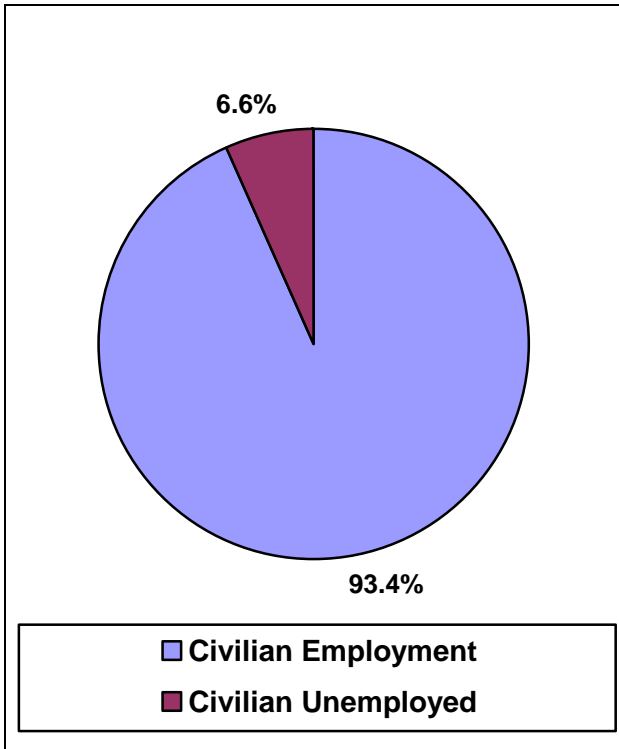


Table 12. Percentage of Labor Force Age 16+ Employment Status, 2007.

Community (Zip Code)	Civilian Employment	Civilian Unemployed
Tonopah (89049)	92.1%	7.9%
Round Mountain (89045)	93.8%	6.2%
Silverpeak (89047)	98.7%	1.3%
Goldfield (89013)	98.7%	1.3%
Total CNRSA	93.4%	6.6%
Nye County	92.7%	7.3%
Esmeralda County	98.6%	1.4%
Nevada	93.3%	6.7%
U.S.	93.4%	6.6%

Source: 2000 Census of Population and Housing. ERSI Forecast for 2007.

Figure 13. Percentage of Labor Force 16+ in CNRSA Employment Status, 2007.



**Summary:**

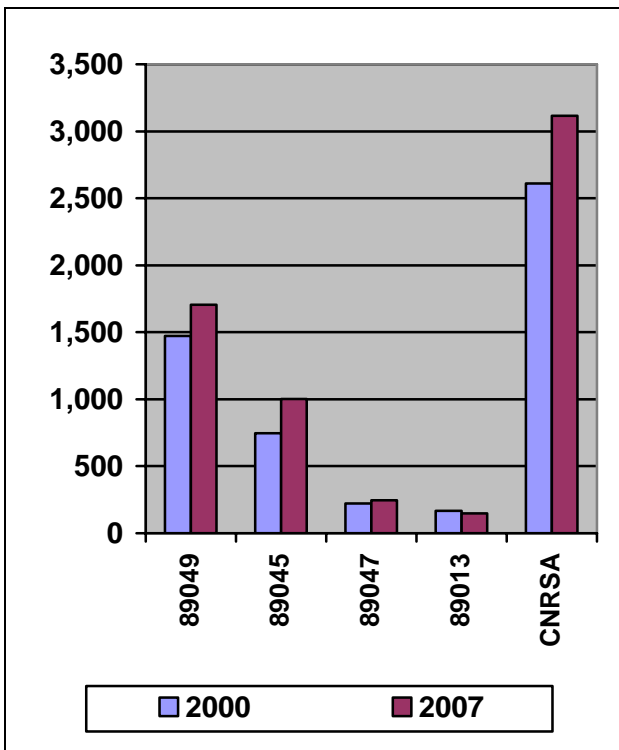
- ✚ In 2007, the CNRSA employment and unemployment percentages were similar to state and U.S. averages.
- ✚ The Unemployment rate is considerably lower in Silverpeak (89047) and Goldfield (89013) at 1.3 percent. This is the result of few employment opportunities and being unable to retain population.

Table 13. Total Employment Trends by Community, CNRSA, County, State and U.S., 2000 and 2007.

Community (Zip Code)	2000	2007	Percent Change	Number Change
Tonopah (89049)	1,473	1707	+15.89%	+234
Round Mountain (89045)	747	1003	+34.27%	+256
Silverpeak (89047)	221	246	+11.31%	+25
Goldfield (89013)	168	159	-5.36%	-9
Total CNRSA	2,609	3,115	+19.39%	+506
Nye County	12,080	15,245	+26.20%	+3,165
Esmeralda County	429	422	-1.63%	-7
Nevada	923,155	1,188,177	+28.71%	+265,022
U.S.	128,279,228	141,590,232	+10.38%	+13,311,004

Source: County Business Patterns. ERSI Forecast for 2004.

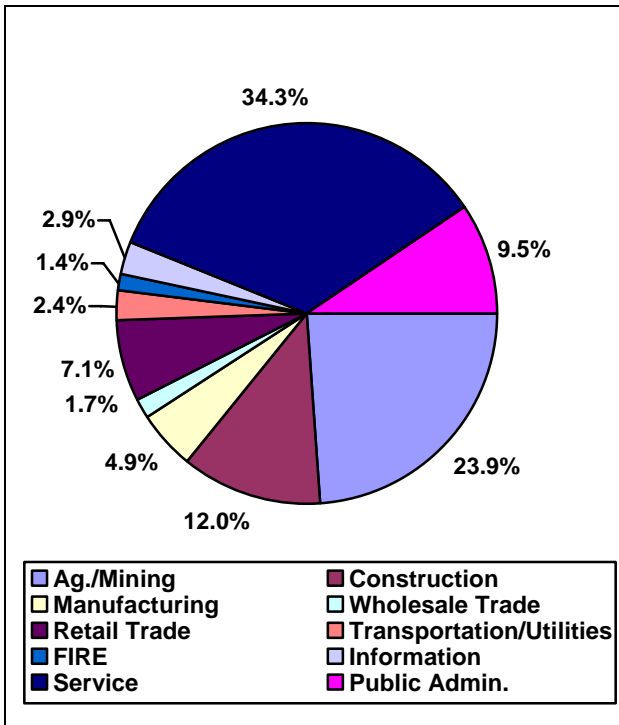
Figure 14. Total Employment Trends by Community and CNRSA, 2000 and 2007.



**Summary:**

- ✚ Between 2000 and 2007, it was estimated that the CNRSA total employment increased 19.39 percent or 506 jobs.
- ✚ With the exception of Goldfield (89013), each community in the region experienced positive job growth between +11.31% in Silverpeak (89047) and +34.27 percent in Round Mountain (89045).
- ✚ Nearly 55% of the CNRSA employment is located in Tonopah (89049).

Figure 15. Percent of CNRSA Employment by Economic Sector, 2007.



**Summary:**

- ✚ Nearly two-thirds of the total employment in the CNRSA is concentrated in the agriculture, mining, service and public administration sectors.
- ✚ Retail Trade and Construction sectors represent 12.0% and 7.1%, respectively, of the total CNRSA employment.

Table 14. Percent of Employment Population 16+ by Industry, 2007.

	Ag. Mining	Const- ruction	Manuf- actoring	Wholesale Trade	Retail Trade	Transport/ Utilities	Infor- mation	Finance Insurance Real Estate	Service	Public Admin.
<b>PERCENT</b>										
Tonopah (89049)	14.1%	14.6%	5.7%	0.7%	7.6%	2.5%	0.4%	5.1%	41.4%	8.0%
Round Mountain (89045)	43.0%	5.6%	4.5%	3.8%	5.1%	0.9%	2.6%	0.0%	25.2%	9.3%
Silverpeak (89047)	27.0%	21.0%	2.6%	1.7%	6.4%	6.0%	1.3%	0.0%	23.6%	10.3%
Goldfield (89013)	3.9%	10.5%	2.6%	0.0%	14.5%	5.9%	3.9%	2.0%	32.2%	24.3%
Total CNRSA	23.9%	12.0%	4.9%	1.7%	7.1%	2.4%	1.4%	2.9%	34.3%	9.5%
Nye County	7.4%	15.9%	3.6%	1.3%	9.4%	4.3%	2.0%	6.4%	41.8%	7.8%
Esmeralda County	16.8%	16.4%	2.6%	0.9%	10.0%	5.9%	2.4%	0.9%	27.3%	16.8%
Nevada	1.0%	11.6%	4.2%	2.8%	10.5%	4.2%	1.8%	7.3%	52.3%	4.3%
U.S.	1.7%	8.0%	10.7%	3.4%	11.6%	4.9%	2.3%	7.4%	45.1%	4.8%
<b>TOTAL EMPLOYMENT</b>	<b>Total</b>									
Tonopah (89049)	1,707									
Round Mountain (89045)	1,003									
Silverpeak (89047)	246									
Goldfield (89013)	159									
Total CNRSA	3,115									

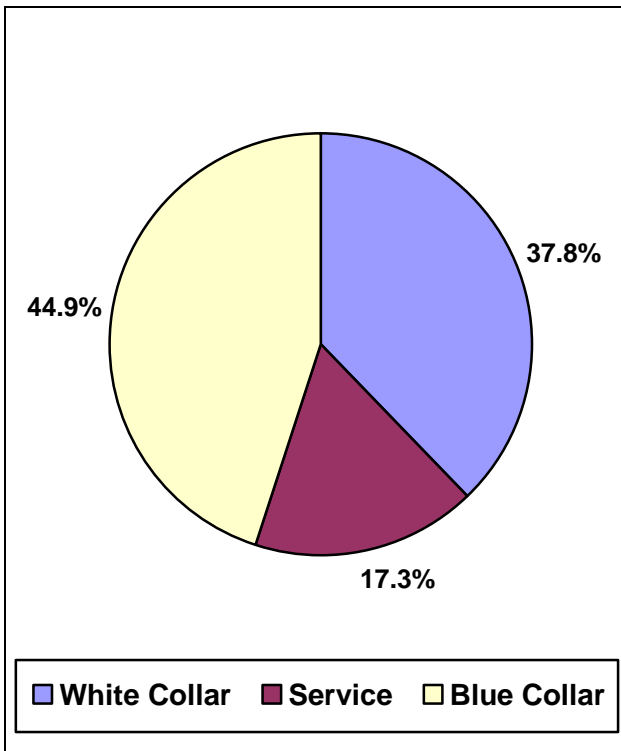
Source: County Business Patterns. ERSI Forecast for 2007.

Table 15. Percent Employment by Occupation, 2007.

Community (Zip Code)	White Collar	Service	Blue Collar
Tonopah (89049)	35.8%	21.9%	42.4%
Round Mountain (89045)	40.5%	9.0%	50.5%
Silverpeak (89047)	28.8%	18.0%	53.2%
Goldfield (89013)	55.9%	19.7%	24.3%
Total CNRSA	37.8%	17.3%	44.9%
Nye County	45.1%	21.0%	33.9%
Esmeralda County	40.3%	19.0%	40.8%
Nevada	52.6%	24.4%	23.0%
U.S.	60.2%	16.5%	23.3%

Source: ERSI Forecast for 2007.

Figure 16. CNRSA Employment by Occupation, 2007.



**Summary:**

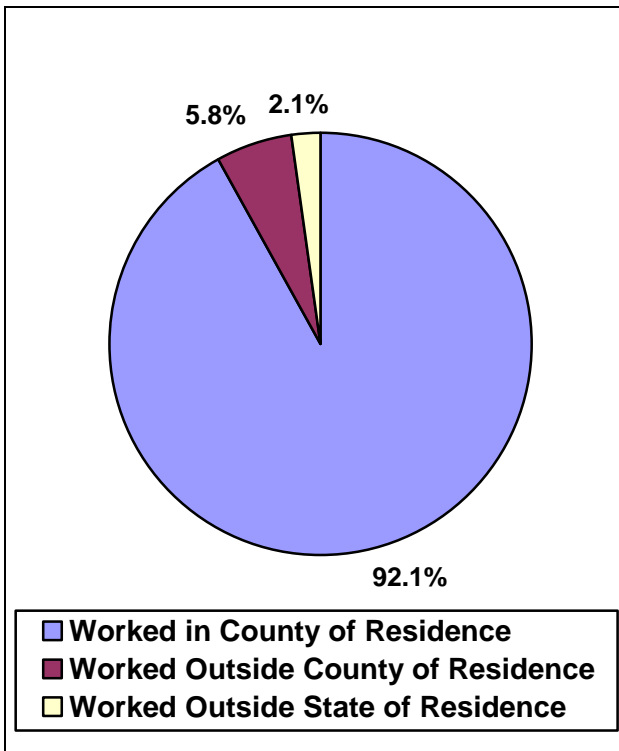
- ✚ White collar employees refer to employees who hold professional, managerial or administrative positions
- ✚ Blue collar employees refer to employees who perform manual labor.
- ✚ White collar employment represents between 25-55 percent of the total employment in each community.
- ✚ Service employment represents the smallest percentage of employment for each community.
- ✚ Blue collar employment represents nearly 50 percent of employment, except in Goldfield (89013).

Table 16. Employment Migration Estimates, 2007.

Community (Zip Code)	Worked in County of Residence	Worked Outside County of Residence	Worked Outside State of Residence
Tonopah (89049)	1,407	60	6
Round Mountain (89045)	719	1	27
Silverpeak (89047)	169	34	18
Goldfield (89013)	107	56	5
Total CNRSA	2,402	151	56
Nye County	9,166	2,613	301
Esmeralda County	302	103	24
Nevada	874,782	33,377	14,996
U.S.	94,042,863	29,600,841	4,635,524

Source: ERSI Forecast for 2007.

Figure 17. CNRSA Employment Migration Estimates, 2007.



**Summary:**

- ✚ Over 92 percent of the total employees work in the county they live, while 5.85 percent work outside the county and 2.1 percent outside the state.
- ✚ Commuting pattern data was not available at the zip code level. Estimates show that Nye County imports nearly 2,900 workers and Esmeralda imports approximately 125 workers.
- ✚ Nearly 87 percent of imported Nye County workers are from Clark County.
- ✚ Approximately 60 percent of imported Esmeralda County workers are from Nye County.

## INCOME

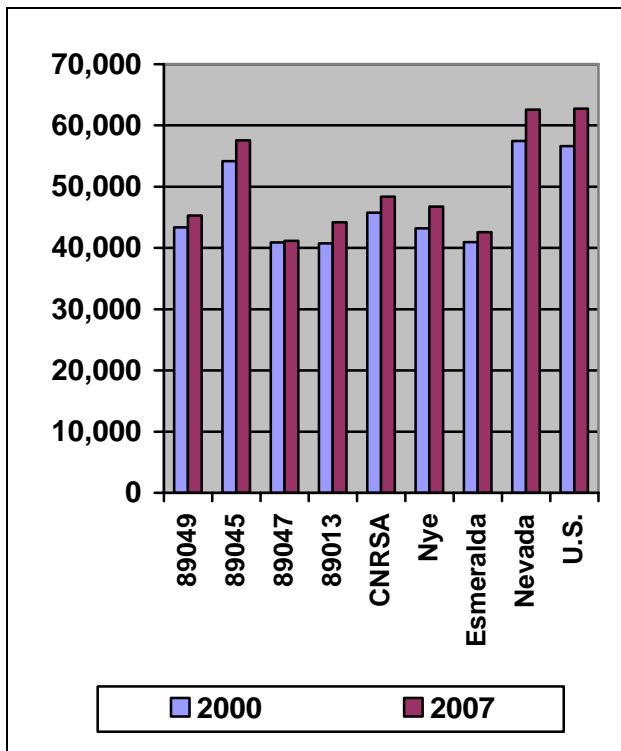
Table 17. Average Household Income, 2000 and 2007.

Community (Zip Code)	2000	2007*	Percent Change	Number Change
Tonopah (89049)	\$43,369	\$45,296	+4.44%	+\$1,927
Round Mountain (89045)	\$54,175	\$57,564	+6.26%	+\$3,389
Silverpeak (89047)	\$40,891	\$41,178	+0.70%	+\$287
Goldfield (89013)	\$40,766	\$44,180	+8.37%	+\$3,414
Total CNRSA	\$45,782	\$48,377	+5.67%	+\$2,595
Nye County	\$43,196	\$46,763	+8.26%	+\$3,567
Esmeralda County	\$40,962	\$42,563	+3.91%	+\$1,601
Nevada	\$57,469	\$62,564	+8.87%	+\$5,095
U.S.	\$56,644	\$62,737	+10.76%	+\$6,093

Source: 2000 Census of Population and Housing. ERSI Forecast for 2007.

\* Adjusted for inflation (2000=100). 2007 estimated using 2006 deflator.

Figure 18. Average Household Income, 2000 and 2007.



### Summary:

- + Between 2000 and 2007, average household income has increased nearly 5.67 percent in the CNRSA. This trend was also consistent with the majority of communities in the region, except Silverpeak (89047) that experienced flat growth.
- + Community and the CNRSA average household income is significantly less than state and U.S. averages.
- + Round Mountain reports the highest average household income and greatest growth rate.

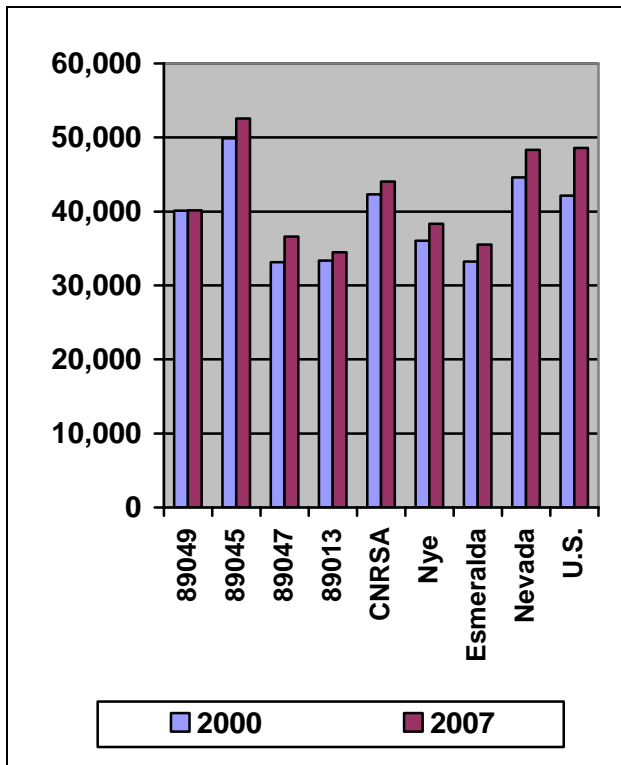
Table 18. Median Household Income, 2000 and 2007.

Community (Zip Code)	2000	2007*	Percent Change	Number Change
Tonopah (89049)	\$40,130	\$40,155	+0.06%	+\$25
Round Mountain (89045)	\$49,893	\$52,572	+5.37%	+\$2,679
Silverpeak (89047)	\$33,151	\$36,621	+10.47%	+\$3,470
Goldfield (89013)	\$33,370	\$34,493	+3.37%	+\$1,123
Total CNRSA	\$42,318	\$44,053	+4.10%	+\$1,735
Nye County	\$36,034	\$38,351	+6.43%	+\$2,317
Esmeralda County	\$33,230	\$35,551	+6.98%	+\$2,321
Nevada	\$44,614	\$48,309	+8.28%	+\$3,695
U.S.	\$42,164	\$45,603	+8.16%	+\$3,439

Source: 2000 Census of Population and Housing. ERSI Forecast for 2004.

\* Adjusted for inflation (2000=100). 2007 estimated using 2006 deflator.

Figure 19. Median Household Income, 2000 and 2007.



**Summary:**

- + Median household income is the midpoint range of all reported household incomes.
- + Overall, the CNRSA median household income has increased 4.10 percent. This percentage growth rate is consistent across most communities with the exception of Tonopah where median household income is flat.
- + Median household income trends follow similar per capita and average household trends, lagging behind respective state and U.S. averages.



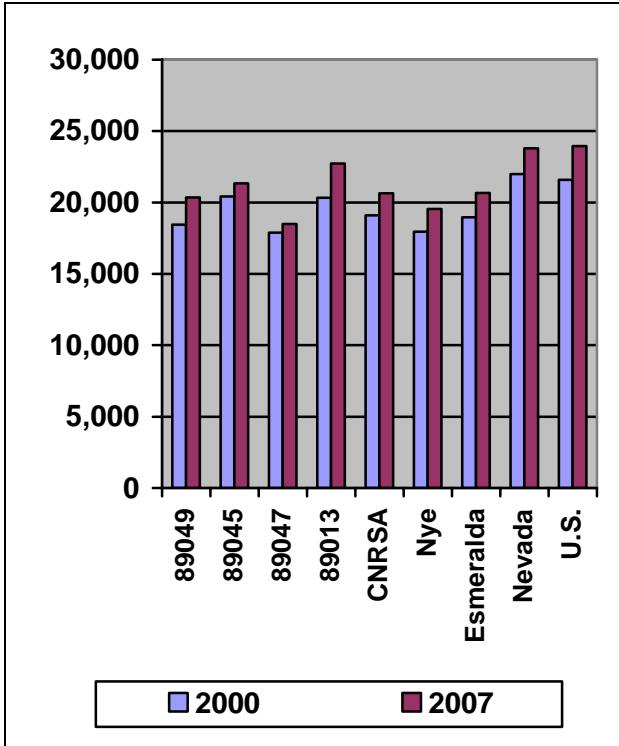
Table 19. Per Capita Income, 2000 and 2007.

Community (Zip Code)	2000	2007*	Percent Change	Number Change
Tonopah (89049)	\$18,449	\$20,359	+10.34%	+\$1,910
Round Mountain (89045)	\$20,427	\$21,326	+4.40%	+\$899
Silverpeak (89047)	\$17,891	\$18,496	+3.38%	+\$605
Goldfield (89013)	\$20,334	\$22,714	+11.7%	+\$2,380
Total CNRSA	\$19,093	\$20,642	+8.11%	+\$1,549
Nye County	\$17,962	\$19,553	+8.86%	+\$1,591
Esmeralda County	\$18,971	\$20,659	+8.90%	+\$1,688
Nevada	\$21,989	\$23,809	+8.28%	+\$1,820
U.S.	\$21,587	\$23,950	+10.95%	+\$2,363

Source: 2000 Census of Population and Housing. ERSI Forecast for 2007.

\* Adjusted for inflation (2000=100). 2007 estimated using 2006 deflator

Figure 20. Per Capita Income, 2000 and 2007.



**Summary:**

- ✚ Between 2000 and 2007, per capita income in the CNRSA grew approximately 8.11 percent in the region.
- ✚ Although per capita income had experienced growth between 2000 and 2007, every community in the CNRSA still lags behind their respective state and U.S. averages.
- ✚ In 2007, Goldfield (89013) reported the greatest per capita income of \$22,714, followed by Round Mountain (89045) at \$21,326 and Tonopah (89049) at \$20,359.

Table 20. Percent of Households by Income, 2000.

	Less than \$15,000	\$15,000 to \$24,999	\$25,000 to \$34,999	\$35,000 to \$49,999	\$50,000 to \$74,999	\$75,000 to \$99,999	\$100,000 to \$149,999	\$150,000 to \$199,999	\$200,000+	Total
<b>PERCENT</b>										
Tonopah (89049)	21.4%	8.9%	14.3%	18.4%	19.4%	14.8%	2.2%	0.0%	0.6%	100.0%
Round Mountain (89045)	10.6%	5.9%	10.5%	23.1%	25.0%	21.4%	2.3%	0.0%	1.1%	100.0%
Silverpeak (89047)	24.3%	11.3%	16.5%	15.2%	21.7%	6.1%	3.9%	0.0%	0.9%	100.0%
Goldfield (89013)	22.7%	11.9%	18.2%	13.6%	18.8%	8.5%	6.3%	0.0%	0.0%	100.0%
Total CNRSA	18.9%	8.6%	13.8%	19.0%	21.0%	15.3%	2.7%	0.0%	0.7%	100.0%
Nye County	18.8%	14.6%	14.9%	20.0%	17.0%	9.1%	4.4%	0.5%	0.6%	100.0%
Esmeralda County	23.4%	11.7%	17.4%	14.3%	20.3%	7.3%	5.1%	0.0%	0.4%	100.0%
Nevada	12.4%	12.3%	13.1%	18.1%	21.7%	11.1%	7.4%	1.8%	2.1%	100.0%
U.S.	15.8%	12.8%	12.8%	16.5%	19.5%	10.2%	7.7%	2.2%	2.4%	100.0%

Source: 2000 Census of Population and Housing.

Table 21. Percent of Households by Income, 2007.

	Less than \$15,000	\$15,000 to \$24,999	\$25,000 to \$34,999	\$35,000 to \$49,999	\$50,000 to \$74,999	\$75,000 to \$99,999	\$100,000 to \$149,999	\$150,000 to \$199,999	\$200,000+	Total
<b>PERCENT</b>										
Tonopah (89049)	19.2%	8.8%	10.1%	14.8%	22.4%	13.3%	10.0%	0.8%	0.5%	100.0%
Round Mountain (89045)	8.7%	4.9%	6.0%	14.3%	32.1%	16.5%	16.3%	0.0%	1.2%	100.0%
Silverpeak (89047)	21.8%	6.2%	15.2%	15.6%	22.6%	11.1%	6.6%	0.0%	0.8%	100.0%
Goldfield (89013)	18.4%	10.6%	11.7%	15.1%	16.2%	16.8%	11.2%	0.0%	0.0%	100.0%
Total CNRSA	16.4%	7.6%	9.5%	14.7%	24.8%	14.2%	11.6%	0.5%	0.7%	100.0%
Nye County	14.9%	11.4%	11.9%	17.9%	20.0%	11.9%	8.7%	2.2%	1.0%	100.0%
Esmeralda County	20.4%	8.3%	13.4%	15.3%	19.5%	14.0%	8.7%	0.0%	0.4%	100.0%
Nevada	9.3%	8.7%	9.9%	15.5%	21.5%	14.8%	12.5%	4.1%	3.6%	100.0%
U.S.	12.0%	9.9%	10.3%	14.7%	19.5%	12.8%	12.3%	4.2%	4.2%	100.0%

Source: 2000 Census of Population and Housing. ERSI Forecast for 2007.

## **HOUSEHOLD SURVEY RESULTS**

Household expenditure patterns in a community can help define the economic characteristics that develop and support overall economic activity. The better a community or region understands these characteristics and their linkages between businesses and households the better they will be able to plan and respond to change. The purpose of this section is to summarize the results from a household survey conducted in the CNRSA.

Working with local community leaders and the Nye County Cooperative Extension Office, two household surveys were conducted in the CNRSA. One survey was designed for TTR employees and one survey for general households. These surveys were very similar in that they asked specific questions about household social demographics and household expenditure patterns (see Appendix - Surveys). The main purpose for sending two different surveys was to distinguish between household characteristics and expenditure patterns for TTR households and non TTR households. TTR households are defined as households that have at least one member working at TTR and receiving income that contributes to the overall household income. Non-TTR households are households that do not have any members of their household working at TTR.

A total of 2,615 surveys were mailed to all post office boxes in Tonopah (89049), Goldfield (89013), Silverpeak (89047), Round Mountain (89045) and Manhattan (89022). A total of 284 surveys were returned for a return rate of 10.86 percent. TTR employee surveys were distributed to employees at their place of work and had 33 completed and returned. In total, TTR households and non TTR households, 317 questionnaires were returned for the entire CNRSA.

Tables 22 to 27 summarize and compare responses between TTR households and non TTR households.

Table 22. Residence of Survey Respondents.

<b>Residence of Survey Respondent</b>	<b>TTR Number</b>	<b>Percent TTR Employee</b>	<b>Non-TTR Number</b>	<b>Percent Non-TTR</b>	<b>Total Number</b>	<b>Total Percent</b>
Goldfield	1	3.0%	30	10.5%	31	9.7%
Manhattan	1	3.0%	4	1.4%	5	1.6%
Round Mtn.	0	0.0%	81	28.5%	81	25.6%
Silverpeak	0	0.0%	9	3.1%	9	2.8%
Tonopah	30	91.0%	156	55.1%	186	58.7%
Other	1	3.0%	4	1.4%	5	1.6%
<b>Total</b>	<b>33</b>	<b>100.0%</b>	<b>284</b>	<b>100.0%</b>	<b>317</b>	<b>100.0%</b>

Key Point: Following population distribution trends, nearly 60 percent of returned surveys were from Tonopah which has over 55 percent of the CNRSA total population.

Table 23. Commuting Patterns by Survey Respondents.

<b>Residence</b>	<b>Workplace</b>						<b>Total</b>	<b>% who work in zip they live in</b>
	Goldfield	Manhattan	Round Mountain	Silverpeak	Tonopah	Other		
Goldfield	13	0	0	1	4	1	19	68%
Manhattan	0	2	0	0	0	0	2	100%
Round Mtn.	0	0	55	0	2	1	58	95%
Silverpeak	0	0	0	6	0	0	6	100%
Tonopah	1	0	2	0	138	5	146	95%
<b>Total</b>	<b>14</b>	<b>2</b>	<b>57</b>	<b>7</b>	<b>144</b>	<b>7</b>	<b>231</b>	

Note: Results do not add to total sample 317 because of incomplete place of resident zip code or workplace zip code. Participants may have elected to not complete this information to protect anonymity. However, in situations like this survey, respondents did complete the rest of the survey.

Table 24. Key Characteristics Comparison of TTR and Non-TTR Household Respondents.

	<b>TTR</b>	<b>Non-TTR</b>	<b>Total</b>
Avg. Years in CNRSA.	5.4	4.5	4.8
Avg. Months Per year residing in Nye Co.	12.0	11.9	11.9
Avg. Household size	2.7	2.4	2.5
Avg. Respondent Age	48.1	53.5	52.0
Avg. Household Income*	\$64,200	\$ 48,300	\$ 52,800

\*Average found using category midpoints

Key Point: TTR households appear to have lived in the CNRSA longer, have a larger household, younger household and larger average household income then non-TTR households.

Table 25. Education of respondent for TTR Household and Non-TTR Household.

	<b>TTR</b>	<b>Non-TTR</b>	<b>Total</b>
Some high school	3.4%	3.1%	3.2%
High school diploma	38.6%	29.3%	31.9%
Some college	35.2%	34.7%	34.8%
Associate degree	13.6%	10.2%	11.2%
Bachelor's degree	6.8%	11.1%	9.9%
Graduate degree	2.3%	11.6%	8.9%
	100.0%	100.0%	100.0%

Key Point: TTR Households and non-TTR households have similar educational levels.

Table 26. Respondent businesses connected to TTR.

	<b>TTR</b>	<b>Non-TTR</b>	<b>Total</b>
Your company or a family company <i>does not</i> do business with TTR	72.9%	90.7%	85.6%
Your company or a family member's company <i>does business</i> with TTR	27.1%	9.3%	14.4%
	100.0%	100.0%	100.0%

Table 27. Estimated Monthly Household Expenditure Patterns for TTR Households and Non-TTR Households.

Expenditure Category	TTR Household	Non-TTR Household	CNRSA Average Household
Housing			
Rent	\$71	\$133	\$114
Mortgage	\$562	\$266	\$359
Property Tax	\$230	\$162	\$180
Grocery	\$493	\$481	\$484
Food Away from Home	\$179	\$132	\$146
Utilities (Electric, Natural Gas, Propane, Water, Cable/Satellite, Phone)	\$576	\$460	\$492
General Merchandise	\$251	\$146	\$178
Medical (Doctor, Dentist, Optometrist, Hospital, Prescription, )	\$404	\$283	\$315
Insurance (Vehicle, Health, Life)	\$388	\$351	\$362
Recreation (Gaming, Indoor, Outdoor)	\$99	\$88	\$91
Vehicle Expenses (oil & maintenance, gas)	\$323	\$312	\$315
Services (Account, Lawyer, child care, misc...)	\$159	\$111	\$127
Credit Card (Principal + Interest)	\$439	\$340	\$372
Miscellaneous	\$796	\$385	\$156
Savings & Retirement	\$140	\$170	\$163
<i>Total Monthly Expenses (except housing)</i>	<i>\$4,547</i>	<i>\$3,421</i>	<i>\$3,740</i>
Total Monthly Income	\$5,350	\$4,025	\$4,400
Allocation for Housing & Misc. Taxes	\$803	\$604	\$660

Key Point: TTR households have greater monthly expenditures in nearly every category when compared to non-TTR households. This is consistent with the average monthly household income.

## **TTR ECONOMIC IMPACT ESTIMATES**

Economic impacts for current and proposed operational changes at TTR were estimated using a sub-county (CNRSA) IMPLAN economic impact model. Given the sensitive nature of gaining access to TTR operational expenditure and economic data (i.e. expenditures, payroll and employment), researchers were forced to accept data published from various TTR public meetings and information provided by Nevada representatives. However, some adjustments were made to the overall model based on the primary data collected from TTR and non-TTR households. If additional data is made available by TTR operations, the economic model can be updated to best reflect TTR operations and expenses.

Economic impacts are defined as total expenditures, personal income and employment. Total impacts are estimated using the following components:

***Direct Impacts*** – Represents the impacts for the expenditures and/or production values specified as direct, final demand changes.

***Indirect/Induced Effects*** – Represents the impacts caused by the iteration of industries and households purchasing from industries and local businesses resulting from direct, final demand changes.

***Total Impact*** – The total impact is the sum of the direct, indirect and induced effects.

The following section presents estimated economic impacts in the CNRSA from TTR current operations. This includes total estimated impacts for \$1,000,000 of direct operational expenditures and estimated net impacts under various operational reduction scenarios.

### **Economic Impacts per \$1,000,000 TTR Operational Expenditures**

Table 28 shows the economic impact associated with \$1,000,000 of TTR direct operational expenditures. It is estimated that each \$1,000,000 of TTR direct operating expenditures generates and additional \$124,598 for a total expenditure impact of \$1,124,598, including \$116,969 in personal income and supporting 2.2 jobs.



Table 28. Estimated Economic Impacts from \$1,000,000 in TTR Operational Expenditures.

	<b>Direct</b>	<b>Indirect/Induced</b>	<b>Total</b>
Expenditures	\$1,000,000	\$124,598	\$1,124,598
Personal Income	\$79,394	\$37,575	\$116,969
Employment	1.0	1.2	2.2
Income/Job	\$79,394	\$31,312	\$53.167
Output Multiplier			1.12
Income Multiplier			1.47
Employment Multiplier			2.20

Table 29 presents the top 10 sectors that are impacted through secondary impacts (indirect and induced) generated from \$1,000,000 in direct TTR operational expenditures. These sectors represent \$124,598 in secondary impact or 68.7 percent of the total estimated secondary impacts generated in the CNRSA. Reduction in TTR operational expenditures will be greatly felt by professional services, eating/drinking/lodging and finance/insurance/real estate sectors.

Table 29. Top 10 linked sectors through secondary impacts (indirect & induced) generated from \$1,000,000 in operational expenditures.

	<b>Total Dollar Indirect &amp; Induced</b>	<b>Percent of Total Indirect &amp; Induced</b>
Professional Services	\$15,760	12.65%
Eating/Drinking/Lodging	\$14,127	11.34%
Finance/Insurance/Real Estate (FIRE)	\$13,294	10.67%
Construction	\$11,690	9.38%
Manufacturing	\$11,416	9.16%
Retail Trade	\$8,370	6.72%
Wholesale Trade	\$4,086	3.28%
Health Care & Social Assistance	\$4,058	3.26%
Transportation	\$1,482	1.19%
Arts/Entertainment/Recreation	\$1,345	1.08%
<b>Sub-Total</b>	<b>\$85,628</b>	<b>68.72%</b>
Total Indirect & Induced	\$124,598	

## Impact Scenarios

Four TTR impact scenarios are considered in this analysis and are described in Table 30. Each scenario begins with the baseline, 100 percent of current operations, and then adjusted down by the percentage of proposed reduction. Under each scenario, except 100 percent reduction, TTR will still be operating but at reduced direct operational expense levels. Although these scenarios are not Environmental Impact Scenario (EIS) Alternative specific, they do provide some baseline information that can be used to better understand the possible economic implications on the CNRSA from varying proposed operational changes.

Table 30. TTR Impact Scenarios.

Baseline	100% Direct Operational Expenditures – Current Levels
Scenario One	100% Reduction in TTR Direct Operational Expenditures
Scenario Two	75% Reduction in TTR Direct Operational Expenditures
Scenario Three	50% Reduction in TTR Direct Operational Expenditures
Scenario Four	25% Reduction in TTR Direct Operational Expenditures

Table 31 summarizes the total economic impacts for TTR operations on the CNRSA under the four scenarios. The economic impact for current TTR operations is estimated at \$157.4 million, including \$16.3 million of personal income and supporting nearly 305 jobs. This baseline is then compared to the 100 percent, 75 percent, 50 percent, and 25 percent reduction scenario. The net economic impact is the difference between the baseline estimated impact and the percent reduction estimated impact. Under each scenario it is clear that any reduction in TTR current operations from the current baseline level will result in an overall economic loss to the CNRSA. If TTR is closed, the overall effect on the CNRSA total personal income and total employment would result in a reduction by 10.99 percent and 9.787 percent respectively. This is a significant portion of any economy that could present several other social, economic and fiscal problems that are outside the scope of this analysis and could further be examined in another study.

Table 31. Summary Estimated Impacts from TTR Operations on the CNRSA. Four Operational Scenarios – 100 percent reduction/No Change, 75 percent reduction, 50 percent reduction, 25 percent reduction.

	<b>100% No Change/ Reduction</b>	<b>75% Reduction</b>	<b>50% Reduction</b>	<b>25% Reduction</b>
<i><b>Current Economic Impact</b></i>				
Economic Impact	\$157,443,741			
Personal Income	\$16,375,655			
Employment	304.5			
<i><b>Economic Loss to CNRSA</b></i>				
Economic Impact	<b>-\$157,443,741</b>	<b>-\$118,082,805</b>	<b>-\$78,721,870</b>	<b>-\$39,360,935</b>
Personal Income	<b>-\$16,375,655</b>	<b>-\$12,281,741</b>	<b>-\$8,187,827</b>	<b>-\$4,093,913</b>
Employment	<b>-304.5</b>	<b>-228.38</b>	<b>-152.25</b>	<b>-76.13</b>
<i><b>Net Economic Impact</b></i>				
Economic Impact	\$0	\$39,360,936	\$78,721,870	\$118,082,805
Personal Income	\$0	\$4,093,914	\$8,187,827	\$12,281,741
Employment	0	76.12	152.25	228.38
<i><b>% Reduction in CNRSA</b></i>				
Personal Income	<b>-10.99%</b>	<b>-8.24%</b>	<b>-5.49%</b>	<b>-2.75%</b>
Employment	<b>-9.78%</b>	<b>-7.33%</b>	<b>-4.89%</b>	<b>-2.44%</b>

Tables 32 to 35 summarize in greater detail the economic impacts for TTR operations on the CNRSA. Four impact scenarios include: (1) 100 percent reduction in TTR operational expenditures, (2) impacts from a 75 percent reduction in TTR operational expenditures, (3) impacts from a 50 percent reduction in TTR operational expenditures and (4) impacts from a 25 percent reduction in TTR operational expenditures.

Table 32. Estimated Economic Impact on CNRSA from a 100 percent Reduction in TTR Annual Operating Expenditures.

	<b>Direct</b>	<b>Indirect/Induced</b>	<b>Total</b>
Expenditures	<b>-\$140,000,000</b>	<b>-\$17,443,733</b>	<b>-\$157,443,741</b>
Personal Income	<b>-\$11,115,200</b>	<b>-\$5,260,455</b>	<b>-\$16,375,655</b>
Employment	<b>-135.0</b>	<b>-169.5</b>	<b>-304.5</b>
Income/Job	\$79,572	\$28,442	\$60,444
Output Multiplier			1.12
Income Multiplier			1.47
Employment Multiplier			2.20

Table 33. Estimated Economic Impact on CNRSA from a 75 percent Reduction in TTR Annual Operating Expenditures.

	<b>Direct</b>	<b>Indirect/Induced</b>	<b>Total</b>
<b><i>100% Operational Expend.</i></b>			
Expenditures	\$140,000,000	\$17,443,733	\$157,443,741
Personal Income	\$11,115,200	\$5,260,455	\$16,375,655
Employment	135.0	169.5	304.5
<b><i>25% Operational Expend.</i></b>			
Expenditures	\$35,000,000	\$4,360,933	\$39,360,933
Personal Income	\$7,943,273	\$1,315,113	\$9,258,386
Employment	33.75	42.38	76.13
<b><i>Loss to CNRSA</i></b>			
Expenditures	<b>-\$105,000,000</b>	<b>-\$13,082,800</b>	<b>-\$118,082,808</b>
Personal Income	<b>-\$3,171,927</b>	<b>-\$3,945,342</b>	<b>-\$7,117,269</b>
Employment	<b>-101.25</b>	<b>-127.12</b>	<b>-228.37</b>

Table 34. Estimated Economic Impact on CNRSA from a 50 percent Reduction in TTR Annual Operating Expenditures.

	<b>Direct</b>	<b>Indirect/Induced</b>	<b>Total</b>
<b><i>100% Operational Expend.</i></b>			
Expenditures	\$140,000,000	\$17,443,733	\$157,443,741
Personal Income	\$11,115,200	\$5,260,455	\$16,375,655
Employment	135.0	169.5	304.5
<b><i>50% Operational Expend.</i></b>			
Expenditures	\$70,000,000	\$8,721,866	\$78,721,870
Personal Income	\$5,557,600	\$2,630,227	\$8,187,827
Employment	67.50	84.75	152.25
<b><i>Loss to CNRSA</i></b>			
Expenditures	<b>-\$70,000,000</b>	<b>-\$8,721,866</b>	<b>-\$78,721,870</b>
Personal Income	<b>-\$5,557,600</b>	<b>-\$2,630,227</b>	<b>-\$8,187,827</b>
Employment	<b>-67.50</b>	<b>-84.75</b>	<b>-152.25</b>

Table 35. Estimated Economic Impact on CNRSA from a 25 percent Reduction in TTR Annual Operating Expenditures.

	<b>Direct</b>	<b>Indirect/Induced</b>	<b>Total</b>
<b><i>100% Operational Expend.</i></b>			
Expenditures	\$140,000,000	\$17,443,733	\$157,443,741
Personal Income	\$11,115,200	\$5,260,455	\$16,375,655
Employment	135.0	169.5	304.5
<b><i>75% Operational Expend.</i></b>			
Expenditures	\$105,000,000	\$13,082,800	\$118,082,808
Personal Income	\$3,171,927	\$3,945,342	\$7,117,269
Employment	101.25	127.12	228.37
<b><i>Loss to CNRSA</i></b>			
Expenditures	<b>-\$35,000,000</b>	<b>-\$4,360,933</b>	<b>-\$39,360,933</b>
Personal Income	<b>-\$7,943,273</b>	<b>-\$1,315,113</b>	<b>-\$9,258,386</b>
Employment	<b>-33.75</b>	<b>-42.38</b>	<b>-76.13</b>

## CONCLUSIONS & DISCUSSION

Tonopah Test Range (TTR) is situated in Central Nevada surrounded by several small rural communities that spread over two counties: Nye and Esmeralda. These communities include Tonopah, Round Mountain, Manhattan, Goldfield and Silverpeak (CNRSA). TTR operations have stabilized the economy of the CNRSA given the boom-bust nature of the regions other two basic industries of mining and tourism. Demographic trends in the CNRSA have been relatively stable with very modest population growth, especially in Tonopah and Round Mountain. It might be safe to conclude that these demographic trends will continue unless the regions economic structure is changed. Basic industries such as TTR, mining, agriculture and tourism are very important for the economic and social stability and survival of the CNRSA.

The following study examined the economic implications on the CNRSA associated with proposed operational changes at the TTR. First, it was determined that TTR contributes directly to the CNRSA economy approximately \$140 million annually for normal operations. This initial investment generates a total economic impact of \$157.4 million in economic activity, including \$16.3 million in personal income and supporting nearly 304.5 jobs in the CNRSA. These levels represent approximately 10.99 percent of CNRSA total personal income and 9.78 percent of CNRSA total employment. Industries that are also impacted through secondary effects by TTR activities in the CNRSA include: finance/insurance/real estate, construction, retail trade, manufacturing, professional services, wholesale trade, arts/entertainment/recreation, health care and social assistance, eating/drinking/lodging and transportation. Several businesses in these economic sectors exist because of TTR operations.

Any reduction in TTR operations will have significant economic and social impacts on the CNRSA. For example, a full closure will result, at the least, full reduction in economic activity, personal income and jobs mentioned previously. If there is a 75 percent reduction in TTR operations this could potentially result in a reduction of approximately \$118.0 million in economic activity, including \$12.2 million in personal income and 228 jobs; while a 50 percent reduction in TTR operations will result in a decrease in \$78.7 million in economic activity, including \$8.1 million in personal income and 152 jobs; and finally a 25 percent reduction in

TTR operations would result in a \$39.3 million reduction in economic activity, including \$4.0 million in personal income and 76 jobs. Additionally, under each scenario, the social structure in the CNRSA will be stressed as other basic economic industries will not be able to absorb excess labor and force workers and families to leave the CNRSA because of the lack of jobs. This could put even greater stress on the local economies and have even greater economic and social impacts on the CNRSA.

Finally, this study provides the basic framework to examine the economic and social implications from proposed operational changes at TTR on the CNRSA. A modified economic impact model was developed and used to estimate impacts on the CNRSA. This was the best available tool at the time of the study. It is recommended that additional model development and modification be pursued especially for the TTR sector and its general economic operations (i.e. verification of total operational expenses and allocation of spending, payroll and employment).

## **APPENDIX – HOUSEHOLD SURVEYS**



# Tonopah Test Range Employee Survey

Tonopah Test Range (TTR) has been part of Nye County, Nevada for approximately sixty years. This Department of Defense facility has been an important economic stabilizer for the Town of Tonopah, Northern Nye County and Esmeralda County. During a recent public scoping meeting in Nye County, the National Nuclear Security Administration (NNSA) made a presentation titled “Complex 2030 Supplemental Programmatic Environmental Impact Statement.” This presentation discussed alternative proposals to close and/or relocate current TTR operations by the year 2030. Changes in current TTR operations could potentially impact the social and economic conditions in the region.

University of Nevada Cooperative Extension and University Center for Economic Development is conducting the following survey to better understand the demographic and economic tendencies in Northern Nye and Esmeralda County. This survey will assist with updating key indicators that will provide a more accurate profile of current conditions and provide the foundation to estimate potential impacts from proposed operational changes at the TTR facility.

The following survey is voluntary, anonymous and strictly confidential. All surveys will be pooled to profile average households in the region. Your participation is vital to provide an accurate up-to-date picture of resident living situations, their work and spending patterns in the region.

If you have any questions, please call Amy Meier 775-482-6794 (Tonopah), Buddy Borden 702-222-3130 (Las Vegas), or Tom Harris 775-784-1681 (Reno).

1. Are you a resident of Nye/Esmeralda County, Nevada  Yes  No

Please list your primary resident zip code \_\_\_\_\_

***If you answered yes to question 1 skip to question 2; if you answered no, then answer questions 1a & 1b***

- 1a. If you are **not** a Nye/Esmeralda County resident, on average, how many days per week do you stay in Nye County?

1       3       5       7  
 2       4       6

- 1b. If you are **not** a Nye/Esmeralda County resident, what are your accommodations while working in Nye County?

Daily Motel Rental       Residential Rental  
 Weekly Motel Rental       Company Lodging  
 Monthly Motel Rental       None, daily commute

***Skip to question 4***

2. How many years have you lived in Nye/Esmeralda County ?

1-2 yrs       5-6 yrs       9-10 yrs  
 3-4 yrs       7-8 yrs       10+ yrs

- 3a. How many months per year do you reside in Nye/Esmeralda County?

12       9       6       3  
 11       8       5       2  
 10       7       4       1

- 3b. If you do not live year-round in Nye/Esmeralda County, where do you live the other months?

Write zip code: \_\_\_\_\_

4. How many people are there in your household?

*Please include everyone in this home. This could include family, relatives, friends, acquaintances, or roommates.*

- |                          |         |                          |      |                          |                 |
|--------------------------|---------|--------------------------|------|--------------------------|-----------------|
| <input type="checkbox"/> | Just Me | <input type="checkbox"/> | Four | <input type="checkbox"/> | Seven           |
| <input type="checkbox"/> | Two     | <input type="checkbox"/> | Five | <input type="checkbox"/> | Eight           |
| <input type="checkbox"/> | Three   | <input type="checkbox"/> | Six  | <input type="checkbox"/> | More than Eight |

5. Please answer some questions about each family member in your household.

>>Please answer these questions for family member of all ages

>>If you have more than five members living in this household, please answer about the four oldest members

>>If you are on your own, just answer in the first column

>>To keep from getting mixed up, write down their first name or initials at the top of their column

	Family Member ....				
	You	One	Two	Three	Four
>>Put their name or initials here to help you remember who is who					
<b>Year Born</b> >> Write year or age:					
<b>Education</b> >>Check the highest level					
Currently enrolled in K-12					
Some high school but no diploma					
High School diploma					
Some college no diploma					
Associate Degree					
Bachelor Degree					
Graduate Degree					
<b>Ethnicity</b>					
White/Caucasian					
Hispanic Origin					
African American/Black					
Asian or Pacific Islander					
American Indian					
Other					

	<b>Family Member ....</b>				
	<b>You</b>	<b>One</b>	<b>Two</b>	<b>Three</b>	<b>Four</b>
<i>&gt;&gt;Put their name or initials here to help you remember who is who</i>					
<b>Employment Status</b>					
Full-Time (annual)					
Part-Time (annual)					
Part-Time (seasonal)					
Unemployed, but looking					
Not employed and not looking					
Retired, seeking work					
Retired, not looking					
<b>Employment Industry</b>					
Agriculture					
Mining					
Construction					
Casino/Gaming					
Eating & Drinking (outside casino)					
Health Care					
Service (except gaming & health care)					
Retail Trade					
Wholesale Trade					
Utilities					
Transportation					
Finance/Banking					
Real Estate					
Manufacturing					
Education					
Government					
Other (name): _____					

6. Do you or members of your household own a business?

Yes       No

*If yes, please describe* \_\_\_\_\_

7. Does anyone in your household hold more than one job?

Yes  
If yes, what industry

No  
If no, skip to question 9

	Family Member ....				
	You	One	Two	Three	Four
>>Put their name or initials here to help you remember who is who					
<b>Employment Industry</b>					
Agriculture					
Mining					
Construction					
Casino/Gaming					
Eating & Drinking (outside casino)					
Health Care					
Service (except gaming & health care)					
Retail Trade					
Wholesale Trade					
Utilities					
Transportation					
Finance/Banking					
Real Estate					
Manufacturing					
Education					
Government					
Other (name): _____					

8. Please describe you and family member's primary employment title and occupation (i.e. laborer - construction; manger - office operations).

You \_\_\_\_\_  
 Family Member One \_\_\_\_\_  
 Family Member Two \_\_\_\_\_  
 Family Member Three \_\_\_\_\_  
 Family Member Four \_\_\_\_\_

9. Outside your primary employment, please describe any other trade skills that you and family members have but may or may not offer for a fee (i.e. mechanic, construction, plumber, painter, computers, etc...)

You \_\_\_\_\_  
Family Member One \_\_\_\_\_  
Family Member Two \_\_\_\_\_  
Family Member Three \_\_\_\_\_  
Family Member Four \_\_\_\_\_

10. Please check your family's monthly income (include all sources of income including: salary & wages, retirement, social security, child support/alimony, etc...)?

<input type="checkbox"/>	Less than \$2,000	<input type="checkbox"/>	\$3,501 - \$4,000	<input type="checkbox"/>	\$5,501 - \$6,000
<input type="checkbox"/>	\$2,001 - \$2,500	<input type="checkbox"/>	\$4,001 - \$4,500	<input type="checkbox"/>	\$6,001 - \$6,500
<input type="checkbox"/>	\$2,501 - \$3,000	<input type="checkbox"/>	\$4,501 - \$5,000	<input type="checkbox"/>	\$6,501 - \$7,000
<input type="checkbox"/>	\$3,001 - \$3,500	<input type="checkbox"/>	\$5,001 - \$5,500	<input type="checkbox"/>	Greater than \$7,000

This next section asks a series of questions about household purchases: how much you spend and the location of expenditure. First, provide your best estimate for **monthly expenses per category**. Second, what percent is spent in Tonopah, other Nye County, Esmeralda County, Washoe County, Clark County and outside Nevada? (the total should equal 100 percent). You do not have to estimate the dollars spent in each location, just the percentage.

For example, this household spends about \$400 per month on groceries. 65 percent are purchases from Tonopah stores, 10 percent from other Nye County, 10 percent from Washoe County, 10 percent Clark County, and 5 percent outside Nevada. This household also pays \$1,000 per month on a mortgage to a financial institution that has an address outside Nye County (e.g., California, Chicago, Florida, ...). Finally this household spends approximately \$250 per month on prescriptions of which 75 percent is in Tonopah, 10 percent from Washoe County, and 15 percent outside Nevada.

**EXAMPLE**

Monthly Household Expense Category	Estimated Total Monthly Expense	Estimated Percent In Tonopah	Estimated Percent In Other Nye County	Estimated Percent Esmeralda County	Estimated Percent in Reno, Washoe County	Estimated Percent Las Vegas, Clark County	Estimated Percent Other Nevada	Estimated Percent Outside Nevada
Grocery	\$400	65%	10%		10%	10%		5%
Mortgage	\$1,000							100%
Prescriptions	\$250	75%			10%			15%

NOTE: When determining how to distribute an expense category between areas, record the percentage in the area where payment is made or sent.

<b>Monthly Household Expense Category</b>	<b>Estimated Total Monthly Expense</b>	<b>Estimated Percent In Tonopah</b>	<b>Estimated Percent In Other Nye County</b>	<b>Estimated Percent Esmeralda County</b>	<b>Estimated Percent in Reno, Washoe County</b>	<b>Estimated Percent Las Vegas, Clark County</b>	<b>Estimated Other Nevada</b>	<b>Estimated Percent Outside Nevada</b>
<b>Housing</b>								
Mortgage	\$							
Rent	\$							
Property Tax	\$							
<b>Food</b>								
Grocery/Retail	\$							
Food & Drink away from home	\$							
<b>General Merchandise</b>								
Furniture, Apparel, Home Imp.	\$							
<b>Utilities</b>								
Electricity	\$							
Natural Gas	\$							
Propane	\$							
Water	\$							
Cable/Satellite	\$							
Phone (Home)	\$							
Phone (Cell)	\$							
<b>Medical</b>								
Doctor/Dentist/Optometrlist	\$							
Hospital	\$							
Prescription	\$							



Monthly Household Expense Category	Estimated Total Monthly Expense	Estimated Percent In Tonopah	Estimated Percent In Other Nye County	Estimated Percent Esmeralda County	Estimated Percent in Reno, Washoe County	Estimated Percent Las Vegas, Clark County	Estimated Other Nevada	Estimated Percent Outside Nevada
<b>Professional &amp; Personal Service</b>								
Legal, Day Care, Landscape, etc	\$							
<b>Finance &amp; Insurance</b>								
Vehicle, including recreation	\$							
Credit Card	\$							
Personal Loan	\$							
Vehicle Insurance	\$							
Health Insurance	\$							
Life Insurance	\$							
<b>Transportation</b>								
Gas	\$							
Oil/Maintenance	\$							
Vehicle Registration	\$							
<b>Recreation</b>								
Gaming	\$							
Outdoor (hiking, camping, etc...)	\$							
Indoor, except gaming	\$							
<b>Savings &amp; Retirement</b>	\$							
<b>Other Expenses Not Listed:</b>								
1.	\$							
2.	\$							

If the Tonopah Test Range operations were to close, in your opinion, how do you think it would impact the region?

	-10 Percent Or Greater Reduction	-5 Percent Reduction	0 Percent No Change	+5 Percent Increase	+10 Percent Or Greater Increase
Jobs	[ ]	[ ]	[ ]	[ ]	[ ]
Incomes	[ ]	[ ]	[ ]	[ ]	[ ]
Business	[ ]	[ ]	[ ]	[ ]	[ ]
Overall Quality of Life	[ ]	[ ]	[ ]	[ ]	[ ]

Comments \_\_\_\_\_  
 \_\_\_\_\_  
 \_\_\_\_\_

If current operations at Tonopah Test Range were to change, you and your household would more likely:

- Continue to live at your current resident and locate a new job in Nye/Esmeralda County
- Continue to live at current resident and retire in Nye/Esmeralda County
- Relocate to another community outside Nye/Esmeralda County and locate a new job
- Relocate to another community outside Nye/Esmeralda County and retire
- Other, please explain \_\_\_\_\_

The End! Thank you for your participation. Results of this survey will be provided to your community as soon as the surveys are tabulated and summarized. Please return this survey using the stamped and addressed envelope provided.

## **Nye and Esmeralda County Resident Survey**

Tonopah Test Range (TTR) has been part of Nye County Nevada for approximately sixty years. This Department of Defense facility has been an important economic stabilizer for the Town of Tonopah, Northern Nye County and Esmeralda County. During a recent public scoping meeting in Nye County, the National Nuclear Security Administration (NNSA) made a presentation titled “Complex 2030 Supplemental Programmatic Environmental Impact Statement.” This presentation discussed alternative proposals to close and/or relocate current TTR operations by the year 2030. Changes in current TTR operations could potentially impact the social and economic conditions in the region.

University of Nevada Cooperative Extension and University Center for Economic Development is conducting the following survey to better understand the demographic and economic tendencies in Northern Nye and Esmeralda County’s. This survey will assist with updating key indicators that will provide a more accurate profile of current conditions and provide the foundation to estimate potential impacts from proposed operational changes at the TTR facility.

The following survey is voluntary, anonymous and strictly confidential. All surveys will be pooled to profile average households in the region. Your participation is vital to provide an accurate up-to-date picture of resident living situations, their work and spending patterns in the region.

If you have any questions, please call Amy Meier 775-482-6794 (Tonopah), Buddy Borden 702-222-3130 (Las Vegas), or Tom Harris 775-784-1681 (Reno).

1. What is the zip code where you live?    \_ \_ \_ \_ \_

2. What is the zip code where you work?    \_ \_ \_ \_ \_

3. How many years have you lived in Nye/Esmeralda County?

- |                                  |                                  |                                   |
|----------------------------------|----------------------------------|-----------------------------------|
| <input type="checkbox"/> 1-2 yrs | <input type="checkbox"/> 5-6 yrs | <input type="checkbox"/> 9-10 yrs |
| <input type="checkbox"/> 3-4 yrs | <input type="checkbox"/> 7-8 yrs | <input type="checkbox"/> 10+ yrs  |

4a. How many months per year do you reside in Nye/Esmeralda County?

- |                             |                            |                            |                            |
|-----------------------------|----------------------------|----------------------------|----------------------------|
| <input type="checkbox"/> 12 | <input type="checkbox"/> 9 | <input type="checkbox"/> 6 | <input type="checkbox"/> 3 |
| <input type="checkbox"/> 11 | <input type="checkbox"/> 8 | <input type="checkbox"/> 5 | <input type="checkbox"/> 2 |
| <input type="checkbox"/> 10 | <input type="checkbox"/> 7 | <input type="checkbox"/> 4 | <input type="checkbox"/> 1 |

4b. If you do not live year-round in Nye/Esmeralda County, where do you live the other months?

Write zip code:    \_ \_ \_ \_ \_

5. How many people are there in your household?

*Please include everyone in this home. This could include family, relatives, friends, acquaintances, or roommates.*

- |                                  |                               |  |
|----------------------------------|-------------------------------|--|
| <input type="checkbox"/> Just Me | <input type="checkbox"/> Four | <input type="checkbox"/> Seven           |
| <input type="checkbox"/> Two     | <input type="checkbox"/> Five | <input type="checkbox"/> Eight           |
| <input type="checkbox"/> Three   | <input type="checkbox"/> Six  | <input type="checkbox"/> More than Eight |

6. Please answer some questions about each family member in your household.
- >>Please answer these questions for family member of all ages
  - >>If you have more than five members living in this household, please answer about the four oldest members
  - >>If you are on your own, just answer in the first column
  - >>To keep from getting mixed up, write down their first name or initials at the top of their column

	Family Member ....				
	You	One	Two	Three	Four
>>Put their name or initials here to help you remember who is who					
<b>Year Born</b> >> Write year or age:					
<b>Education</b> >>Check the highest level					
Currently enrolled in K-12					
Some high school but no diploma					
High School diploma					
Some college no diploma					
Associate Degree					
Bachelor Degree					
Graduate Degree					
<b>Ethnicity</b>					
White/Caucasian					
Hispanic Origin					
African American/Black					
Asian or Pacific Islander					
American Indian					
Other					
<b>Employment Status</b>					
Full-Time (annual)					
Part-Time (annual)					
Part-Time (seasonal)					
Unemployed, but looking					
Not employed and not looking					
Retired, seeking work					
Retired, not looking					

	Family Member ....				
	You	One	Two	Three	Four
>>Put their name or initials here to help you remember who is who					
<b>Employment Industry</b>					
Agriculture					
Mining					
Construction					
Casino/Gaming					
Eating & Drinking (outside casino)					
Health Care					
Service (except gaming & health care)					
Retail Trade					
Wholesale Trade					
Utilities					
Transportation					
Finance/Banking					
Real Estate					
Manufacturing					
Education					
Government					
Other (name): _____					

7. Are you or a family member an employee at Tonopah Test Range?

Yes       No

8. Does your, or family members, current company do business with Tonopah Test Range?

Yes       No       Not Sure

*If yes please provide the company name* \_\_\_\_\_

9. Do you or members of your household own a business?

Yes       No

*If yes, please describe* \_\_\_\_\_

10. Does anyone in your household hold more than one job?

Yes  
If yes, what industry

No  
If no, skip to question 11

	Family Member ....				
	You	One	Two	Three	Four
>>Put their name or initials here to help you remember who is who					
<b>Employment Industry</b>					
Agriculture					
Mining					
Construction					
Casino/Gaming					
Eating & Drinking (outside casino)					
Health Care					
Service (except gaming & health care)					
Retail Trade					
Wholesale Trade					
Utilities					
Transportation					
Finance/Banking					
Real Estate					
Manufacturing					
Education					
Government					
Other (name): _____					

11. Please describe you and family member's primary employment title and occupation (i.e. laborer - construction; manger - office operations)

You \_\_\_\_\_  
 Family Member One \_\_\_\_\_  
 Family Member Two \_\_\_\_\_  
 Family Member Three \_\_\_\_\_  
 Family Member Four \_\_\_\_\_

12. Outside your primary employment, please describe any other trade skills that you and family members have but may or may not offer for a fee (i.e. mechanic, construction, plumber, painter, computers, etc...)

You \_\_\_\_\_  
Family Member One \_\_\_\_\_  
Family Member Two \_\_\_\_\_  
Family Member Three \_\_\_\_\_  
Family Member Four \_\_\_\_\_

13. Please check your family's estimated monthly income (include all sources of income including: salary & wages, retirement, social security, child support/alimony, etc...)?

<input type="checkbox"/>	Less than \$2,000	<input type="checkbox"/>	\$3,501 - \$4,000	<input type="checkbox"/>	\$5,501 - \$6,000
<input type="checkbox"/>	\$2,001 - \$2,500	<input type="checkbox"/>	\$4,001 - \$4,500	<input type="checkbox"/>	\$6,001 - \$6,500
<input type="checkbox"/>	\$2,501 - \$3,000	<input type="checkbox"/>	\$4,501 - \$5,000	<input type="checkbox"/>	\$6,501 - \$7,000
<input type="checkbox"/>	\$3,001 - \$3,500	<input type="checkbox"/>	\$5,001 - \$5,500	<input type="checkbox"/>	Greater than \$7,000



This next section asks a series of questions about household purchases: how much you spend and the location of expenditure. First, provide your best estimate for **monthly expenses per category**. Second, what percent is spent in Tonopah, other Nye County, Esmeralda County, Washoe County, Clark County and outside Nevada? (the total should equal 100%). You do not have to estimate the dollars spent in each location, just the percentage.

For example, this household spends about \$400 per month on groceries. 65 percent are purchases from Tonopah stores, 10 percent from other Nye County, 10 percent from Washoe County, 10 percent Clark County, and 5 percent outside Nevada. This household also pays \$1,000 per month on a mortgage to a financial institution that has an address outside Nye County (e.g., California, Chicago, Florida, ...). Finally this household spends approximately \$250 per month on prescriptions of which 75 percent is in Tonopah, 10 percent from Washoe County, and 15 percent outside Nevada.

**EXAMPLE**

Monthly Household Expense Category	Estimated Total Monthly Expense	Estimated Percent In Tonopah	Estimated Percent In Other Nye County	Estimated Percent Esmeralda County	Estimated Percent in Reno, Washoe County	Estimated Percent Las Vegas, Clark County	Estimated Percent Other Nevada	Estimated Percent Outside Nevada
Grocery	\$400	65%	10%		10%	10%		5%
Mortgage	\$1,000							100%
Prescriptions	\$250	75%			10%			15%

NOTE: When determining how to distribute an expense category between areas, record the percentage in the area where payment is made or sent.

<b>Monthly Household Expense Category</b>	<b>Estimated Total Monthly Expense</b>	<b>Estimated Percent In Tonopah</b>	<b>Estimated Percent In Other Nye County</b>	<b>Estimated Percent Esmeralda County</b>	<b>Estimated Percent in Reno, Washoe County</b>	<b>Estimated Percent Las Vegas, Clark County</b>	<b>Estimated Other Nevada</b>	<b>Estimated Percent Outside Nevada</b>
<b>Housing</b>								
Mortgage	\$							
Rent	\$							
Property Tax	\$							
<b>Food</b>								
Grocery/Retail	\$							
Food & Drink away from home	\$							
<b>General Merchandise</b>								
Furniture, Apparel, Home Imp.	\$							
<b>Utilities</b>								
Electricity	\$							
Natural Gas	\$							
Propane	\$							
Water	\$							
Cable/Satellite	\$							
Phone (Home)	\$							
Phone (Cell)	\$							
<b>Medical</b>								
Doctor/Dentist/Optometrlist	\$							
Hospital	\$							
Prescription	\$							

Monthly Household Expense Category	Estimated Total Monthly Expense	Estimated Percent In Tonopah	Estimated Percent In Other Nye County	Estimated Percent Esmeralda County	Estimated Percent in Reno, Washoe County	Estimated Percent Las Vegas, Clark County	Estimated Other Nevada	Estimated Percent Outside Nevada
<b>Professional &amp; Personal Service</b>								
Legal, Day Care, Landscape, etc	\$							
<b>Finance &amp; Insurance</b>								
Vehicle, including recreation	\$							
Credit Card	\$							
Personal Loan	\$							
Vehicle Insurance	\$							
Health Insurance	\$							
Life Insurance	\$							
<b>Transportation</b>								
Gas	\$							
Oil/Maintenance	\$							
Vehicle Registration	\$							
<b>Recreation</b>								
Gaming	\$							
Outdoor (hiking, camping, etc...)	\$							
Indoor, except gaming	\$							
<b>Savings &amp; Retirement</b>	\$							
<b>Other Expenses Not Listed:</b>								
1.	\$							
2.	\$							

If the Tonopah Test Range operations were to close, in your opinion, how do you think it would impact the region?

	-10% Or Greater Reduction	-5% Reduction	0% No Change	+5% Increase	+10% Or Greater Increase
Jobs	[ ]	[ ]	[ ]	[ ]	[ ]
Incomes	[ ]	[ ]	[ ]	[ ]	[ ]
Business	[ ]	[ ]	[ ]	[ ]	[ ]
Overall Quality of Life	[ ]	[ ]	[ ]	[ ]	[ ]

Comments \_\_\_\_\_  
 \_\_\_\_\_  
 \_\_\_\_\_

If current operations at Tonopah Test Range were to change, you and your household would more likely:

- Continue to live at your current resident and locate a new job in Nye/Esmeralda County
- Continue to live at current resident and retire in Nye/Esmeralda County
- Relocate to another community outside Nye/Esmeralda County and locate a new job
- Relocate to another community outside Nye/Esmeralda County and retire
- Other, please explain \_\_\_\_\_

The End! Thank you for your participation. Results of this survey will be provided to your community as soon as the surveys are tabulated and summarized. Please return this survey using the stamped and addressed envelope provided.