



COOPERATIVE EXTENSION

Bringing the University to You

Special Publication 05-23

Social & Economic Characteristics for Colorado River Communities

Including:

**Laughlin, NV
Bullhead City, AZ
Fort Mohave, AZ
Mohave Valley, AZ
Golden Valley, AZ
Needles, CA**

Prepared by:

Buddy Borden
Rob Grumbles
Jim Lopez

University of Nevada Cooperative Extension
University of Nevada, Reno
2345 Red Rock
Las Vegas, NV 89146
702-222-3130

Arizona Cooperative Extension
University of Arizona
101 E. Beale Street, Suite A
Kingman, AZ 86401-5827
928-753-3788

Buddy Borden is an Area Extension Specialist in Community and Economic Development, University of Nevada Cooperative Extension Office, Clark County, University of Nevada, Reno

Rob Grumbles is a County Director / Agent, Agriculture and Natural Resources, University of Arizona Cooperative Extension Office, Mohave County, University of Arizona.

Jim Lopez is an Economist II, University of Nevada Cooperative Extension Office, Clark County, University of Nevada, Reno.

The University of Nevada, Reno is an equal opportunity/affirmative action employer and does not discriminate on the basis of race, color, religion, sex, age, creed, national origin, veteran status, physical or mental disability and sexual orientation in any program or activity it operates. The University of Nevada employs only United States citizens and aliens lawfully authorized to work in the United States.

Acknowledgments

This report is the first in a series of studies currently being conducted on the Laughlin and Bullhead City region to define the social and economic interactions between communities in the region. The program team would like to express a special thanks to the Laughlin Town Manager Office, Laughlin Chamber of Commerce, City of Bullhead City and Bullhead City Economic Development Authority for providing financial support for this program. Finally, the program team would also like to thank the regional advisory committee and business community for their direction and ongoing participation in monthly workshops.

Table of Contents

Introduction	6
Methodology	6
Results	7
Regional Map by Zip Code	8
Population	9
Age	10
Households	14
Families	16
Education	18
Employment	20
Income	27
Housing	33

List of Tables

Table 1.	Population Trend, 2000 and 2004	9
Table 2.	Percent Age Distribution by Community, Region, County, State and U.S., 2000	11
Table 3.	Percent Age Distribution by Community, Region, County, State and U.S., 2004	12
Table 4.	Median Age Trends by Community, County, State, and U.S., 2000 and 2004	13
Table 5.	Household Trends by Community, County, State, and U.S., 2000 and 2004	14
Table 6.	Average Household Size Trends by Community, County, State, and U.S., 2000 and 2004	15
Table 7.	Number of Families Trends by Community, County, State, and U.S., 2000 and 2004	16
Table 8.	Average Family Size Trends by Community, County, State, and U.S., 2000 and 2004	17
Table 9.	Percentage of Population 3+ by School Enrollment, 2000	18
Table 10.	Percentage of Population 25+ by Highest Level of Educational Attainment, 2000	19
Table 11.	Percentage of Age 16+ Labor Force Trends, 2000	20
Table 12.	Percentage of Age 16+ in Labor Force, 2004	21
Table 13.	Total Employment Trends by Community, County, State, and U.S., 2000 and 2004	22
Table 14.	Percent of Employment by Industry, 2004	24
Table 15.	Percent Employment by Occupation, 2004	25
Table 16.	Employment by Occupation Type, 2004	26
Table 17.	Household Income, 2000 and 2004. (Adjusted for Inflation)	27
Table 18.	Percent of Households by Income, 2000	28
Table 19.	Percent of Households by Income, 2004	29
Table 20.	Per Capita Income, 2000 and 2004	30
Table 21.	Average Household Income, 2000 and 2004	31
Table 22.	Median Household Income, 2000 and 2004	32
Table 23.	Housing Units, 2000 and 2004	33
Table 24.	Owner Occupied, Renter Occupied, and Vacant Housing, 2000 and 2004	34
Table 25.	Average and Median Housing Values, 2000 and 2004. (Adjusted for Inflation)	35

List of Figures

Figure 1. Population Trends, 2000 and 2004	9
Figure 2. Total Region Percent Age Distribution, 2000	10
Figure 3. Total Region Percent Age Distribution, 2004	10
Figure 4. Median Age Trends by Community, County, State, and U.S., 2000 and 2004	13
Figure 5. Household Trends by Community, & Region, 2000 and 2004	14
Figure 6. Average Household Size Trends by Community, County, State, and U.S., 2000 and 2004	15
Figure 7. Number of Families Trends by Community, & Region, 2000 and 2004	16
Figure 8. Average Family Size Trends by Community, County, State, and U.S., 2000 and 2004	17
Figure 9. Percentage of Regional Population 3+ by School Enrollment, 2000	18
Figure 10. Population 25+ by Highest Level of Educational Attainment, 2000 ...	19
Figure 11. Percentage of Age 16+ Labor Force Trends, 2000	20
Figure 12. Percentage of Age 16+ in Regional Labor Force, 2004	21
Figure 13. Total Employment Trends by Community and Region, 2000 and 2004	23
Figure 14. Percent of Regional Employment by Economic Sector, 2004	23
Figure 15. Regional Employment by Occupation, 2004	25
Figure 16. Household Income, 2000 and 2004 (Adjusted for Inflation)	27
Figure 17. Per Capita Income, 2000 and 2004	30
Figure 18. Average Household Income, 2000 and 2004	31
Figure 19. Median Household Income, 2000 and 2004	32
Figure 20. Housing Units, 2000 and 2004	33
Figure 21. Average and Median Housing Values, 2000 and 2004 (Adjusted for Inflation)	35

Introduction

Social and economic characteristic of a community is one of the first steps for understanding a community. This is especially important when a community is experiencing change because it provides key information for planning and development purposes. This is the case in the Laughlin and Bullhead City region where double-digit population growth has been occurring over the last few years. This growth is projected to continue for the next several years.

The purpose of this publication is to provide the communities in the region with a baseline understanding of the most current social and economic characteristics and trends. Communities that define the Laughlin and Bullhead region are Laughlin, Nevada; Needles, California; and Arizona communities including Bullhead City, Fort Mohave, Mohave Valley and Golden Valley. Understanding these characteristics and how they are changing will also provide an understanding as to how these communities are linked or dependant on one another. For example, what are the demographics of the population located to the region, where are they living and where are they working? These characteristics are very important when considering community and economic development planning.

Methodology

This analysis is divided into two characteristic areas, social and economic. Social characteristic variables include population, age, households, families, and education. Economic characteristic variables include employment, income, and housing. Sub-variables for each category are also presented. For example, education also includes education enrollment and highest level of education. Each variable is analyzed using the most recent data and is compared to other communities in the region, their respective county, state and United States.

Historically, sub-county social demographic and economic data may have been difficult to access. However, with the development of technology and the Internet this data has become more easily accessible to the benefit of individual communities (i.e. zip code, census tract, etc...). For this study, all data was collected on zip codes and is the best available data at the time of the analysis. In some instances, the best available data was the year 2000.

Secondary data published by various federal and private sources is used in this analysis. First, Bureau of Census is used for 2000 estimates for all social and housing characteristics. Second, ERSI, a private business providing socioeconomic and trade area data, is used for 2004 estimates. Third, County Business Patterns is used for zip code business employment data. Finally, Bureau of Economic Analysis is used for county, state and national employment.

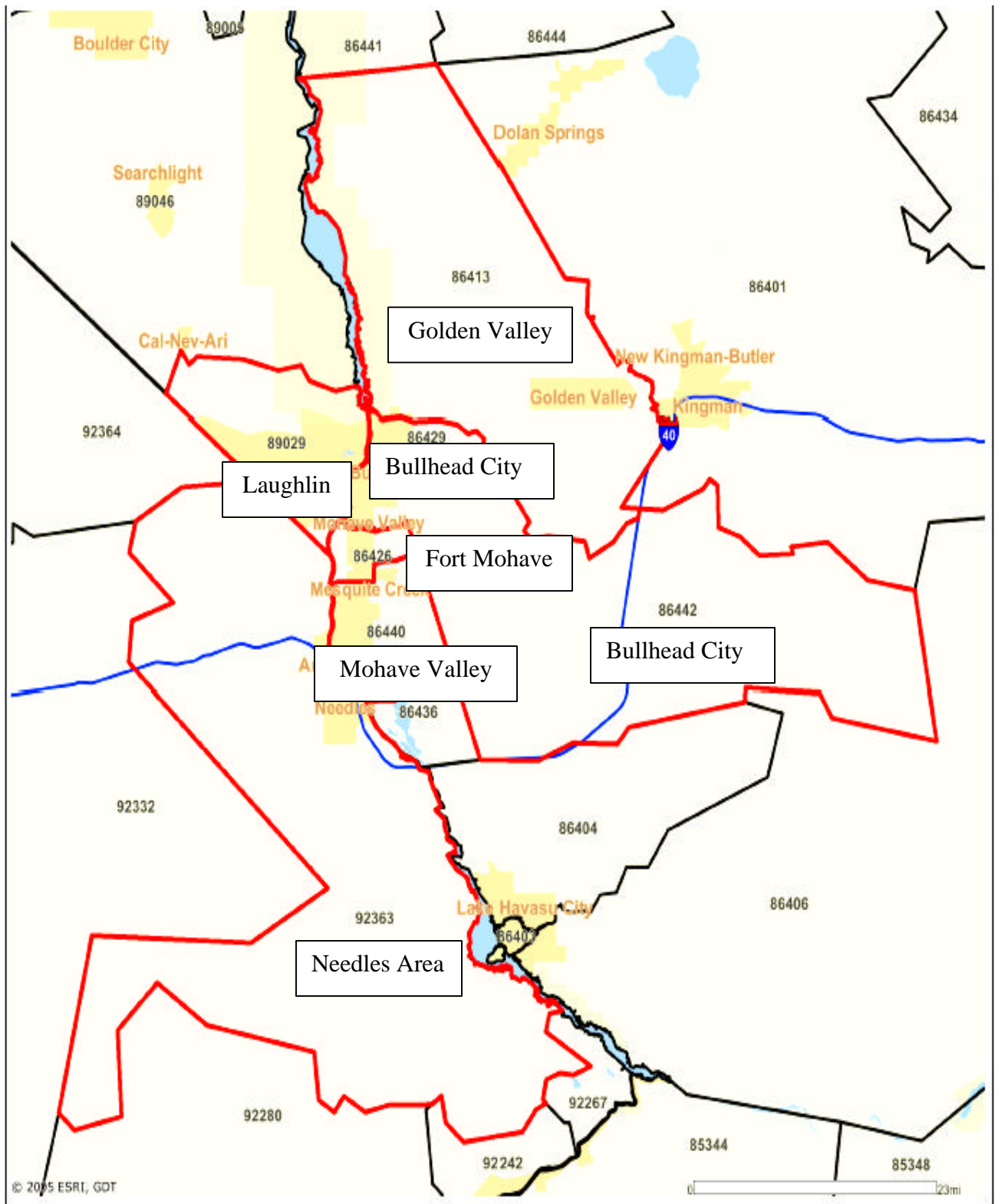
Results

Basic frequency trend analysis was performed on all variables. Each individual community, region, respective county and state and United States is analyzed for each variable. This comparison provides a good benchmark to see how an individual community is performing compared to other communities and areas, the region, or United States. Tables, graphs and summary findings are presented for each variable. Results are presented in the following pages.

General Comments and Conclusions

This publication is intended to show the social and economic characteristics and trends for Colorado River communities. Between 2000 and 2004 all communities have grown in population with the regional population increasing nearly 12 percent. Responding to population increases, the region has also increased industry and employment opportunities. Understanding the region's social and economic characteristics and how they are changing is important for any community or economic development planning.

Regional Map by Zip Code (outline in red)



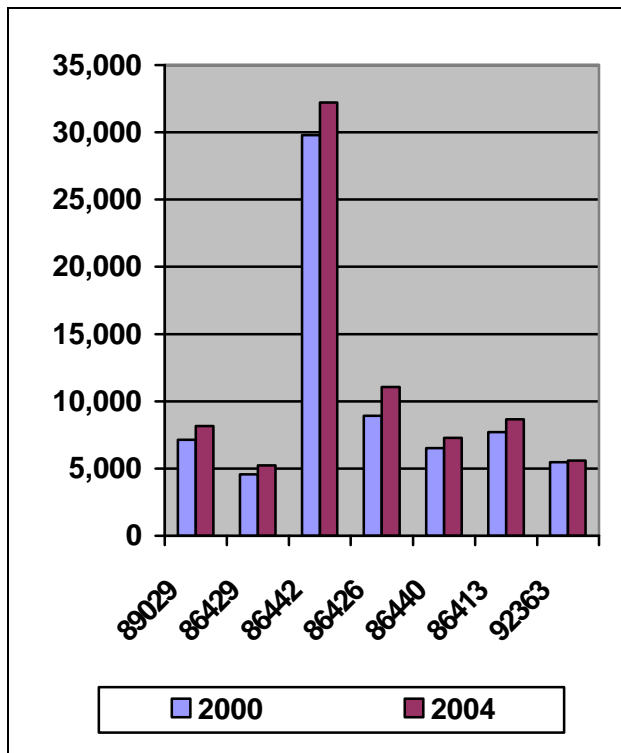
POPULATION

Table 1. Population Trend, 2000 and 2004.

Community (Zip Code)	2000	2004	Percent Change	Number Change
Laughlin (89029)	7,133	8,153	+14.3%	+1,020
Bullhead City (86429)	4,560	5,233	+14.7%	+673
Bullhead City (86442)	29,787	32,222	+8.2%	+2,435
Fort Mohave (86426)	8,918	11,065	+24.1%	+2,147
Mohave Valley (86440)	6,513	7,286	+11.9%	+773
Golden Valley (86413)	7,706	8,670	+12.5%	+964
Needles (92363)	5,469	5,585	+2.1%	+116
Total Region	70,086	78,214	+11.6%	+8,128
Clark County, NV	1,375,765	1,744,946	+26.8%	+369,181
Mohave County, AZ	155,032	182,126	17.5%	+27,094
Nevada	1,998,257	2,366,908	+18.5%	+368,651
Arizona	5,130,632	5,746,102	+12.0%	+615,470
U.S.	281,421,906	295,628,353	+5.0%	+14,206,447

Source: 2000 Census of Population and Housing. ERSI Forecast for 2004.

Figure 1. Population Trends, 2000 and 2004.



Summary:

- ✚ Between 2000 and 2004 the total regional population increased over 8,100 people.
- ✚ Over 40 percent of the region's population is located in Bullhead City (86442).
- ✚ Every community in the region has experienced growth in population with Fort Mohave (86426) experiencing the largest percentage growth +24.1%, followed by Bullhead City (86429) at 14.7% and Laughlin (89029) at 14.3%.
- ✚ Even though Bullhead City (86442) only experienced 8.2% growth in population, it still added over 2,400 new people.

AGE

Figure 2. Total Region Percent Age Distribution, 2000.

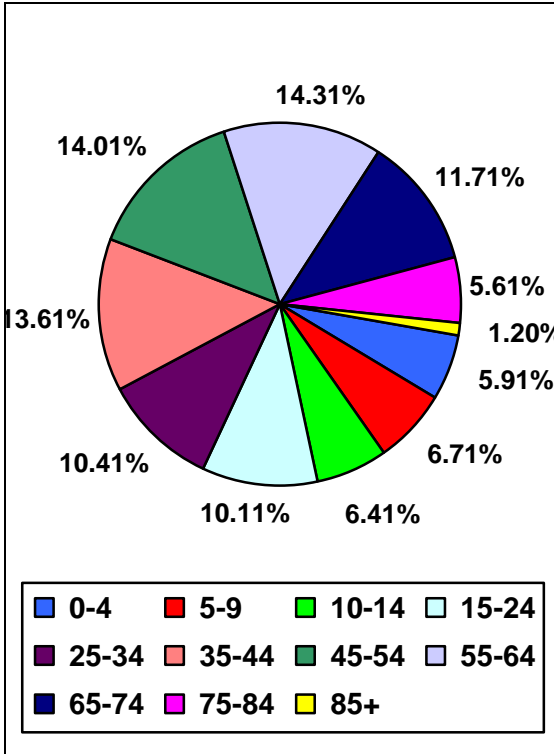
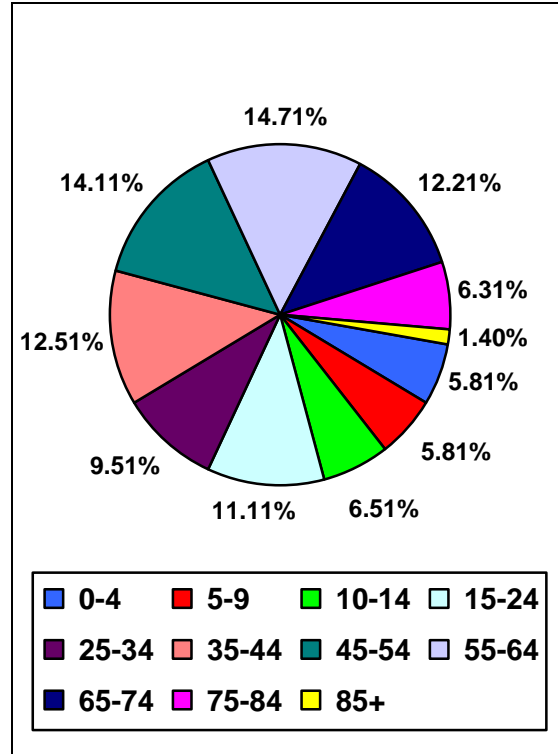


Figure 3. Total Region Percent Age Distribution, 2004.



Summary

- ✚ Overall, the age distribution in the region has changed very little between 2000 and 2004.
 - Ages 0 – 24 represent approximately 29 percent of the regional population.
 - Ages 25 - 44 represent approximately 23 percent of the regional population.
 - Ages 45 – 64 represent approximately 28 percent of the regional population.
 - Ages 65+ represent approximately 19 percent of the regional population.

Table 2. Percent Age Distribution by Community, Region, County, State and U.S., 2000

	0 - 4	5 - 9	10 - 14	15 - 24	25 - 34	35 - 44	45 - 54	55 - 64	65 - 74	75 - 84	85+	Total
PERCENT												
Laughlin (89029)	4.7%	5.2%	5.3%	9.1%	10.1%	13.3%	15.9%	17.8%	13.5%	4.6%	0.6%	100.0%
Bullhead City (86429)	5.3%	4.8%	4.5%	11.1%	10.6%	12.7%	14.3%	17.6%	13.1%	4.8%	1.1%	100.0%
Bullhead City (86442)	6.4%	7.0%	6.0%	10.4%	11.1%	13.1%	13.0%	13.3%	11.5%	6.6%	1.5%	100.0%
Fort Mohave (86426)	6.3%	7.7%	7.4%	9.5%	11.5%	14.8%	13.1%	13.9%	10.8%	4.4%	0.7%	100.0%
Mohave Valley (86440)	5.9%	6.6%	7.6%	10.3%	9.6%	15.3%	14.1%	12.5%	11.4%	5.5%	1.1%	100.0%
Golden Valley (86413)	4.4%	6.1%	6.8%	8.3%	8.0%	13.9%	16.5%	17.1%	12.8%	5.2%	1.0%	100.0%
Needles (92363)	6.7%	7.4%	8.2%	11.7%	9.4%	13.8%	14.8%	11.7%	9.4%	5.1%	1.8%	100.0%
Total Region	5.9%	6.7%	6.4%	10.1%	10.4%	13.6%	14.0%	14.3%	11.7%	5.6%	1.2%	100.0%
Clark County, NV	7.5%	7.6%	6.8%	12.9%	16.2%	16.0%	12.9%	9.4%	6.6%	3.4%	0.8%	100.0%
Mohave County, AZ	6.0%	6.6%	6.6%	10.3%	10.0%	13.3%	13.1%	13.6%	12.3%	6.7%	1.5%	100.0%
Nevada	7.3%	7.5%	7.0%	12.9%	15.3%	16.1%	13.5%	9.5%	6.6%	3.5%	0.9%	100.0%
Arizona	7.5%	7.6%	7.4%	14.2%	14.5%	15.0%	12.2%	8.6%	7.1%	4.6%	1.3%	100.0%
U.S.	6.8%	7.3%	7.3%	13.9%	14.2%	16.0%	13.4%	8.6%	6.5%	4.4%	1.5%	100.0%
TOTAL POPULATION												
Laughlin (89029)												7,133
Bullhead City (86429)												4,560
Bullhead City (86442)												29,787
Fort Mohave (86426)												8,918
Mohave Valley (86440)												6,513
Golden Valley (86413)												7,706
Needles (92363)												5,469
Total Region												70,086

Source: 2000 Census of Population and Housing.

Table 3. Percent Age Distribution by Community, Region, County, State and U.S., 2004

	0 - 4	5 - 9	10 - 14	15 - 24	25 - 34	35 - 44	45 - 54	55 - 64	65 - 74	75 - 84	85+	Total
PERCENT												
Laughlin (89029)	4.6%	4.2%	5.4%	12.7%	8.7%	11.5%	14.4%	17.3%	14.0%	6.2%	0.9%	100.0%
Bullhead City (86429)	5.2%	5.0%	4.8%	9.8%	11.2%	11.0%	13.7%	16.6%	14.9%	6.5%	1.3%	100.0%
Bullhead City (86442)	6.3%	6.2%	6.5%	10.6%	10.5%	12.3%	13.3%	13.9%	11.9%	6.9%	1.7%	100.0%
Fort Mohave (86426)	6.3%	6.4%	7.6%	12.0%	9.2%	14.0%	13.1%	13.0%	11.6%	5.9%	1.0%	100.0%
Mohave Valley (86440)	6.0%	6.0%	6.6%	11.8%	8.9%	13.7%	14.9%	13.4%	11.3%	5.9%	1.4%	100.0%
Golden Valley (86413)	4.3%	5.1%	6.4%	9.5%	6.7%	12.1%	17.0%	18.3%	13.5%	6.0%	1.1%	100.0%
Needles (92363)	6.7%	6.4%	7.7%	13.4%	9.2%	11.7%	15.2%	13.4%	9.4%	5.0%	2.0%	100.0%
Total Region	5.8%	5.8%	6.5%	11.1%	9.5%	12.5%	14.1%	14.7%	12.2%	6.3%	1.4%	100.0%
Clark County, NV	7.5%	6.9%	7.2%	13.1%	14.8%	15.6%	13.0%	10.2%	6.8%	4.0%	1.0%	100.0%
Mohave County, AZ	6.1%	5.6%	6.4%	11.3%	9.1%	11.8%	13.8%	14.1%	12.5%	7.5%	1.8%	100.0%
Nevada	7.3%	6.9%	7.1%	13.4%	14.3%	15.5%	13.5%	10.3%	6.8%	3.8%	1.0%	100.0%
Arizona	7.6%	7.1%	7.3%	14.4%	14.0%	14.1%	12.6%	9.5%	7.1%	4.8%	1.5%	100.0%
U.S.	6.9%	6.7%	7.2%	14.3%	13.4%	15.1%	14.0%	9.8%	6.4%	4.4%	1.7%	100.0%
TOTAL POPULATION												
Laughlin (89029)												8,153
Bullhead City (86429)												5,233
Bullhead City (86442)												32,222
Fort Mohave (86426)												11,065
Mohave Valley (86440)												7,286
Golden Valley (86413)												8,670
Needles (92363)												5,585
Total Region												78,214

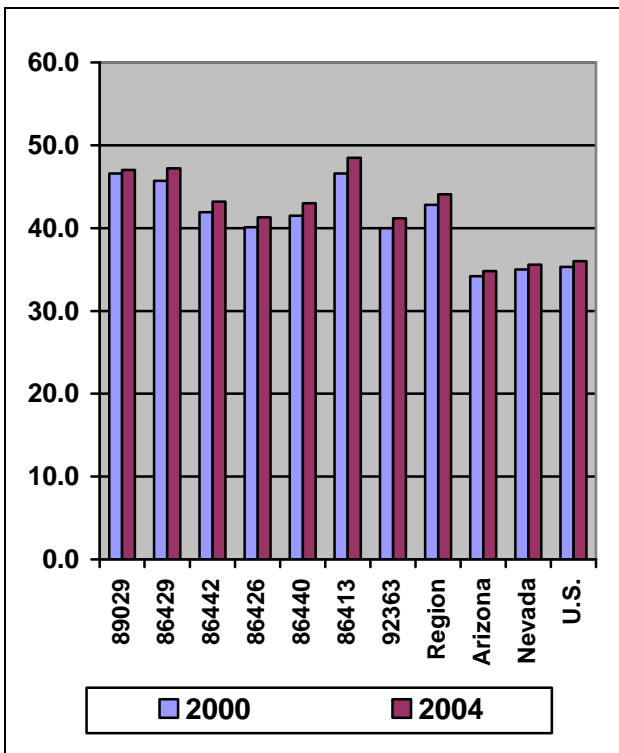
Source: 2000 Census of Population and Housing. ERSI Forecast for 2004.

Table 4. Median Age Trends by Community, County, State, and U.S., 2000 and 2004.

Community (Zip Code)	2000	2004	Percent Change
Laughlin (89029)	46.6	47.0	+0.9%
Bullhead City (86429)	45.7	47.2	+3.3%
Bullhead City (86442)	41.9	43.2	+3.1%
Fort Mohave (86426)	40.1	41.3	+3.0%
Mohave Valley (86440)	41.5	43.0	+3.6%
Golden Valley (86413)	46.6	48.5	+4.1%
Needles (92363)	40.0	41.2	+3.0%
Total Region	42.8	44.1	+3.0%
Clark County, NV	34.4	35.3	+2.6%
Mohave County, AZ	43.0	44.8	+4.2%
Nevada	35.0	35.6	+1.7%
Arizona	34.2	34.8	+1.8%
U.S.	35.3	36.0	+2.0%

Source: 2000 Census of Population and Housing. ERSI Forecast for 2004.

Figure 4. Median Age Trends by Community, County, State, and U.S., 2000 and 2004



Summary:

- Between 2000 and 2004, median age had increased in the region 3%. This trend is greater than the rate of increase at the respective county, state and U.S. level.
- Laughlin (89029) and Golden Valley (86413) consistently report the greatest median age in the region.
- Fort Mohave (86440) and Needles (92363) consistently report the lowest median age in the region. However, still greater than respective county, state and U.S. median age.

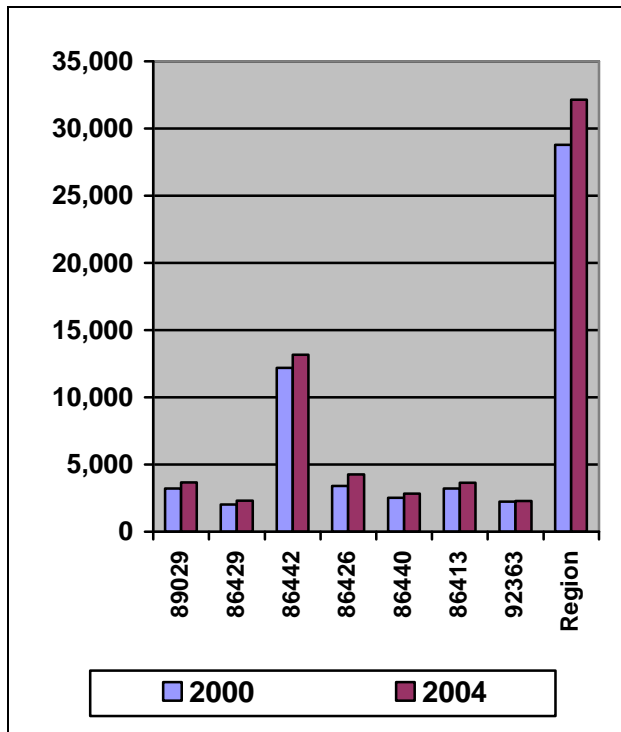
HOUSEHOLDS

Table 5. Household Trends by Community, County, State, and U.S., 2000 and 2004.

Community (Zip Code)	2000	2004	Percent Change	Number Change
Laughlin (89029)	3,208	3,657	+14.0%	+449
Bullhead City (86429)	2,013	2,320	+15.2%	+307
Bullhead City (86442)	12,182	13,158	+8.0%	+976
Fort Mohave (86426)	3,403	4,259	+25.1%	+856
Mohave Valley (86440)	2,516	2,832	+12.6%	+316
Golden Valley (86413)	3,221	3,641	+13.0%	+420
Needles (92363)	2,240	2,281	+1.8%	+41
Total Region	28,783	32,148	+11.7%	+3,365
Clark County, NV	512,253	643,511	+25.6%	+131,258
Mohave County, AZ	62,809	73,569	+17.1%	+10,760
Nevada	751,1665	885,378	+17.9%	+134,213
Arizona	1,901,327	2,133,090	+12.2%	+231,763
U.S.	105,480,101	111,572,974	+5.8%	+6,092,873

Source: 2000 Census of Population and Housing. ERSI Forecast for 2004.

Figure 5. Household Trends by Community, & Region, 2000 and 2004.



Summary:

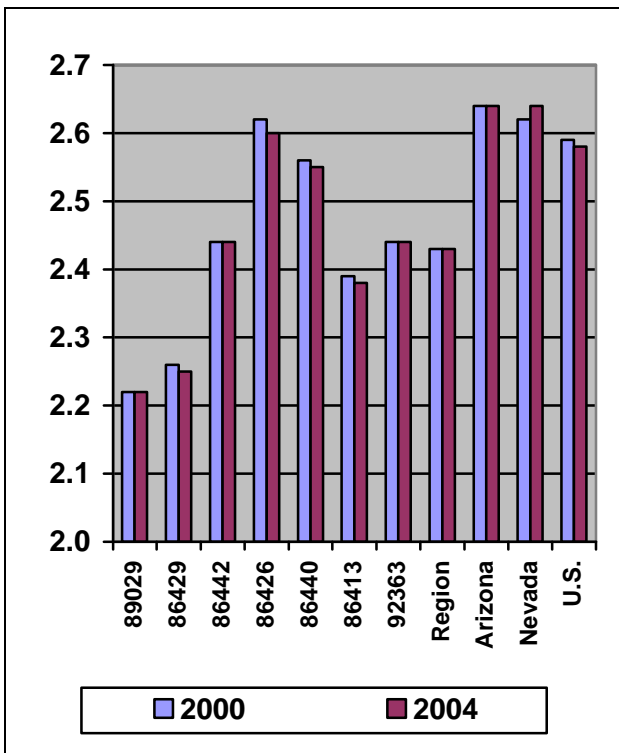
- + Household are defined as total people living in a residence. This could include families, friends, and acquaintances.
- + Consistent with the largest population base, Bullhead City (86442) has the largest number of households of over 13,100.
- + Fort Mohave (86426) reports the largest percentage increase in households at 25.1%, followed by Bullhead City at +15.2% and Laughlin (89029) at +14.0%.

Table 6. Average Household Size Trends by Community, County, State, and U.S., 2000 and 2004.

Community (Zip Code)	2000	2004	Percent Change
Laughlin (89029)	2.22	2.22	0
Bullhead City (86429)	2.26	2.25	-0.5%
Bullhead City (86442)	2.44	2.44	0
Fort Mohave (86426)	2.62	2.60	-0.8%
Mohave Valley (86440)	2.56	2.55	-0.4%
Golden Valley (86413)	2.39	2.38	-0.4%
Needles (92363)	2.44	2.44	0
Total Region	2.43	2.43	0
Clark County, NV	2.65	2.68	+1.1%
Mohave County, AZ	2.45	2.46	+0.4%
Nevada	2.62	2.64	+2.7%
Arizona	2.64	2.64	0
U.S.	2.59	2.58	-0.4%

Source: 2000 Census of Population and Housing. ERSI Forecast for 2004.

Figure 6. Average Household Size Trends by Community, County, State, and U.S., 2000 and 2004.



Summary:

- Between 2000 and 2004, average household size has remained relatively unchanged in the region.
- Consistent across communities in the region, the average household size is smaller than respective counties, state and U.S. averages.

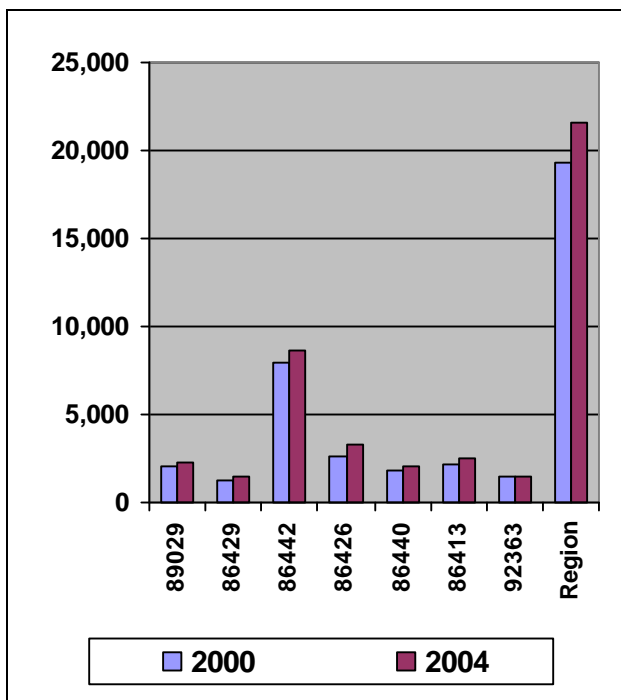
FAMILIES

Table 7. Number of Families Trends by Community, County, State, and U.S., 2000 and 2004.

Community (Zip Code)	2000	2004	Percent Change	Number Change
Laughlin (89029)	2,007	2,241	+11.7%	+234
Bullhead City (86429)	1,294	1,494	+15.5%	+200
Bullhead City (86442)	7,955	8,631	+8.5%	+676
Fort Mohave (86426)	2,618	3,280	+25.3%	+662
Mohave Valley (86440)	1,792	2,024	+12.9%	+232
Golden Valley (86413)	2,189	2,479	+13.2%	+290
Needles (92363)	1,442	1,462	+1.4%	+20
Total Region	19,297	21,611	+12.0%	+2,314
Clark County, NV	339,693	422,842	+24.5%	+83,149
Mohave County, AZ	43,372	50,694	+16.9%	+7,322
Nevada	498,333	584,403	+17.3%	+86,070
Arizona	1,287,367	1,452,416	+12.8%	+165,049
U.S.	71,787,347	75,290,832	+4.9%	+3,503,485

Source: 2000 Census of Population and Housing. ERSI Forecast for 2004.

Figure 7. Number of Families Trends by Community, & Region, 2000 and 2004.



Summary:

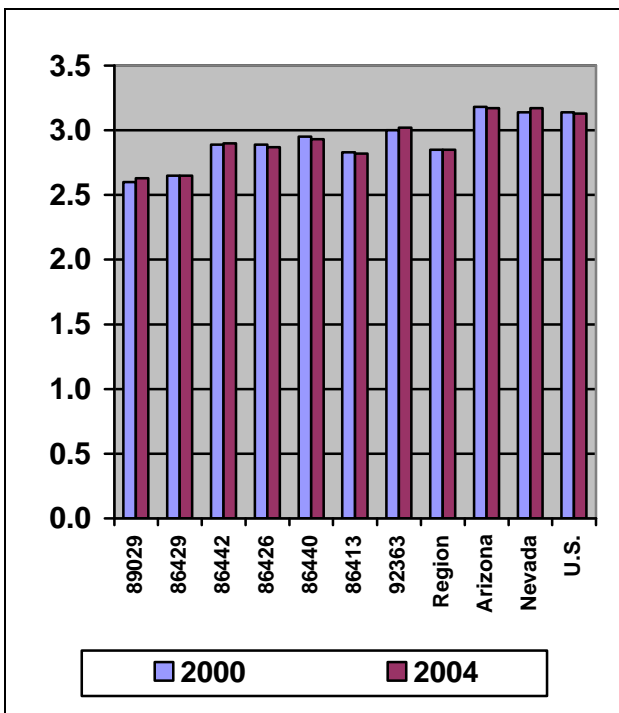
- Families are defined as persons related by birth, marriage, or adoption.
- Fort Mohave (86426) reports the greatest percentage increase of family households in the region (+25.3%).
- Largest concentration of families is located in Bullhead City (86442).
- Smallest concentration of families is located in Needles (92363) and Laughlin (89029).

Table 8. Average Family Size Trends by Community, County, State, and U.S., 2000 and 2004.

Community (Zip Code)	2000	2004	Percent Change
Laughlin (89029)	2.60	2.63	+1.2%
Bullhead City (86429)	2.65	2.65	0
Bullhead City (86442)	2.89	2.90	+0.3%
Fort Mohave (86426)	2.89	2.87	-0.7%
Mohave Valley (86440)	2.95	2.93	-0.7%
Golden Valley (86413)	2.83	2.82	-0.4%
Needles (92363)	3.00	3.02	+0.7%
Total Region	2.85	2.85	0
Clark County, NV	3.17	3.22	+1.6%
Mohave County, AZ	2.87	2.88	+0.3%
Nevada	3.14	3.17	+1.0%
Arizona	3.18	3.17	-0.3%
U.S.	3.14	3.13	-0.3%

Source: 2000 Census of Population and Housing. ERSI Forecast for 2004.

Figure 8. Average Family Size Trends by Community, County, State, and U.S., 2000 and 2004.



Summary:

- Overall the region's average family size has not changed between 2000 and 2004 (2.85).
- Laughlin (89029) reports the largest percentage increase in average family size (+1.2%).
- Consistently, the majority of communities in the region are smaller than their respective county, state and U.S. averages.

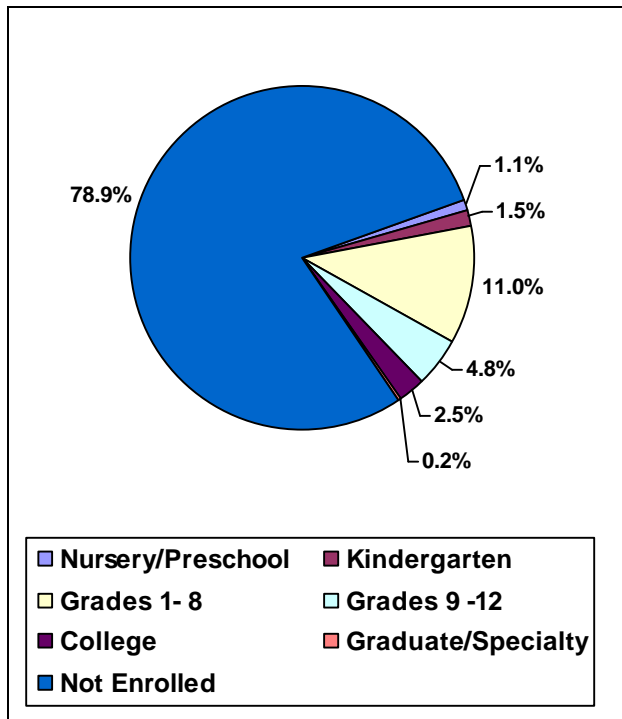
EDUCATION

Table 9. Percentage of Population 3+ by School Enrollment, 2000.

Community (Zip Code)	Nursery/ Preschool	Kinder- garten	Grades 1 - 8	Grades 9 - 12	College	Graduate Specialty	Not Enrolled
Laughlin (89029)	0.7%	1.1%	9.6%	2.6%	1.8%	0.1%	84.1%
Bullhead City (86429)	0.9%	1.2%	7.5%	3.8%	2.7%	0.4%	83.6%
Bullhead City (86442)	1.3%	1.7%	10.7%	4.4%	2.6%	0.2%	79.0%
Fort Mohave (86426)	1.0%	1.7%	12.8%	5.9%	3.1%	0.0%	75.5%
Mohave Valley (86440)	0.8%	0.7%	13.6%	5.4%	3.0%	0.3%	76.1%
Golden Valley (86413)	1.1%	0.8%	10.4%	5.3%	1.2%	0.3%	81.1%
Needles (92363)	1.1%	2.5%	12.2%	7.4%	3.5%	0.0%	73.2%
Total Region	1.1%	1.5%	11.0%	4.8%	2.5%	0.2%	78.9%
Clark County, NV	1.4%	1.6%	12.0%	5.2%	4.1%	0.8%	74.9%
Mohave County, AZ	1.3%	1.3%	11.1%	4.8%	3.1%	0.4%	78.0%
Nevada	1.4%	1.6%	12.1%	5.5%	4.3%	0.9%	74.2%
Arizona	1.7%	1.6%	12.7%	5.8%	5.6%	1.2%	71.4%
U.S.	1.8%	1.5%	12.5%	6.1%	5.3%	1.2%	71.6%

Source: 2000 Census of Population and Housing. ERSI Forecast for 2004.

Figure 9. Percentage of Regional Population 3+ by School Enrollment, 2000.



Summary:

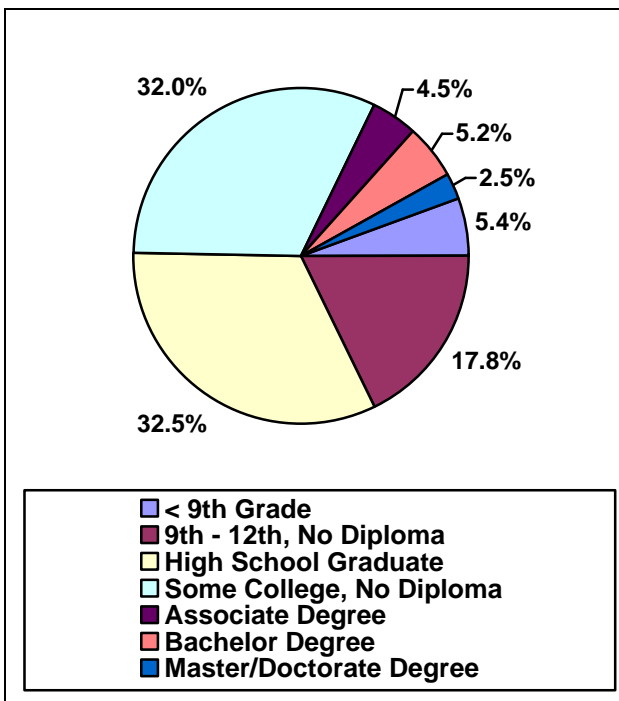
- ✚ Consistent across communities in the region, 25% or less of their population ages 3+ is not enrolled in any type of education. At the county, state, and U.S. level a larger percentage of the population ages 3+ are enrolled in education.
- ✚ Laughlin (89029), Bullhead City (86428) and Golden Valley (86413) report less than 20% of their total population ages 3+ enrolled in education.
- ✚ Fort Mohave (86426) has the largest percentage of population ages 3+ enrolled in education, which is consistent with the largest concentration of household families in the region.

Table 10. Percentage of Population 25+ by Highest Level of Educational Attainment, 2000.

Community (Zip Code)	< 9 th Grade	9 th – 12 th No Diploma	High School Graduate	Some College No Diploma	Associate Degree	Bachelor Degree	Master/Doctorate Degree
Laughlin (89029)	4.2	14.5	35.9	30.8	3.9	8.6	2.0
Bullhead City (86429)	1.6	20.9	33.8	24.7	6.8	8.5	3.7
Bullhead City (86442)	7.7	21.1	34.9	23.7	4.7	4.9	3.0
Fort Mohave (86426)	4.4	15.5	39.5	26.2	4.9	6.3	3.2
Mohave Valley (86440)	4.7	19.5	40.8	23.7	4.4	5.6	1.3
Golden Valley (86413)	5.7	21.8	35.1	25.0	6.0	4.4	2.1
Needles (92363)	7.5	20.2	32.1	26.0	5.7	4.4	4.1
Total Region	6.0	19.6	35.8	35.2	5.0	5.7	2.8
Clark County, NV	6.9	13.6	29.9	26.4	5.9	11.5	5.9
Mohave County, AZ	5.0	17.5	34.9	27.1	5.6	6.4	3.6
Nevada	6.4	12.9	29.3	27.0	6.2	12.1	6.1
Arizona	7.8	11.2	24.3	26.4	6.7	15.2	8.4
U.S.	7.5	12.1	28.6	21.0	6.3	15.5	8.9

Source: 2000 Census of Population and Housing. ERSI Forecast for 2004.

Figure 10. Population 25+ by Highest Level of Educational Attainment, 2000



Summary:

- In 2000, the overall region reports 25.6% of the population ages 25+ has less than a high school education. This is a relatively high percentage when compared to respective county, state and U.S. averages.
- Over one-third of the region's population has at least a high school education. A similar percentage of the population also reports they have received some college education.

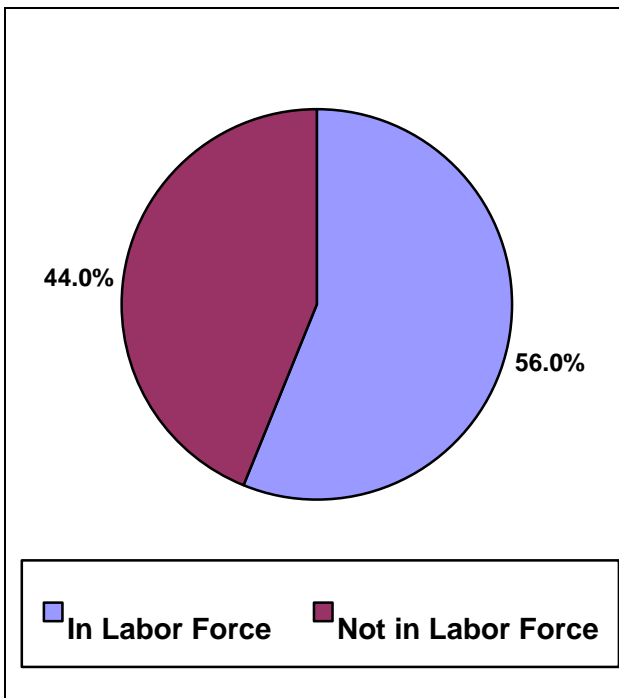
EMPLOYMENT

Table 11. Percentage of Age 16+ Labor Force Trends, 2000

Community (Zip Code)	In Labor Force	Not in Labor Force
Laughlin (89029)	62.6	37.4
Bullhead City (86429)	62.4	37.6
Bullhead City (86442)	54.9	45.1
Fort Mohave (86426)	57.7	42.3
Mohave Valley (86440)	57.0	43.0
Golden Valley (86413)	51.3	48.7
Needles (92363)	50.8	49.2
Total Region	56.0	44.0
Clark County, NV	65.1	34.9
Mohave County, AZ	52.8	47.2
Nevada	65.2	34.8
Arizona	61.1	38.9
U.S.	63.9	36.1

Source: 2000 Census of Population and Housing. ERSI Forecast for 2004.

Figure 11. Percentage of Age 16+ Labor Force Trends, 2000



Summary:

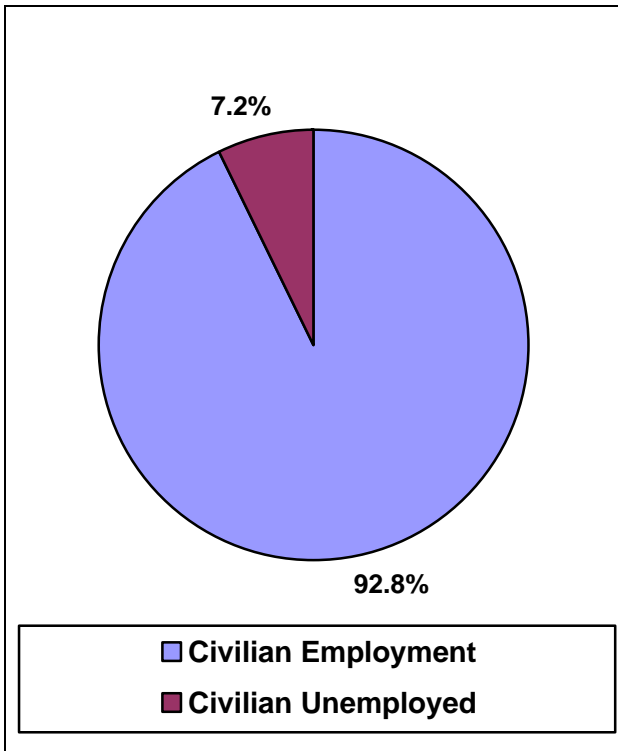
In 2000, over 55% of the population 16+ was considered part of the labor force. This trend is relatively low when compared to respective county, state and U.S. averages. Also, this shows that the region may have a large concentration of retirees.

Table 12. Percentage of Age 16+ in Labor Force, 2004

Community (Zip Code)	Civilian Employment	Civilian Unemployed
Laughlin (89029)	97.5	2.5
Bullhead City (86429)	92.7	7.3
Bullhead City (86442)	92.4	7.6
Fort Mohave (86426)	94.4	5.6
Mohave Valley (86440)	91.4	8.6
Golden Valley (86413)	88.8	11.2
Needles (92363)	92.3	7.7
Total Region	92.8	7.2
Clark County, NV	93.3	6.7
Mohave County, AZ	93.9	6.1
Nevada	93.2	6.8
Arizona	92.1	7.9
U.S.	92.8	7.2

Source: 2000 Census of Population and Housing. ERSI Forecast for 2004.

Figure 12. Percentage of Age 16+ in Regional Labor Force, 2004



Summary:

- In 2004, regional employment and unemployment percentages were similar to U.S. averages.
- Note: employment and unemployment estimated may not accurately reflect current community and regional employment conditions given the recent regional economic activity.

Table 13. Total Employment Trends by Community, County, State, and U.S., 2000 and 2004.

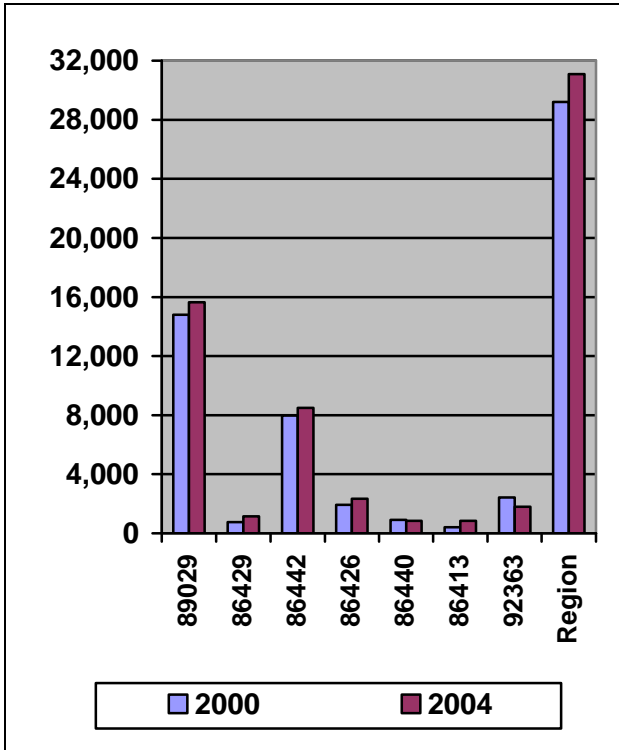
Community (Zip Code)	2000	2004	Percent Change	Number Change
Laughlin (89029)	14,807	15,642	+5.6%	+835
Bullhead City (86429)	759	1,150	+51.5%	+391
Bullhead City (86442)	7,973	8,490	+6.5%	+517
Fort Mohave (86426)	1,927	2,332	+21.0%	+405
Mohave Valley (86440)	905	840	-7.2%	-65
Golden Valley (86413)	409	840	+105.4%	+431
Needles (92363)	2,426	1,804	-25.6%	-622
Total Region	29,206	31,098	+6.5%	+1,892
Clark County, NV	863,502	934,581	+8.2%	+71,079
Mohave County, AZ	54,637	61,966	+13.4%	+7,329
Nevada	1,267,999	1,347,456	+6.3%	+79,457
Arizona	2,819,302	2,926,467	+3.8%	+107,165
U.S.	166,758,800	167,174,400	+0.2%	+415,600

Source: County Business Patterns. ERSI Forecast for 2004.

Secondary sources reporting employment in the region were unreliable because of the cross-community employment migration patterns. This required making employment estimates for each community by place of work. Total employment estimates presented in Table 13 are derived using zip code secondary data provided by County Business Patterns and ERSI.

First County Business Patterns for each community zip code reports only covered employment representing only a portion of a community's total employment. Non-covered employment, employment representing self-employed individuals and firms, is not included in this database. This segment of employment was estimated using the ratio of total covered employment reported for each community in the region. This percentage was then applied against the total reported employment, covered and non-covered, for each community as reported by ERSI.

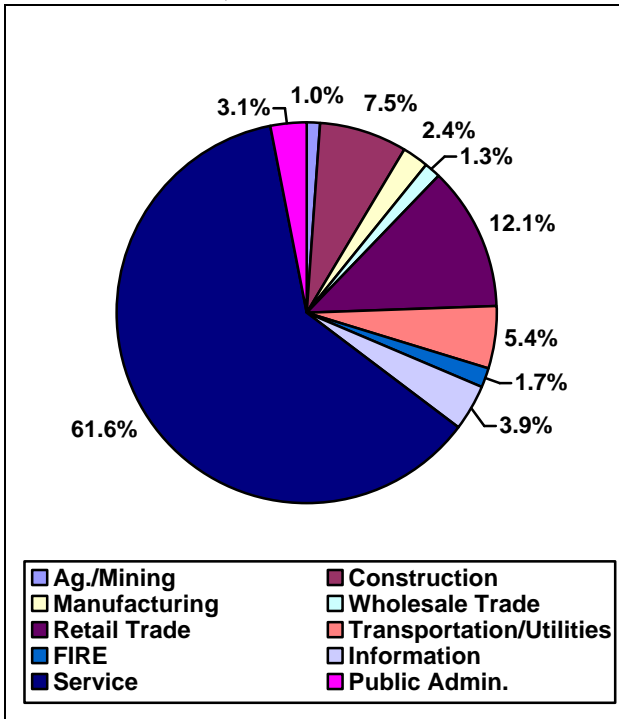
Figure 13. Total Employment Trends by Community and Region, 2000 and 2004.



Summary:

- Between 2000 and 2004 it was estimated that the region’s total employment increased 6.5% or 1,892 jobs.
- With the exception of Needles (92363) and Mohave Valley (86440), each community in the region experienced positive job growth between +5.6 percent in Laughlin and +105.4% in Golden Valley (86413).
- Over 50 percent of the region’s employment is located in Laughlin (89029).

Figure 14. Percent of Regional Employment by Economic Sector, 2004



Summary:

- Nearly two-thirds of the total employment in the region is concentrated in the service sector. This is also consistent across most communities in the region.
- Retail Trade and Construction sectors represent 12.5 percent and 7.7 percent, respectively, of the total regional employment.

Table 14. Percent of Employment by Industry, 2004

	Ag. Mining	Const- ruction	Manuf- actoring	Wholesale Trade	Retail Trade	Transport/ Utilities	Infor- mation	Finance Insurance Real Estate	Service	Public Admin.
PERCENT										
Laughlin (89029)	0.0%	3.4%	0.9%	0.2%	5.6%	4.6%	1.3%	3.9%	78.6%	1.3%
Bullhead City (86429)	1.7%	4.5%	1.1%	0.5%	12.3%	4.2%	2.5%	6.3%	64.1%	2.8%
Bullhead City (86442)	0.7%	7.7%	2.4%	1.1%	12.4%	2.8%	1.8%	3.8%	65.1%	2.3%
Fort Mohave (86426)	1.0%	9.9%	2.5%	1.7%	15.6%	6.7%	0.9%	4.5%	54.5%	2.7%
Mohave Valley (86440)	2.8%	11.1%	2.1%	4.2%	14.7%	7.5%	1.6%	2.7%	46.6%	6.8%
Golden Valley (86413)	1.7%	9.0%	6.3%	0.7%	13.5%	8.1%	2.9%	2.9%	50.7%	4.3%
Needles (92363)	0.6%	4.5%	1.7%	1.0%	8.4%	15.3%	0.3%	4.2%	58.2%	5.7%
Total Region	1.0%	7.5%	2.4%	1.3%	12.1%	5.4%	1.7%	3.9%	61.5%	3.1%
Clark County, NV	0.3%	11.5%	3.3%	2.2%	9.0%	4.1%	2.1%	7.5%	56.5%	3.8%
Mohave County, AZ	1.0%	10.6%	5.1%	2.0%	14.4%	4.8%	1.4%	4.9%	51.1%	4.8%
Nevada	1.0%	11.1%	4.9%	2.4%	9.3%	4.1%	1.9%	6.3%	54.5%	4.5%
Arizona	1.4%	9.5%	9.1%	2.9%	12.0%	5.0%	3.0%	7.5%	43.8%	5.8%
U.S.	1.7%	6.9%	12.4%	3.4%	11.4%	5.2%	2.8%	7.1%	44.3%	4.9%
TOTAL EMPLOYMENT	Total									
Laughlin (89029)	15,642									
Bullhead City (86429)	1,150									
Bullhead City (86442)	8,490									
Fort Mohave (86426)	2,332									
Mohave Valley (86440)	840									
Golden Valley (86413)	840									
Needles (92363)	1,804									
Total Region	31,098									

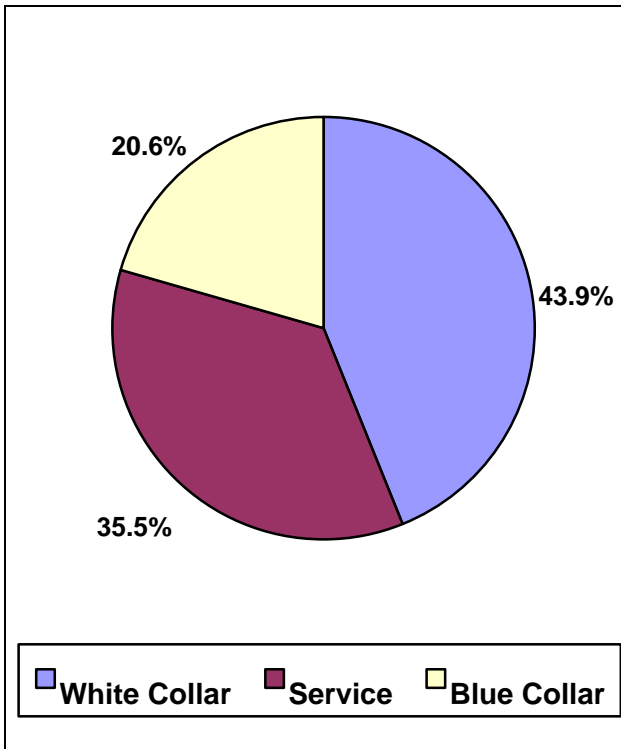
Source: County Business Patterns. ERSI Forecast for 2004.

Table 15. Percent Employment by Occupation, 2004.

Community (Zip Code)	White Collar	Service	Blue Collar
Laughlin (89029)	41.9%	45.6%	12.3%
Bullhead City (86429)	46.8%	36.4%	16.8%
Bullhead City (86442)	42.2%	39.6%	18.2%
Fort Mohave (86426)	49.6%	30.3%	20.1%
Mohave Valley (86440)	44.5%	27.2%	28.3%
Golden Valley (86413)	46.1%	23.7%	30.2%
Needles (92363)	37.0%	33.1%	29.9%
Total Region	43.9%	35.5%	20.6%
Clark County, NV	53.4%	26.8%	19.8%
Mohave County, AZ	48.4%	27.8%	23.8%
Nevada	53.2%	24.1%	27.7%
Arizona	60.8%	17.2%	21.9%
U.S.	60.8%	15.7%	23.5%

Source: ERSI Forecast for 2004.

Figure 15. Regional Employment by Occupation, 2004.



Summary:

- ✚ White collar employees refer to employees who hold professional, managerial or administrative positions
- ✚ Blue collar employees refer to employees who perform manual labor.
- ✚ White collar employment represents 40-45% total employment in each community.
- ✚ Service employment represents between 45.7% in Laughlin (89029) and 23.7% in Golden Valley (86413).
- ✚ Blue collar employment represents between 30.2% in Golden Valley (86413) and 12.3% in Laughlin (89029).

Table 16. Employment by Occupation Type, 2004

	Management/ Professional	Service	Sales/Office & Administrative Support	Farming/ Fishing/ Forestry	Construction/ Extraction/ Maintenance	Production/ Transportation/ Material Moving
PERCENT						
Laughlin (89029)	14.5%	45.6%	27.5%	0.3%	8.0%	4.1%
Bullhead City (86429)	23.4%	36.4%	23.4%	1.4%	7.7%	7.7%
Bullhead City (86442)	15.5%	39.6%	26.7%	0.3%	11.0%	6.9%
Fort Mohave (86426)	18.3%	30.3%	31.3%	0.4%	11.8%	7.9%
Mohave Valley (86440)	16.6%	27.2%	27.9%	1.1%	16.4%	10.8%
Golden Valley (86413)	18.5%	23.7%	27.6%	0.7%	15.0%	14.5%
Needles (92363)	21.4%	33.1%	15.7%	0.3%	12.1%	17.4%
Total Region	17.2%	35.6%	26.7%	0.5%	11.5%	8.5%
Clark County, NV	27.1%	26.8%	26.2%	0.1%	12.3%	7.4%
Mohave County, AZ	22.2%	27.8%	26.2%	0.3%	13.8%	9.7%
Nevada	27.0%	24.1%	26.1%	0.2%	13.3%	9.2%
Arizona	33.4%	17.2%	27.5%	0.5%	11.8%	9.6%
U.S.	34.5%	15.7%	26.3%	0.6%	9.4%	13.5%

Source: ERSI Forecast for 2004.

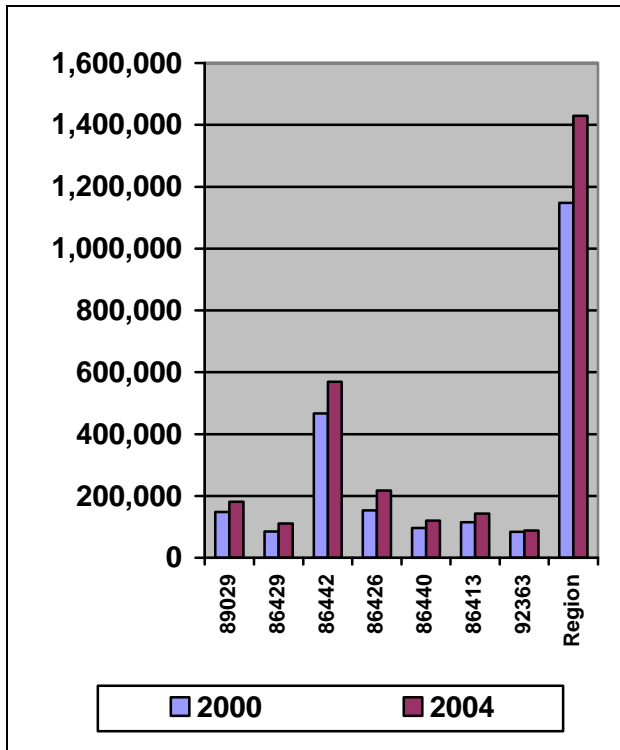
INCOME

Table 17. Household Income, 2000 and 2004. (Adjusted for Inflation)

Community (Zip Code)	2000	2004	Percent Change	Number Change
<i>Thousand of Dollars</i>				
Laughlin (89029)	148,257	181,252	+22.2%	+33,005
Bullhead City (86429)	85,379	110,367	+29.3%	+24,988
Bullhead City (86442)	466,266	568,923	+22.0%	+102,657
Fort Mohave (86426)	152,985	217,700	+42.3%	+64,715
Mohave Valley (86440)	96,166	120,088	+24.9%	+23,922
Golden Valley (86413)	115,347	143,062	+24.0%	+27,715
Needles (92363)	83,359	87,941	+5.5%	+4,582
Total Region	1,147,319	1,429,341	+24.6%	+282,022

Source: 2000 Census of Population and Housing. ERSI Forecast for 2004.

Figure 16. Household Income, 2000 and 2004 (Adjusted for Inflation)



Summary:

- + Between 2000 and 2004, regional Household Income increased 24.6 percent. All communities increased.
- + Fort Mohave (86426) reported the greatest percentage increase, +42.3% followed by Bullhead City (86429) at 29.3% and Mohave Valley (86440) at 24.9%.
- + Bullhead City (86442) experienced the greatest dollar increase of over \$102 million followed by Fort Mohave (86440) at \$64,715 million and Laughlin (89029) at \$33,005 million.

Table 18. Percent of Households by Income, 2000

	Less than \$15,000	\$15,000 to \$24,999	\$25,000 to \$34,999	\$35,000 to \$49,999	\$50,000 to \$74,999	\$75,000 to \$99,999	\$100,000 to \$149,999	\$150,000 to \$199,999	\$200,000+	Total
PERCENT										
Laughlin (89029)	11.0%	15.8%	20.1%	19.0%	20.8%	8.0%	2.6%	1.7%	0.9%	100.0%
Bullhead City (86449)	15.8%	20.3%	19.7%	21.3%	13.3%	4.7%	3.1%	0.3%	1.6%	100.0%
Bullhead City (86442)	19.3%	23.2%	16.7%	19.5%	12.9%	4.6%	2.2%	0.4%	1.0%	100.0%
Fort Mohave (86426)	12.8%	15.5%	17.9%	19.6%	21.0%	9.6%	2.0%	0.8%	0.7%	100.0%
Mohave Valley (86440)	18.6%	16.6%	18.1%	22.6%	15.2%	5.6%	2.9%	0.4%	0.0%	100.0%
Golden Valley (86413)	23.8%	21.2%	17.3%	17.4%	12.4%	4.1%	2.5%	0.3%	1.0%	100.0%
Needles (92363)	30.6%	18.6%	10.5%	13.5%	16.4%	6.5%	2.6%	0.6%	0.7%	100.0%
Total Region	18.7%	20.1%	17.1%	19.2%	15.2%	5.7%	2.4%	0.6%	0.9%	100.0%
Clark County, NV	12.2%	12.4%	13.1%	18.1%	21.5%	11.1%	7.5%	1.9%	2.1%	100.0%
Mohave County, AZ	18.7%	19.7%	17.0%	18.5%	15.2%	6.2%	3.1%	0.6%	1.0%	100.0%
Nevada	12.4%	12.3%	13.1%	18.1%	21.7%	11.1%	7.4%	1.8%	2.1%	100.0%
Arizona	14.9%	13.9%	14.0%	17.5%	19.2%	9.7%	6.9%	1.9%	2.0%	100.0%
U.S.	15.8%	12.8%	12.8%	16.5%	19.5%	10.2%	7.7%	2.2%	2.4%	100.0%

Source: 2000 Census of Population and Housing.

Table 19. Percent of Households by Income, 2004

	Less than \$15,000	\$15,000 to \$24,999	\$25,000 to \$34,999	\$35,000 to \$49,999	\$50,000 to \$74,999	\$75,000 to \$99,999	\$100,000 to \$149,999	\$150,000 to \$199,999	\$200,000+	Total
PERCENT										
Laughlin (89029)	8.9%	13.6%	15.0%	20.5%	24.5%	8.7%	5.6%	1.3%	1.9%	100.0%
Bullhead City (86449)	13.9%	14.6%	17.5%	22.7%	16.0%	6.8%	5.3%	1.0%	2.2%	100.0%
Bullhead City (86442)	15.8%	19.7%	15.5%	20.7%	15.3%	6.2%	4.2%	1.0%	1.5%	100.0%
Fort Mohave (86426)	9.5%	13.1%	15.9%	16.4%	24.0%	11.5%	7.3%	0.8%	1.5%	100.0%
Mohave Valley (86440)	14.3%	15.3%	13.0%	21.6%	20.8%	8.2%	6.1%	0.6%	0.2%	100.0%
Golden Valley (86413)	20.8%	18.6%	16.4%	16.6%	15.6%	5.7%	4.5%	0.5%	1.4%	100.0%
Needles (92363)	26.7%	18.6%	10.8%	14.7%	14.2%	8.8%	4.2%	0.9%	0.9%	100.0%
Total Region	15.3%	17.2%	15.2%	19.4%	18.0%	7.5%	5.1%	0.9%	1.4%	100.0%
Clark County, NV	9.7%	9.6%	11.2%	16.2%	21.5%	13.6%	12.0%	3.1%	3.3%	100.0%
Mohave County, AZ	14.4%	15.4%	15.4%	18.6%	17.9%	9.0%	6.3%	1.4%	1.7%	100.0%
Nevada	10.3%	10.2%	11.2%	16.6%	22.0%	12.5%	11.4%	2.8%	3.1%	100.0%
Arizona	11.7%	11.1%	11.5%	16.4%	20.0%	11.5%	11.3%	3.0%	3.4%	100.0%
U.S.	13.5%	11.2%	11.3%	15.7%	19.3%	11.5%	10.9%	3.0%	3.5%	100.0%

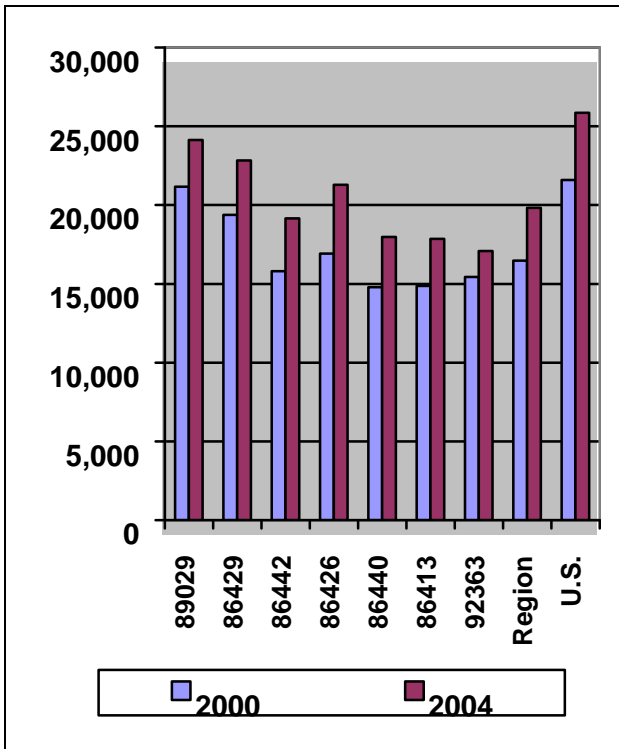
Source: 2000 Census of Population and Housing. ERSI Forecast for 2004.

Table 20. Per Capita Income, 2000 and 2004.

Community (Zip Code)	2000	2004	Percent Change	Number Change
Laughlin (89029)	21,160	24,124	+14.0%	+2,964
Bullhead City (86429)	19,381	22,839	+17.8%	+3,458
Bullhead City (86442)	15,803	19,160	+21.2%	+3,357
Fort Mohave (86426)	16,918	21,292	+25.9%	+4,374
Mohave Valley (86440)	14,796	17,984	+21.5%	+3,188
Golden Valley (86413)	14,876	17,857	+20.0%	+2,981
Needles (92363)	15,429	17,079	+10.7%	+1,650
Total Region	16,481	19,823	+20.2%	+3,342
Clark County, NV	21,785	25,866	+18.7%	+4,081
Mohave County, AZ	16,788	20,882	+24.4%	+4,094
Nevada	21,989	26,208	+19.2%	+4,219
Arizona	20,275	25,625	+26.4%	+5,350
U.S.	21,587	25,866	+19.8%	+4,279

Source: 2000 Census of Population and Housing. ERSI Forecast for 2004.

Figure 17. Per Capita Income, 2000 and 2004



Summary:

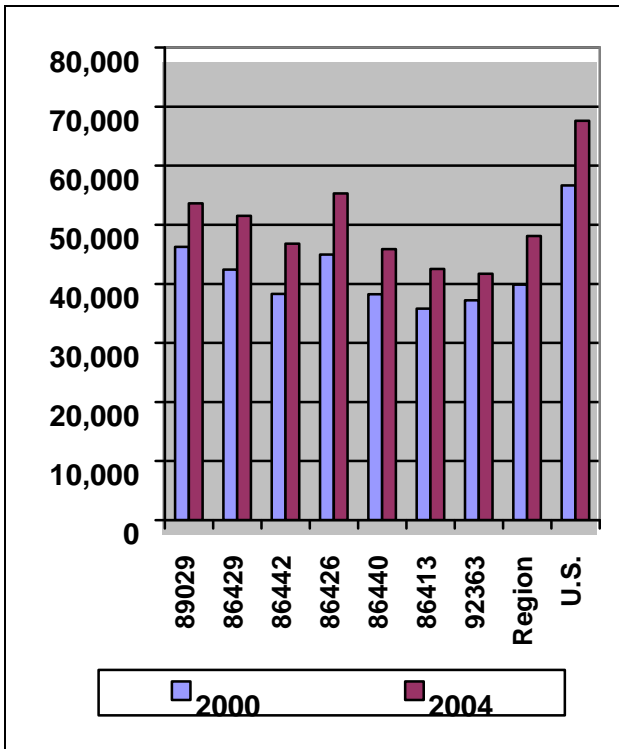
- Between 2000 and 2004 per capita income has grown approximately 20% in the region.
- Although per capita income has experienced double digit percentage growth between 2000 and 2004, every community in the region still lags behind their respective state and U.S. averages.
- In 2004, Laughlin (89029) reported the greatest per capita income of \$24,124, followed by Bullhead City (86429) at \$22,839 and Fort Mohave (86429) at \$21,292.

Table 21. Average Household Income, 2000 and 2004.

Community (Zip Code)	2000	2004	Percent Change	Number Change
Laughlin (89029)	46,215	53,637	+16.1%	+7,422
Bullhead City (86429)	42,414	51,483	+21.4%	+9,069
Bullhead City (86442)	38,275	46,792	+22.3%	+8,517
Fort Mohave (86426)	44,956	55,317	+23.0%	+10,361
Mohave Valley (86440)	38,222	45,890	+20.1%	+7,668
Golden Valley (86413)	35,811	42,522	+18.7%	+6,711
Needles (92363)	37,214	41,723	+12.1%	+4,509
Total Region	39,861	48,116	+20.7%	+8,255
Clark County, NV	57,569	69,392	+20.5%	+11,823
Mohave County, AZ	41,092	51,438	+25.2%	+10,346
Nevada	57,469	69,144	+20.3%	+11,675
Arizona	53,926	68,253	+26.6%	+14,327
U.S.	56,644	67,572	+19.3%	+10,928

Source: 2000 Census of Population and Housing. ERSI Forecast for 2004.

Figure 18. Average Household Income, 2000 and 2004.



Summary:

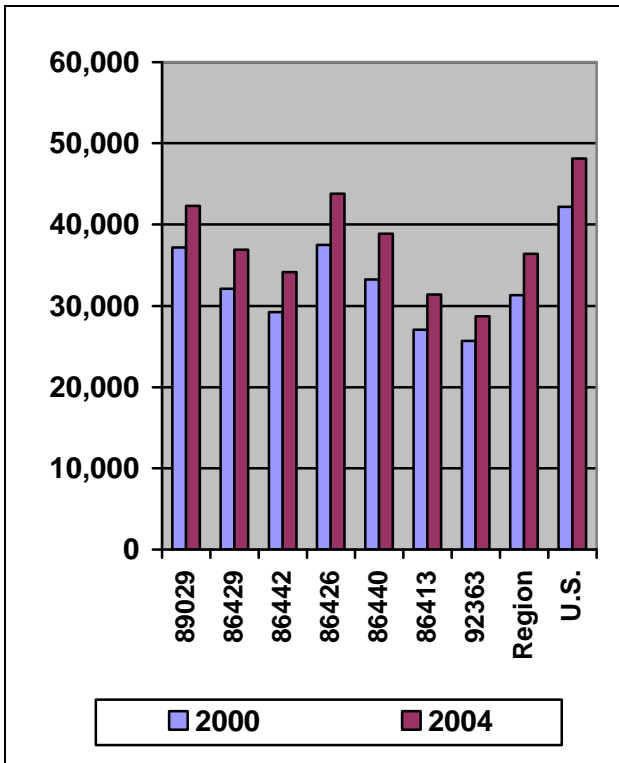
- Between 2000 and 2004, average household income has increased nearly 21% in the region. This trend was also consistent with the majority of communities in the region.
- Community and regional average household income is significantly less than county, state and U.S. averages. The one exception is Fort Mohave (86426) which reports higher than average household income when compared to Mohave County.

Table 22. Median Household Income, 2000 and 2004.

Community (Zip Code)	2000	2004	Percent Change	Number Change
Laughlin (89029)	37,179	42,307	+13.8%	+5,128
Bullhead City (86429)	32,108	36,891	+14.9%	+4,783
Bullhead City (86442)	29,214	34,162	+16.9%	+4,948
Fort Mohave (86426)	37,479	43,775	+16.8%	+6,296
Mohave Valley (86440)	33,229	38,853	+16.9%	+5,624
Golden Valley (86413)	27,060	31,400	+16.0%	+4,340
Needles (92363)	25,705	28,713	+11.7%	+3,008
Total Region	31,303	36,399	+16.3%	+5,086
Clark County, NV	44,650	53,307	+19.4%	+8,657
Mohave County, AZ	31,523	38,350	+21.7%	+6,827
Nevada	44,614	51,572	+15.6%	+6,958
Arizona	40,582	49,168	+21.1%	+8,586
U.S.	42,164	48,124	+14.1%	+5,960

Source: 2000 Census of Population and Housing. ERSI Forecast for 2004.

Figure 19. Median Household Income, 2000 and 2004



Summary:

- + Median household income is the midpoint range of all reported household incomes.
- + Overall, the region's median household income has increased 16.3%. This percentage growth rate is consistent across most communities.
- + Median household income trends follow similar per capita and average household trends; lagging behind respective county, state and U.S. averages.

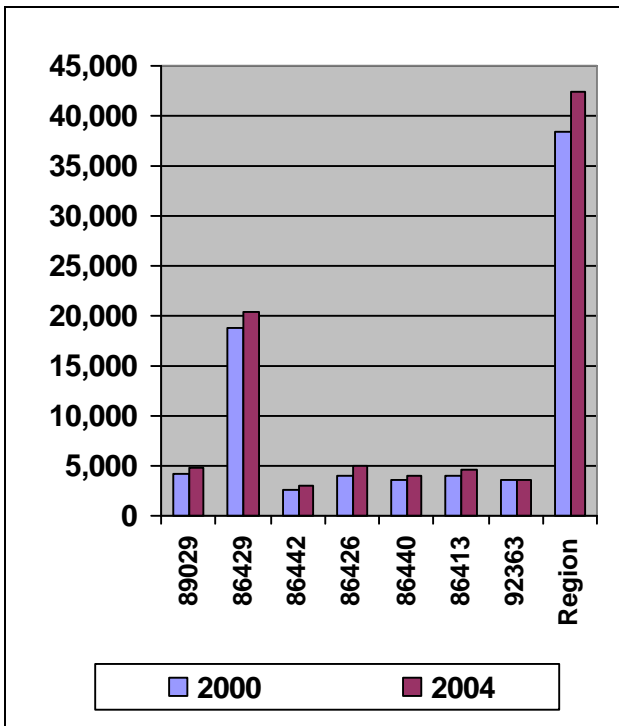
HOUSING

Table 23. Housing Units, 2000 and 2004.

Community (Zip Code)	2000	2004	Percent Change	Number Change
Laughlin (89029)	4,187	4,752	+13.5%	+565
Bullhead City (86429)	18,898	20,458	+8.2%	+1,560
Bullhead City (86442)	2,546	2,920	+14.7%	+374
Fort Mohave (86426)	4,035	5,055	+25.3%	+1,020
Mohave Valley (86440)	3,602	4,024	+11.7%	+422
Golden Valley (86413)	4,001	4,510	+12.7%	+509
Needles (92363)	3,618	3,690	+2.0%	+72
Total Region	38,341	42,489	+10.8%	+4,148
Clark County, NV	559,799	708,104	+26.5%	+148,305
Mohave County, AZ	80,062	94,771	+18.4%	+14,709
Nevada	827,457	975,655	+17.9%	+148,198
Arizona	2,189,189	2,454,572	+12.1%	+265,383
U.S.	115,904,641	122,700,920	+5.9%	+6,796,279

Source: 2000 Census of Population and Housing. ERSI Forecast for 2004.

Figure 20. Housing Units, 2000 and 2004.



Summary:

- + + Strong positive housing unit construction is reported for all communities in the region.
- + + Between 2000 and 2004 the region added 4,148 new housing units. However, most recent housing start data will more than likely show even greater numbers with the development and expansion of several residential communities.

Table 24. Owner Occupied, Renter Occupied, and Vacant Housing, 2000 and 2004.

	2000 Owner Occupied	2000 Renter Occupied	2000 Vacant	2000 Total	2004 Owner Occupied	2004 Renter Occupied	2004 Vacant	2004 Total
NUMBER								
Laughlin (89029)	1,190	2,018	979	4,187	1,335	2,322	1,095	4,752
Bullhead City (86449)	1,049	964	533	2,546	1,280	1,040	600	2,920
Bullhead City (86442)	7,604	4,578	4,150	16,332	8,872	4,286	4,380	17,538
Fort Mohave (86426)	2,717	686	632	4,035	3,310	949	796	5,055
Mohave Valley (86440)	1,930	586	1,086	3,602	2,290	542	1,192	4,024
Golden Valley (86413)	2,736	485	780	4,001	3,127	514	869	4,510
Needles (92363)	1,307	933	1,378	3,618	1,359	922	1,409	3,690
Total Region	18,533	10,250	9,558	38,341	21,573	10,575	10,341	42,489
PERCENT								
Laughlin (89029)	28.4%	48.2%	23.4	100.0%	28.1%	48.9%	23.0%	100.0%
Bullhead City (86449)	40.9%	37.6%	21.6	100.0%	43.8%	35.6%	20.5%	100.0%
Bullhead City (86442)	46.6%	28.0%	25.4	100.0%	50.6%	24.4%	25.0%	100.0%
Fort Mohave (86426)	67.3%	17.0%	15.7	100.0%	65.5%	18.8%	15.7%	100.0%
Mohave Valley (86440)	53.6%	16.3%	30.1	100.0%	56.9%	13.5%	29.6%	100.0%
Golden Valley (86413)	68.4%	12.1%	19.5	100.0%	69.3%	11.4%	19.3%	100.0%
Needles (92363)	36.1%	25.8%	38.1	100.0%	36.8%	25.0%	38.2%	100.0%
Total Region	48.3%	26.7%	24.9	100.0%	50.8%	24.9%	24.3%	100.0%
Clark County, NV	54.1%	37.4%	8.5%	100.0%	56.4%	34.5%	9.1%	100.0%
Mohave County, AZ	57.7%	20.7%	21.5%	100.0%	58.7%	18.9%	22.4%	100.0%
Nevada	55.3%	35.5%	9.2%	100.0%	56.8%	33.9%	9.3%	100.0%
Arizona	59.1%	27.8%	13.1%	100.0%	60.0%	26.9%	13.1%	100.0%
U.S.	60.2%	30.8%	7.0%	100.0%	61.2%	29.8%	9.1%	100.0%

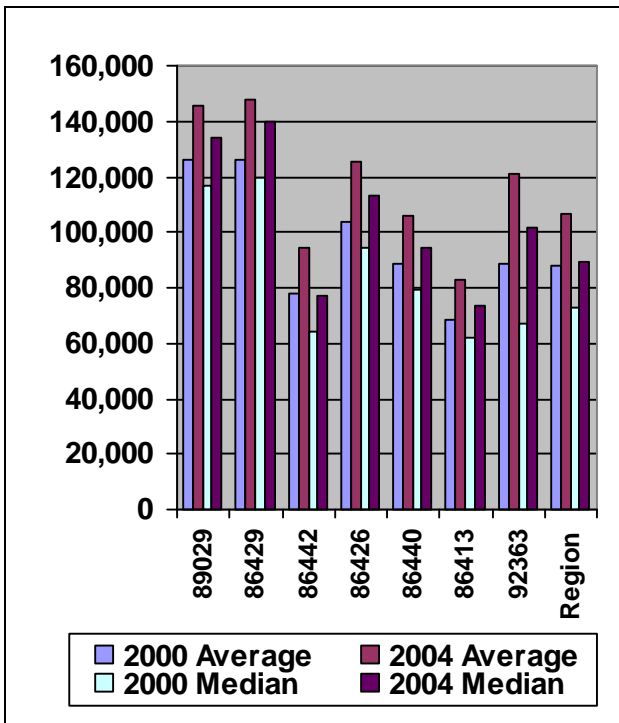
Source: 2000 Census of Population and Housing. ERSI Forecast for 2004.

Table 25. Average and Median Housing Values, 2000 and 2004. (Adjusted for Inflation)

Community (Zip Code)	2000 Average	2000 Median	2004 Average	2004 Median
Laughlin (89029)	\$125,838	\$116,984	\$145,464	\$134,376
Bullhead City (86429)	\$125,886	\$119,949	\$147,706	\$139,630
Bullhead City (86442)	\$78,095	\$64,321	\$94,072	\$76,967
Fort Mohave (86426)	\$104,103	\$94,450	\$125,468	\$113,003
Mohave Valley (86440)	\$88,428	\$78,991	\$105,613	\$94,525
Golden Valley (86413)	\$68,280	\$61,850	\$82,551	\$73,844
Needles (92363)	\$88,390	\$67,222	\$120,854	\$101,517
Total Region	\$87,742	\$73,150	\$106,576	\$89,349
Clark County, NV	\$153,519	\$132,186	\$197,493	\$218,119
Mohave County, AZ	\$95,265	\$79,547	\$114,233	\$97,323
Nevada	\$157,238	\$132,514	\$193,388	\$161,800
Arizona	\$139,461	\$109,424	\$164,624	\$129,431
U.S.	\$151,910	\$111,833	\$190,750	\$134,822

Source: 2000 Census of Population and Housing. ERSI Forecast for 2004.

Figure 21. Average and Median Housing Values, 2000 and 2004. (Adjusted for Inflation).



Summary:

- Between 2000 and 2004, average and median housing values show strong growth.
- Laughlin (89029) and Bullhead City (86429) report the highest average and median values of approximately \$145,000 and \$138,000, respectively. Fort Mohave (86426) and Needles (92363) also report average and median values above the regional averages.