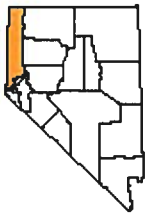


### Washoe County, NV in Profile

Part of: Reno-Sparks NV, Metropolitan Area  
 Part of: Reno-Sparks-Fernley NV, Combined Statistical Area



**Washoe County** is one of 17 counties and county equivalent cities in Nevada. It has 6,342.3 sq. miles in land area and a population density of 67.1 per square mile. On the most recent census form, 96.2% of the population reported only one race, with 2.3% of these reporting African-American. The population of this county is 22.2% Hispanic (of any race). The average household size is 2.50 persons compared to an average family size of 3.10 persons.

In 2010 accommodation and food services was the largest of 20 major sectors. It had an average wage per job of \$21,676. Per capita income declined by 4.0% between 1999 and 2009 (adjusted for inflation).

| People & Income Overview<br>(By Place of Residence)      | Value    | Rank in State     | Industry Overview (2010)<br>(By Place of Work)      | Value    | Rank in State     |
|--|----------|-------------------|---|----------|-------------------|
| Population (2011)  | 425,710  | <a href="#">2</a> | Covered Employment                                  | 183,892  | <a href="#">2</a> |
| Growth (%) since 2010 Census                             | 1.0%     | <a href="#">4</a> | Avg wage per job                                    | \$42,301 | <a href="#">9</a> |
| Households (2010)  | 163,445  | <a href="#">2</a> | Manufacturing - % all jobs in County                | 5.9%     | <a href="#">5</a> |
| Labor Force (persons) (2010)                             | 220,539  | <a href="#">2</a> | Avg wage per job                                    | \$51,898 | <a href="#">4</a> |
| Unemployment Rate (2010)                                 | 14.1     | <a href="#">7</a> | Transportation & Warehousing - % all jobs in County | 5.8%     | <a href="#">4</a> |
| Per Capita Personal Income (2009)                        | \$42,499 | <a href="#">4</a> | Avg wage per job                                    | \$41,501 | <a href="#">8</a> |
| Median Household Income (2010)                           | \$50,839 | <a href="#">8</a> | Health Care, Social Assist. - % all jobs in County  | 11.5%    | <a href="#">2</a> |
| Poverty Rate (2010)                                      | 15.3     | <a href="#">4</a> | Avg wage per job                                    | \$51,184 | <a href="#">3</a> |
| H.S. Diploma or More - % of Adults 25+ (2010 ACS 5yr)    | 86.4     | <a href="#">6</a> | Finance and Insurance - % all jobs in County        | 3.0%     | <a href="#">2</a> |
| Bachelor's Deg. or More - % of Adults 25+ (2010 ACS 5yr) | 26.7     | <a href="#">1</a> | Avg wage per job                                    | \$64,938 | <a href="#">1</a> |

| Population Over Time  | Number  | Rank in State     | Percent of State | State     |
|-----------------------|---------|-------------------|------------------|-----------|
| 2011                  | 425,710 | <a href="#">2</a> | 15.63%           | 2,723,322 |
| 2010                  | 421,407 | <a href="#">2</a> | 15.60%           | 2,700,551 |
| 2000                  | 339,486 | <a href="#">2</a> | 16.99%           | 1,998,257 |
| 1990                  | 254,667 | <a href="#">2</a> | 21.19%           | 1,201,675 |
| 1980                  | 193,623 | <a href="#">2</a> | 24.19%           | 800,508   |
| 2000 to 2010 % change | 24.1%   | <a href="#">5</a> |                  | 35.1%     |
| 1990 to 2010 % change | 65.5%   | <a href="#">6</a> |                  | 124.7%    |
| 1980 to 2010 % change | 117.6%  | <a href="#">7</a> |                  | 237.4%    |

Source: US Census Bureau

| Components of Population Change in 2010/2011 | Number | Rank in State     | Percent of State | State  |
|--|--------|-------------------|------------------|--------|
| Net Domestic Migration (chg 2010/2011)       | -26    | <a href="#">6</a> |                  | -8,008 |
| Net International Migration (chg 2010/2011)  | 1,089  | <a href="#">2</a> | 11.25%           | 9,679  |
| Natural Increase (births minus deaths)       | 2,343  | <a href="#">2</a> | 13.47%           | 17,399 |
| Births                                       | 5,448  | <a href="#">2</a> | 14.82%           | 36,772 |
| Deaths                                       | 3,105  | <a href="#">2</a> | 16.03%           | 19,373 |

Source: US Census Bureau

| <b>Population Estimates by Age in 2010</b> | Number  | Rank in State      | Pct Dist. in County | Pct Dist. in State |
|--|---------|--------------------|---------------------|--------------------|
| Preschool (0 to 4)                         | 27,998  | <a href="#">2</a>  | 6.6%                | 6.9%               |
| School Age (5 to 17)                       | 71,334  | <a href="#">2</a>  | 16.9%               | 17.7%              |
| College Age (18 to 24)                     | 44,733  | <a href="#">2</a>  | 10.6%               | 9.2%               |
| Young Adult (25 to 44)                     | 111,822 | <a href="#">2</a>  | 26.5%               | 28.5%              |
| Older Adult(45 to 64)                      | 114,641 | <a href="#">2</a>  | 27.2%               | 25.6%              |
| Older (65 plus)                            | 50,879  | <a href="#">2</a>  | 12.1%               | 12.0%              |
| Median Age                                 | 37.0    | <a href="#">14</a> |                     | Median Age = 36.3  |

Sources: US Census Bureau; Median age calculated by the IBRC.

| <b>Population Estimates by Race and Hispanic Origin in 2010</b> | Number  | Rank in State     | Pct Dist. in County | Pct Dist. in State |
|---|---------|-------------------|---------------------|--------------------|
| American Ind. or Alaskan Native Alone                           | 7,209   | <a href="#">2</a> | 1.7%                | 1.2%               |
| Asian Alone   | 21,790  | <a href="#">2</a> | 5.2%                | 7.2%               |
| Black Alone   | 9,814   | <a href="#">2</a> | 2.3%                | 8.1%               |
| Native Hawaiian and Other Pac. Isl. Alone                       | 2,542   | <a href="#">2</a> | 0.6%                | 0.6%               |
| White Alone   | 324,070 | <a href="#">2</a> | 76.9%               | 66.2%              |
| Two or More Race Groups   | 15,944  | <a href="#">2</a> | 3.8%                | 4.7%               |
| <b>Hispanic or Latino (can be of any race)</b>                  |         |                   |                     |                    |
| Non-Hispanic or Latino  | 327,683 | <a href="#">2</a> | 77.8%               | 73.5%              |
| Hispanic or Latino  | 93,724  | <a href="#">2</a> | 22.2%               | 26.5%              |

Source: US Census Bureau

| <b>Hispanic or Latino Population in 2010 (can be of any race)</b> | Number  | Rank in State     | Pct Dist. in County | Pct Dist. in State |
|---|---------|-------------------|---------------------|--------------------|
| Hispanic  | 93,724  | <a href="#">2</a> | 22.2%               | 26.5%              |
| Mexican   | 73,651  | <a href="#">2</a> | 17.5%               | 20.0%              |
| Cuban   | 547     | <a href="#">2</a> | 0.1%                | 0.8%               |
| Puerto Rican  | 1,746   | <a href="#">2</a> | 0.4%                | 0.8%               |
| Other   | 17,780  | <a href="#">2</a> | 4.2%                | 4.9%               |
| White, Not Hispanic (reporting white alone)                       | 278,213 | <a href="#">2</a> | 66.0%               | 54.1%              |

Source: US Census Bureau, American Community Survey, 5 Year Estimates

| <b>Households in 2010</b>     | Number  | Rank in State     | Pct All Hhlds in County | Pct All Hhlds in State |
|-------------------------------|---------|-------------------|-------------------------|------------------------|
| Total Households              | 163,445 | <a href="#">2</a> | 100.0%                  | 100.0%                 |
| Family Households             | 102,768 | <a href="#">2</a> | 62.9%                   | 65.3%                  |
| Married with Children         | 31,231  | <a href="#">2</a> | 19.1%                   | 19.6%                  |
| Married without Children      | 43,263  | <a href="#">2</a> | 26.5%                   | 26.4%                  |
| Single Parents                | 15,622  | <a href="#">2</a> | 9.6%                    | 10.4%                  |
| Other                         | 12,652  | <a href="#">2</a> | 7.7%                    | 8.9%                   |
| Non-family Households         | 60,677  | <a href="#">2</a> | 37.1%                   | 34.7%                  |
| Living Alone                  | 44,469  | <a href="#">2</a> | 27.2%                   | 25.7%                  |
| Average Household Size        | 2.50    | <a href="#">7</a> |                         |                        |
| Average Family Household Size | 3.10    | <a href="#">4</a> |                         |                        |

Source: US Census Bureau

| <b>Housing Units in 2010</b>         | Number  | Rank in State     | Pct All HU in County | Pct All HU in State |
|--------------------------------------|---------|-------------------|----------------------|---------------------|
| 2009 Housing Units (Census Estimate) | 180,761 | <a href="#">2</a> |                      |                     |

|                                  |         |                   |        |        |
|----------------------------------|---------|-------------------|--------|--------|
| Total Housing Units              | 184,841 | <a href="#">2</a> | 100.0% | 100.0% |
| Occupied                         | 163,445 | <a href="#">2</a> | 88.4%  | 85.7%  |
| Owner Occupied                   | 95,678  | <a href="#">2</a> | 51.8%  | 50.4%  |
| Renter Occupied                  | 67,767  | <a href="#">2</a> | 36.7%  | 35.3%  |
| Vacant                           | 21,396  | <a href="#">2</a> | 11.6%  | 14.3%  |
| For seasonal or recreational use | 5,025   | <a href="#">2</a> | 2.7%   | 2.8%   |

Source: US Census Bureau

| Residential Building Permits in 2010 | Units | Pct Dist. in County | Pct Dist. in State | Cost (\$000) |
|--------------------------------------|-------|---------------------|--------------------|--------------|
| Total Permits Filed                  | 600   | 100.0%              | 100.0%             | \$117,001    |
| Single Family                        | 466   | 77.7%               | 83.2%              | \$103,436    |
| Two Family                           | 0     | 0.0%                | 0.3%               | \$0          |
| Three & Four Family                  | 0     | 0.0%                | 2.2%               | \$0          |
| Five Families and More               | 134   | 22.3%               | 14.3%              | \$13,565     |

Source: US Census Bureau

| Median Income  | Number   | Rank in State      | Percent of State |
|--|----------|--------------------|------------------|
| Median household income in 2010                      | \$50,839 | <a href="#">8</a>  | 99.7%            |
| Median household income in 2000 (adj. for inflation) | \$62,594 | <a href="#">3</a>  | 110.6%           |
| 5-year percent change 2000 to 2010                   | -18.8%   | <a href="#">17</a> |                  |

Source: US Census Bureau

| Per Capita Personal Income                    | Number   | Rank in State      | Percent of State |
|---|----------|--------------------|------------------|
| Per capita income - 2009                      | \$42,499 | <a href="#">4</a>  | 112.8%           |
| Per capita income - 1999 (adj. for inflation) | \$44,260 | <a href="#">2</a>  | 115.9%           |
| Per capita income - 1989 (adj. for inflation) | \$36,591 | <a href="#">3</a>  | 110.4%           |
| Per capita income - 1979 (adj. for inflation) | \$36,329 | <a href="#">2</a>  | 115.6%           |
| 10-year % change                              | -4.0%    | <a href="#">16</a> |                  |
| 20-year % change                              | 16.1%    | <a href="#">8</a>  |                  |
| 30-year % change                              | 17.0%    | <a href="#">13</a> |                  |

Source: US Bureau of Economic Analysis

| Personal Income in 2009 (\$000)                        | Number       | 5-Year % Change (adj*) | Rank in % Change   |
|--|--------------|------------------------|--------------------|
| <b>Total Earnings by Place of Work</b>                 | \$11,666,388 | -5.9%                  | <a href="#">15</a> |
| Minus: Contributions for government social insurance   | \$1,208,730  | -3.8%                  | <a href="#">13</a> |
| Personal contributions for government social insurance | \$638,103    | 0.6%                   | <a href="#">14</a> |
| Employer contributions for government social insurance | \$570,627    | -8.4%                  | <a href="#">14</a> |
| Plus: Adjustment for residence                         | -\$90,066    | -67.3%                 | <a href="#">12</a> |
| Equals: <b>Net Earnings by Place of Residence</b>      | \$10,367,592 | -4.6%                  | <a href="#">15</a> |
| Plus: Dividends, rent, interest                        | \$4,840,097  | -1.2%                  | <a href="#">13</a> |
| Plus: Transfer payments                                | \$2,421,682  | 52.9%                  | <a href="#">5</a>  |
| Equals: <b>Personal Income by Place of Residence</b>   | \$17,629,371 | 1.6%                   | <a href="#">15</a> |

Source: US Bureau of Economic Analysis (\*adj = Adjusted for Inflation)

| Poverty Estimates                          | Number | Rank in State      | 5-Year % Change | Rank in % Change  |
|--|--------|--------------------|-----------------|-------------------|
| Poverty rate in 2010                       | 15.3   | <a href="#">4</a>  | --              | --                |
| In 2000                                    | 8.4    | <a href="#">14</a> | 82.1%           | <a href="#">1</a> |
| Poverty rate for children under 18 in 2010 | 20.4   | <a href="#">6</a>  | --              | --                |
| In 2000                                    | 11.9   | <a href="#">14</a> | 71.4%           | <a href="#">2</a> |

Source: US Census Bureau

| <b>Labor Force Annual Averages in 2010</b> | Number  | % of State | State     | Rank in State |
|--|---------|------------|-----------|---------------|
| Total Labor Force                          | 220,539 | 16.33%     | 1,350,309 | <u>2</u>      |
| 5-year % change                            | 5.7%    | -          | 9.9%      | <u>15</u>     |
| 10-year % change                           | 13.3%   | -          | 27.0%     | <u>10</u>     |
| Employed                                   | 189,350 | 16.47%     | 1,149,537 | <u>2</u>      |
| 5-year % change                            | -5.2%   | -          | -2.0%     | <u>16</u>     |
| 10-year % change                           | 1.0%    | -          | 13.2%     | <u>11</u>     |
| Unemployed                                 | 31,189  | 15.53%     | 200,772   | <u>2</u>      |
| 5-year % change                            | 246.6%  | -          | 265.6%    | <u>3</u>      |
| 10-year % change                           | 331.9%  | -          | 321.6%    | <u>3</u>      |
| Unemployment Rate                          | 14.1    | 94.63%     | 14.9      | <u>7</u>      |
| 5-year % change                            | 227.9%  | -          | 231.1%    | <u>2</u>      |
| 10-year % change                           | 281.1%  | -          | 231.1%    | <u>3</u>      |

Source: US Bureau of Labor Statistics

| <b>Educational Attainment: ACS 2005-2010</b> | Number  | Percent of Population 25+ | Rank of % in State | State % of Population 25+ |
|--|---------|---------------------------|--------------------|---------------------------|
| Total Population 25 and Older                | 270,427 | 100.0%                    |                    | 100.0%                    |
| Less Than 9th Grade                          | 14,036  | 5.2%                      | <u>9</u>           | 6.3%                      |
| 9th to 12th, No Diploma                      | 22,759  | 8.4%                      | <u>14</u>          | 9.4%                      |
| High School Graduate (incl. equiv.)          | 67,658  | 25.0%                     | <u>17</u>          | 29.7%                     |
| Some College, No Degree                      | 73,544  | 27.2%                     | <u>6</u>           | 25.5%                     |
| Associate Degree                             | 20,176  | 7.5%                      | <u>8</u>           | 7.3%                      |
| Bachelor's Degree                            | 46,097  | 17.0%                     | <u>1</u>           | 14.4%                     |
| Graduate, Professional or Doctorate Degree   | 26,157  | 9.7%                      | <u>2</u>           | 7.4%                      |

Source: US Census Bureau, American Community Survey, 2005-2009 5-Year Estimates

| <b>Educational Attainment: Census 2000</b> | Number  | Percent of Population 25+ | Rank of % in State | State % of Population 25+ |
|--|---------|---------------------------|--------------------|---------------------------|
| Total Population 25 and Older              | 221,837 | 100.0%                    |                    | 100.0%                    |
| Less Than 9th Grade                        | 12,562  | 5.7%                      | <u>7</u>           | 6.4%                      |
| 9th to 12th, No Diploma                    | 23,064  | 10.4%                     | <u>16</u>          | 12.9%                     |
| High School Graduate (incl. equiv.)        | 55,841  | 25.2%                     | <u>17</u>          | 29.3%                     |
| Some College, No Degree                    | 62,124  | 28.0%                     | <u>7</u>           | 27.0%                     |
| Associate Degree                           | 15,628  | 7.0%                      | <u>2</u>           | 6.2%                      |
| Bachelor's Degree                          | 35,108  | 15.8%                     | <u>1</u>           | 12.1%                     |
| Graduate or Professional Degree            | 17,510  | 7.9%                      | <u>1</u>           | 6.1%                      |

Source: US Census Bureau

| <b>Workers Living in County in 2000</b> | Number  | Rank in State | Pct Dist. in County | Rank of Pct Dist. |
|---|---------|---------------|---------------------|-------------------|
| Total                                   | 168,815 | <u>2</u>      | 100.0%              |                   |
| Working in County                       | 161,586 | <u>2</u>      | 95.7%               | <u>2</u>          |
| Working Elsewhere                       | 7,229   | <u>3</u>      | 4.3%                | <u>16</u>         |

Source: US Census Bureau (Includes only domestic commuting for workers over 16 years old.)

| <b>People Working in County in 2000</b> | Number  | Rank in State | Pct Dist. in County | Rank of Pct Dist. |
|---|---------|---------------|---------------------|-------------------|
| Total                                   | 175,530 | <u>2</u>      | 100.0%              |                   |
| Living in County                        | 161,586 | <u>2</u>      | 92.1%               | <u>4</u>          |
| Living Elsewhere                        | 13,944  | <u>2</u>      | 7.9%                | <u>14</u>         |

Source: US Census Bureau (Includes only domestic commuting for workers over 16 years old.)

| <b>Commuting Flows in 2000</b>                                  | Number | Rank in State | Pct Dist. |
|---|--------|---------------|-----------|
| Gross Flow (Living Elsewhere + Working Elsewhere)               | 21,173 | <u>2</u>      | 100%      |
| Net Flow (Living Elsewhere - Working Elsewhere)                 | 6,715  | <u>2</u>      |           |
| Largest Single Inflow : <a href="#">Carson City County, NV</a>  | 3,106  |               | 14.7%     |
| Largest Single Outflow : <a href="#">Carson City County, NV</a> | 2,653  |               | 12.5%     |

Source: US Census Bureau (Includes only domestic commuting for workers over 16 years old.)

| <b>Annual Covered Employment and Wages Over Time (NAICS)</b> | Establishments | Jobs    | Average Wage Per Job (*adj) | Rank in State | Pct of State Avg Wage |
|--|----------------|---------|-----------------------------|---------------|-----------------------|
| 2010   | 13,789         | 183,892 | \$42,301                    | <u>10</u>     | 99.5%                 |
| 2009   | 14,435         | 188,786 | \$42,941                    | <u>9</u>      | 98.8%                 |
| 2008   | 14,639         | 208,318 | \$42,735                    | <u>9</u>      | 98.2%                 |
| 2007   | 14,404         | 218,131 | \$43,475                    | <u>8</u>      | 98.1%                 |
| 2006   | 13,985         | 218,159 | \$42,793                    | <u>8</u>      | 98.7%                 |
| 2005   | 13,317         | 211,549 | \$42,952                    | <u>7</u>      | 99.2%                 |
| 2004   | 12,663         | 204,304 | \$43,012                    | <u>4</u>      | 100.4%                |
| 2003   | 11,816         | 195,811 | \$42,740                    | <u>5</u>      | 102.1%                |
| 2002   | 11,022         | 192,129 | \$42,113                    | <u>6</u>      | 102.2%                |
| 2001   | 10,645         | 193,571 | \$42,147                    | <u>5</u>      | 103.3%                |
| 2000   | 10,880         | 189,089 | \$41,480                    | <u>5</u>      | 101.5%                |
| 10-Year Change   | 2,909          | -5,197  | \$821                       |               |                       |
| 10-Year Percent Change                                       | 26.7%          | -2.7%   | 2.0%                        |               |                       |

Source: US Bureau of Labor Statistics(BLS)

\*adj = Adjusted for Inflation; D = Non-Discloseable Data; N/A = Not Available; Note: Average wage may not match published numbers due to rounding.

| <b>Annual Industry Distribution of Jobs and Avg. Wage in 2010 (NAICS)</b> | Establishments | Jobs    | Pct Dist. in County | Annual Average Wage Per Job | Rank in State |
|---|----------------|---------|---------------------|-----------------------------|---------------|
| Total Covered Employment and Wages  | 13,789         | 183,892 | 100.0%              | \$42,301                    | <u>9</u>      |
| Private   | 13,589         | 156,757 | 85.2%               | \$40,561                    | <u>10</u>     |
| Agri., forestry, hunting  | 26             | 140     | 0.1%                | \$34,971                    | <u>1</u>      |
| Mining  | 63             | 248     | 0.1%                | \$160,395                   | <u>1</u>      |
| Construction  | 1,398          | 8,956   | 4.9%                | \$48,093                    | <u>6</u>      |
| Manufacturing   | 475            | 10,810  | 5.9%                | \$51,898                    | <u>4</u>      |
| Wholesale trade   | 956            | 8,871   | 4.8%                | \$56,638                    | <u>5</u>      |
| Retail trade  | 1,415          | 21,376  | 11.6%               | \$27,157                    | <u>4</u>      |
| Transportation, warehousing   | 511            | 10,659  | 5.8%                | \$41,501                    | <u>8</u>      |
| Utilities   | 25             | 762     | 0.4%                | \$83,275                    | <u>5</u>      |
| Information   | 207            | 2,349   | 1.3%                | \$53,989                    | <u>3</u>      |
| Finance and Insurance   | 844            | 5,512   | 3.0%                | \$64,938                    | <u>1</u>      |
| Real Estate, rental, leasing  | 674            | 3,335   | 1.8%                | \$32,981                    | <u>4</u>      |
| Professional, technical services  | 1,982          | 9,342   | 5.1%                | \$65,000                    | <u>5</u>      |
| Mgmt. of companies, enterprises   | 375            | 3,304   | 1.8%                | \$95,664                    | <u>6</u>      |
| Administrative, waste services  | 946            | 11,487  | 6.2%                | \$26,612                    | <u>7</u>      |
| Educational services  | 179            | 1,817   | 1.0%                | \$34,215                    | <u>3</u>      |
| Health care, social assistance  | 1,288          | 21,214  | 11.5%               | \$51,184                    | <u>3</u>      |
| Arts, entertainment, recreation   | 230            | 5,622   | 3.1%                | \$22,378                    | <u>5</u>      |

|                                    |     |        |       |          |                   |
|------------------------------------|-----|--------|-------|----------|-------------------|
| Accommodation and food services    | 992 | 28,244 | 15.4% | \$21,676 | <a href="#">4</a> |
| Other services, exc. public admin. | 979 | 5,248  | 2.9%  | \$33,909 | <a href="#">5</a> |
| Public administration              | 137 | 9,363  | 5.1%  | \$59,446 | <a href="#">4</a> |

Source: US Bureau of Labor Statistics(BLS)

D = Not shown to avoid disclosure of confidential information.

N/A = This item is not available.

Note: Average wage may not match published numbers due to rounding.

| BEA Major Sectors (NAICS) in 2009 (by place of work) |                                      | Earnings (\$000) | Avg Earnings Per Job | Rank in State      | Jobs    | Pct Dist. in County | Pct Dist. in State |
|--|--------------------------------------|------------------|----------------------|--------------------|---------|---------------------|--------------------|
|  | Total by place of work               | \$11,666,388     | \$45,288             | <a href="#">6</a>  | 257,604 | 100.0%              | 100.0%             |
|  | Wage and Salary                      | \$8,378,552      | \$42,652             | <a href="#">8</a>  | 196,440 | 76.3%               | 77.8%              |
|  | Proprietors                          | \$1,288,777      | \$21,071             | <a href="#">3</a>  | 61,164  | 23.7%               | 22.2%              |
|  | Farm                                 | -\$496           | -\$1,429             | <a href="#">11</a> | 347     | 0.1%                | 0.2%               |
|  | Nonfarm                              | \$1,289,273      | \$21,199             | <a href="#">2</a>  | 60,817  | 23.6%               | 22.1%              |
|  | Farm                                 | \$3,844          | \$9,002              | <a href="#">14</a> | 427     | 0.2%                | 0.3%               |
|  | Nonfarm                              | \$11,662,544     | \$45,348             | <a href="#">7</a>  | 257,177 | 99.8%               | 99.7%              |
|  | Private                              | \$9,605,441      | \$42,066             | <a href="#">7</a>  | 228,342 | 88.6%               | 88.6%              |
|  | Forestry, fishing, etc. *            | \$3,015          | \$12,407             | <a href="#">3</a>  | 243     | 0.1%                | 0.1%               |
| 21   | Mining                               | \$35,504         | \$21,362             | <a href="#">9</a>  | 1,662   | 0.6%                | 1.1%               |
| 22   | Utilities                            | \$71,328         | \$126,468            | <a href="#">1</a>  | 564     | 0.2%                | 0.3%               |
| 23   | Construction                         | \$923,125        | \$63,911             | <a href="#">2</a>  | 14,444  | 5.6%                | 6.5%               |
| 31-33  | Manufacturing                        | \$821,631        | \$67,819             | <a href="#">1</a>  | 12,115  | 4.7%                | 2.9%               |
| 42   | Wholesale Trade                      | \$670,337        | \$63,287             | <a href="#">5</a>  | 10,592  | 4.1%                | 2.6%               |
| 44-45  | Retail Trade                         | \$795,447        | \$29,512             | <a href="#">4</a>  | 26,953  | 10.5%               | 10.1%              |
| 48-49  | Trans. and warehousing               | \$583,312        | \$50,182             | <a href="#">7</a>  | 11,624  | 4.5%                | 3.5%               |
| 51   | Information                          | \$181,172        | \$52,636             | <a href="#">3</a>  | 3,442   | 1.3%                | 1.2%               |
| 52   | Finance and insurance                | \$839,939        | \$48,456             | <a href="#">2</a>  | 17,334  | 6.7%                | 7.0%               |
| 53   | Real Estate and rental and leasing   | \$204,651        | \$11,992             | <a href="#">5</a>  | 17,066  | 6.6%                | 6.3%               |
| 54   | Professional, technical services     | \$939,805        | \$56,782             | <a href="#">3</a>  | 16,551  | 6.4%                | 5.3%               |
| 55   | Management of companies, enterprises | \$305,144        | \$77,625             | <a href="#">5</a>  | 3,931   | 1.5%                | 1.3%               |
| 56   | Administrative and waste services    | \$403,059        | \$26,122             | <a href="#">5</a>  | 15,430  | 6.0%                | 6.0%               |
| 61   | Educational services                 | \$79,855         | \$27,843             | <a href="#">3</a>  | 2,868   | 1.1%                | 0.9%               |
| 62   | Health care, social assistance       | \$1,343,537      | \$57,635             | <a href="#">3</a>  | 23,311  | 9.0%                | 6.9%               |
| 71   | Arts, entertainment, and recreation  | \$154,625        | \$18,282             | <a href="#">6</a>  | 8,458   | 3.3%                | 3.2%               |
| 72   | Accommodation and food services      | \$859,891        | \$28,691             | <a href="#">4</a>  | 29,971  | 11.6%               | 19.0%              |
| 81   | Other services, exc. public admin.   | \$390,064        | \$33,104             | <a href="#">5</a>  | 11,783  | 4.6%                | 4.3%               |
| NA   | Gov. and gov. enterprises            | \$2,057,103      | \$71,340             | <a href="#">3</a>  | 28,835  | 11.2%               | 11.1%              |

Source: US Bureau of Economic Analysis(BEA)

D = Not shown to avoid disclosure of confidential information, but the estimates for this item are included in the totals.

L = Less than 10 jobs, but the estimates for this item are included in the totals.

N/A = Not available or not applicable.

\* = "Other" consists of the number of jobs held by U.S. residents employed by international organizations and foreign embassies and consulates in the United States.

[Home](#) | [About STATS America](#) | [Contact Us](#) | [Report a Problem](#) |



STATS America is a service of the Indiana Business Research Center at Indiana University's Kelley School of Business: [www.ibrc.indiana.edu](http://www.ibrc.indiana.edu). It was developed with support from the U.S. Department of Commerce, Economic Development Administration and Indiana University.

**Updated: April 06, 2012 at 12:27**



Market at a Glance



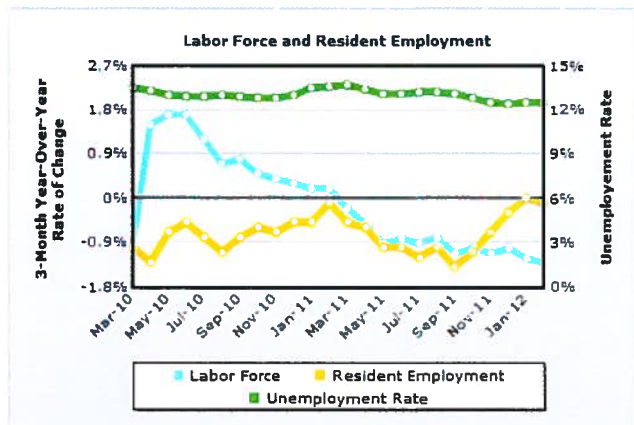
Washoe County, NV

Prepared by: PD&R / Economic & Market Analysis Division (EMAD)  
Pacific Regional Office

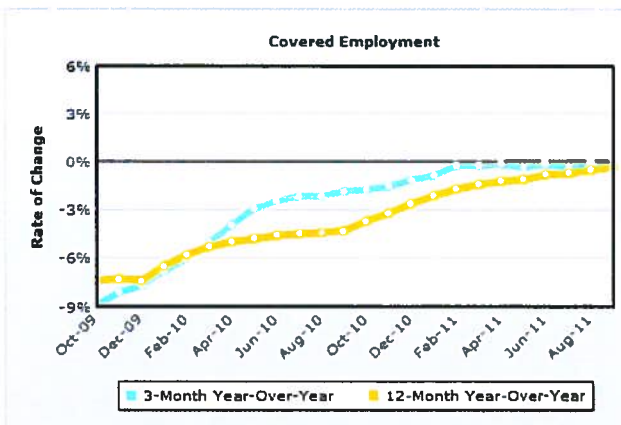
Created on: May 3, 2012



ECONOMIC CONDITIONS



Data Source: U.S. Bureau of Labor Statistics



Data Source: U.S. Bureau of Labor Statistics

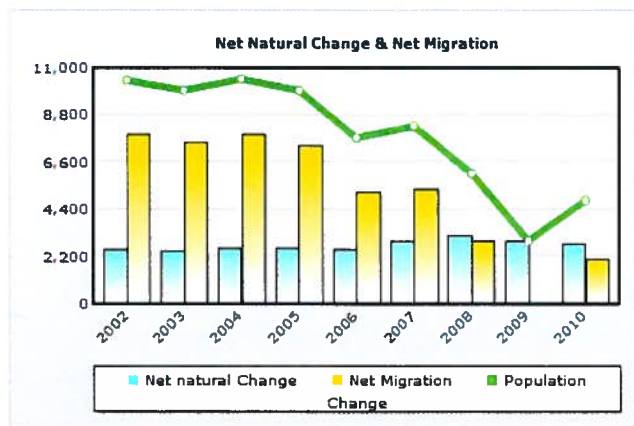
|                       | 3-Month Average |                |                | 3-Month Year-Over-Year Change    |         |                                  |         |
|-----------------------|-----------------|----------------|----------------|----------------------------------|---------|----------------------------------|---------|
|                       | February 2010   | February 2011  | February 2012  | February 2010 to February 2011   |         | February 2011 to February 2012   |         |
|                       |                 |                |                | Number                           | Percent | Number                           | Percent |
| Labor Force           | 224,668         | 225,169        | 222,156        | 501                              | 0.2     | -3,013                           | -1.3    |
| Resident Employment   | 194,682         | 194,568        | 194,429        | -114                             | -0.1    | -139                             | -0.1    |
| Unemployment Rate (%) | 13.3            | 13.6           | 12.5           | n/a                              | n/a     | n/a                              | n/a     |
|                       | September 2009  | September 2010 | September 2011 | September 2009 to September 2010 |         | September 2010 to September 2011 |         |
| Covered Employment    | 188,168         | 184,708        | 184,922        | -3,460                           | -1.8    | 214                              | 0.1     |

Data Source: U.S. Bureau of Labor Statistics

POPULATION & HOUSEHOLDS

|                         | Decennial Census |            |                                    |         | ACS & Population Estimates Program |           |           |              |         |              |         |
|-------------------------|------------------|------------|------------------------------------|---------|------------------------------------|-----------|-----------|--------------|---------|--------------|---------|
|                         | April 2000       | April 2010 | Average Annual Change 2000 to 2010 |         | July 2008                          | July 2009 | July 2010 | 2008 to 2009 |         | 2009 to 2010 |         |
|                         |                  |            | Number                             | Percent |                                    |           |           | Number       | Percent | Number       | Percent |
| Population <sup>1</sup> | 339,486          | 421,407    | 8,192                              | 2.4     | 414,793                            | 417,722   | 422,528   | 2,929        | 0.7     | 4,806        | 1.2     |
| Households <sup>2</sup> | 132,084          | 163,445    | 3,136                              | 2.4     | 155,857                            | 157,900   | 163,220   | 2,043        | 1.3     | 5,320        | 3.4     |

Data Source: 1 - 2000 Census; 2010 Census; U.S. Census Bureau Population Estimates  
2 - 2000 Census; 2010 Census; 2008, 2009 and 2010 American Community Surveys (1 - Year)

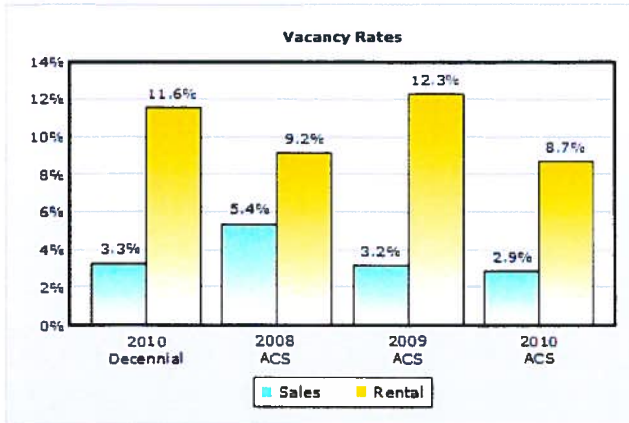


Data Source: U.S. Census Bureau Population Estimates

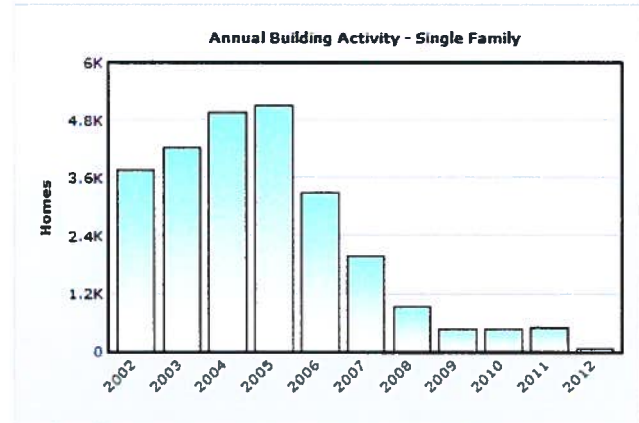
Notes: 1 - Values in chart reflect July year-to-year changes  
2 - Net Migration includes residual population change



HOUSING MARKET CONDITIONS



Data Source: 2010 Census, 2008, 2009 and 2010 American Community Surveys (1 - Year)

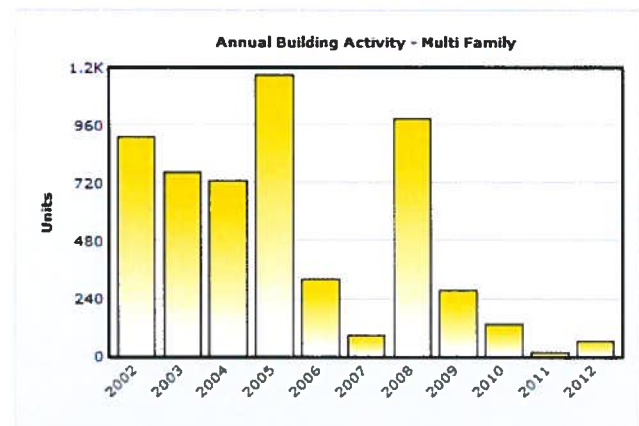


Data Source: U.S. Census Bureau, Building Permits Survey, adjustments by analyst

Note: Data for 2011 and 2012 is preliminary, through February 2012

|                            | 2010 Decennial | 2008 ACS | 2009 ACS | 2010 ACS |
|----------------------------|----------------|----------|----------|----------|
| <b>Total Housing Units</b> | 184,841        | 179,243  | 180,767  | 184,957  |
| <b>Occupied</b>            | 163,445        | 155,857  | 157,900  | 163,220  |
| <b>Owners</b>              | 95,678         | 93,290   | 96,083   | 93,903   |
| <b>% Owners</b>            | 58.5           | 59.9     | 60.9     | 57.5     |
| <b>Renters</b>             | 67,767         | 62,567   | 61,817   | 69,317   |
| <b>% Renters</b>           | 41.5           | 40.1     | 39.1     | 42.5     |
| <b>Total Vacant</b>        | 21,396         | 23,386   | 22,867   | 21,737   |
| <b>Available for Sale</b>  | 3,251          | 5,348    | 3,198    | 2,769    |
| <b>Available for Rent</b>  | 8,916          | 6,368    | 8,669    | 6,595    |
| <b>Other Vacant</b>        | 9,229          | 11,670   | 11,000   | 12,373   |

Data Source: 2010 Census, 2008, 2009 and 2010 American Community Surveys (1 - Year)



Data Source: U.S. Census Bureau, Building Permits Survey, adjustments by analyst

Note: Data for 2011 and 2012 is preliminary, through February 2012

|                                       | Washoe<br>County | Error<br>Margin | National<br>Benchmark* | Nevada  | Rank<br>(of 16) |
|---------------------------------------|------------------|-----------------|------------------------|---------|-----------------|
| <b>Health Outcomes</b>                |                  |                 |                        |         | <b>4</b>        |
| <b>Mortality</b>                      |                  |                 |                        |         | <b>3</b>        |
| Premature death                       | 7,377            | 7,089-7,666     | 5,466                  | 7,927   |                 |
| <b>Morbidity</b>                      |                  |                 |                        |         | <b>9</b>        |
| Poor or fair health                   | 15%              | 15-16%          | 10%                    | 18%     |                 |
| Poor physical health days             | 3.5              | 3.3-3.7         | 2.6                    | 3.7     |                 |
| Poor mental health days               | 3.6              | 3.4-3.8         | 2.3                    | 3.7     |                 |
| Low birthweight                       | 8.4%             | 8.1-8.6%        | 6.0%                   | 8.1%    |                 |
| <b>Health Factors</b>                 |                  |                 |                        |         | <b>5</b>        |
| <b>Health Behaviors</b>               |                  |                 |                        |         | <b>3</b>        |
| Adult smoking                         | 20%              | 19-21%          | 14%                    | 22%     |                 |
| Adult obesity                         | 23%              | 21-24%          | 25%                    | 26%     |                 |
| Physical inactivity                   | 17%              | 16-19%          | 21%                    | 24%     |                 |
| Excessive drinking                    | 21%              | 20-23%          | 8%                     | 19%     |                 |
| Motor vehicle crash death rate        | 14               | 13-16           | 12                     | 17      |                 |
| Sexually transmitted infections       | 304              |                 | 84                     | 386     |                 |
| Teen birth rate                       | 48               | 46-49           | 22                     | 53      |                 |
| <b>Clinical Care</b>                  |                  |                 |                        |         | <b>3</b>        |
| Uninsured                             | 24%              | 22-25%          | 11%                    | 25%     |                 |
| Primary care physicians               | 791:1            |                 | 631:1                  | 1,153:1 |                 |
| Preventable hospital stays            | 47               | 45-49           | 49                     | 59      |                 |
| Diabetic screening                    | 75%              | 72-78%          | 89%                    | 76%     |                 |
| Mammography screening                 | 65%              | 62-68%          | 74%                    | 60%     |                 |
| <b>Social &amp; Economic Factors</b>  |                  |                 |                        |         | <b>9</b>        |
| High school graduation                | 89%              |                 |                        | 70%     |                 |
| Some college                          | 60%              | 58-62%          | 68%                    | 54%     |                 |
| Unemployment                          | 14.1%            |                 | 5.4%                   | 14.9%   |                 |
| Children in poverty                   | 20%              | 17-23%          | 13%                    | 21%     |                 |
| Inadequate social support             | 22%              | 21-23%          | 14%                    | 23%     |                 |
| Children in single-parent households  | 32%              | 30-34%          | 20%                    | 34%     |                 |
| Violent crime rate                    | 525              |                 | 73                     | 728     |                 |
| <b>Physical Environment</b>           |                  |                 |                        |         | <b>13</b>       |
| Air pollution-particulate matter days | 1                |                 | 0                      | 1       |                 |
| Air pollution-ozone days              | 3                |                 | 0                      | 24      |                 |
| Access to recreational facilities     | 10               |                 | 16                     | 7       |                 |
| Limited access to healthy foods       | 6%               |                 | 0%                     | 4%      |                 |
| Fast food restaurants                 | 53%              |                 | 25%                    | 56%     |                 |

\* 90th percentile, i.e., only 10% are better

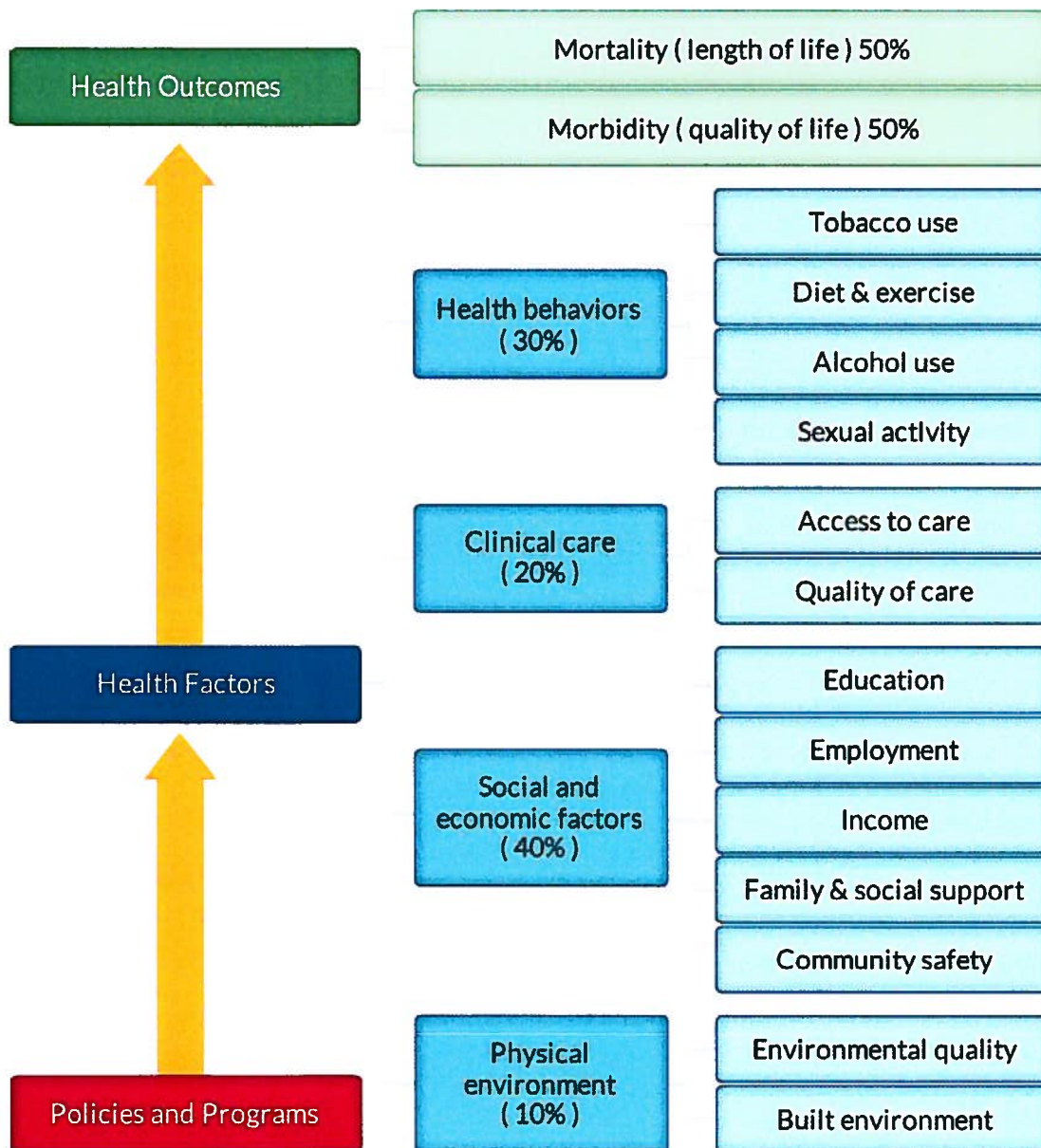
2012

Note: Blank values reflect unreliable or missing data

## County Health Rankings

The 2012 *County Health Rankings* report ranks Nevada counties according to their summary measures of **health outcomes** and **health factors**. Counties also receive a rank for mortality, morbidity, health behaviors, clinical care, social and economic factors, and the physical environment. The figure below depicts the structure of the *Rankings* model; those having high ranks (e.g., 1 or 2) are estimated to be the “healthiest.”

Our summary **health outcomes** rankings are based on an equal weighting of mortality and morbidity measures. The summary **health factors** rankings are based on weighted scores of four types of factors: behavioral, clinical, social and economic, and environmental. The weights for the factors (shown in parentheses in the figure) are based upon a review of the literature and expert input, but represent just one way of combining these factors.

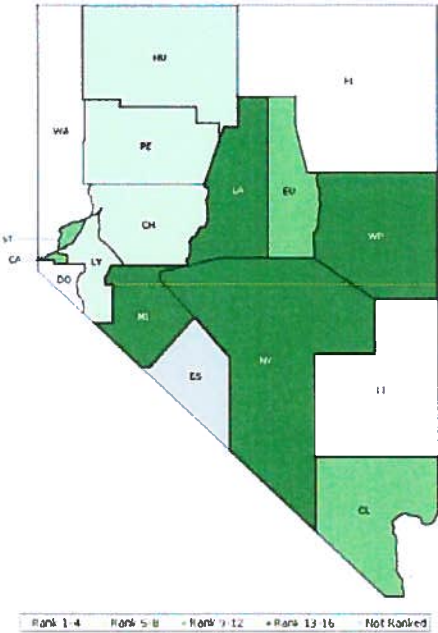


County Health Rankings model ©2012 UWPHI

The maps on this page and the next display Nevada’s counties divided into groups by health rank. Maps help locate the healthiest and least healthy counties in the state. The lighter colors indicate better

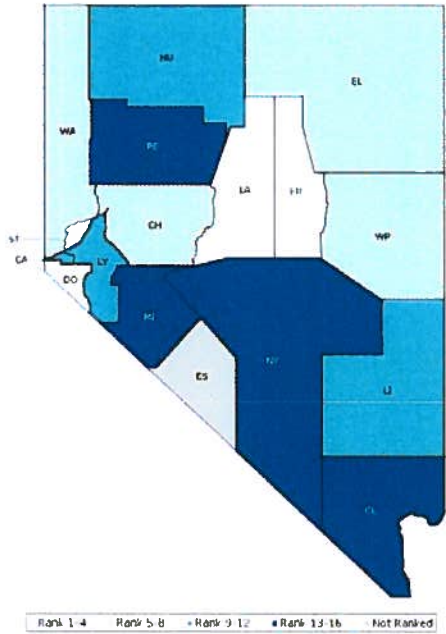
performance in the respective summary rankings. The green map shows the distribution of summary health outcomes. The blue displays the distribution of the summary rank for health factors.

**HEALTH OUTCOMES**



| County      | Rank | County    | Rank | County   | Rank | County     | Rank |
|-------------|------|-----------|------|----------|------|------------|------|
| Carson City | 12   | Esmeralda | NR   | Lyon     | 5    | Washoe     | 4    |
| Churchill   | 7    | Eureka    | 11   | Mineral  | 16   | White Pine | 13   |
| Clark       | 10   | Humboldt  | 8    | Nye      | 15   |            |      |
| Douglas     | 1    | Lander    | 14   | Pershing | 6    |            |      |
| Elko        | 2    | Lincoln   | 3    | Storey   | 9    |            |      |

### HEALTH FACTORS



| County      | Rank | County    | Rank | County   | Rank | County     | Rank |
|-------------|------|-----------|------|----------|------|------------|------|
| Carson City | 9    | Esmeralda | NR   | Lyon     | 12   | Washoe     | 5    |
| Churchill   | 8    | Eureka    | 3    | Mineral  | 16   | White Pine | 6    |
| Clark       | 13   | Humboldt  | 11   | Nye      | 15   |            |      |
| Douglas     | 1    | Lander    | 2    | Pershing | 14   |            |      |
| Elko        | 7    | Lincoln   | 10   | Storey   | 4    |            |      |

## Summary Health Outcomes & Health Factors Rankings

Counties receive two summary ranks:

- Health Outcomes
- Health Factors

Health outcomes represent how healthy a county is while health factors represent what influences the health of the county.

Each of these ranks represents a weighted summary of a number of measures.

| Rank | Health Outcomes | Rank | Health Factors |
|------|-----------------|------|----------------|
| 1    | Douglas         | 1    | Douglas        |
| 2    | Elko            | 2    | Lander         |
| 3    | Lincoln         | 3    | Eureka         |
| 4    | Washoe          | 4    | Storey         |
| 5    | Lyon            | 5    | Washoe         |
| 6    | Pershing        | 6    | White Pine     |
| 7    | Churchill       | 7    | Elko           |
| 8    | Humboldt        | 8    | Churchill      |
| 9    | Storey          | 9    | Carson City    |
| 10   | Clark           | 10   | Lincoln        |
| 11   | Eureka          | 11   | Humboldt       |
| 12   | Carson City     | 12   | Lyon           |
| 13   | White Pine      | 13   | Clark          |
| 14   | Lander          | 14   | Pershing       |
| 15   | Nye             | 15   | Nye            |
| 16   | Mineral         | 16   | Mineral        |

**Not Ranked:** Esmeralda

## 2012 County Health Rankings: Measures, Data Sources, and Years of Data

|  | Measure                                      | Data Source  | Years of Data |
|--|--|--|---------------|
| <b>HEALTH OUTCOMES</b>                   |  |  |               |
| <b>Mortality</b>                         | Premature death                              | National Center for Health Statistics  | 2006-2008     |
| <b>Morbidity</b>                         | Poor or fair health                          | Behavioral Risk Factor Surveillance System                                       | 2004-2010     |
|  | Poor physical health days                    | Behavioral Risk Factor Surveillance System                                       | 2004-2010     |
|  | Poor mental health days                      | Behavioral Risk Factor Surveillance System                                       | 2004-2010     |
|  | Low birthweight                              | National Center for Health Statistics  | 2002-2008     |
| <b>HEALTH FACTORS</b>                    |  |  |               |
| <b>HEALTH BEHAVIORS</b>                  |  |  |               |
| <b>Tobacco Use</b>                       | Adult smoking                                | Behavioral Risk Factor Surveillance System                                       | 2004-2010     |
| <b>Diet and Exercise</b>                 | Adult obesity                                | National Center for Chronic Disease Prevention and Health Promotion              | 2009          |
|  | Physical inactivity                          | National Center for Chronic Disease Prevention and Health Promotion              | 2009          |
| <b>Alcohol Use</b>                       | Excessive drinking                           | Behavioral Risk Factor Surveillance System                                       | 2004-2010     |
|  | Motor vehicle crash death rate               | National Center for Health Statistics  | 2002-2008     |
| <b>Sexual Activity</b>                   | Sexually transmitted infections              | National Center for Hepatitis, HIV, STD and TB Prevention                        | 2009          |
|  | Teen birth rate                              | National Center for Health Statistics  | 2002-2008     |
| <b>CLINICAL CARE</b>                     |  |  |               |
| <b>Access to Care</b>                    | Uninsured                                    | Small Area Health Insurance Estimates  | 2009          |
|  | Primary care physicians                      | Health Resources & Services Administration                                       | 2009          |
| <b>Quality of Care</b>                   | Preventable hospital stays                   | Medicare/Dartmouth Institute   | 2009          |
|  | Diabetic screening                           | Medicare/Dartmouth Institute   | 2009          |
|  | Mammography screening                        | Medicare/Dartmouth Institute   | 2009          |
| <b>SOCIAL AND ECONOMIC FACTORS</b>       |  |  |               |
| <b>Education</b>                         | High school graduation                       | National Center for Education Statistics and state-specific sources <sup>1</sup> | 2008-2010     |
|  | Some college                                 | American Community Survey  | 2006-2010     |
| <b>Employment</b>                        | Unemployment                                 | Bureau of Labor Statistics   | 2010          |
| <b>Income</b>                            | Children in poverty                          | Small Area Income and Poverty Estimates  | 2010          |
| <b>Family and Social Support</b>         | Inadequate social support                    | Behavioral Risk Factor Surveillance System                                       | 2006-2010     |
|  | Children in single-parent households         | American Community Survey  | 2006-2010     |
| <b>Community Safety</b>                  | Violent crime rate <sup>2</sup>              | Federal Bureau of Investigation  | 2007-2009     |
| <b>PHYSICAL ENVIRONMENT</b>              |  |  |               |
| <b>Environmental Quality<sup>3</sup></b> | Air pollution-particulate matter days        | U.S. Environmental Protection Agency   | 2007          |
|  | Air pollution-ozone days                     | U.S. Environmental Protection Agency   | 2007          |
| <b>Built Environment</b>                 | Access to recreational facilities            | Census County Business Patterns  | 2009          |
|  | Limited access to healthy foods <sup>4</sup> | U.S. Department of Agriculture   | 2006          |
|  | Fast food restaurants                        | Census County Business Patterns  | 2009          |

<sup>1</sup> NCES used for AK, AL, AR, CA, CT, FL, HI, ID, KY, MT, ND, NJ, OK, SD and TN

<sup>2</sup> State data source for IL.

<sup>3</sup> Not available for AK and HI.

<sup>4</sup> Access to Healthy Foods (2009) from Census Zip Code Business Patterns for AK and HI.