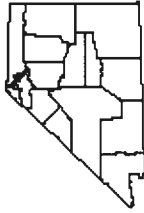


Storey County, NV in Profile

Part of: Reno-Sparks NV, Metropolitan Area
 Part of: Reno-Sparks-Fernley NV, Combined Statistical Area



Storey County is one of 17 counties and county equivalent cities in Nevada. It has 263.5 sq. miles in land area and a population density of 14.8 per square mile. On the most recent census form, 97.8% of the population reported only one race, with 1.0% of these reporting African-American. The population of this county is 5.7% Hispanic (of any race). The average household size is 2.30 persons compared to an average family size of 2.80 persons.

In 2010 transportation and warehousing was the largest of 20 major sectors. It had an average wage per job of \$39,203. Per capita income declined by 2.0% between 1999 and 2009 (adjusted for inflation).

People & Income Overview (By Place of Residence)	Value	Rank in State	Industry Overview (2010) (By Place of Work)	Value	Rank in State
Population (2011)	3,896	15	Covered Employment	2,811	13
Growth (%) since 2010 Census	-2.8%	16	Avg wage per job	\$44,608	5
Households (2010)	1,742	15	Manufacturing - % all jobs in County	13.4%	2
Labor Force (persons) (2010)	2,456	13	Avg wage per job	\$55,429	2
Unemployment Rate (2010)	14.5	6	Transportation & Warehousing - % all jobs in County	46.2%	1
Per Capita Personal Income (2009)	\$32,245	13	Avg wage per job	\$39,203	12
Median Household Income (2010)	\$57,763	5	Health Care, Social Assist. - % all jobs in County	D	N/A
Poverty Rate (2010)	8.7	16	Avg wage per job	D	N/A
H.S. Diploma or More - % of Adults 25+ (2010 ACS 5yr)	91.8	1	Finance and Insurance - % all jobs in County	D	N/A
Bachelor's Deg. or More - % of Adults 25+ (2010 ACS 5yr)	13.9	10	Avg wage per job	D	N/A

Population Over Time	Number	Rank in State	Percent of State	State
2011	3,896	15	0.14%	2,723,322
2010	4,010	15	0.15%	2,700,551
2000	3,399	15	0.17%	1,998,257
1990	2,526	15	0.21%	1,201,675
1980	1,503	15	0.19%	800,508
2000 to 2010 % change	18.0%	8		35.1%
1990 to 2010 % change	58.7%	6		124.7%
1980 to 2010 % change	166.8%	5		237.4%

Source: US Census Bureau

Components of Population Change in 2010/2011	Number	Rank in State	Percent of State	State
Net Domestic Migration (chg 2010/2011)	-107	12		-8,008
Net International Migration (chg 2010/2011)	-1	17	-0.01%	9,679
Natural Increase (births minus deaths)	8	11	0.05%	17,399
Births	25	15	0.07%	36,772
Deaths	17	15	0.09%	19,373

Source: US Census Bureau

Population Estimates by Age in 2010	Number	Rank in State	Pct Dist. in County	Pct Dist. in State
Preschool (0 to 4)	174	15	4.3%	6.9%
School Age (5 to 17)	527	15	13.1%	17.7%
College Age (18 to 24)	210	15	5.2%	9.2%
Young Adult (25 to 44)	699	15	17.4%	28.5%
Older Adult(45 to 64)	1,662	12	41.4%	25.6%
Older (65 plus)	738	14	18.4%	12.0%
Median Age	50.5	2		Median Age = 36.3

Sources: US Census Bureau; Median age calculated by the IBRC.

Population Estimates by Race and Hispanic Origin in 2010	Number	Rank in State	Pct Dist. in County	Pct Dist. in State
American Ind. or Alaskan Native Alone	64	14	1.6%	1.2%
Asian Alone	66	12	1.6%	7.2%
Black Alone	40	14	1.0%	8.1%
Native Hawaiian and Other Pac. Isl. Alone	15	10	0.4%	0.6%
White Alone	3,693	14	92.1%	66.2%
Two or More Race Groups	87	15	2.2%	4.7%
Hispanic or Latino (can be of any race)				
Non-Hispanic or Latino	3,782	15	94.3%	73.5%
Hispanic or Latino	228	16	5.7%	26.5%

Source: US Census Bureau

Hispanic or Latino Population in 2010 (can be of any race)	Number	Rank in State	Pct Dist. in County	Pct Dist. in State
Hispanic	228	16	5.7%	26.5%
Mexican	152	15	3.8%	20.0%
Cuban	3	13	0.1%	0.8%
Puerto Rican	11	12	0.3%	0.8%
Other	62	16	1.5%	4.9%
White, Not Hispanic (reporting white alone)	3,532	14	88.1%	54.1%

Source: US Census Bureau, American Community Survey, 5 Year Estimates

Households in 2010	Number	Rank in State	Pct All Hhlds in County	Pct All Hhlds in State
Total Households	1,742	15	100.0%	100.0%
Family Households	1,141	15	65.5%	65.3%
Married with Children	245	14	14.1%	19.6%
Married without Children	688	11	39.5%	26.4%
Single Parents	101	15	5.8%	10.4%
Other	107	15	6.1%	8.9%
Non-family Households	601	15	34.5%	34.7%
Living Alone	453	15	26.0%	25.7%
Average Household Size	2.30	15		
Average Family Household Size	2.80	14		

Source: US Census Bureau/font>

Housing Units in 2010	Number	Rank in State	Pct All HU in County	Pct All HU in State
2009 Housing Units (Census Estimate)	1,855	15		

Total Housing Units	1,990	15	100.0%	100.0%
Occupied	1,742	15	87.5%	85.7%
Owner Occupied	1,455	13	73.1%	50.4%
Renter Occupied	287	15	14.4%	35.3%
Vacant	248	16	12.5%	14.3%
For seasonal or recreational use	62	16	3.1%	2.8%

Source: US Census Bureau

Residential Building Permits in 2010	Units	Pct Dist. in County	Pct Dist. in State	Cost (\$000)
Total Permits Filed	6	100.0%	100.0%	\$1,005
Single Family	6	100.0%	83.2%	\$1,005
Two Family	0	0.0%	0.3%	\$0
Three & Four Family	0	0.0%	2.2%	\$0
Five Families and More	0	0.0%	14.3%	\$0

Source: US Census Bureau

Median Income	Number	Rank in State	Percent of State
Median household income in 2010	\$57,763	5	113.3%
Median household income in 2000 (adj. for inflation)	\$59,391	6	104.9%
5-year percent change 2000 to 2010	-2.7%	6	

Source: US Census Bureau

Per Capita Personal Income	Number	Rank in State	Percent of State
Per capita income - 2009	\$32,245	13	85.6%
Per capita income - 1999 (adj. for inflation)	\$32,893	5	86.1%
Per capita income - 1989 (adj. for inflation)	\$28,969	12	87.4%
Per capita income - 1979 (adj. for inflation)	\$32,399	4	103.1%
10-year % change	-2.0%	15	
20-year % change	11.3%	11	
30-year % change	-0.5%	16	

Source: US Bureau of Economic Analysis

Personal Income in 2009 (\$000)	Number	5-Year % Change (adj*)	Rank in % Change
Total Earnings by Place of Work	\$153,446	134.4%	1
Minus: Contributions for government social insurance	\$16,970	167.5%	1
Personal contributions for government social insurance	\$8,043	155.8%	1
Employer contributions for government social insurance	\$8,927	179.0%	1
Plus: Adjustment for residence	-\$50,281	-261.1%	16
Equals: Net Earnings by Place of Residence	\$86,195	-4.6%	15
Plus: Dividends, rent, interest	\$34,111	3.6%	10
Plus: Transfer payments	\$22,894	100.1%	1
Equals: Personal Income by Place of Residence	\$143,200	6.3%	12

Source: US Bureau of Economic Analysis (*adj = Adjusted for Inflation)

Poverty Estimates	Number	Rank in State	5-Year % Change	Rank in % Change
Poverty rate in 2010	8.7	16	--	--
In 2000	5.0	17	74.0%	2
Poverty rate for children under 18 in 2010	13.6	14	--	--
In 2000	7.0	17	94.3%	1

Source: US Census Bureau

Labor Force Annual Averages in 2010	Number	% of State	State	Rank in State
Total Labor Force	2,456	0.18%	1,350,309	13
5-year % change	8.2%	-	9.9%	11
10-year % change	23.1%	-	27.0%	6
Employed	2,101	0.18%	1,149,537	13
5-year % change	-2.9%	-	-2.0%	12
10-year % change	8.8%	-	13.2%	6
Unemployed	355	0.18%	200,772	12
5-year % change	234.9%	-	265.6%	5
10-year % change	454.7%	-	321.6%	1
Unemployment Rate	14.5	97.32%	14.9	6
5-year % change	208.5%	-	231.1%	5
10-year % change	353.1%	-	231.1%	1

Source: US Bureau of Labor Statistics

Educational Attainment: ACS 2005-2010	Number	Percent of Population 25+	Rank of % in State	State % of Population 25+
Total Population 25 and Older	3,021	100.0%		100.0%
Less Than 9th Grade	62	2.1%	17	6.3%
9th to 12th, No Diploma	187	6.2%	17	9.4%
High School Graduate (incl. equiv.)	850	28.1%	15	29.7%
Some College, No Degree	1,151	38.1%	1	25.5%
Associate Degree	352	11.7%	1	7.3%
Bachelor's Degree	254	8.4%	15	14.4%
Graduate, Professional or Doctorate Degree	165	5.5%	8	7.4%

Source: US Census Bureau, American Community Survey, 2005-2009 5-Year Estimates

Educational Attainment: Census 2000	Number	Percent of Population 25+	Rank of % in State	State % of Population 25+
Total Population 25 and Older	2,540	100.0%		100.0%
Less Than 9th Grade	50	2.0%	16	6.4%
9th to 12th, No Diploma	287	11.3%	14	12.9%
High School Graduate (incl. equiv.)	754	29.7%	14	29.3%
Some College, No Degree	847	33.3%	2	27.0%
Associate Degree	146	5.7%	11	6.2%
Bachelor's Degree	311	12.2%	3	12.1%
Graduate or Professional Degree	145	5.7%	5	6.1%

Source: US Census Bureau

Workers Living in County in 2000	Number	Rank in State	Pct Dist. in County	Rank of Pct Dist.
Total	1,745	14	100.0%	
Working in County	336	16	19.3%	17
Working Elsewhere	1,409	9	80.7%	1

Source: US Census Bureau (Includes only domestic commuting for workers over 16 years old.)

People Working in County in 2000	Number	Rank in State	Pct Dist. in County	Rank of Pct Dist.
Total	687	16	100.0%	
Living in County	336	16	48.9%	16
Living Elsewhere	351	13	51.1%	2

Source: US Census Bureau (Includes only domestic commuting for workers over 16 years old.)

Commuting Flows in 2000	Number	Rank in State	Pct Dist.
Gross Flow (Living Elsewhere + Working Elsewhere)	1,760	9	100%
Net Flow (Living Elsewhere - Working Elsewhere)	-1,058	15	
Largest Single Inflow : Washoe County, NV	134		7.6%
Largest Single Outflow : Washoe County, NV	900		51.1%

Source: US Census Bureau (Includes only domestic commuting for workers over 16 years old.)

Annual Covered Employment and Wages Over Time (NAICS)	Establishments	Jobs	Average Wage Per Job (*adj)	Rank in State	Pct of State Avg Wage
2010	187	2,811	\$44,608	6	104.9%
2009	198	2,807	\$41,794	10	96.2%
2008	187	2,983	\$40,766	12	93.6%
2007	174	2,929	\$45,572	4	102.8%
2006	154	2,147	\$39,792	11	91.8%
2005	124	1,287	\$39,806	10	92.0%
2004	107	1,060	\$42,816	6	100.0%
2003	89	928	\$43,103	4	102.9%
2002	80	840	\$41,656	7	101.1%
2001	76	863	\$42,501	4	104.2%
2000	77	885	\$40,361	9	98.7%
10-Year Change	110	1,926	\$4,247		
10-Year Percent Change	142.9%	217.6%	10.5%		

Source: US Bureau of Labor Statistics(BLS)

*adj = Adjusted for Inflation; D = Non-Discloseable Data; N/A = Not Available; Note: Average wage may not match published numbers due to rounding.

Annual Industry Distribution of Jobs and Avg. Wage in 2010 (NAICS)	Establishments	Jobs	Pct Dist. in County	Annual Average Wage Per Job	Rank in State
Total Covered Employment and Wages	187	2,811	100.0%	\$44,608	5
Private	181	2,579	91.8%	\$44,438	5
Agri., forestry, hunting	2	D	D	D	N/A
Mining	5	D	D	D	N/A
Construction	28	132	4.7%	\$61,589	3
Manufacturing	14	376	13.4%	\$55,429	2
Wholesale trade	7	D	D	D	N/A
Retail trade	25	69	2.5%	\$17,794	15
Transportation, warehousing	28	1,300	46.2%	\$39,203	12
Utilities	4	D	D	D	N/A
Information	1	D	D	D	N/A
Finance and Insurance	2	D	D	D	N/A
Real Estate, rental, leasing	1	D	D	D	N/A
Professional, technical services	11	26	0.9%	\$51,495	8
Mgmt. of companies, enterprises	2	D	D	D	N/A
Administrative, waste services	6	D	D	D	N/A
Educational services	2	D	D	D	N/A
Health care, social assistance	3	D	D	D	N/A
Arts, entertainment, recreation	7	55	2.0%	\$15,195	11

Accommodation and food services	21	109	3.9%	\$16,465	8
Other services, exc. public admin.	13	138	4.9%	\$23,855	13
Public administration	3	3	0.1%	\$15,864	17

Source: US Bureau of Labor Statistics(BLS)

D = Not shown to avoid disclosure of confidential information.

N/A = This item is not available.

Note: Average wage may not match published numbers due to rounding.

BEA Major Sectors (NAICS) in 2009 (by place of work)		Earnings (\$000)	Avg Earnings Per Job	Rank in State	Jobs	Pct Dist. in County	Pct Dist. in State
	Total by place of work	\$153,446	\$44,568	9	3,443	100.0%	100.0%
	Wage and Salary	\$118,656	\$41,286	11	2,874	83.5%	77.8%
	Proprietors	\$5,087	\$8,940	16	569	16.5%	22.2%
	Farm	\$0	N/A	N/A	0	0.0%	0.2%
	Nonfarm	\$5,087	\$8,940	15	569	16.5%	22.1%
	Farm	\$0	N/A	N/A	0	0.0%	0.3%
	Nonfarm	\$153,446	\$44,568	9	3,443	100.0%	99.7%
	Private	\$137,349	\$43,232	5	3,177	92.3%	88.6%
	Forestry, fishing, etc. *	D	N/A	N/A	D	D	0.1%
21	Mining	D	N/A	N/A	D	D	1.1%
22	Utilities	D	N/A	N/A	D	D	0.3%
23	Construction	\$5,573	\$46,442	5	120	3.5%	6.5%
31-33	Manufacturing	\$21,819	\$64,553	2	338	9.8%	2.9%
42	Wholesale Trade	D	N/A	N/A	D	D	2.6%
44-45	Retail Trade	D	N/A	N/A	D	D	10.1%
48 49	Trans. and warehousing	\$63,116	\$44,323	9	1,424	41.4%	3.5%
51	Information	D	N/A	N/A	D	D	1.2%
52	Finance and insurance	D	N/A	N/A	D	D	7.0%
53	Real Estate and rental and leasing	D	N/A	N/A	D	D	6.3%
54	Professional, technical services	\$2,324	\$23,959	14	97	2.8%	5.3%
55	Management of companies, enterprises	D	N/A	N/A	D	D	1.3%
56	Administrative and waste services	D	N/A	N/A	D	D	6.0%
61	Educational services	D	N/A	N/A	D	D	0.9%
62	Health care, social assistance	D	N/A	N/A	D	D	6.9%
71	Arts, entertainment, and recreation	\$1,129	\$10,264	10	110	3.2%	3.2%
72	Accommodation and food services	\$2,713	\$18,710	9	145	4.2%	19.0%
81	Other services, exc. public admin.	\$6,041	\$28,229	8	214	6.2%	4.3%
NA	Gov. and gov. enterprises	\$16,097	\$60,515	10	266	7.7%	11.1%

Source: US Bureau of Economic Analysis(BEA)

D = Not shown to avoid disclosure of confidential information, but the estimates for this item are included in the totals.

L = Less than 10 jobs, but the estimates for this item are included in the totals.

N/A = Not available or not applicable.

* = "Other" consists of the number of jobs held by U.S. residents employed by international organizations and foreign embassies and consulates in the United States.

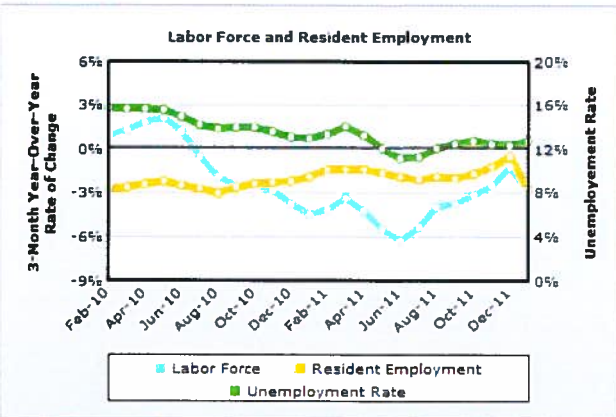
[Home](#) | [About STATS America](#) | [Contact Us](#) | [Report a Problem](#) |



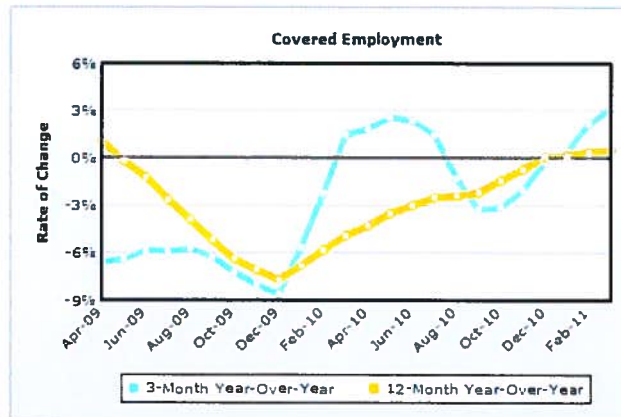
STATS America is a service of the Indiana Business Research Center at Indiana University's Kelley School of Business: www.ibrc.indiana.edu. It was developed with support from the U.S. Department of Commerce, Economic Development Administration and Indiana University.

Updated: April 06, 2012 at 12:27

ECONOMIC CONDITIONS



Data Source: U.S. Bureau of Labor Statistics



Data Source: U.S. Bureau of Labor Statistics

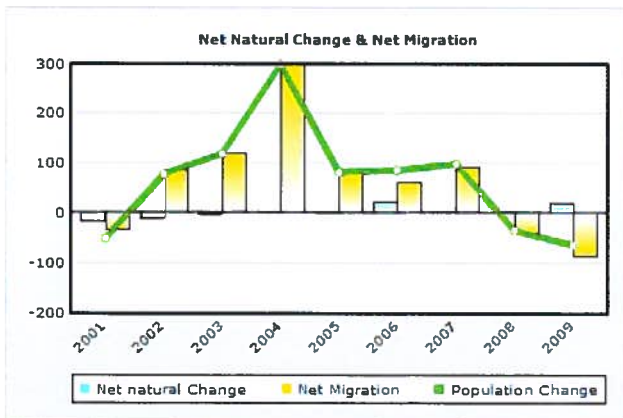
	3-Month Average			3-Month Year-Over-Year Change			
	January 2010	January 2011	January 2012	January 2010 to January 2011		January 2011 to January 2012	
	Number	Number	Number	Number	Percent	Number	Percent
Labor Force	2,498	2,387	2,318	-111	-4.4	-69	-2.9
Resident Employment	2,117	2,077	2,021	-40	-1.9	-56	-2.7
Unemployment Rate (%)	15.3	13	12.8	n/a	n/a	n/a	n/a
	March 2009	March 2010	March 2011	March 2009 to March 2010		March 2010 to March 2011	
Covered Employment	2,729	2,771	2,861	42	1.5	90	3.2

Data Source: U.S. Bureau of Labor Statistics

POPULATION & HOUSEHOLDS

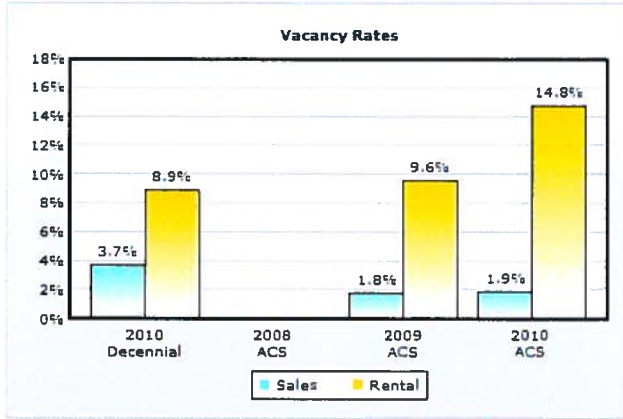
	Decennial Census				ACS & Population Estimates Program						
	April 2000	April 2010	Average Annual Change 2000 to 2010		July 2008	July 2009	July 2010	2008 to 2009		2009 to 2010	
			Number	Percent				Number	Percent	Number	Percent
Population	3,399	4,010	61	1.8	4,099	4,065	4,002	-34	-0.8	-63	-1.5
Households	1,462	1,742	28	1.9	0	1,980	1,826	1,980	0	-154	-7.8

Data Source: 1 - 2000 Census; 2010 Census; U.S. Census Bureau Population Estimates
 2 - 2000 Census; 2010 Census; 2008, 2009 and 2010 American Community Surveys (5 - Year)

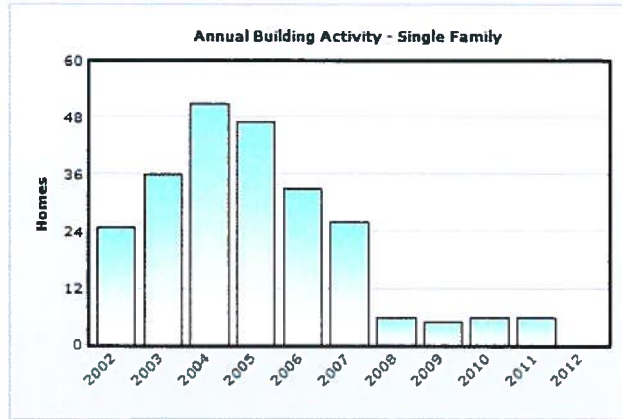


Data Source: U.S. Census Bureau Population Estimates

Notes: 1 - Values in chart reflect July year-to-year changes
 2 - Net Migration includes residual population change



Data Source: 2010 Census; 2008, 2009 and 2010 American Community Surveys (5 - Year)

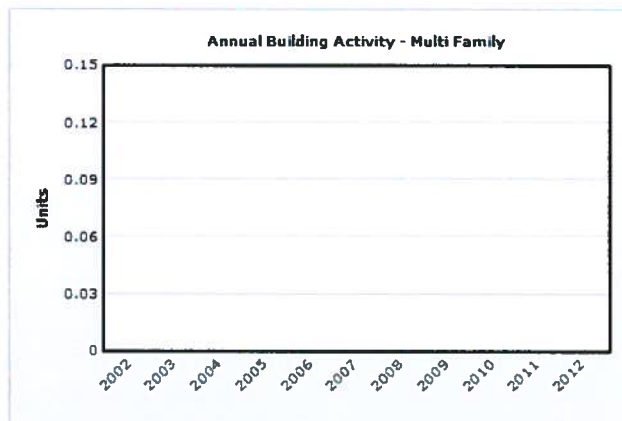


Data Source: U.S. Census Bureau, Building Permits Survey; adjustments by analyst

Note: Data for 2011 and 2012 is preliminary, through January 2012

Housing Inventory by Tenure				
	2010	2008	2009	2010
	Decennial	ACS	ACS	ACS
Total Housing Units	1,990	n/a	2,107	2,019
Occupied	1,742	n/a	1,980	1,826
Owners	1,455	n/a	1,698	1,647
% Owners	83.5	n/a	85.8	90.2
Renters	287	n/a	282	179
% Renters	16.5	n/a	14.2	9.8
Total Vacant	248	n/a	127	193
Available for Sale	56	n/a	31	32
Available for Rent	28	n/a	30	31
Other Vacant	164	n/a	66	130

Data Source: 2010 Census; 2008, 2009 and 2010 American Community Surveys (5 - Year)



Data Source: U.S. Census Bureau, Building Permits Survey; adjustments by analyst

Note: Data for 2011 and 2012 is preliminary, through January 2012

Storey County, Nevada

US Census Quick Facts

<http://quickfacts.census.gov>

People QuickFacts	Storey County	Nevada
Population, 2011 estimate	NA	2,723,322
Population, 2010	4,010	2,700,551
Population, percent change, 2000 to 2010	18.0%	35.1%
Population, 2000	3,399	1,998,257
Persons under 5 years, percent, 2010	4.3%	6.9%
Persons under 18 years, percent, 2010	17.5%	24.6%
Persons 65 years and over, percent, 2010	18.4%	12.0%
Female persons, percent, 2010	49.0%	49.5%
White persons, percent, 2010 (a)	92.1%	66.2%
Black persons, percent, 2010 (a)	1.0%	8.1%
American Indian and Alaska Native persons, percent, 2010 (a)	1.6%	1.2%
Asian persons, percent, 2010 (a)	1.6%	7.2%
Native Hawaiian and Other Pacific Islander, percent, 2010 (a)	0.4%	0.6%
Persons reporting two or more races, percent, 2010	2.2%	4.7%
Persons of Hispanic or Latino origin, percent, 2010 (b)	5.7%	26.5%
White persons not Hispanic, percent, 2010	88.1%	54.1%
Living in same house 1 year & over, 2006-2010	91.2%	78.2%
Foreign born persons, percent, 2006-2010	4.8%	19.3%
Language other than English spoken at home, pct age 5+, 2006-2010	5.0%	28.2%
High school graduates, percent of persons age 25+, 2006-2010	91.8%	84.3%
Bachelor's degree or higher, pct of persons age 25+, 2006-2010	13.9%	21.8%
Veterans, 2006-2010	646	234,081
Mean travel time to work (minutes), workers age 16+, 2006-2010	29.2	23.6
Housing units, 2010	1,990	1,173,814
Homeownership rate, 2006-2010	90.2%	60.1%
Housing units in multi-unit structures, percent, 2006-2010	1.2%	29.4%
Median value of owner-occupied housing units, 2006-2010	\$239,200	\$254,200
Households, 2006-2010	1,826	979,621
Persons per household, 2006-2010	2.20	2.65
Per capita money income in past 12 months (2010 dollars) 2006-2010	\$31,079	\$27,589
Median household income 2006-2010	\$61,525	\$55,726
Persons below poverty level, percent, 2006-2010	5.6%	11.9%

Business QuickFacts	Storey County	Nevada
Private nonfarm establishments, 2009	91	59,785 ²
Private nonfarm employment, 2009	352	1,042,166 ²
Private nonfarm employment, percent change 2000-2009	-24.1%	15.4% ²
Nonemployer establishments, 2009	254	166,864
Total number of firms, 2007	S	221,260
Black-owned firms, percent, 2007	S	3.9%
American Indian- and Alaska Native-owned firms, percent, 2007	S	0.8%
Asian-owned firms, percent, 2007	S	7.9%
Native Hawaiian and Other Pacific Islander-owned firms, percent, 2007	S	0.3%
Hispanic-owned firms, percent, 2007	S	8.1%
Women-owned firms, percent, 2007	S	28.6%
Manufacturers shipments, 2007 (\$1000)	0 ¹	15,735,787
Merchant wholesaler sales, 2007 (\$1000)	0	19,255,893
Retail sales, 2007 (\$1000)	6,765	37,433,983
Retail sales per capita, 2007	\$1,580	\$14,579
Accommodation and food services sales, 2007 (\$1000)	4,780	28,815,533
Building permits, 2010	6	6,443
Federal spending, 2009	10,375	19,893,713 ²
Geography QuickFacts	Storey County	Nevada
Land area in square miles, 2010	262.92	109,781.18
Persons per square mile, 2010	15.3	24.6
FIPS Code	029	32
Metropolitan or Micropolitan Statistical Area	Reno-Sparks, NV Metro Area	

1: Counties with 500 employees or less are excluded.

2: Includes data not distributed by county.

Population estimates for counties will be available in April, 2012 and for cities in June, 2012.

(a) Includes persons reporting only one race.

(b) Hispanics may be of any race, so also are included in applicable race categories.

D: Suppressed to avoid disclosure of confidential information

F: Fewer than 100 firms

FN: Footnote on this item for this area in place of data

NA: Not available

S: Suppressed; does not meet publication standards

X: Not applicable

Z: Value greater than zero but less than half unit of measure shown

Source U.S. Census Bureau: State and County QuickFacts. Data derived from Population Estimates, American Community Survey, Census of Population and Housing, State and County Housing Unit Estimates, County Business Patterns, Nonemployer Statistics, Economic Census, Survey of Business Owners, Building Permits, Consolidated Federal Funds Report

Last Revised: Tuesday, 31-Jan-2012 16:54:32 EST

	Storey County	Error Margin	National Benchmark*	Nevada	Rank (of 16)
Health Outcomes					9
Mortality					9
Premature death			5,466	7,927	
Morbidity					4
Poor or fair health	14%	9-21%	10%	18%	
Poor physical health days	3.7	2.1-5.2	2.6	3.7	
Poor mental health days	3.6	1.9-5.4	2.3	3.7	
Low birthweight			6.0%	8.1%	
Health Factors					4
Health Behaviors					5
Adult smoking	26%	18-37%	14%	22%	
Adult obesity	23%	18-29%	25%	26%	
Physical inactivity	23%	17-30%	21%	24%	
Excessive drinking	19%	13-28%	8%	19%	
Motor vehicle crash death rate			12	17	
Sexually transmitted infections	92		84	386	
Teen birth rate			22	53	
Clinical Care					5
Uninsured	22%	20-24%	11%	25%	
Primary care physicians			631:1	1,153:1	
Preventable hospital stays			49	59	
Diabetic screening			89%	76%	
Mammography screening			74%	60%	
Social & Economic Factors					4
High school graduation	91%			70%	
Some college	75%	26-100%	68%	54%	
Unemployment	14.5%		5.4%	14.9%	
Children in poverty	14%	9-18%	13%	21%	
Inadequate social support	18%	11-28%	14%	23%	
Children in single-parent households	33%	15-52%	20%	34%	
Violent crime rate	349		73	728	
Physical Environment					8
Air pollution-particulate matter days	0		0	1	
Air pollution-ozone days	0		0	24	
Access to recreational facilities	0		16	7	
Limited access to healthy foods	20%		0%	4%	
Fast food restaurants	11%		25%	56%	

* 90th percentile, i.e., only 10% are better

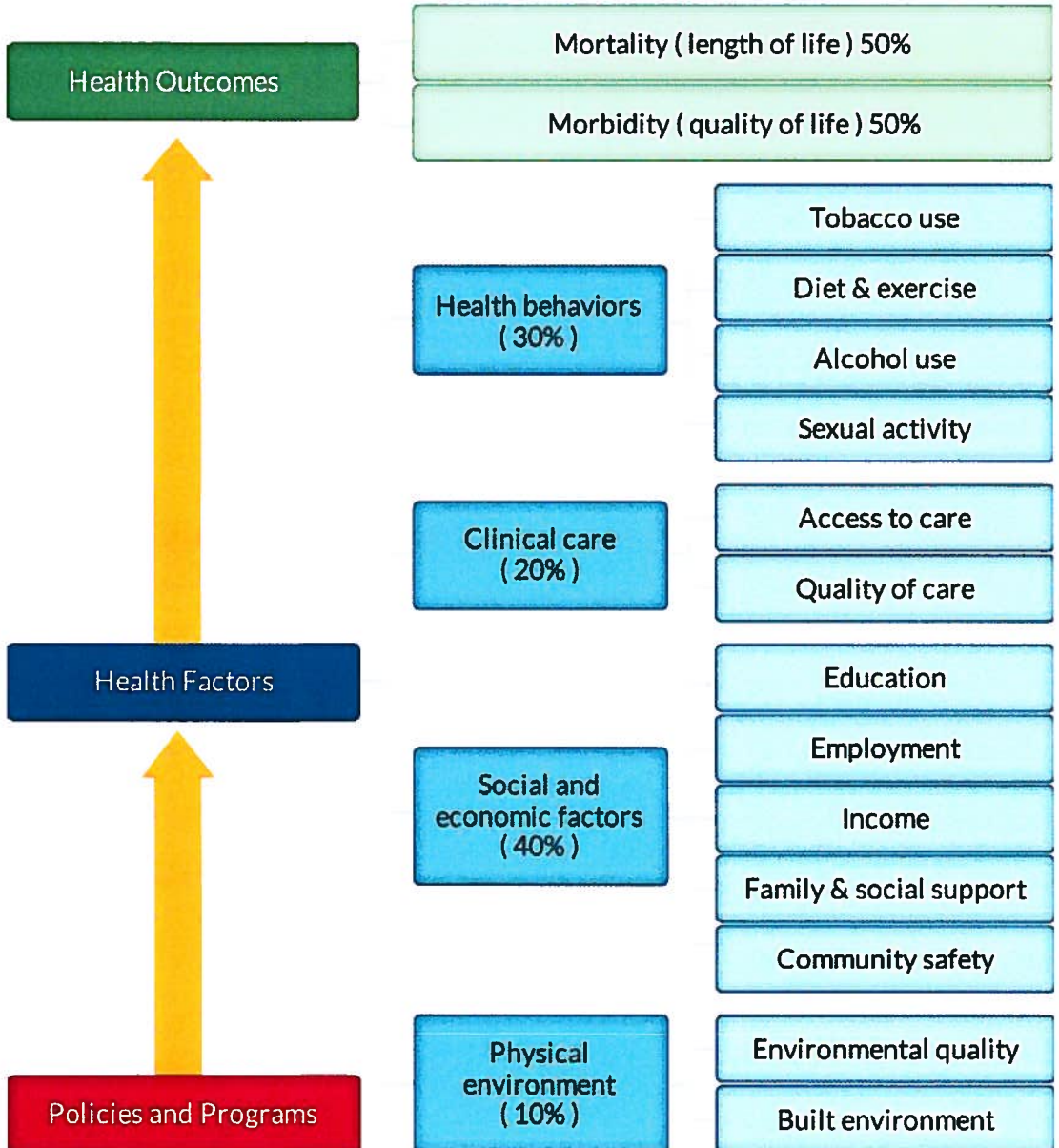
Note: Blank values reflect unreliable or missing data

2012

County Health Rankings

The 2012 *County Health Rankings* report ranks Nevada counties according to their summary measures of **health outcomes** and **health factors**. Counties also receive a rank for mortality, morbidity, health behaviors, clinical care, social and economic factors, and the physical environment. The figure below depicts the structure of the *Rankings* model; those having high ranks (e.g., 1 or 2) are estimated to be the “healthiest.”

Our summary **health outcomes** rankings are based on an equal weighting of mortality and morbidity measures. The summary **health factors** rankings are based on weighted scores of four types of factors: behavioral, clinical, social and economic, and environmental. The weights for the factors (shown in parentheses in the figure) are based upon a review of the literature and expert input, but represent just one way of combining these factors.

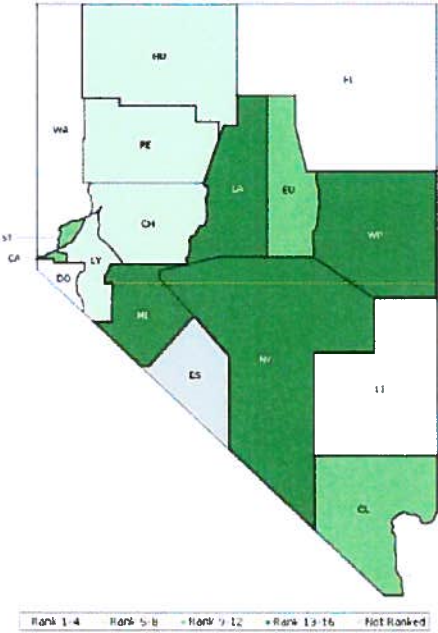


County Health Rankings model ©2012 UWPHI

The maps on this page and the next display Nevada’s counties divided into groups by health rank. Maps help locate the healthiest and least healthy counties in the state. The lighter colors indicate better

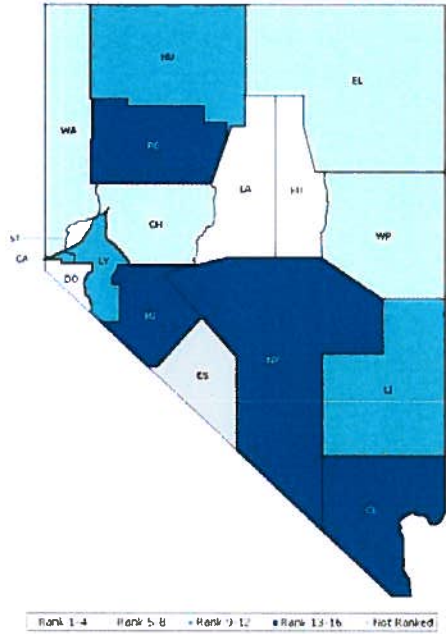
performance in the respective summary rankings. The green map shows the distribution of summary health outcomes. The blue displays the distribution of the summary rank for health factors.

HEALTH OUTCOMES



County	Rank	County	Rank	County	Rank	County	Rank
Carson City	12	Esmeralda	NR	Lyon	5	Washoe	4
Churchill	7	Eureka	11	Mineral	16	White Pine	13
Clark	10	Humboldt	8	Nye	15		
Douglas	1	Lander	14	Pershing	6		
Elko	2	Lincoln	3	Storey	9		

HEALTH FACTORS



County	Rank	County	Rank	County	Rank	County	Rank
Carson City	9	Esmeralda	NR	Lyon	12	Washoe	5
Churchill	8	Eureka	3	Mineral	16	White Pine	6
Clark	13	Humboldt	11	Nye	15		
Douglas	1	Lander	2	Pershing	14		
Elko	7	Lincoln	10	Storey	4		

Summary Health Outcomes & Health Factors Rankings

Counties receive two summary ranks:

- Health Outcomes
- Health Factors

Health outcomes represent how healthy a county is while health factors represent what influences the health of the county.

Each of these ranks represents a weighted summary of a number of measures.

Rank	Health Outcomes	Rank	Health Factors
1	Douglas	1	Douglas
2	Elko	2	Lander
3	Lincoln	3	Eureka
4	Washoe	4	Storey
5	Lyon	5	Washoe
6	Pershing	6	White Pine
7	Churchill	7	Elko
8	Humboldt	8	Churchill
9	Storey	9	Carson City
10	Clark	10	Lincoln
11	Eureka	11	Humboldt
12	Carson City	12	Lyon
13	White Pine	13	Clark
14	Lander	14	Pershing
15	Nye	15	Nye
16	Mineral	16	Mineral

Not Ranked: Esmeralda

2012 County Health Rankings: Measures, Data Sources, and Years of Data

	Measure	Data Source	Years of Data
HEALTH OUTCOMES			
Mortality	Premature death	National Center for Health Statistics	2006-2008
Morbidity	Poor or fair health	Behavioral Risk Factor Surveillance System	2004-2010
	Poor physical health days	Behavioral Risk Factor Surveillance System	2004-2010
	Poor mental health days	Behavioral Risk Factor Surveillance System	2004-2010
	Low birthweight	National Center for Health Statistics	2002-2008
HEALTH FACTORS			
HEALTH BEHAVIORS			
Tobacco Use	Adult smoking	Behavioral Risk Factor Surveillance System	2004-2010
Diet and Exercise	Adult obesity	National Center for Chronic Disease Prevention and Health Promotion	2009
	Physical inactivity	National Center for Chronic Disease Prevention and Health Promotion	2009
Alcohol Use	Excessive drinking	Behavioral Risk Factor Surveillance System	2004-2010
	Motor vehicle crash death rate	National Center for Health Statistics	2002-2008
Sexual Activity	Sexually transmitted infections	National Center for Hepatitis, HIV, STD and TB Prevention	2009
	Teen birth rate	National Center for Health Statistics	2002-2008
CLINICAL CARE			
Access to Care	Uninsured	Small Area Health Insurance Estimates	2009
	Primary care physicians	Health Resources & Services Administration	2009
Quality of Care	Preventable hospital stays	Medicare/Dartmouth Institute	2009
	Diabetic screening	Medicare/Dartmouth Institute	2009
	Mammography screening	Medicare/Dartmouth Institute	2009
SOCIAL AND ECONOMIC FACTORS			
Education	High school graduation	National Center for Education Statistics and state-specific sources ¹	2008-2010
	Some college	American Community Survey	2006-2010
Employment	Unemployment	Bureau of Labor Statistics	2010
Income	Children in poverty	Small Area Income and Poverty Estimates	2010
Family and Social Support	Inadequate social support	Behavioral Risk Factor Surveillance System	2006-2010
	Children in single-parent households	American Community Survey	2006-2010
Community Safety	Violent crime rate ²	Federal Bureau of Investigation	2007-2009
PHYSICAL ENVIRONMENT			
Environmental Quality³	Air pollution-particulate matter days	U.S. Environmental Protection Agency	2007
	Air pollution-ozone days	U.S. Environmental Protection Agency	2007
Built Environment	Access to recreational facilities	Census County Business Patterns	2009
	Limited access to healthy foods ⁴	U.S. Department of Agriculture	2006
	Fast food restaurants	Census County Business Patterns	2009

¹ NCES used for AK, AL, AR, CA, CT, FL, HI, ID, KY, MT, ND, NJ, OK, SD and TN

² State data source for IL.

³ Not available for AK and HI.

⁴ Access to Healthy Foods (2009) from Census Zip Code Business Patterns for AK and HI.