

Pershing County, NV in Profile



Pershing County is one of 17 counties and county equivalent cities in Nevada. It has 6,036.6 sq. miles in land area and a population density of 1.1 per square mile. On the most recent census form, 96.9% of the population reported only one race, with 3.7% of these reporting African-American. The population of this county is 22.3% Hispanic (of any race). The average household size is 2.50 persons compared to an average family size of 3.00 persons.

In 2010 mining was the largest of 20 major sectors. It had an average wage per job of \$64,009. Per capita income grew by 7.9% between 2000 and 2010 (adjusted for inflation).

People & Income Overview (By Place of Residence)	Value	Rank in State	Industry Overview (2010) (By Place of Work)	Value	Rank in State
Population (2011)	6,734	11	Covered Employment	1,617	14
Growth (%) since 2010 Census	-0.3%	10	Avg wage per job	\$41,721	11
Households (2010)	2,018	13	Manufacturing - % all jobs in County	4.2%	6
Labor Force (persons) (2010)	2,585	12	Avg wage per job	\$26,994	11
Unemployment Rate (2010)	12.2	10	Transportation & Warehousing - % all jobs in County	1.7%	9
Per Capita Personal Income (2010)	\$23,735	16	Avg wage per job	\$59,777	3
Median Household Income (2010)	\$44,684	13	Health Care, Social Assist. - % all jobs in County	D	N/A
Poverty Rate (2010)	18.5	2	Avg wage per job	D	N/A
H.S. Diploma or More - % of Adults 25+ (2010 ACS 5yr)	79.4	16	Finance and Insurance - % all jobs in County	D	N/A
Bachelor's Deg. or More - % of Adults 25+ (2010 ACS 5yr)	12.4	15	Avg wage per job	D	N/A

Population Over Time	Number	Rank in State	Percent of State	State
2011	6,734	11	0.25%	2,723,322
2010	6,753	11	0.25%	2,700,551
2000	6,693	11	0.33%	1,998,257
1990	4,336	13	0.36%	1,201,675
1980	3,408	14	0.43%	800,508
2000 to 2010 % change	0.9%	14		35.1%
1990 to 2010 % change	55.7%	7		124.7%
1980 to 2010 % change	98.2%	9		237.4%

Source: US Census Bureau

Components of Population Change in 2010/2011	Number	Rank in State	Percent of State	State
Net Domestic Migration (chg 2010/2011)	-14	4		-8,008
Net International Migration (chg 2010/2011)	1	14	0.01%	9,679
Natural Increase (births minus deaths)	-8	13	-0.05%	17,399
Births	45	13	0.12%	36,772
Deaths	53	12	0.27%	19,373

Source: US Census Bureau

Population Estimates by Age in 2010	Number	Rank in State	Pct Dist. in County	Pct Dist. in State
Preschool (0 to 4)	346	12	5.1%	6.9%
School Age (5 to 17)	976	13	14.5%	17.7%
College Age (18 to 24)	521	11	7.7%	9.2%
Young Adult (25 to 44)	2,008	11	29.7%	28.5%
Older Adult(45 to 64)	2,027	11	30.0%	25.6%
Older (65 plus)	875	13	13.0%	12.0%
Median Age	41.0	8		Median Age = 36.3

Sources: US Census Bureau; Median age calculated by the IBRC.

Population Estimates by Race and Hispanic Origin in 2010	Number	Rank in State	Pct Dist. in County	Pct Dist. in State
American Ind. or Alaskan Native Alone	217	13	3.2%	1.2%
Asian Alone	87	11	1.3%	7.2%
Black Alone	253	9	3.7%	8.1%
Native Hawaiian and Other Pac. Isl. Alone	7	13	0.1%	0.6%
White Alone	5,528	11	81.9%	66.2%
Two or More Race Groups	206	12	3.1%	4.7%
Hispanic or Latino (can be of any race)				
Non-Hispanic or Latino	5,245	11	77.7%	73.5%
Hispanic or Latino	1,508	10	22.3%	26.5%

Source: US Census Bureau

Hispanic or Latino Population in 2010 (can be of any race)	Number	Rank in State	Pct Dist. in County	Pct Dist. in State
Hispanic	1,508	10	22.3%	26.5%
Mexican	910	11	13.5%	20.0%
Cuban	3	13	0.0%	0.8%
Puerto Rican	20	11	0.3%	0.8%
Other	575	9	8.5%	4.9%
White, Not Hispanic (reporting white alone)	4,605	12	68.2%	54.1%

Source: US Census Bureau, American Community Survey, 5 Year Estimates

Households in 2010	Number	Rank in State	Pct All Hhlds in County	Pct All Hhlds in State
Total Households	2,018	13	100.0%	100.0%
Family Households	1,375	12	68.1%	65.3%
Married with Children	365	13	18.1%	19.6%
Married without Children	683	12	33.8%	26.4%
Single Parents	206	12	10.2%	10.4%
Other	121	13	6.0%	8.9%
Non-family Households	643	14	31.9%	34.7%
Living Alone	536	14	26.6%	25.7%
Average Household Size	2.50	7		
Average Family Household Size	3.00	8		

Source: US Census Bureau/font>

Housing Units in 2010	Number	Rank in State	Pct All HU in County	Pct All HU in State
2009 Housing Units (Census Estimate)	2,402	13		
Total Housing Units	2,464	14	100.0%	100.0%
Occupied	2,018	13	81.9%	85.7%
Owner Occupied	1,394	15	56.6%	50.4%
Renter Occupied	624	12	25.3%	35.3%
Vacant	446	14	18.1%	14.3%
For seasonal or recreational use	77	14	3.1%	2.8%

Source: US Census Bureau

Residential Building Permits in 2010	Units	Pct Dist. in County	Pct Dist. in State	Cost (\$000)
Total Permits Filed	2	100.0%	100.0%	\$249
Single Family	2	100.0%	83.2%	\$249
Two Family	0	0.0%	0.3%	\$0
Three & Four Family	0	0.0%	2.2%	\$0
Five Families and More	0	0.0%	14.3%	\$0

Source: US Census Bureau

Median Income	Number	Rank in State	Percent of State
Median household income in 2010	\$44,684	13	87.6%
Median household income in 2000 (adj. for inflation)	\$50,880	12	89.9%

5-year percent change 2000 to 2010	-12.2%	14
------------------------------------	--------	--------------------

Source: US Census Bureau

Per Capita Personal Income	Number	Rank in State	Percent of State
Per capita income - 2010	\$23,735	16	64.3%
Per capita income - 2000 (adj. for inflation)	\$21,999	17	56.1%
Per capita income - 1990 (adj. for inflation)	\$26,872	15	80.4%
Per capita income - 1980 (adj. for inflation)	\$26,101	13	84.5%
10-year % change	7.9%	10	
20-year % change	-11.7%	15	
30-year % change	-9.1%	17	

Source: US Bureau of Economic Analysis

Personal Income in 2010 (\$000)	Number	5-Year % Change (adj*)	Rank in % Change
Total Earnings by Place of Work	\$98,835	-7.3%	11
Minus: Contributions for government social insurance	\$8,154	-4.0%	14
Personal contributions for government social insurance	\$4,365	3.1%	13
Employer contributions for government social insurance	\$3,789	-11.0%	12
Plus: Adjustment for residence	\$9,095	-515.8%	16
Equals: Net Earnings by Place of Residence	\$99,776	4.0%	6
Plus: Dividends, rent, interest	\$23,192	-6.8%	11
Plus: Transfer payments	\$37,365	46.0%	8
Equals: Personal Income by Place of Residence	\$160,333	9.5%	5

Source: US Bureau of Economic Analysis (*adj = Adjusted for Inflation)

Poverty Estimates	Number	Rank in State	5-Year % Change	Rank in % Change
Poverty rate in 2010	18.5	2	--	--
In 2000	14.2	3	30.3%	7
Poverty rate for children under 18 in 2010	22.0	4	--	--
In 2000	16.7	4	31.7%	8

Source: US Census Bureau

Labor Force Annual Averages in 2010	Number	% of State	State	Rank in State
Total Labor Force	2,585	0.19%	1,350,309	12
5-year % change	6.6%	-	9.9%	13
10-year % change	1.3%	-	27.0%	15
Employed	2,269	0.20%	1,149,537	12
5-year % change	-1.3%	-	-2.0%	10
10-year % change	-7.0%	-	13.2%	15
Unemployed	316	0.16%	200,772	13
5-year % change	150.8%	-	265.6%	16
10-year % change	179.6%	-	321.6%	10
Unemployment Rate	12.2	81.88%	14.9	10
5-year % change	134.6%	-	231.1%	13
10-year % change	177.3%	-	231.1%	7

Source: US Bureau of Labor Statistics

Educational Attainment: ACS 2005-2010	Number	Percent of Population 25+	Rank of % in State	State % of Population 25+
Total Population 25 and Older	5,109	100.0%		100.0%
Less Than 9th Grade	334	6.5%	5	6.3%
9th to 12th, No Diploma	719	14.1%	2	9.4%
High School Graduate (incl. equiv.)	1,808	35.4%	9	29.7%
Some College, No Degree	1,269	24.8%	13	25.5%
Associate Degree	345	6.8%	11	7.3%
Bachelor's Degree	450	8.8%	13	14.4%
Graduate, Professional or Doctorate Degree	184	3.6%	12	7.4%

Source: US Census Bureau, American Community Survey, 2005-2009 5-Year Estimates

Educational Attainment: Census 2000	Number	Percent of Population 25+	Rank of % in State	State % of Population 25+
Total Population 25 and Older	4,498	100.0%		100.0%

Less Than 9th Grade	375	8.3%	1	6.4%
9th to 12th, No Diploma	707	15.7%	4	12.9%
High School Graduate (incl. equiv.)	1,647	36.6%	5	29.3%
Some College, No Degree	1,213	27.0%	9	27.0%
Associate Degree	163	3.6%	17	6.2%
Bachelor's Degree	235	5.2%	17	12.1%
Graduate or Professional Degree	158	3.5%	11	6.1%

Source: US Census Bureau

Workers Living in County in 2000	Number	Rank in State	Pct Dist. in County	Rank of Pct Dist.
Total	2,242	12	100.0%	
Working in County	1,669	13	74.4%	13
Working Elsewhere	573	11	25.6%	5

Source: US Census Bureau (Includes only domestic commuting for workers over 16 years old.)

People Working in County in 2000	Number	Rank in State	Pct Dist. in County	Rank of Pct Dist.
Total	2,141	12	100.0%	
Living in County	1,669	13	78.0%	12
Living Elsewhere	472	11	22.0%	6

Source: US Census Bureau (Includes only domestic commuting for workers over 16 years old.)

Commuting Flows in 2000	Number	Rank in State	Pct Dist.
Gross Flow (Living Elsewhere + Working Elsewhere)	1,045	12	100%
Net Flow (Living Elsewhere - Working Elsewhere)	-101	11	
Largest Single Inflow : Humboldt County, NV	164		15.7%
Largest Single Outflow : Humboldt County, NV	390		37.3%

Source: US Census Bureau (Includes only domestic commuting for workers over 16 years old.)

Annual Covered Employment and Wages Over Time (NAICS)	Establishments	Jobs	Average Wage Per Job (*adj)	Rank in State	Pct of State Avg Wage
2010	136	1,617	\$41,721	12	98.1%
2009	135	1,638	\$41,129	11	94.7%
2008	139	1,820	\$41,212	10	94.7%
2007	135	1,838	\$44,220	6	99.8%
2006	139	1,843	\$41,485	9	95.7%
2005	135	1,853	\$41,014	9	94.8%
2004	130	1,905	\$41,580	10	97.1%
2003	134	1,873	\$40,737	10	97.3%
2002	131	1,913	\$39,171	11	95.1%
2001	112	1,917	\$39,452	11	96.7%
2000	118	2,017	\$41,109	6	100.6%
10-Year Change	18	-400	\$612		
10-Year Percent Change	15.3%	-19.8%	1.5%		

Source: US Bureau of Labor Statistics(BLS)

*adj = Adjusted for Inflation; D = Non-Discloseable Data; N/A = Not Available; Note: Average wage may not match published numbers due to rounding.

Annual Industry Distribution of Jobs and Avg. Wage in 2010 (NAICS)	Establishments	Jobs	Pct Dist. in County	Annual Average Wage Per Job	Rank in State
Total Covered Employment and Wages	136	1,617	100.0%	\$41,721	11
Private	108	908	56.2%	\$40,685	9
Agri., forestry, hunting	14	88	5.4%	\$31,714	3
Mining	8	335	20.7%	\$64,009	8
Construction	5	4	0.2%	\$19,125	12
Manufacturing	6	68	4.2%	\$26,994	11
Wholesale trade	5	D	D	D	N/A

Retail trade	14	137	8.5%	\$22,570	11
Transportation, warehousing	10	28	1.7%	\$59,777	3
Utilities	2	D	D	D	N/A
Information	3	D	D	D	N/A
Finance and Insurance	5	D	D	D	N/A
Real Estate, rental, leasing	4	D	D	D	N/A
Professional, technical services	5	15	0.9%	\$48,850	10
Mgmt. of companies, enterprises	2	D	D	D	N/A
Administrative, waste services	4	D	D	D	N/A
Educational services	9	D	D	D	N/A
Health care, social assistance	9	D	D	D	N/A
Arts, entertainment, recreation	1	D	D	D	N/A
Accommodation and food services	13	134	8.3%	\$12,922	13
Other services, exc. public admin.	7	25	1.6%	\$28,118	9
Public administration	11	142	8.8%	\$30,250	15

Source: US Bureau of Labor Statistics(BLS)

D = Not shown to avoid disclosure of confidential information.

N/A = This item is not available.

Note: Average wage may not match published numbers due to rounding.

BEA Major Sectors (NAICS) in 2010 (by place of work)		Earnings (\$000)	Avg Earnings Per Job	Rank in State	Jobs	Pct Dist. in County	Pct Dist. in State
Total by place of work		\$98,835	\$43,387	11	2,278	100.0%	100.0%
Wage and Salary		\$72,412	\$42,051	11	1,722	75.6%	77.7%
Proprietors		\$6,353	\$11,426	11	556	24.4%	22.3%
Farm		\$1,444	\$13,248	9	109	4.8%	0.2%
Nonfarm		\$4,909	\$10,982	10	447	19.6%	22.2%
Farm		\$7,579	\$32,810	6	231	10.1%	0.3%
Nonfarm		\$91,256	\$44,580	10	2,047	89.9%	99.7%
Private		\$48,589	\$37,176	11	1,307	57.4%	88.2%
Forestry, fishing, etc. *		D	D	N/A	D	D	0.1%
21	Mining	\$26,756	\$72,707	6	368	16.2%	1.1%
22	Utilities	D	D	N/A	D	D	0.3%
23	Construction	\$788	\$25,419	11	31	1.4%	5.1%
31-33	Manufacturing	\$2,439	\$28,360	11	86	3.8%	2.8%
42	Wholesale Trade	D	D	N/A	D	D	2.5%
44-45	Retail Trade	\$5,427	\$27,548	7	197	8.6%	10.3%
48-49	Trans. and warehousing	\$2,400	\$64,865	2	37	1.6%	3.6%
51	Information	D	D	N/A	D	D	1.2%
52	Finance and insurance	D	D	N/A	D	D	6.2%
53	Real Estate and rental and leasing	D	D	N/A	D	D	6.2%
54	Professional, technical services	\$1,146	\$23,388	11	49	2.2%	5.4%
55	Management of companies, enterprises	D	D	N/A	D	D	1.5%
56	Administrative and waste services	D	D	N/A	D	D	6.4%
61	Educational services	D	D	N/A	D	D	0.9%
62	Health care, social assistance	D	D	N/A	D	D	7.3%
71	Arts, entertainment, and recreation	L	D	N/A	15	0.7%	3.1%
72	Accommodation and food services	\$2,433	\$16,007	12	152	6.7%	19.5%
81	Other services, exc. public admin.	\$2,114	\$25,780	14	82	3.6%	4.5%
NA	Gov. and gov. enterprises	\$42,667	\$57,658	13	740	32.5%	11.4%

Source: US Bureau of Economic Analysis(BEA)

D = Not shown to avoid disclosure of confidential information, but the estimates for this item are included in the totals.

L = Less than 10 jobs, but the estimates for this item are included in the totals.

N/A = Not available or not applicable.

* = "Other" consists of the number of jobs held by U.S. residents employed by international organizations and foreign embassies and consulates in the United States.

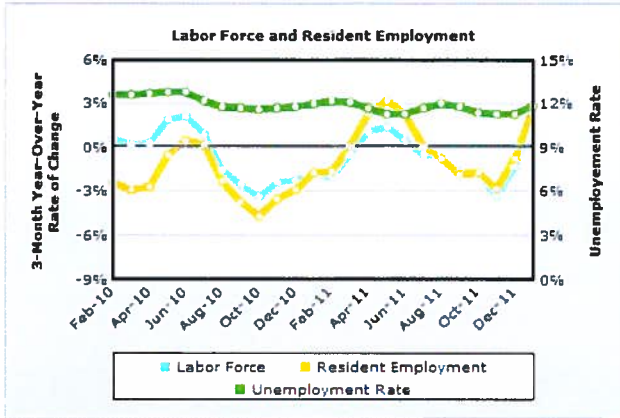
[Home](#) | [About STATS America](#) | [Contact Us](#) | [Report a Problem](#) |



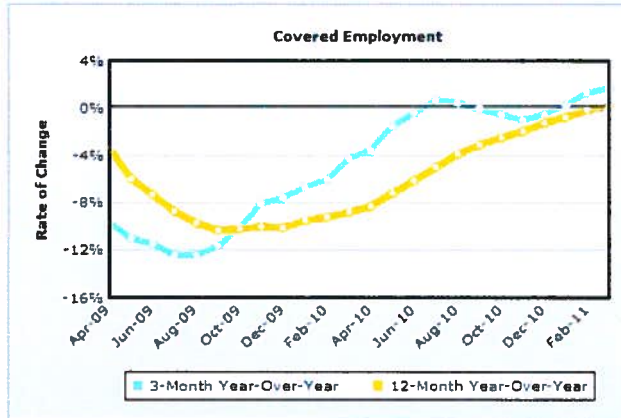
STATS America is a service of the Indiana Business Research Center at Indiana University's Kelley School of Business: www.ibrc.indiana.edu. It was developed with support from the U.S. Department of Commerce, Economic Development Administration and Indiana University.

Updated: April 27, 2012 at 17:26

ECONOMIC CONDITIONS



Data Source: U.S. Bureau of Labor Statistics



Data Source: U.S. Bureau of Labor Statistics

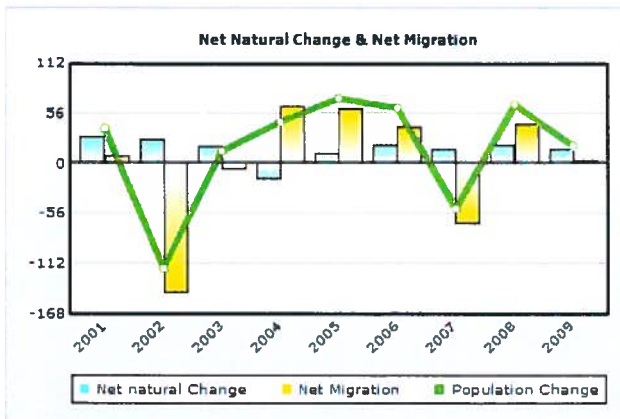
	3-Month Average			3-Month Year-Over-Year Change			
	January 2010	January 2011	January 2012	January 2010 to January 2011		January 2011 to January 2012	
	Number	Percent	Number	Number	Percent	Number	Percent
Labor Force	2,559	2,512	2,576	-47	-1.8	64	2.5
Resident Employment	2,249	2,211	2,270	-38	-1.7	59	2.7
Unemployment Rate (%)	12.1	12	11.9	n/a	n/a	n/a	n/a
	March 2009	March 2010	March 2011	March 2009 to March 2010		March 2010 to March 2011	
Covered Employment	1,643	1,574	1,601	-69	-4.2	27	1.7

Data Source: U.S. Bureau of Labor Statistics

POPULATION & HOUSEHOLDS

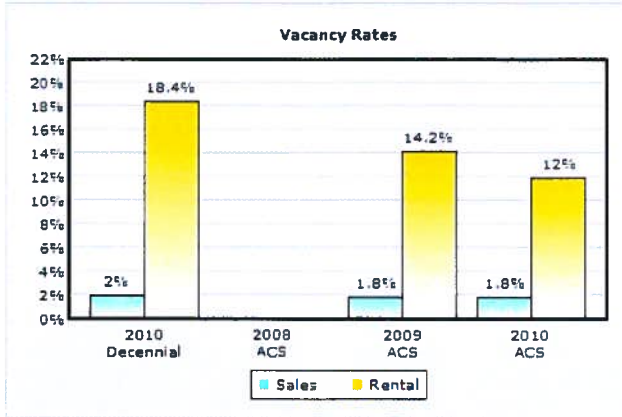
	Decennial Census				ACS & Population Estimates Program						
	April 2000	April 2010	Average Annual Change 2000 to 2010		July 2008	July 2009	July 2010	2008 to 2009		2009 to 2010	
			Number	Percent				Number	Percent	Number	Percent
Population	6,693	6,753	6	0.1	6,665	6,731	6,751	66	1	20	0.3
Households	1,962	2,018	6	0.3	0	1,925	1,980	1,925	0	55	2.9

Data Source: 1 - 2000 Census; 2010 Census; U.S. Census Bureau Population Estimates
2 - 2000 Census; 2010 Census; 2008, 2009 and 2010 American Community Surveys (5 - Year)

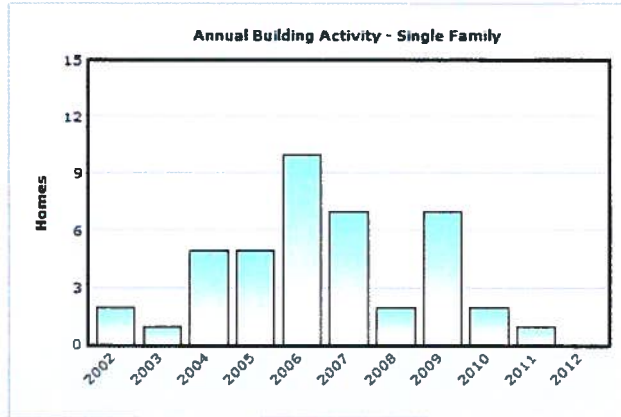


Data Source: U.S. Census Bureau Population Estimates

Notes: 1 - Values in chart reflect July year-to-year changes
2 - Net Migration includes residual population change



Data Source: 2010 Census; 2008, 2009 and 2010 American Community Surveys (5 - Year)

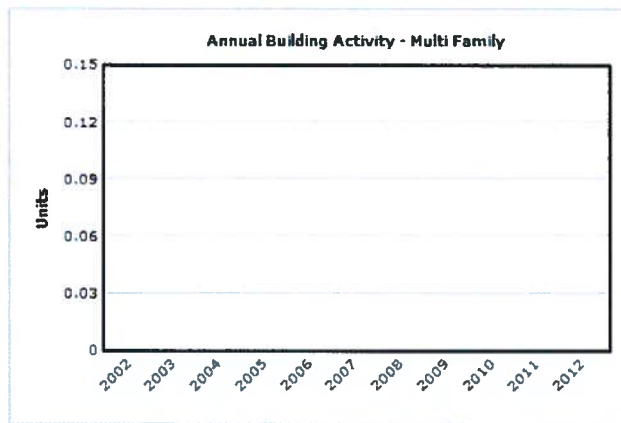


Data Source: U.S. Census Bureau, Building Permits Survey; adjustments by analyst

Note: Data for 2011 and 2012 is preliminary, through January 2012

Housing Inventory by Tenure				
	2010 Decennial	2008 ACS	2009 ACS	2010 ACS
Total Housing Units	2,464	n/a	2,404	2,465
Occupied	2,018	n/a	1,925	1,980
Owners	1,394	n/a	1,276	1,395
% Owners	69.1	n/a	66.3	70.5
Renters	624	n/a	649	585
% Renters	30.9	n/a	33.7	29.5
Total Vacant	446	n/a	479	485
Available for Sale	29	n/a	23	25
Available for Rent	141	n/a	107	80
Other Vacant	276	n/a	349	380

Data Source: 2010 Census; 2008, 2009 and 2010 American Community Surveys (5 - Year)



Data Source: U.S. Census Bureau, Building Permits Survey; adjustments by analyst

Note: Data for 2011 and 2012 is preliminary, through January 2012

Pershing County, Nevada

US Census Quick Facts
<http://quickfacts.census.gov>

People QuickFacts	Pershing County	Nevada
Population, 2011 estimate	NA	2,723,322
Population, 2010	6,753	2,700,551
Population, percent change, 2000 to 2010	0.9%	35.1%
Population, 2000	6,693	1,998,257
Persons under 5 years, percent, 2010	5.1%	6.9%
Persons under 18 years, percent, 2010	19.6%	24.6%
Persons 65 years and over, percent, 2010	13.0%	12.0%
Female persons, percent, 2010	36.8%	49.5%
White persons, percent, 2010 (a)	81.9%	66.2%
Black persons, percent, 2010 (a)	3.7%	8.1%
American Indian and Alaska Native persons, percent, 2010 (a)	3.2%	1.2%
Asian persons, percent, 2010 (a)	1.3%	7.2%
Native Hawaiian and Other Pacific Islander, percent, 2010 (a)	0.1%	0.6%
Persons reporting two or more races, percent, 2010	3.1%	4.7%
Persons of Hispanic or Latino origin, percent, 2010 (b)	22.3%	26.5%
White persons not Hispanic, percent, 2010	68.2%	54.1%
Living in same house 1 year & over, 2006-2010	81.2%	78.2%
Foreign born persons, percent, 2006-2010	13.2%	19.3%
Language other than English spoken at home, pct age 5+, 2006-2010	20.1%	28.2%
High school graduates, percent of persons age 25+, 2006-2010	79.4%	84.3%
Bachelor's degree or higher, pct of persons age 25+, 2006-2010	12.4%	21.8%
Veterans, 2006-2010	904	234,081
Mean travel time to work (minutes), workers age 16+, 2006-2010	19.9	23.6
Housing units, 2010	2,464	1,173,814
Homeownership rate, 2006-2010	70.5%	60.1%
Housing units in multi-unit structures, percent, 2006-2010	10.4%	29.4%
Median value of owner-occupied housing units, 2006-2010	\$134,500	\$254,200
Households, 2006-2010	1,980	979,621
Persons per household, 2006-2010	2.38	2.65
Per capita money income in past 12 months (2010 dollars) 2006-2010	\$17,519	\$27,589
Median household income 2006-2010	\$56,491	\$55,726
Persons below poverty level, percent, 2006-2010	13.7%	11.9%

Business QuickFacts	Pershing County	Nevada
Private nonfarm establishments, 2009	81	59,785 ²
Private nonfarm employment, 2009	1,071	1,042,166 ²
Private nonfarm employment, percent change 2000-2009	-16.2%	15.4% ²
Nonemployer establishments, 2009	227	166,864
Total number of firms, 2007	223	221,260
Black-owned firms, percent, 2007	F	3.9%
American Indian- and Alaska Native-owned firms, percent, 2007	F	0.8%
Asian-owned firms, percent, 2007	F	7.9%
Native Hawaiian and Other Pacific Islander-owned firms, percent, 2007	F	0.3%
Hispanic-owned firms, percent, 2007	F	8.1%
Women-owned firms, percent, 2007	S	28.6%
Manufacturers shipments, 2007 (\$1000)	0 ¹	15,735,787
Merchant wholesaler sales, 2007 (\$1000)	D	19,255,893
Retail sales, 2007 (\$1000)	43,044	37,433,983
Retail sales per capita, 2007	\$6,751	\$14,579
Accommodation and food services sales, 2007 (\$1000)	9,241	28,815,533
Building permits, 2010	2	6,443
Federal spending, 2009	64,236	19,893,713 ²
Geography QuickFacts	Pershing County	Nevada
Land area in square miles, 2010	6,036.56	109,781.18
Persons per square mile, 2010	1.1	24.6
FIPS Code	027	32
Metropolitan or Micropolitan Statistical Area	None	

1: Counties with 500 employees or less are excluded.

2: Includes data not distributed by county.

Population estimates for counties will be available in April, 2012 and for cities in June, 2012.

(a) Includes persons reporting only one race.

(b) Hispanics may be of any race, so also are included in applicable race categories.

D: Suppressed to avoid disclosure of confidential information

F: Fewer than 100 firms

FN: Footnote on this item for this area in place of data

NA: Not available

S: Suppressed; does not meet publication standards

X: Not applicable

Z: Value greater than zero but less than half unit of measure shown

Source U.S. Census Bureau: State and County QuickFacts. Data derived from Population Estimates, American Community Survey, Census of Population and Housing, State and County Housing Unit Estimates, County Business Patterns, Nonemployer Statistics, Economic Census, Survey of Business Owners, Building Permits, Consolidated Federal Funds Report

Last Revised: Tuesday, 31-Jan-2012 16:54:32 EST

	Pershing County	Error Margin	National Benchmark*	Nevada	Rank (of 16)
Health Outcomes					6
Mortality					2
Premature death	6,657	4,806-8,508	5,466	7,927	
Morbidity					14
Poor or fair health	18%	13-25%	10%	18%	
Poor physical health days	4.2	2.9-5.5	2.6	3.7	
Poor mental health days	4.6	2.9-6.2	2.3	3.7	
Low birthweight	7.9%	5.2-10.6%	6.0%	8.1%	
Health Factors					14
Health Behaviors					11
Adult smoking	26%	19-36%	14%	22%	
Adult obesity	29%	23-36%	25%	26%	
Physical inactivity	26%	20-33%	21%	24%	
Excessive drinking			8%	19%	
Motor vehicle crash death rate			12	17	
Sexually transmitted infections	95		84	386	
Teen birth rate	44	34-55	22	53	
Clinical Care					16
Uninsured	31%	28-34%	11%	25%	
Primary care physicians	2,097:1		631:1	1,153:1	
Preventable hospital stays	60	39-82	49	59	
Diabetic screening	72%	52-93%	89%	76%	
Mammography screening	59%	37-80%	74%	60%	
Social & Economic Factors					13
High school graduation	89%			70%	
Some college	40%	27-52%	68%	54%	
Unemployment	12.2%		5.4%	14.9%	
Children in poverty	22%	16-28%	13%	21%	
Inadequate social support	22%	15-32%	14%	23%	
Children in single-parent households	36%	20-52%	20%	34%	
Violent crime rate	693		73	728	
Physical Environment					11
Air pollution-particulate matter days	0		0	1	
Air pollution-ozone days	0		0	24	
Access to recreational facilities	0		16	7	
Limited access to healthy foods	6%		0%	4%	
Fast food restaurants	38%		25%	56%	

* 90th percentile, i.e., only 10% are better

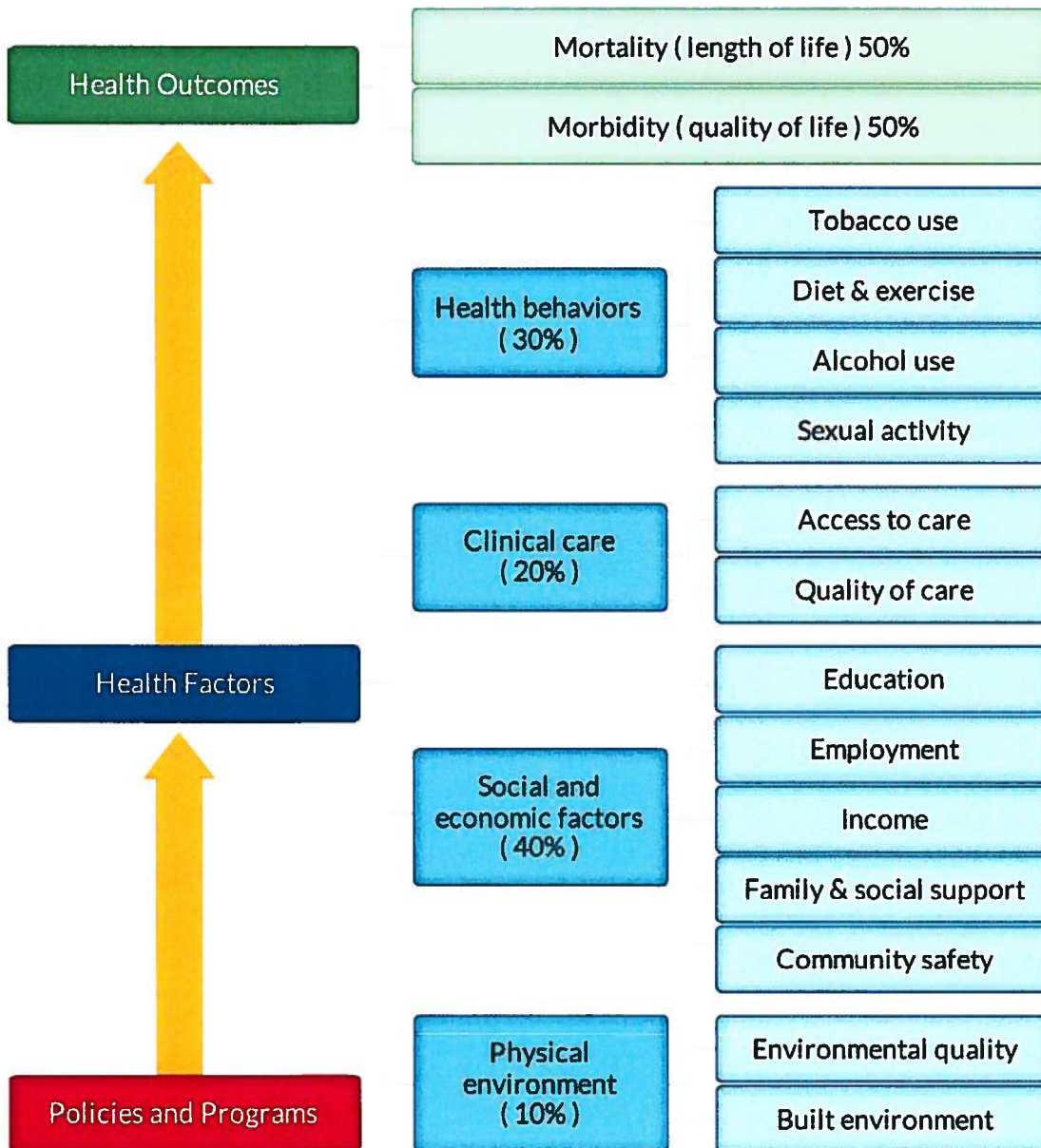
Note: Blank values reflect unreliable or missing data

2012

County Health Rankings

The 2012 *County Health Rankings* report ranks Nevada counties according to their summary measures of **health outcomes** and **health factors**. Counties also receive a rank for mortality, morbidity, health behaviors, clinical care, social and economic factors, and the physical environment. The figure below depicts the structure of the *Rankings* model; those having high ranks (e.g., 1 or 2) are estimated to be the “healthiest.”

Our summary **health outcomes** rankings are based on an equal weighting of mortality and morbidity measures. The summary **health factors** rankings are based on weighted scores of four types of factors: behavioral, clinical, social and economic, and environmental. The weights for the factors (shown in parentheses in the figure) are based upon a review of the literature and expert input, but represent just one way of combining these factors.

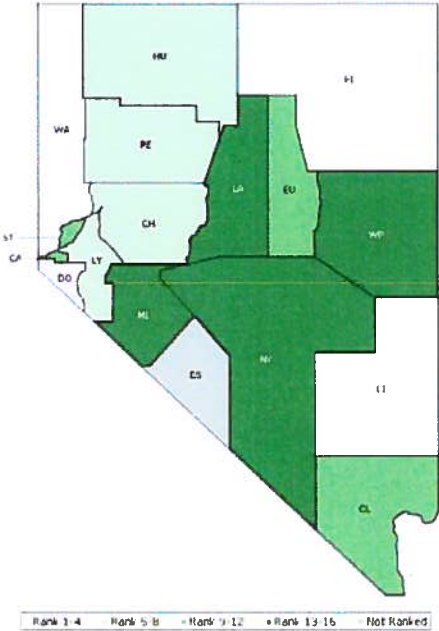


County Health Rankings model ©2012 UWPHI

The maps on this page and the next display Nevada’s counties divided into groups by health rank. Maps help locate the healthiest and least healthy counties in the state. The lighter colors indicate better

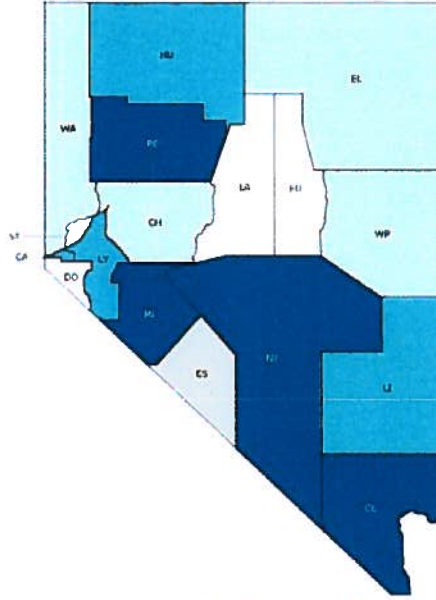
performance in the respective summary rankings. The green map shows the distribution of summary health outcomes. The blue displays the distribution of the summary rank for health factors.

HEALTH OUTCOMES



County	Rank	County	Rank	County	Rank	County	Rank
Carson City	12	Esmeralda	NR	Lyon	5	Washoe	4
Churchill	7	Eureka	11	Mineral	16	White Pine	13
Clark	10	Humboldt	8	Nye	15		
Douglas	1	Lander	14	Pershing	6		
Elko	2	Lincoln	3	Storey	9		

HEALTH FACTORS



Rank 1-4 Rank 5-8 Rank 9-12 Rank 13-16 Not Ranked

County	Rank	County	Rank	County	Rank	County	Rank
Carson City	9	Esmeralda	NR	Lyon	12	Washoe	5
Churchill	8	Eureka	3	Mineral	16	White Pine	6
Clark	13	Humboldt	11	Nye	15		
Douglas	1	Lander	2	Pershing	14		
Elko	7	Lincoln	10	Storey	4		

Summary Health Outcomes & Health Factors Rankings

Counties receive two summary ranks:

- Health Outcomes
- Health Factors

Health outcomes represent how healthy a county is while health factors represent what influences the health of the county.

Each of these ranks represents a weighted summary of a number of measures.

Rank	Health Outcomes	Rank	Health Factors
1	Douglas	1	Douglas
2	Elko	2	Lander
3	Lincoln	3	Eureka
4	Washoe	4	Storey
5	Lyon	5	Washoe
6	Pershing	6	White Pine
7	Churchill	7	Elko
8	Humboldt	8	Churchill
9	Storey	9	Carson City
10	Clark	10	Lincoln
11	Eureka	11	Humboldt
12	Carson City	12	Lyon
13	White Pine	13	Clark
14	Lander	14	Pershing
15	Nye	15	Nye
16	Mineral	16	Mineral

Not Ranked: Esmeralda

2012 County Health Rankings: Measures, Data Sources, and Years of Data

	Measure	Data Source	Years of Data
HEALTH OUTCOMES			
Mortality	Premature death	National Center for Health Statistics	2006-2008
Morbidity	Poor or fair health	Behavioral Risk Factor Surveillance System	2004-2010
	Poor physical health days	Behavioral Risk Factor Surveillance System	2004-2010
	Poor mental health days	Behavioral Risk Factor Surveillance System	2004-2010
	Low birthweight	National Center for Health Statistics	2002-2008
HEALTH FACTORS			
HEALTH BEHAVIORS			
Tobacco Use	Adult smoking	Behavioral Risk Factor Surveillance System	2004-2010
Diet and Exercise	Adult obesity	National Center for Chronic Disease Prevention and Health Promotion	2009
	Physical inactivity	National Center for Chronic Disease Prevention and Health Promotion	2009
Alcohol Use	Excessive drinking	Behavioral Risk Factor Surveillance System	2004-2010
	Motor vehicle crash death rate	National Center for Health Statistics	2002-2008
Sexual Activity	Sexually transmitted infections	National Center for Hepatitis, HIV, STD and TB Prevention	2009
	Teen birth rate	National Center for Health Statistics	2002-2008
CLINICAL CARE			
Access to Care	Uninsured	Small Area Health Insurance Estimates	2009
	Primary care physicians	Health Resources & Services Administration	2009
Quality of Care	Preventable hospital stays	Medicare/Dartmouth Institute	2009
	Diabetic screening	Medicare/Dartmouth Institute	2009
	Mammography screening	Medicare/Dartmouth Institute	2009
SOCIAL AND ECONOMIC FACTORS			
Education	High school graduation	National Center for Education Statistics and state-specific sources ¹	2008-2010
	Some college	American Community Survey	2006-2010
Employment	Unemployment	Bureau of Labor Statistics	2010
Income	Children in poverty	Small Area Income and Poverty Estimates	2010
Family and Social Support	Inadequate social support	Behavioral Risk Factor Surveillance System	2006-2010
	Children in single-parent households	American Community Survey	2006-2010
Community Safety	Violent crime rate ²	Federal Bureau of Investigation	2007-2009
PHYSICAL ENVIRONMENT			
Environmental Quality³	Air pollution-particulate matter days	U.S. Environmental Protection Agency	2007
	Air pollution-ozone days	U.S. Environmental Protection Agency	2007
Built Environment	Access to recreational facilities	Census County Business Patterns	2009
	Limited access to healthy foods ⁴	U.S. Department of Agriculture	2006
	Fast food restaurants	Census County Business Patterns	2009

¹ NCES used for AK, AL, AR, CA, CT, FL, HI, ID, KY, MT, ND, NJ, OK, SD and TN

² State data source for IL.

³ Not available for AK and HI.

⁴ Access to Healthy Foods (2009) from Census Zip Code Business Patterns for AK and HI.