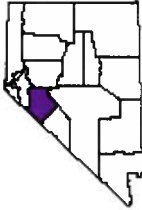


Mineral County, NV in Profile



Mineral County is one of 17 counties and county equivalent cities in Nevada. It has 3,756.4 sq. miles in land area and a population density of 1.2 per square mile. On the most recent census form, 95.6% of the population reported only one race, with 4.1% of these reporting African-American. The population of this county is 9.1% Hispanic (of any race). The average household size is 2.10 persons compared to an average family size of 2.70 persons.

In 2010 retail trade was the largest of 20 major sectors. It had an average wage per job of \$25,715. Per capita income grew by 10.3% between 1999 and 2009 (adjusted for inflation).

People & Income Overview (By Place of Residence)	Value	Rank in State	Industry Overview (2010) (By Place of Work)	Value	Rank in State
Population (2011)	4,593	14	Covered Employment	1,566	15
Growth (%) since 2010 Census	-3.8%	17	Avg wage per job	\$40,628	12
Households (2010)	2,240	11	Manufacturing - % all jobs in County	D	N/A
Labor Force (persons) (2010)	2,323	14	Avg wage per job	D	N/A
Unemployment Rate (2010)	16.1	3	Transportation & Warehousing - % all jobs in County	0.8%	12
Per Capita Personal Income (2009)	\$33,827	11	Avg wage per job	\$29,685	16
Median Household Income (2010)	\$39,940	17	Health Care, Social Assist. - % all jobs in County	1.1%	8
Poverty Rate (2010)	15.4	3	Avg wage per job	\$66,225	1
H.S. Diploma or More - % of Adults 25+ (2010 ACS 5yr)	86.3	7	Finance and Insurance - % all jobs in County	D	N/A
Bachelor's Deg. or More - % of Adults 25+ (2010 ACS 5yr)	8.2	17	Avg wage per job	D	N/A

Population Over Time	Number	Rank in State	Percent of State	State
2011	4,593	14	0.17%	2,723,322
2010	4,772	14	0.18%	2,700,551
2000	5,071	13	0.25%	1,998,257
1990	6,475	11	0.54%	1,201,675
1980	6,217	11	0.78%	800,508
2000 to 2010 % change	-5.9%	16		35.1%
1990 to 2010 % change	-26.3%	16		124.7%
1980 to 2010 % change	-23.2%	18		237.4%

Source: US Census Bureau

Components of Population Change in 2010/2011	Number	Rank in State	Percent of State	State
Net Domestic Migration (chg 2010/2011)	-141	13		-8,008
Net International Migration (chg 2010/2011)	5	10	0.05%	9,679
Natural Increase (births minus deaths)	-49	15	-0.28%	17,399
Births	50	12	0.14%	36,772
Deaths	99	10	0.51%	19,373

Source: US Census Bureau

Population Estimates by Age in 2010	Number	Rank in State	Pct Dist. in County	Pct Dist. in State
Preschool (0 to 4)	222	14	4.7%	6.9%
School Age (5 to 17)	652	14	13.7%	17.7%
College Age (18 to 24)	362	14	7.6%	9.2%
Young Adult (25 to 44)	857	14	18.0%	28.5%
Older Adult(45 to 64)	1,603	14	33.6%	25.6%
Older (65 plus)	1,076	11	22.5%	12.0%
Median Age	49.2	3		Median Age = 36.3

Sources: US Census Bureau; Median age calculated by the IBRC.

Population Estimates by Race and Hispanic Origin in 2010	Number	Rank in State	Pct Dist. in County	Pct Dist. in State
American Ind. or Alaskan Native Alone	742	8	15.5%	1.2%
Asian Alone	53	13	1.1%	7.2%
Black Alone	196	11	4.1%	8.1%
Native Hawaiian and Other Pac. Isl. Alone	6	14	0.1%	0.6%
White Alone	3,462	15	72.5%	66.2%
Two or More Race Groups	212	11	4.4%	4.7%
Hispanic or Latino (can be of any race)				
Non-Hispanic or Latino	4,336	14	90.9%	73.5%
Hispanic or Latino	436	13	9.1%	26.5%

Source: US Census Bureau

Hispanic or Latino Population in 2010 (can be of any race)	Number	Rank in State	Pct Dist. in County	Pct Dist. in State
Hispanic	436	13	9.1%	26.5%
Mexican	328	13	6.9%	20.0%
Cuban	1	16	0.0%	0.8%
Puerto Rican	9	13	0.2%	0.8%
Other	98	13	2.1%	4.9%
White, Not Hispanic (reporting white alone)	3,271	15	68.5%	54.1%

Source: US Census Bureau, American Community Survey, 5 Year Estimates

Households in 2010	Number	Rank in State	Pct All Hhlds in County	Pct All Hhlds in State
Total Households	2,240	11	100.0%	100.0%
Family Households	1,258	14	56.2%	65.3%
Married with Children	209	15	9.3%	19.6%
Married without Children	665	14	29.7%	26.4%
Single Parents	203	13	9.1%	10.4%
Other	181	11	8.1%	8.9%
Non-family Households	982	11	43.8%	34.7%
Living Alone	821	11	36.7%	25.7%
Average Household Size	2.10	16		
Average Family Household Size	2.70	16		

Source: US Census Bureau/font>

Housing Units in 2010	Number	Rank in State	Pct All HU in County	Pct All HU in State
2009 Housing Units (Census Estimate)	2,870	11		

Total Housing Units	2,830	11	100.0%	100.0%
Occupied	2,240	11	79.2%	85.7%
Owner Occupied	1,520	12	53.7%	50.4%
Renter Occupied	720	11	25.4%	35.3%
Vacant	590	12	20.8%	14.3%
For seasonal or recreational use	63	15	2.2%	2.8%

Source: US Census Bureau

Residential Building Permits in 2010	Units	Pct Dist. in County	Pct Dist. in State	Cost (\$000)
Total Permits Filed	7	100.0%	100.0%	\$506
Single Family	5	71.4%	83.2%	\$361
Two Family	2	28.6%	0.3%	\$145
Three & Four Family	0	0.0%	2.2%	\$0
Five Families and More	0	0.0%	14.3%	\$0

Source: US Census Bureau

Median Income	Number	Rank in State	Percent of State
Median household income in 2010	\$39,940	17	78.3%
Median household income in 2000 (adj. for inflation)	\$41,907	17	74.0%
5-year percent change 2000 to 2010	-4.7%	8	

Source: US Census Bureau

Per Capita Personal Income	Number	Rank in State	Percent of State
Per capita income - 2009	\$33,827	11	89.8%
Per capita income - 1999 (adj. for inflation)	\$30,655	10	80.3%
Per capita income - 1989 (adj. for inflation)	\$27,186	15	82.0%
Per capita income - 1979 (adj. for inflation)	\$24,598	13	78.2%
10-year % change	10.3%	8	
20-year % change	24.4%	6	
30-year % change	37.5%	6	

Source: US Bureau of Economic Analysis

Personal Income in 2009 (\$000)	Number	5-Year % Change (adj*)	Rank in % Change
Total Earnings by Place of Work	\$96,137	-3.0%	13
Minus: Contributions for government social insurance	\$9,835	0.0%	12
Personal contributions for government social insurance	\$5,586	5.0%	13
Employer contributions for government social insurance	\$4,249	-5.8%	12
Plus: Adjustment for residence	-\$512	-89.1%	13
Equals: Net Earnings by Place of Residence	\$85,790	1.4%	10
Plus: Dividends, rent, interest	\$24,899	10.5%	6
Plus: Transfer payments	\$47,014	30.1%	15
Equals: Personal Income by Place of Residence	\$157,703	10.1%	10

Source: US Bureau of Economic Analysis (*adj = Adjusted for Inflation)

Poverty Estimates	Number	Rank in State	5-Year % Change	Rank in % Change
Poverty rate in 2010	15.4	3	--	--
In 2000	16.3	1	-5.5%	15
Poverty rate for children under 18 in 2010	24.6	2	--	--
In 2000	25.1	1	-2.0%	14

Source: US Census Bureau

Labor Force Annual Averages in 2010	Number	% of State	State	Rank in State
Total Labor Force	2,323	0.17%	1,350,309	14
5-year % change	10.9%	-	9.9%	8
10-year % change	-1.3%	-	27.0%	16
Employed	1,948	0.17%	1,149,537	14
5-year % change	-0.9%	-	-2.0%	8
10-year % change	-9.8%	-	13.2%	16
Unemployed	375	0.19%	200,772	11
5-year % change	190.7%	-	265.6%	9
10-year % change	92.3%	-	321.6%	15
Unemployment Rate	16.1	108.05%	14.9	3
5-year % change	159.7%	-	231.1%	9
10-year % change	94.0%	-	231.1%	14

Source: US Bureau of Labor Statistics

Educational Attainment: ACS 2005-2010	Number	Percent of Population 25+	Rank of % in State	State % of Population 25+
Total Population 25 and Older	3,793	100.0%		100.0%
Less Than 9th Grade	157	4.1%	10	6.3%
9th to 12th, No Diploma	364	9.6%	9	9.4%
High School Graduate (incl. equiv.)	1,812	47.8%	1	29.7%
Some College, No Degree	900	23.7%	16	25.5%
Associate Degree	249	6.6%	13	7.3%
Bachelor's Degree	247	6.5%	17	14.4%
Graduate, Professional or Doctorate Degree	64	1.7%	17	7.4%

Source: US Census Bureau, American Community Survey, 2005-2009 5-Year Estimates

Educational Attainment: Census 2000	Number	Percent of Population 25+	Rank of % in State	State % of Population 25+
Total Population 25 and Older	3,527	100.0%		100.0%
Less Than 9th Grade	166	4.7%	12	6.4%
9th to 12th, No Diploma	641	18.2%	1	12.9%
High School Graduate (incl. equiv.)	1,277	36.2%	6	29.3%
Some College, No Degree	920	26.1%	14	27.0%
Associate Degree	167	4.7%	15	6.2%
Bachelor's Degree	251	7.1%	14	12.1%
Graduate or Professional Degree	105	3.0%	14	6.1%

Source: US Census Bureau

Workers Living in County in 2000	Number	Rank in State	Pct Dist. in County	Rank of Pct Dist.
Total	2,029	13	100.0%	
Working in County	1,802	12	88.8%	6
Working Elsewhere	227	14	11.2%	12

Source: US Census Bureau (Includes only domestic commuting for workers over 16 years old.)

People Working in County in 2000	Number	Rank in State	Pct Dist. in County	Rank of Pct Dist.
Total	1,952	14	100.0%	
Living in County	1,802	12	92.3%	3
Living Elsewhere	150	16	7.7%	15

Source: US Census Bureau (Includes only domestic commuting for workers over 16 years old.)

Commuting Flows in 2000	Number	Rank in State	Pct Dist.
Gross Flow (Living Elsewhere + Working Elsewhere)	377	16	100%
Net Flow (Living Elsewhere - Working Elsewhere)	-77	9	
Largest Single Inflow : Churchill County, NV	53		14.1%
Largest Single Outflow : Churchill County, NV	79		21.0%

Source: US Census Bureau (Includes only domestic commuting for workers over 16 years old.)

Annual Covered Employment and Wages Over Time (NAICS)	Establishments	Jobs	Average Wage Per Job (*adj)	Rank in State	Pct of State Avg Wage
2010	112	1,566	\$40,628	13	95.6%
2009	110	1,699	\$37,522	15	86.4%
2008	107	1,816	\$38,330	14	88.0%
2007	108	1,746	\$36,873	16	83.2%
2006	109	1,675	\$37,201	14	85.8%
2005	106	1,708	\$38,150	13	88.1%
2004	95	1,734	\$40,357	11	94.2%
2003	91	1,700	\$39,659	11	94.7%
2002	93	1,720	\$36,724	15	89.1%
2001	94	1,733	\$36,490	14	89.5%
2000	102	1,809	\$36,752	13	89.9%
10-Year Change	10	-243	\$3,876		
10-Year Percent Change	9.8%	-13.4%	10.5%		

Source: US Bureau of Labor Statistics(BLS)

*adj = Adjusted for Inflation; D = Non-Discloseable Data; N/A = Not Available; Note: Average wage may not match published numbers due to rounding.

Annual Industry Distribution of Jobs and Avg. Wage in 2010 (NAICS)	Establishments	Jobs	Pct Dist. in County	Annual Average Wage Per Job	Rank in State
Total Covered Employment and Wages	112	1,566	100.0%	\$40,628	12
Private	84	947	60.5%	\$41,991	7
Agri., forestry, hunting	1	D	D	D	N/A
Mining	6	24	1.5%	\$97,375	2
Construction	10	29	1.9%	\$27,048	11
Manufacturing	1	D	D	D	N/A
Wholesale trade	2	D	D	D	N/A
Retail trade	13	89	5.7%	\$25,715	7
Transportation, warehousing	8	13	0.8%	\$29,685	16
Utilities	2	D	D	D	N/A
Information	2	D	D	D	N/A
Finance and Insurance	3	D	D	D	N/A
Real Estate, rental, leasing	5	D	D	D	N/A
Professional, technical services	7	20	1.3%	\$90,180	1
Mgmt. of companies, enterprises	N/A	N/A	N/A	N/A	N/A
Administrative, waste services	8	D	D	D	N/A
Educational services	2	D	D	D	N/A
Health care, social assistance	10	18	1.1%	\$66,225	1
Arts, entertainment, recreation	1	D	D	D	N/A

Accommodation and food services	14	D	D	D	N/A
Other services, exc. public admin.	4	10	0.6%	\$21,468	<u>14</u>
Public administration	12	64	4.1%	\$68,082	<u>1</u>

Source: US Bureau of Labor Statistics(BLS)

D = Not shown to avoid disclosure of confidential information.

N/A = This item is not available.

Note: Average wage may not match published numbers due to rounding.

BEA Major Sectors (NAICS) in 2009 (by place of work)		Earnings (\$000)	Avg Earnings Per Job	Rank in State	Jobs	Pct Dist. in County	Pct Dist. in State
	Total by place of work	\$96,137	\$39,924	<u>11</u>	2,408	100.0%	100.0%
	Wage and Salary	\$66,071	\$37,562	<u>14</u>	1,759	73.0%	77.8%
	Proprietors	\$11,670	\$17,982	<u>5</u>	649	27.0%	22.2%
	Farm	\$713	\$10,186	<u>9</u>	70	2.9%	0.2%
	Nonfarm	\$10,957	\$18,924	<u>3</u>	579	24.0%	22.1%
	Farm	\$764	\$10,324	<u>12</u>	74	3.1%	0.3%
	Nonfarm	\$95,373	\$40,862	<u>11</u>	2,334	96.9%	99.7%
	Private	\$61,362	\$35,842	<u>10</u>	1,712	71.1%	88.6%
	Forestry, fishing, etc. *	\$249	N/A	N/A	D	D	0.1%
21	Mining	D	N/A	N/A	D	D	1.1%
22	Utilities	D	N/A	N/A	D	D	0.3%
23	Construction	D	N/A	N/A	D	D	6.5%
31-33	Manufacturing	D	N/A	N/A	D	D	2.9%
42	Wholesale Trade	D	N/A	N/A	D	D	2.6%
44-45	Retail Trade	\$3,888	\$22,217	<u>11</u>	175	7.3%	10.1%
48 49	Trans. and warehousing	D	N/A	N/A	D	D	3.5%
51	Information	D	N/A	N/A	D	D	1.2%
52	Finance and insurance	\$3,541	\$54,477	<u>1</u>	65	2.7%	7.0%
53	Real Estate and rental and leasing	\$1,280	\$22,456	<u>1</u>	57	2.4%	6.3%
54	Professional, technical services	\$2,472	\$41,200	<u>8</u>	60	2.5%	5.3%
55	Management of companies, enterprises	\$0	N/A	N/A	0	0.0%	1.3%
56	Administrative and waste services	D	N/A	N/A	D	D	6.0%
61	Educational services	D	N/A	N/A	D	D	0.9%
62	Health care, social assistance	D	N/A	N/A	D	D	6.9%
71	Arts, entertainment, and recreation	D	N/A	N/A	D	D	3.2%
72	Accommodation and food services	D	N/A	N/A	D	D	19.0%
81	Other services, exc. public admin.	D	N/A	N/A	D	D	4.3%
NA	Gov. and gov. enterprises	\$34,011	\$54,680	<u>13</u>	622	25.8%	11.1%

Source: US Bureau of Economic Analysis(BEA)

D = Not shown to avoid disclosure of confidential information, but the estimates for this item are included in the totals.

L = Less than 10 jobs, but the estimates for this item are included in the totals.

N/A = Not available or not applicable.

* = "Other" consists of the number of jobs held by U.S. residents employed by international organizations and foreign embassies and consulates in the United States.

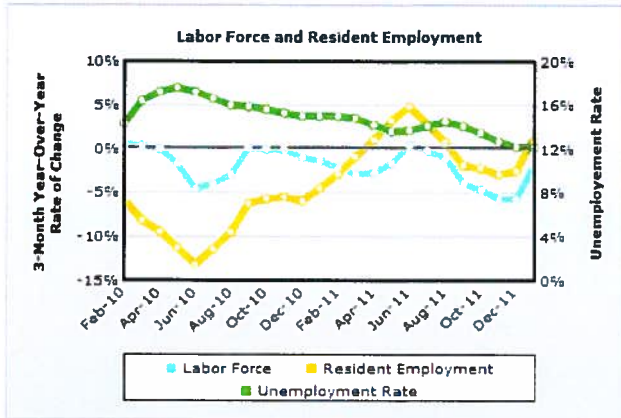
[Home](#) | [About STATS America](#) | [Contact Us](#) | [Report a Problem](#) |



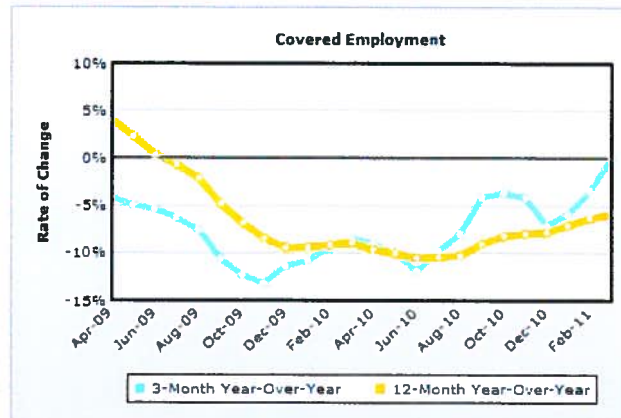
STATS America is a service of the Indiana Business Research Center at Indiana University's Kelley School of Business: www.ibrc.indiana.edu. It was developed with support from the U.S. Department of Commerce, Economic Development Administration and Indiana University.

Updated: April 06, 2012 at 12:27

ECONOMIC CONDITIONS



Data Source: U.S. Bureau of Labor Statistics



Data Source: U.S. Bureau of Labor Statistics

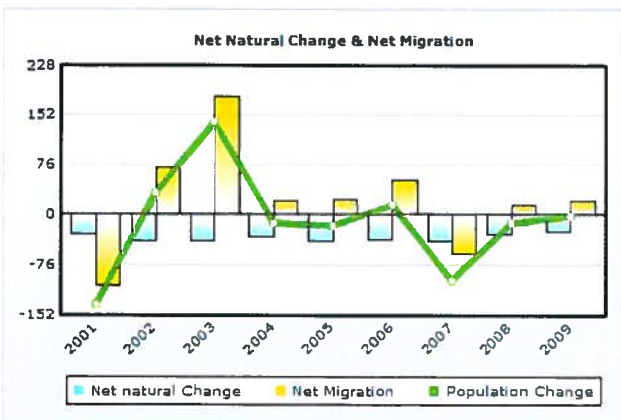
	3-Month Average			3-Month Year-Over-Year Change			
	January 2010	January 2011	January 2012	January 2010 to January 2011		January 2011 to January 2012	
	Number	Percent	Number	Number	Percent	Number	Percent
Labor Force	2,352	12.1	2,322	15	12.2	-30	-1.3
Resident Employment	2,068	12.1	1,974	15	12.2	-94	-4.5
Unemployment Rate (%)				n/a	n/a	n/a	n/a
	March 2009	March 2010	March 2011	March 2009 to March 2010		March 2010 to March 2011	
Covered Employment	1,684	1,543	1,545	-141	-8.4	2	0.1

Data Source: U.S. Bureau of Labor Statistics

POPULATION & HOUSEHOLDS

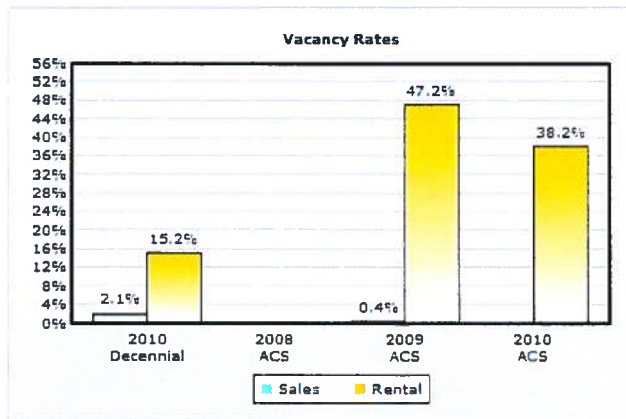
	Decennial Census				ACS & Population Estimates Program						
	April 2000	April 2010	Average Annual Change 2000 to 2010		July 2008	July 2009	July 2010	2008 to 2009		2009 to 2010	
			Number	Percent				Number	Percent	Number	Percent
Population	5,071	4,772	-30	-0.6	4,781	4,769	4,768	-12	-0.3	-1	0
Households	2,197	2,240	4	0.2	0	2,497	2,331	2,497	0	-166	-6.6

Data Source: 1 - 2000 Census; 2010 Census; U.S. Census Bureau Population Estimates
2 - 2000 Census; 2010 Census; 2008, 2009 and 2010 American Community Surveys (5 - Year)

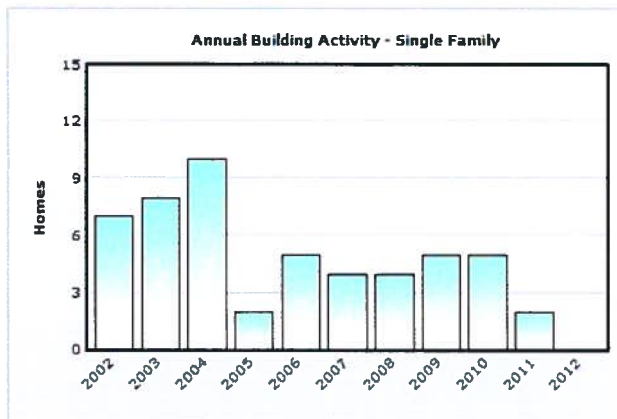


Data Source: U.S. Census Bureau Population Estimates

Notes: 1 - Values in chart reflect July year-to-year changes
2 - Net Migration includes residual population change



Data Source: 2010 Census; 2008, 2009 and 2010 American Community Surveys (5 - Year)

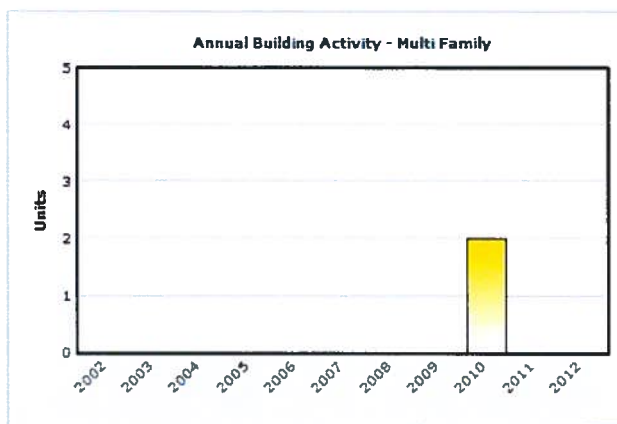


Data Source: U.S. Census Bureau, Building Permits Survey; adjustments by analyst

Note: Data for 2011 and 2012 is preliminary, through January 2012

Housing Inventory by Tenure				
	2010	2008	2009	2010
	Decennial	ACS	ACS	ACS
Total Housing Units	2,830	n/a	3,558	3,289
Occupied	2,240	n/a	2,497	2,331
Owners	1,520	n/a	2,089	1,820
% Owners	67.9	n/a	83.7	78.1
Renters	720	n/a	408	511
% Renters	32.1	n/a	16.3	21.9
Total Vacant	590	n/a	1,061	958
Available for Sale	33	n/a	9	n/a
Available for Rent	129	n/a	364	316
Other Vacant	428	n/a	688	n/a

Data Source: 2010 Census; 2008, 2009 and 2010 American Community Surveys (5 - Year)



Data Source: U.S. Census Bureau, Building Permits Survey; adjustments by analyst

Note: Data for 2011 and 2012 is preliminary, through January 2012

Mineral County, Nevada

US Census Quick Facts

<http://quickfacts.census.gov>

People QuickFacts	Mineral County	Nevada
Population, 2011 estimate	NA	2,723,322
Population, 2010	4,772	2,700,551
Population, percent change, 2000 to 2010	-5.9%	35.1%
Population, 2000	5,071	1,998,257
Persons under 5 years, percent, 2010	4.7%	6.9%
Persons under 18 years, percent, 2010	18.3%	24.6%
Persons 65 years and over, percent, 2010	22.5%	12.0%
Female persons, percent, 2010	50.8%	49.5%
White persons, percent, 2010 (a)	72.5%	66.2%
Black persons, percent, 2010 (a)	4.1%	8.1%
American Indian and Alaska Native persons, percent, 2010 (a)	15.5%	1.2%
Asian persons, percent, 2010 (a)	1.1%	7.2%
Native Hawaiian and Other Pacific Islander, percent, 2010 (a)	0.1%	0.6%
Persons reporting two or more races, percent, 2010	4.4%	4.7%
Persons of Hispanic or Latino origin, percent, 2010 (b)	9.1%	26.5%
White persons not Hispanic, percent, 2010	68.5%	54.1%
Living in same house 1 year & over, 2006-2010	88.0%	78.2%
Foreign born persons, percent, 2006-2010	4.5%	19.3%
Language other than English spoken at home, pct age 5+, 2006-2010	7.1%	28.2%
High school graduates, percent of persons age 25+, 2006-2010	86.3%	84.3%
Bachelor's degree or higher, pct of persons age 25+, 2006-2010	8.2%	21.8%
Veterans, 2006-2010	720	234,081
Mean travel time to work (minutes), workers age 16+, 2006-2010	10.5	23.6
Housing units, 2010	2,830	1,173,814
Homeownership rate, 2006-2010	78.1%	60.1%
Housing units in multi-unit structures, percent, 2006-2010	12.2%	29.4%
Median value of owner-occupied housing units, 2006-2010	\$114,200	\$254,200
Households, 2006-2010	2,331	979,621
Persons per household, 2006-2010	2.00	2.65
Per capita money income in past 12 months (2010 dollars) 2006-2010	\$23,226	\$27,589
Median household income 2006-2010	\$35,446	\$55,726
Persons below poverty level, percent, 2006-2010	19.1%	11.9%

Business QuickFacts	Mineral County	Nevada
Private nonfarm establishments, 2009	65	59,785 ³
Private nonfarm employment, 2009	0 ²	1,042,166 ³
Private nonfarm employment, percent change 2000-2009	NA	15.4% ³
Nonemployer establishments, 2009	228	166,864
Total number of firms, 2007	342	221,260
Black-owned firms, percent, 2007	F	3.9%
American Indian- and Alaska Native-owned firms, percent, 2007	F	0.8%
Asian-owned firms, percent, 2007	F	7.9%
Native Hawaiian and Other Pacific Islander-owned firms, percent, 2007	F	0.3%
Hispanic-owned firms, percent, 2007	F	8.1%
Women-owned firms, percent, 2007	32.5%	28.6%
Manufacturers shipments, 2007 (\$1000)	0 ¹	15,735,787
Merchant wholesaler sales, 2007 (\$1000)	D	19,255,893
Retail sales, 2007 (\$1000)	D	37,433,983
Retail sales per capita, 2007	D	\$14,579
Accommodation and food services sales, 2007 (\$1000)	20,183	28,815,533
Building permits, 2010	7	6,443
Federal spending, 2009	102,081	19,893,713 ³
Geography QuickFacts	Mineral County	Nevada
Land area in square miles, 2010	3,752.84	109,781.18
Persons per square mile, 2010	1.3	24.6
FIPS Code	021	32
Metropolitan or Micropolitan Statistical Area	None	

1: Counties with 500 employees or less are excluded.

2: Represents 500-999 employees.

3: Includes data not distributed by county.

Population estimates for counties will be available in April, 2012 and for cities in June, 2012.

(a) Includes persons reporting only one race.

(b) Hispanics may be of any race, so also are included in applicable race categories.

D: Suppressed to avoid disclosure of confidential information

F: Fewer than 100 firms

FN: Footnote on this item for this area in place of data

NA: Not available

S: Suppressed; does not meet publication standards

X: Not applicable

Z: Value greater than zero but less than half unit of measure shown

Source U.S. Census Bureau: State and County QuickFacts. Data derived from Population Estimates, American Community Survey, Census of Population and Housing, State and County Housing Unit Estimates, County Business Patterns, Nonemployer Statistics, Economic Census, Survey of Business Owners, Building Permits, Consolidated Federal Funds Report

Last Revised: Tuesday, 31-Jan-2012 16:54:31 EST



	Mineral County	Error Margin	National Benchmark*	Nevada	Rank (of 16)
Health Outcomes					16
Mortality					16
Premature death	15,655	11,459-19,851	5,466	7,927	
Morbidity					16
Poor or fair health	22%	15-31%	10%	18%	
Poor physical health days	4.1	2.9-5.3	2.6	3.7	
Poor mental health days	5.2	3.3-7.0	2.3	3.7	
Low birthweight	8.5%	5.4-11.6%	6.0%	8.1%	
Health Factors					16
Health Behaviors					16
Adult smoking	33%	25-41%	14%	22%	
Adult obesity	31%	25-38%	25%	26%	
Physical inactivity	30%	24-37%	21%	24%	
Excessive drinking	21%	14-29%	8%	19%	
Motor vehicle crash death rate	59	33-85	12	17	
Sexually transmitted infections	384		84	386	
Teen birth rate	42	30-55	22	53	
Clinical Care					14
Uninsured	23%	21-26%	11%	25%	
Primary care physicians	930:1		631:1	1,153:1	
Preventable hospital stays	126	101-150	49	59	
Diabetic screening	82%	64-100%	89%	76%	
Mammography screening	57%	40-74%	74%	60%	
Social & Economic Factors					16
High school graduation	77%			70%	
Some college	40%	0-88%	68%	54%	
Unemployment	16.1%		5.4%	14.9%	
Children in poverty	25%	17-32%	13%	21%	
Inadequate social support	30%	22-39%	14%	23%	
Children in single-parent households	33%	0-67%	20%	34%	
Violent crime rate	440		73	728	
Physical Environment					12
Air pollution-particulate matter days	0		0	1	
Air pollution-ozone days	0		0	24	
Access to recreational facilities	0		16	7	
Limited access to healthy foods	14%		0%	4%	
Fast food restaurants	33%		25%	56%	

* 90th percentile, i.e., only 10% are better

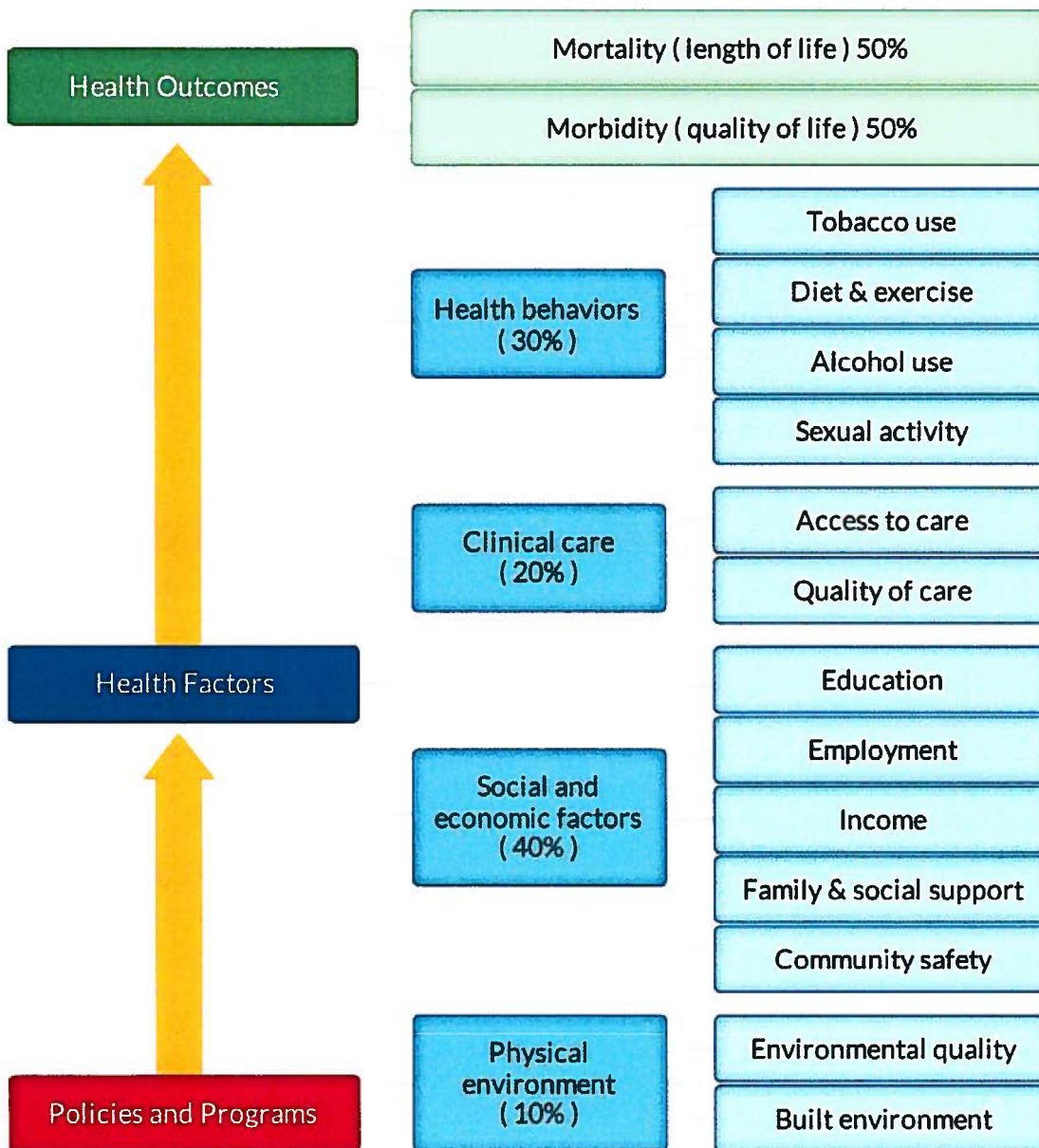
2012

Note: Blank values reflect unreliable or missing data

County Health Rankings

The 2012 *County Health Rankings* report ranks Nevada counties according to their summary measures of **health outcomes** and **health factors**. Counties also receive a rank for mortality, morbidity, health behaviors, clinical care, social and economic factors, and the physical environment. The figure below depicts the structure of the *Rankings* model; those having high ranks (e.g., 1 or 2) are estimated to be the “healthiest.”

Our summary **health outcomes** rankings are based on an equal weighting of mortality and morbidity measures. The summary **health factors** rankings are based on weighted scores of four types of factors: behavioral, clinical, social and economic, and environmental. The weights for the factors (shown in parentheses in the figure) are based upon a review of the literature and expert input, but represent just one way of combining these factors.

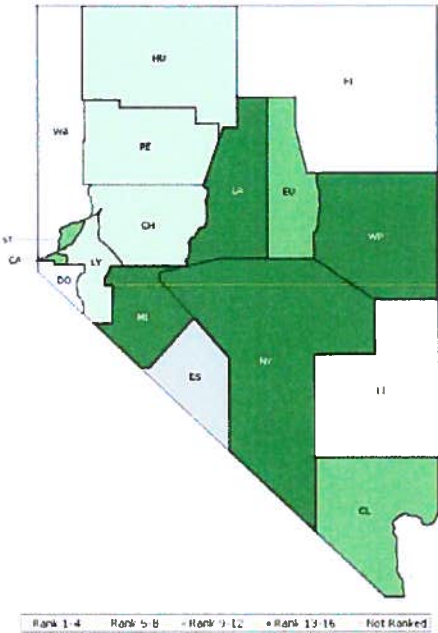


County Health Rankings model ©2012 UWPHI

The maps on this page and the next display Nevada’s counties divided into groups by health rank. Maps help locate the healthiest and least healthy counties in the state. The lighter colors indicate better

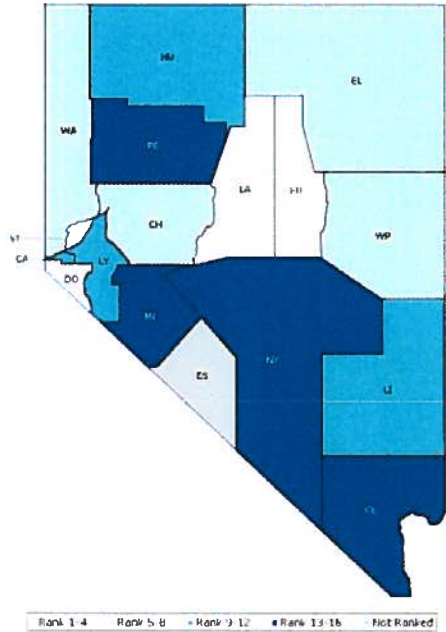
performance in the respective summary rankings. The green map shows the distribution of summary health outcomes. The blue displays the distribution of the summary rank for health factors.

HEALTH OUTCOMES



County	Rank	County	Rank	County	Rank	County	Rank
Carson City	12	Esmeralda	NR	Lyon	5	Washoe	4
Churchill	7	Eureka	11	Mineral	16	White Pine	13
Clark	10	Humboldt	8	Nye	15		
Douglas	1	Lander	14	Pershing	6		
Elko	2	Lincoln	3	Storey	9		

HEALTH FACTORS



County	Rank	County	Rank	County	Rank	County	Rank
Carson City	9	Esmeralda	NR	Lyon	12	Washoe	5
Churchill	8	Eureka	3	Mineral	16	White Pine	6
Clark	13	Humboldt	11	Nye	15		
Douglas	1	Lander	2	Pershing	14		
Elko	7	Lincoln	10	Storey	4		

Summary Health Outcomes & Health Factors Rankings

Counties receive two summary ranks:

- Health Outcomes
- Health Factors

Each of these ranks represents a weighted summary of a number of measures.

Health outcomes represent how healthy a county is while health factors represent what influences the health of the county.

Rank	Health Outcomes	Rank	Health Factors
1	Douglas	1	Douglas
2	Elko	2	Lander
3	Lincoln	3	Eureka
4	Washoe	4	Storey
5	Lyon	5	Washoe
6	Pershing	6	White Pine
7	Churchill	7	Elko
8	Humboldt	8	Churchill
9	Storey	9	Carson City
10	Clark	10	Lincoln
11	Eureka	11	Humboldt
12	Carson City	12	Lyon
13	White Pine	13	Clark
14	Lander	14	Pershing
15	Nye	15	Nye
16	Mineral	16	Mineral

Not Ranked: Esmeralda

2012 County Health Rankings: Measures, Data Sources, and Years of Data

	Measure	Data Source	Years of Data
HEALTH OUTCOMES			
Mortality	Premature death	National Center for Health Statistics	2006-2008
Morbidity	Poor or fair health	Behavioral Risk Factor Surveillance System	2004-2010
	Poor physical health days	Behavioral Risk Factor Surveillance System	2004-2010
	Poor mental health days	Behavioral Risk Factor Surveillance System	2004-2010
	Low birthweight	National Center for Health Statistics	2002-2008
HEALTH FACTORS			
HEALTH BEHAVIORS			
Tobacco Use	Adult smoking	Behavioral Risk Factor Surveillance System	2004-2010
Diet and Exercise	Adult obesity	National Center for Chronic Disease Prevention and Health Promotion	2009
	Physical inactivity	National Center for Chronic Disease Prevention and Health Promotion	2009
Alcohol Use	Excessive drinking	Behavioral Risk Factor Surveillance System	2004-2010
	Motor vehicle crash death rate	National Center for Health Statistics	2002-2008
Sexual Activity	Sexually transmitted infections	National Center for Hepatitis, HIV, STD and TB Prevention	2009
	Teen birth rate	National Center for Health Statistics	2002-2008
CLINICAL CARE			
Access to Care	Uninsured	Small Area Health Insurance Estimates	2009
	Primary care physicians	Health Resources & Services Administration	2009
Quality of Care	Preventable hospital stays	Medicare/Dartmouth Institute	2009
	Diabetic screening	Medicare/Dartmouth Institute	2009
	Mammography screening	Medicare/Dartmouth Institute	2009
SOCIAL AND ECONOMIC FACTORS			
Education	High school graduation	National Center for Education Statistics and state-specific sources ¹	2008-2010
	Some college	American Community Survey	2006-2010
Employment	Unemployment	Bureau of Labor Statistics	2010
Income	Children in poverty	Small Area Income and Poverty Estimates	2010
Family and Social Support	Inadequate social support	Behavioral Risk Factor Surveillance System	2006-2010
	Children in single-parent households	American Community Survey	2006-2010
Community Safety	Violent crime rate ²	Federal Bureau of Investigation	2007-2009
PHYSICAL ENVIRONMENT			
Environmental Quality ³	Air pollution-particulate matter days	U.S. Environmental Protection Agency	2007
	Air pollution-ozone days	U.S. Environmental Protection Agency	2007
Built Environment	Access to recreational facilities	Census County Business Patterns	2009
	Limited access to healthy foods ⁴	U.S. Department of Agriculture	2006
	Fast food restaurants	Census County Business Patterns	2009

¹ NCES used for AK, AL, AR, CA, CT, FL, HI, ID, KY, MT, ND, NJ, OK, SD and TN

² State data source for IL.

³ Not available for AK and HI.

⁴ Access to Healthy Foods (2009) from Census Zip Code Business Patterns for AK and HI.