

**Lyon County, NV in Profile**

Part of: Fernley NV, Micropolitan Area  
 Part of: Reno-Sparks-Fernley NV, Combined Statistical Area



**Lyon County** is one of 17 counties and county equivalent cities in Nevada. It has 1,993.7 sq. miles in land area and a population density of 26.0 per square mile. On the most recent census form, 96.3% of the population reported only one race, with 0.8% of these reporting African-American. The population of this county is 14.8% Hispanic (of any race). The average household size is 2.60 persons compared to an average family size of 3.00 persons.

In 2010 manufacturing was the largest of 20 major sectors. It had an average wage per job of \$45,370. Per capita income declined by 4.8% between 1999 and 2009 (adjusted for inflation).

People & Income Overview (By Place of Residence)	Value	Rank in State	Industry Overview (2010) (By Place of Work)	Value	Rank in State
Population (2011)	51,871	<a href="#">4</a>	Covered Employment	11,059	<a href="#">6</a>
Growth (%) since 2010 Census	-0.2%	<a href="#">8</a>	Avg wage per job	\$35,163	<a href="#">16</a>
Households (2010)	19,808	<a href="#">4</a>	Manufacturing - % all jobs in County	18.0%	<a href="#">1</a>
Labor Force (persons) (2010)	22,815	<a href="#">5</a>	Avg wage per job	\$45,370	<a href="#">7</a>
Unemployment Rate (2010)	19.7	<a href="#">1</a>	Transportation & Warehousing - % all jobs in County	4.6%	<a href="#">5</a>
Per Capita Personal Income (2009)	\$27,300	<a href="#">15</a>	Avg wage per job	\$38,430	<a href="#">13</a>
Median Household Income (2010)	\$47,108	<a href="#">12</a>	Health Care, Social Assist. - % all jobs in County	0.2%	<a href="#">10</a>
Poverty Rate (2010)	11.4	<a href="#">11</a>	Avg wage per job	\$55,296	<a href="#">2</a>
H.S. Diploma or More - % of Adults 25+ (2010 ACS 5yr)	85.8	<a href="#">8</a>	Finance and Insurance - % all jobs in County	1.3%	<a href="#">9</a>
Bachelor's Deg. or More - % of Adults 25+ (2010 ACS 5yr)	12.7	<a href="#">14</a>	Avg wage per job	\$33,688	<a href="#">8</a>

Population Over Time	Number	Rank in State	Percent of State	State
2011	51,871	<a href="#">4</a>	1.90%	2,723,322
2010	51,980	<a href="#">4</a>	1.92%	2,700,551
2000	34,501	<a href="#">6</a>	1.73%	1,998,257
1990	20,001	<a href="#">6</a>	1.66%	1,201,675
1980	13,594	<a href="#">7</a>	1.70%	800,508
2000 to 2010 % change	50.7%	<a href="#">2</a>		35.1%
1990 to 2010 % change	159.9%	<a href="#">3</a>		124.7%
1980 to 2010 % change	282.4%	<a href="#">4</a>		237.4%

Source: US Census Bureau

Components of Population Change in 2010/2011	Number	Rank in State	Percent of State	State
Net Domestic Migration (chg 2010/2011)	-492	<a href="#">16</a>		-8,008
Net International Migration (chg 2010/2011)	142	<a href="#">3</a>	1.47%	9,679
Natural Increase (births minus deaths)	105	<a href="#">5</a>	0.60%	17,399
Births	583	<a href="#">5</a>	1.59%	36,772
Deaths	478	<a href="#">5</a>	2.47%	19,373

Source: US Census Bureau

Population Estimates by Age in 2010	Number	Rank in State	Pct Dist. in County	Pct Dist. in State
Preschool (0 to 4)	3,404	<a href="#">4</a>	6.5%	6.9%
School Age (5 to 17)	9,524	<a href="#">4</a>	18.3%	17.7%
College Age (18 to 24)	3,532	<a href="#">5</a>	6.8%	9.2%
Young Adult (25 to 44)	12,205	<a href="#">5</a>	23.5%	28.5%
Older Adult(45 to 64)	15,100	<a href="#">5</a>	29.0%	25.6%
Older (65 plus)	8,215	<a href="#">6</a>	15.8%	12.0%
Median Age	40.9	<a href="#">9</a>		Median Age = 36.3

Sources: US Census Bureau; Median age calculated by the IBRC.

Population Estimates by Race and Hispanic Origin in 2010	Number	Rank in State	Pct Dist. in County	Pct Dist. in State
American Ind. or Alaskan Native Alone	1,286	<a href="#">5</a>	2.5%	1.2%
Asian Alone	725	<a href="#">4</a>	1.4%	7.2%
Black Alone	417	<a href="#">5</a>	0.8%	8.1%
Native Hawaiian and Other Pac. Isl. Alone	130	<a href="#">4</a>	0.3%	0.6%
White Alone	44,164	<a href="#">4</a>	85.0%	66.2%
Two or More Race Groups	1,938	<a href="#">3</a>	3.7%	4.7%
Hispanic or Latino (can be of any race)				
Non-Hispanic or Latino	44,306	<a href="#">3</a>	85.2%	73.5%
Hispanic or Latino	7,674	<a href="#">5</a>	14.8%	26.5%

Source: US Census Bureau

Hispanic or Latino Population in 2010 (can be of any race)	Number	Rank in State	Pct Dist. in County	Pct Dist. in State
Hispanic	7,674	<a href="#">5</a>	14.8%	26.5%
Mexican	6,191	<a href="#">5</a>	11.9%	20.0%
Cuban	34	<a href="#">6</a>	0.1%	0.8%
Puerto Rican	228	<a href="#">3</a>	0.4%	0.8%
Other	1,221	<a href="#">4</a>	2.3%	4.9%
White, Not Hispanic (reporting white alone)	40,634	<a href="#">3</a>	78.2%	54.1%

Source: US Census Bureau, American Community Survey, 5 Year Estimates

Households in 2010	Number	Rank in State	Pct All Hhlds in County	Pct All Hhlds in State
Total Households	19,808	<a href="#">4</a>	100.0%	100.0%
Family Households	14,137	<a href="#">3</a>	71.4%	65.3%
Married with Children	4,070	<a href="#">4</a>	20.5%	19.6%
Married without Children	6,893	<a href="#">4</a>	34.8%	26.4%
Single Parents	1,747	<a href="#">4</a>	8.8%	10.4%
Other	1,427	<a href="#">4</a>	7.2%	8.9%
Non-family Households	5,671	<a href="#">6</a>	28.6%	34.7%
Living Alone	4,375	<a href="#">6</a>	22.1%	25.7%
Average Household Size	2.60	<a href="#">3</a>		
Average Family Household Size	3.00	<a href="#">8</a>		

Source: US Census Bureau/font>

Housing Units in 2010	Number	Rank in State	Pct All HU in County	Pct All HU in State
2009 Housing Units (Census Estimate)	18,243	<a href="#">6</a>		

Total Housing Units	22,547	<a href="#">5</a>	100.0%	100.0%
Occupied	19,808	<a href="#">4</a>	87.9%	85.7%
Owner Occupied	14,379	<a href="#">3</a>	63.8%	50.4%
Renter Occupied	5,429	<a href="#">6</a>	24.1%	35.3%
Vacant	2,739	<a href="#">5</a>	12.1%	14.3%
For seasonal or recreational use	320	<a href="#">7</a>	1.4%	2.8%

Source: US Census Bureau

Residential Building Permits in 2010	Units	Pct Dist. in County	Pct Dist. in State	Cost (\$000)
Total Permits Filed	53	100.0%	100.0%	\$9,321
Single Family	53	100.0%	83.2%	\$9,321
Two Family	0	0.0%	0.3%	\$0
Three & Four Family	0	0.0%	2.2%	\$0
Five Families and More	0	0.0%	14.3%	\$0

Source: US Census Bureau

Median Income	Number	Rank in State	Percent of State
Median household income in 2010	\$47,108	<a href="#">12</a>	92.4%
Median household income in 2000 (adj. for inflation)	\$52,703	<a href="#">11</a>	93.1%
5-year percent change 2000 to 2010	-10.6%	<a href="#">13</a>	

Source: US Census Bureau

Per Capita Personal Income	Number	Rank in State	Percent of State
Per capita income - 2009	\$27,300	<a href="#">15</a>	72.5%
Per capita income - 1999 (adj. for inflation)	\$28,689	<a href="#">15</a>	75.1%
Per capita income - 1989 (adj. for inflation)	\$30,243	<a href="#">9</a>	91.2%
Per capita income - 1979 (adj. for inflation)	\$28,138	<a href="#">10</a>	89.5%
10-year % change	-4.8%	<a href="#">18</a>	
20-year % change	-9.7%	<a href="#">16</a>	
30-year % change	-3.0%	<a href="#">17</a>	

Source: US Bureau of Economic Analysis

Personal Income in 2009 (\$000)	Number	5-Year % Change (adj*)	Rank in % Change
<b>Total Earnings by Place of Work</b>	\$590,167	4.7%	<a href="#">8</a>
Minus: Contributions for government social insurance	\$65,548	12.6%	<a href="#">8</a>
Personal contributions for government social insurance	\$36,951	19.8%	<a href="#">7</a>
Employer contributions for government social insurance	\$28,597	4.4%	<a href="#">8</a>
Plus: Adjustment for residence	\$304,082	15.6%	<a href="#">7</a>
Equals: <b>Net Earnings by Place of Residence</b>	\$828,701	7.8%	<a href="#">6</a>
Plus: Dividends, rent, interest	\$267,895	18.6%	<a href="#">3</a>
Plus: Transfer payments	\$340,521	67.1%	<a href="#">2</a>
Equals: <b>Personal Income by Place of Residence</b>	\$1,437,117	19.9%	<a href="#">3</a>

Source: US Bureau of Economic Analysis (\*adj = Adjusted for Inflation)

Poverty Estimates	Number	Rank in State	5-Year % Change	Rank in % Change
Poverty rate in 2010	11.4	<a href="#">11</a>	--	--
In 2000	10.3	<a href="#">8</a>	10.7%	<a href="#">10</a>
Poverty rate for children under 18 in 2010	15.9	<a href="#">10</a>	--	--
In 2000	15.4	<a href="#">6</a>	3.2%	<a href="#">13</a>

Source: US Census Bureau

<b>Labor Force Annual Averages in 2010</b>	Number	% of State	State	Rank in State
Total Labor Force	22,815	1.69%	1,350,309	<u>5</u>
5-year % change	11.8%	-	9.9%	<u>6</u>
10-year % change	27.3%	-	27.0%	<u>4</u>
Employed	18,330	1.59%	1,149,537	<u>6</u>
5-year % change	-4.3%	-	-2.0%	<u>13</u>
10-year % change	8.6%	-	13.2%	<u>7</u>
Unemployed	4,485	2.23%	200,772	<u>3</u>
5-year % change	258.2%	-	265.6%	<u>2</u>
10-year % change	329.6%	-	321.6%	<u>4</u>
Unemployment Rate	19.7	132.21%	14.9	<u>1</u>
5-year % change	223.0%	-	231.1%	<u>4</u>
10-year % change	239.7%	-	231.1%	<u>5</u>

Source: US Bureau of Labor Statistics

<b>Educational Attainment: ACS 2005-2010</b>	Number	Percent of Population 25+	Rank of % in State	State % of Population 25+
Total Population 25 and Older	34,574	100.0%		100.0%
Less Than 9th Grade	1,188	3.4%	<u>14</u>	6.3%
9th to 12th, No Diploma	3,714	10.7%	<u>6</u>	9.4%
High School Graduate (incl. equiv.)	12,735	36.8%	<u>5</u>	29.7%
Some College, No Degree	9,670	28.0%	<u>4</u>	25.5%
Associate Degree	2,882	8.3%	<u>5</u>	7.3%
Bachelor's Degree	2,938	8.5%	<u>14</u>	14.4%
Graduate, Professional or Doctorate Degree	1,447	4.2%	<u>10</u>	7.4%

Source: US Census Bureau, American Community Survey, 2005-2009 5-Year Estimates

<b>Educational Attainment: Census 2000</b>	Number	Percent of Population 25+	Rank of % in State	State % of Population 25+
Total Population 25 and Older	22,863	100.0%		100.0%
Less Than 9th Grade	1,199	5.2%	<u>9</u>	6.4%
9th to 12th, No Diploma	3,029	13.2%	<u>9</u>	12.9%
High School Graduate (incl. equiv.)	7,533	32.9%	<u>8</u>	29.3%
Some College, No Degree	6,988	30.6%	<u>4</u>	27.0%
Associate Degree	1,531	6.7%	<u>6</u>	6.2%
Bachelor's Degree	1,955	8.6%	<u>11</u>	12.1%
Graduate or Professional Degree	628	2.7%	<u>16</u>	6.1%

Source: US Census Bureau

<b>Workers Living in County in 2000</b>	Number	Rank in State	Pct Dist. in County	Rank of Pct Dist.
Total	15,141	<u>6</u>	100.0%	
Working in County	7,866	<u>8</u>	52.0%	<u>16</u>
Working Elsewhere	7,275	<u>2</u>	48.0%	<u>2</u>

Source: US Census Bureau (Includes only domestic commuting for workers over 16 years old.)

<b>People Working in County in 2000</b>	Number	Rank in State	Pct Dist. in County	Rank of Pct Dist.
Total	10,142	<u>8</u>	100.0%	
Living in County	7,866	<u>8</u>	77.6%	<u>13</u>
Living Elsewhere	2,276	<u>5</u>	22.4%	<u>5</u>

Source: US Census Bureau (Includes only domestic commuting for workers over 16 years old.)

<b>Commuting Flows in 2000</b>	Number	Rank in State	Pct Dist.
Gross Flow (Living Elsewhere + Working Elsewhere)	9,551	<a href="#">5</a>	100%
Net Flow (Living Elsewhere - Working Elsewhere)	-4,999	<a href="#">17</a>	
Largest Single Inflow : <a href="#">Churchill County, NV</a>	663		6.9%
Largest Single Outflow : <a href="#">Carson City County, NV</a>	2,949		30.9%

Source: US Census Bureau (Includes only domestic commuting for workers over 16 years old.)

<b>Annual Covered Employment and Wages Over Time (NAICS)</b>	Establishments	Jobs	Average Wage Per Job (*adj)	Rank in State	Pct of State Avg Wage
2010	1,004	11,059	\$35,163	<a href="#">17</a>	82.7%
2009	1,094	11,341	\$35,461	<a href="#">17</a>	81.6%
2008	1,109	12,815	\$34,731	<a href="#">18</a>	79.8%
2007	1,082	13,248	\$36,091	<a href="#">17</a>	81.4%
2006	1,029	12,887	\$35,588	<a href="#">18</a>	82.1%
2005	924	12,221	\$35,218	<a href="#">18</a>	81.4%
2004	823	11,144	\$35,667	<a href="#">18</a>	83.3%
2003	717	11,512	\$33,386	<a href="#">18</a>	79.7%
2002	657	11,072	\$33,185	<a href="#">18</a>	80.5%
2001	649	11,023	\$32,926	<a href="#">18</a>	80.7%
2000	639	10,221	\$32,958	<a href="#">17</a>	80.6%
10-Year Change	365	838	\$2,205		
10-Year Percent Change	57.1%	8.2%	6.7%		

Source: US Bureau of Labor Statistics(BLS)

\*adj = Adjusted for Inflation; D = Non-Discloseable Data; N/A = Not Available; Note: Average wage may not match published numbers due to rounding.

<b>Annual Industry Distribution of Jobs and Avg. Wage in 2010 (NAICS)</b>	Establishments	Jobs	Pct Dist. in County	Annual Average Wage Per Job	Rank in State
Total Covered Employment and Wages	1,004	11,059	100.0%	\$35,163	<a href="#">16</a>
Private	958	8,815	79.7%	\$34,230	<a href="#">15</a>
Agri., forestry, hunting	41	501	4.5%	\$31,925	<a href="#">2</a>
Mining	12	103	0.9%	\$50,720	<a href="#">10</a>
Construction	128	504	4.6%	\$38,688	<a href="#">8</a>
Manufacturing	104	1,987	18.0%	\$45,370	<a href="#">7</a>
Wholesale trade	62	244	2.2%	\$42,310	<a href="#">8</a>
Retail trade	94	1,875	17.0%	\$31,298	<a href="#">1</a>
Transportation, warehousing	50	513	4.6%	\$38,430	<a href="#">13</a>
Utilities	7	56	0.5%	\$78,112	<a href="#">6</a>
Information	9	25	0.2%	\$43,452	<a href="#">7</a>
Finance and Insurance	45	141	1.3%	\$33,688	<a href="#">8</a>
Real Estate, rental, leasing	43	121	1.1%	\$18,537	<a href="#">9</a>
Professional, technical services	83	298	2.7%	\$43,923	<a href="#">11</a>
Mgmt. of companies, enterprises	10	30	0.3%	\$79,975	<a href="#">8</a>
Administrative, waste services	59	312	2.8%	\$26,292	<a href="#">8</a>
Educational services	4	D	D	D	N/A
Health care, social assistance	55	23	0.2%	\$55,296	<a href="#">2</a>
Arts, entertainment, recreation	37	695	6.3%	\$21,478	<a href="#">7</a>

Accommodation and food services	72	611	5.5%	\$13,189	<a href="#">12</a>
Other services, exc. public admin.	61	284	2.6%	\$26,468	<a href="#">11</a>
Public administration	25	771	7.0%	\$41,273	<a href="#">13</a>

Source: US Bureau of Labor Statistics(BLS)

D = Not shown to avoid disclosure of confidential information.

N/A = This item is not available.

Note: Average wage may not match published numbers due to rounding.

BEA Major Sectors (NAICS) in 2009 (by place of work)		Earnings (\$000)	Avg Earnings Per Job	Rank in State	Jobs	Pct Dist. in County	Pct Dist. in State
	Total by place of work	\$590,167	\$35,177	<a href="#">13</a>	16,777	100.0%	100.0%
	Wage and Salary	\$427,250	\$36,006	<a href="#">15</a>	11,866	70.7%	77.8%
	Proprietors	\$48,631	\$9,902	<a href="#">14</a>	4,911	29.3%	22.2%
	Farm	\$3,428	\$12,603	<a href="#">7</a>	272	1.6%	0.2%
	Nonfarm	\$45,203	\$9,744	<a href="#">12</a>	4,639	27.7%	22.1%
	Farm	\$23,808	\$34,960	<a href="#">7</a>	681	4.1%	0.3%
	Nonfarm	\$566,359	\$35,186	<a href="#">14</a>	16,096	95.9%	99.7%
	Private	\$436,591	\$31,845	<a href="#">14</a>	13,710	81.7%	88.6%
	Forestry, fishing, etc. *	\$10,929	\$54,373	<a href="#">1</a>	201	1.2%	0.1%
21	Mining	\$7,111	\$34,688	<a href="#">8</a>	205	1.2%	1.1%
22	Utilities	\$5,652	\$92,656	<a href="#">6</a>	61	0.4%	0.3%
23	Construction	\$34,233	\$35,697	<a href="#">7</a>	959	5.7%	6.5%
31-33	Manufacturing	\$120,724	\$56,999	<a href="#">6</a>	2,118	12.6%	2.9%
42	Wholesale Trade	\$25,565	\$42,751	<a href="#">8</a>	598	3.6%	2.6%
44-45	Retail Trade	\$76,390	\$32,617	<a href="#">1</a>	2,342	14.0%	10.1%
48 49	Trans. and warehousing	\$19,101	\$45,587	<a href="#">8</a>	419	2.5%	3.5%
51	Information	\$1,559	\$19,488	<a href="#">13</a>	80	0.5%	1.2%
52	Finance and insurance	\$6,696	\$12,043	<a href="#">11</a>	556	3.3%	7.0%
53	Real Estate and rental and leasing	\$5,243	\$5,484	<a href="#">12</a>	956	5.7%	6.3%
54	Professional, technical services	\$21,620	\$29,576	<a href="#">9</a>	731	4.4%	5.3%
55	Management of companies, enterprises	\$6,416	\$98,708	<a href="#">4</a>	65	0.4%	1.3%
56	Administrative and waste services	\$10,423	\$14,869	<a href="#">9</a>	701	4.2%	6.0%
61	Educational services	D	N/A	N/A	D	D	0.9%
62	Health care, social assistance	D	N/A	N/A	D	D	6.9%
71	Arts, entertainment, and recreation	\$22,147	\$23,070	<a href="#">5</a>	960	5.7%	3.2%
72	Accommodation and food services	\$11,491	\$15,424	<a href="#">11</a>	745	4.4%	19.0%
81	Other services, exc. public admin.	\$25,605	\$24,787	<a href="#">11</a>	1,033	6.2%	4.3%
NA	Gov. and gov. enterprises	\$129,768	\$54,387	<a href="#">15</a>	2,386	14.2%	11.1%

Source: US Bureau of Economic Analysis(BEA)

D = Not shown to avoid disclosure of confidential information, but the estimates for this item are included in the totals.

L = Less than 10 jobs, but the estimates for this item are included in the totals.

N/A = Not available or not applicable.

\* = "Other" consists of the number of jobs held by U.S. residents employed by international organizations and foreign embassies and consulates in the United States.

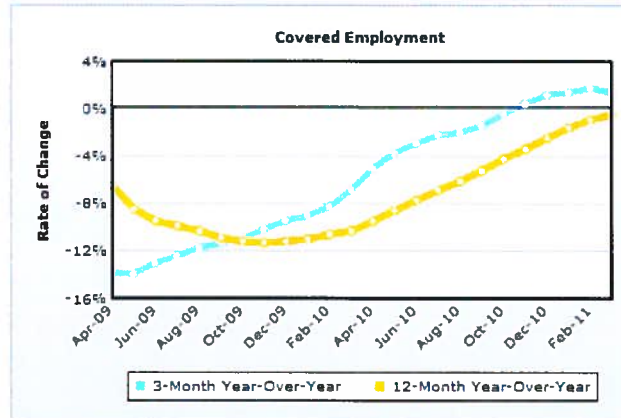
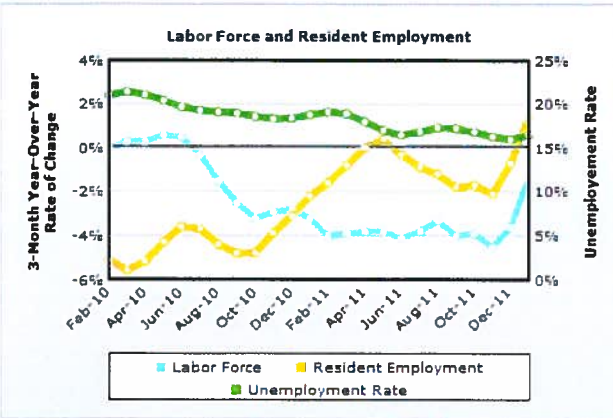
[Home](#) | [About STATS America](#) | [Contact Us](#) | [Report a Problem](#) |



STATS America is a service of the Indiana Business Research Center at Indiana University's Kelley School of Business: [www.ibrc.indiana.edu](http://www.ibrc.indiana.edu). It was developed with support from the U.S. Department of Commerce, Economic Development Administration and Indiana University.

**Updated: April 06, 2012 at 12:27**

## ECONOMIC CONDITIONS



Data Source: U.S. Bureau of Labor Statistics

Data Source: U.S. Bureau of Labor Statistics

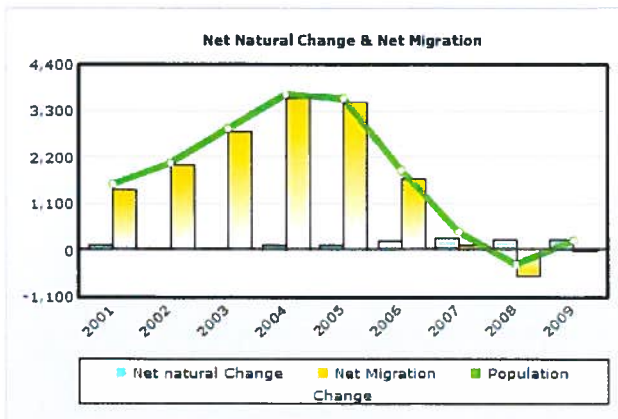
	3-Month Average			3-Month Year-Over-Year Change			
	January 2010	January 2011	January 2012	January 2010 to January 2011		January 2011 to January 2012	
	Number	Percent	Number	Number	Percent	Number	Percent
<b>Labor Force</b>	22,844	22,109	21,817	-735	-3.2	-292	-1.3
<b>Resident Employment</b>	18,352	17,952	18,210	-400	-2.2	258	1.4
<b>Unemployment Rate (%)</b>	19.7	18.8	16.5	n/a	n/a	n/a	n/a
	March 2009	March 2010	March 2011	March 2009 to March 2010		March 2010 to March 2011	
<b>Covered Employment</b>	11,374	10,602	10,752	-772	-6.8	150	1.4

Data Source: U.S. Bureau of Labor Statistics

## POPULATION & HOUSEHOLDS

	Decennial Census				ACS & Population Estimates Program						
	April 2000	April 2010	Average Annual Change 2000 to 2010		July 2008	July 2009	July 2010	2008 to 2009		2009 to 2010	
			Number	Percent				Number	Percent	Number	Percent
<b>Population</b>	34,501	51,980	1,748	5.1	52,156	51,819	52,049	-337	-0.6	230	0.4
<b>Households</b>	13,007	19,808	680	5.2	14,557	14,092	18,067	-465	-3.2	3,975	28.2

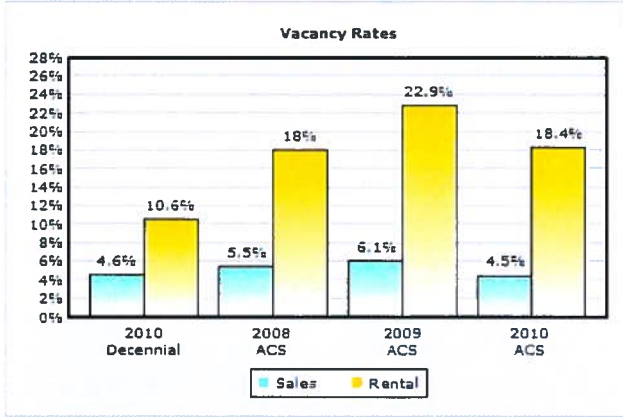
Data Source: 1 - 2000 Census; 2010 Census; U.S. Census Bureau Population Estimates  
2 - 2000 Census; 2010 Census; 2008, 2009 and 2010 American Community Surveys (3 - Year)



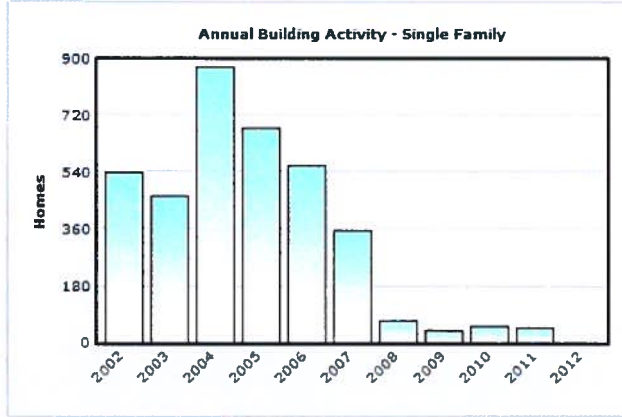
Data Source: U.S. Census Bureau Population Estimates

Notes: 1 - Values in chart reflect July year-to-year changes  
2 - Net Migration includes residual population change





Data Source: 2010 Census; 2008, 2009 and 2010 American Community Surveys (3 - Year)

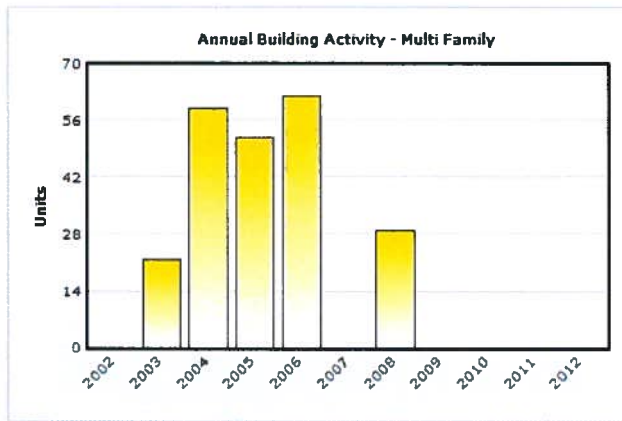


Data Source: U.S. Census Bureau, Building Permits Survey; adjustments by analyst

Note: Data for 2011 and 2012 is preliminary, through January 2012

Housing Inventory by Tenure				
	2010 Decennial	2008 ACS	2009 ACS	2010 ACS
<b>Total Housing Units</b>	22,547	17,856	18,133	22,176
<b>Occupied</b>	19,808	14,557	14,092	18,067
<b>Owners</b>	14,379	10,750	10,658	12,703
<b>% Owners</b>	72.6	73.8	75.6	70.3
<b>Renters</b>	5,429	3,807	3,434	5,364
<b>% Renters</b>	27.4	26.2	24.4	29.7
<b>Total Vacant</b>	2,739	3,299	4,041	4,109
<b>Available for Sale</b>	695	630	695	593
<b>Available for Rent</b>	646	838	1,021	1,211
<b>Other Vacant</b>	1,398	1,831	2,325	2,305

Data Source: 2010 Census; 2008, 2009 and 2010 American Community Surveys (3 - Year)



Data Source: U.S. Census Bureau, Building Permits Survey; adjustments by analyst

Note: Data for 2011 and 2012 is preliminary, through January 2012

## Lyon County, Nevada

US Census Quick Facts  
<http://quickfacts.census.gov>

People QuickFacts	Lyon County	Nevada
Population, 2011 estimate	NA	2,723,322
Population, 2010	51,980	2,700,551
Population, percent change, 2000 to 2010	50.7%	35.1%
Population, 2000	34,501	1,998,257
Persons under 5 years, percent, 2010	6.5%	6.9%
Persons under 18 years, percent, 2010	24.9%	24.6%
Persons 65 years and over, percent, 2010	15.8%	12.0%
Female persons, percent, 2010	49.6%	49.5%
White persons, percent, 2010 (a)	85.0%	66.2%
Black persons, percent, 2010 (a)	0.8%	8.1%
American Indian and Alaska Native persons, percent, 2010 (a)	2.5%	1.2%
Asian persons, percent, 2010 (a)	1.4%	7.2%
Native Hawaiian and Other Pacific Islander, percent, 2010 (a)	0.3%	0.6%
Persons reporting two or more races, percent, 2010	3.7%	4.7%
Persons of Hispanic or Latino origin, percent, 2010 (b)	14.8%	26.5%
White persons not Hispanic, percent, 2010	78.2%	54.1%
Living in same house 1 year & over, 2006-2010	82.3%	78.2%
Foreign born persons, percent, 2006-2010	6.3%	19.3%
Language other than English spoken at home, pct age 5+, 2006-2010	12.2%	28.2%
High school graduates, percent of persons age 25+, 2006-2010	85.8%	84.3%
Bachelor's degree or higher, pct of persons age 25+, 2006-2010	12.7%	21.8%
Veterans, 2006-2010	6,637	234,081
Mean travel time to work (minutes), workers age 16+, 2006-2010	26.4	23.6
Housing units, 2010	22,547	1,173,814
Homeownership rate, 2006-2010	72.2%	60.1%
Housing units in multi-unit structures, percent, 2006-2010	9.5%	29.4%
Median value of owner-occupied housing units, 2006-2010	\$185,000	\$254,200
Households, 2006-2010	17,766	979,621
Persons per household, 2006-2010	2.86	2.65
Per capita money income in past 12 months (2010 dollars) 2006-2010	\$21,041	\$27,589
Median household income 2006-2010	\$48,433	\$55,726
Persons below poverty level, percent, 2006-2010	12.8%	11.9%

<b>Business QuickFacts</b>	<b>Lyon County</b>	<b>Nevada</b>
Private nonfarm establishments, 2009	767	59,785 <sup>1</sup>
Private nonfarm employment, 2009	9,309	1,042,166 <sup>1</sup>
Private nonfarm employment, percent change 2000-2009	44.8%	15.4% <sup>1</sup>
Nonemployer establishments, 2009	2,531	166,864
Total number of firms, 2007	3,857	221,260
Black-owned firms, percent, 2007	1.6%	3.9%
American Indian- and Alaska Native-owned firms, percent, 2007	S	0.8%
Asian-owned firms, percent, 2007	S	7.9%
Native Hawaiian and Other Pacific Islander-owned firms, percent, 2007	F	0.3%
Hispanic-owned firms, percent, 2007	7.6%	8.1%
Women-owned firms, percent, 2007	29.1%	28.6%
Manufacturers shipments, 2007 (\$1000)	573,568	15,735,787
Merchant wholesaler sales, 2007 (\$1000)	D	19,255,893
Retail sales, 2007 (\$1000)	371,385	37,433,983
Retail sales per capita, 2007	\$7,100	\$14,579
Accommodation and food services sales, 2007 (\$1000)	35,040	28,815,533
Building permits, 2010	53	6,443
Federal spending, 2009	288,341	19,893,713 <sup>1</sup>
<b>Geography QuickFacts</b>	<b>Lyon County</b>	<b>Nevada</b>
Land area in square miles, 2010	2,001.19	109,781.18
Persons per square mile, 2010	26.0	24.6
FIPS Code	019	32
Metropolitan or Micropolitan Statistical Area	Fernley, NV Micro Area	

1: Includes data not distributed by county.

Population estimates for counties will be available in April, 2012 and for cities in June, 2012.

(a) Includes persons reporting only one race.

(b) Hispanics may be of any race, so also are included in applicable race categories.

D: Suppressed to avoid disclosure of confidential information

F: Fewer than 100 firms

FN: Footnote on this item for this area in place of data

NA: Not available

S: Suppressed; does not meet publication standards

X: Not applicable

Z: Value greater than zero but less than half unit of measure shown

Source U.S. Census Bureau: State and County QuickFacts. Data derived from Population Estimates, American Community Survey, Census of Population and Housing, State and County Housing Unit Estimates, County Business Patterns, Nonemployer Statistics, Economic Census, Survey of Business Owners, Building Permits, Consolidated Federal Funds Report

Last Revised: Tuesday, 31-Jan-2012 16:54:31 EST



**County Health  
Rankings & Roadmaps**  
A Healthier Nation, County by County

	Lyon County	Error Margin	National Benchmark*	Nevada	Rank (of 16)
<b>Health Outcomes</b>					<b>5</b>
<b>Mortality</b>					<b>4</b>
Premature death	7,434	6,650-8,217	5,466	7,927	
<b>Morbidity</b>					<b>10</b>
Poor or fair health	15%	13-18%	10%	18%	
Poor physical health days	4.2	3.6-4.7	2.6	3.7	
Poor mental health days	4.7	4.0-5.3	2.3	3.7	
Low birthweight	7.4%	6.6-8.1%	6.0%	8.1%	
<b>Health Factors</b>					<b>12</b>
<b>Health Behaviors</b>					<b>14</b>
Adult smoking	28%	25-31%	14%	22%	
Adult obesity	30%	27-34%	25%	26%	
Physical inactivity	27%	23-30%	21%	24%	
Excessive drinking	21%	18-24%	8%	19%	
Motor vehicle crash death rate	29	23-35	12	17	
Sexually transmitted infections	177		84	386	
Teen birth rate	42	38-46	22	53	
<b>Clinical Care</b>					<b>13</b>
Uninsured	22%	20-24%	11%	25%	
Primary care physicians	3,772:1		631:1	1,153:1	
Preventable hospital stays	71	64-79	49	59	
Diabetic screening	76%	69-83%	89%	76%	
Mammography screening	60%	53-66%	74%	60%	
<b>Social &amp; Economic Factors</b>					<b>10</b>
High school graduation	88%			70%	
Some college	53%	47-60%	68%	54%	
Unemployment	19.7%		5.4%	14.9%	
Children in poverty	16%	11-20%	13%	21%	
Inadequate social support	24%	21-27%	14%	23%	
Children in single-parent households	26%	19-33%	20%	34%	
Violent crime rate	179		73	728	
<b>Physical Environment</b>					<b>7</b>
Air pollution-particulate matter days	0		0	1	
Air pollution-ozone days	0		0	24	
Access to recreational facilities	15		16	7	
Limited access to healthy foods	5%		0%	4%	
Fast food restaurants	55%		25%	56%	

\* 90th percentile, i.e., only 10% are better

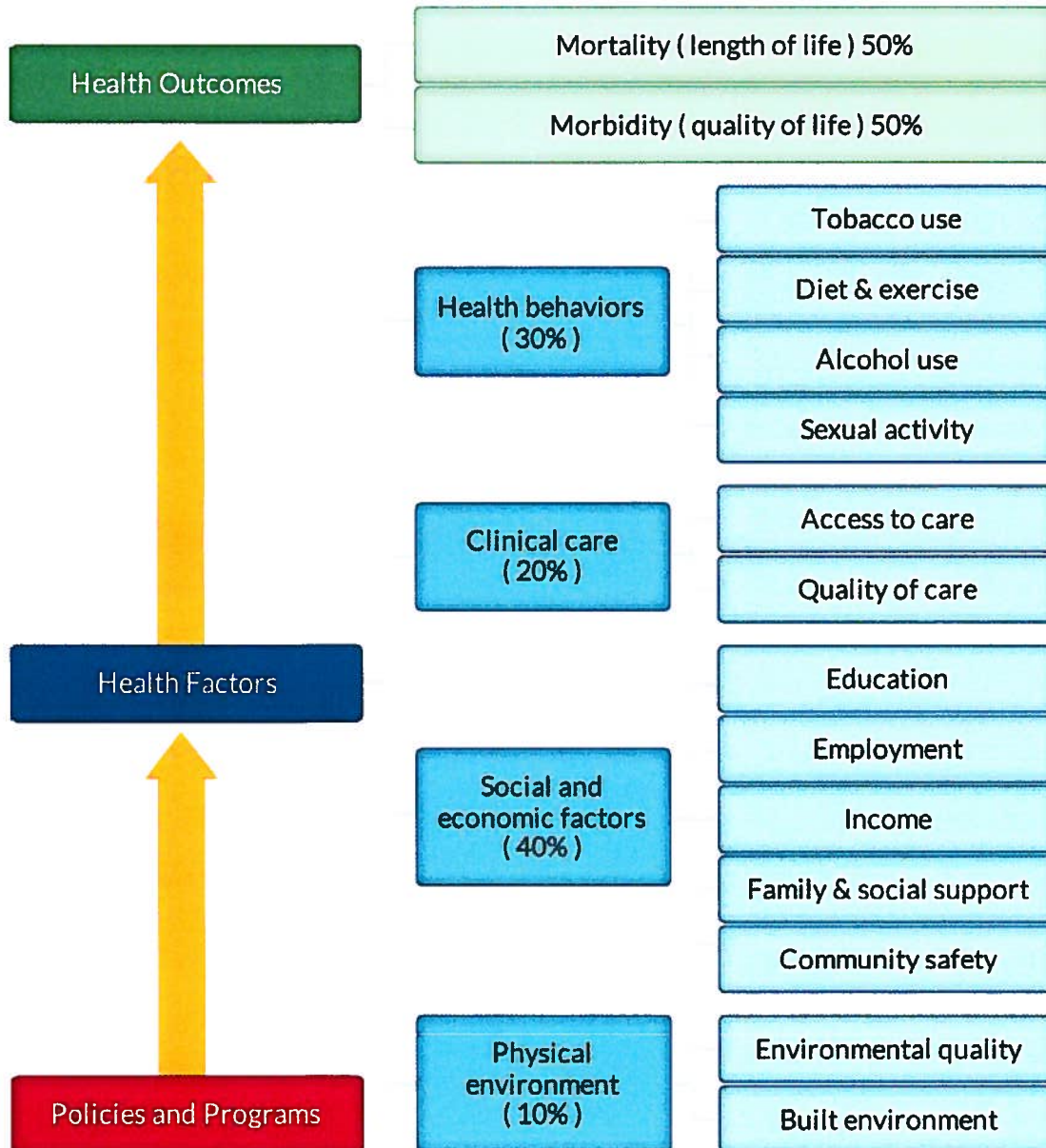
Note: Blank values reflect unreliable or missing data

2012

## County Health Rankings

The 2012 *County Health Rankings* report ranks Nevada counties according to their summary measures of **health outcomes** and **health factors**. Counties also receive a rank for mortality, morbidity, health behaviors, clinical care, social and economic factors, and the physical environment. The figure below depicts the structure of the *Rankings* model; those having high ranks (e.g., 1 or 2) are estimated to be the “healthiest.”

Our summary **health outcomes** rankings are based on an equal weighting of mortality and morbidity measures. The summary **health factors** rankings are based on weighted scores of four types of factors: behavioral, clinical, social and economic, and environmental. The weights for the factors (shown in parentheses in the figure) are based upon a review of the literature and expert input, but represent just one way of combining these factors.

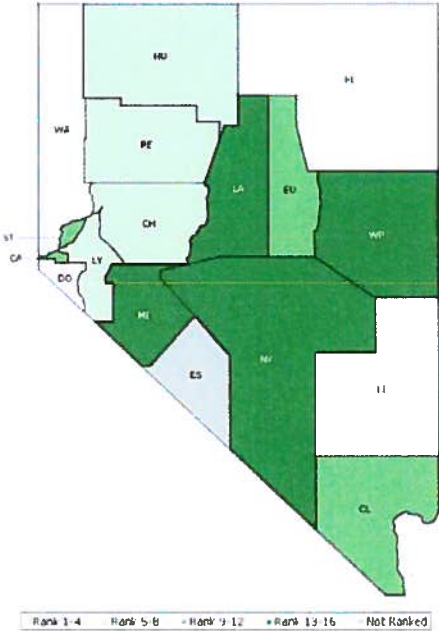


County Health Rankings model ©2012 UWPHI

The maps on this page and the next display Nevada’s counties divided into groups by health rank. Maps help locate the healthiest and least healthy counties in the state. The lighter colors indicate better

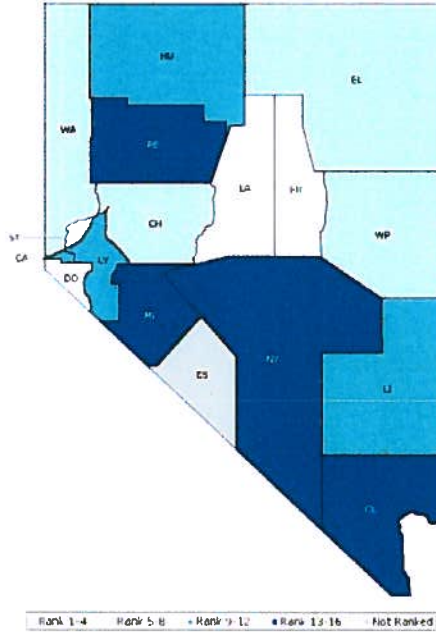
performance in the respective summary rankings. The green map shows the distribution of summary health outcomes. The blue displays the distribution of the summary rank for health factors.

**HEALTH OUTCOMES**



County	Rank	County	Rank	County	Rank	County	Rank
Carson City	12	Esmeralda	NR	Lyon	5	Washoe	4
Churchill	7	Eureka	11	Mineral	16	White Pine	13
Clark	10	Humboldt	8	Nye	15		
Douglas	1	Lander	14	Pershing	6		
Elko	2	Lincoln	3	Storey	9		

### HEALTH FACTORS



County	Rank	County	Rank	County	Rank	County	Rank
Carson City	9	Esmeralda	NR	Lyon	12	Washoe	5
Churchill	8	Eureka	3	Mineral	16	White Pine	6
Clark	13	Humboldt	11	Nye	15		
Douglas	1	Lander	2	Pershing	14		
Elko	7	Lincoln	10	Storey	4		

## Summary Health Outcomes & Health Factors Rankings

Counties receive two summary ranks:

- Health Outcomes
- Health Factors

Each of these ranks represents a weighted summary of a number of measures.

Health outcomes represent how healthy a county is while health factors represent what influences the health of the county.

Rank	Health Outcomes	Rank	Health Factors
1	Douglas	1	Douglas
2	Elko	2	Lander
3	Lincoln	3	Eureka
4	Washoe	4	Storey
5	Lyon	5	Washoe
6	Pershing	6	White Pine
7	Churchill	7	Elko
8	Humboldt	8	Churchill
9	Storey	9	Carson City
10	Clark	10	Lincoln
11	Eureka	11	Humboldt
12	Carson City	12	Lyon
13	White Pine	13	Clark
14	Lander	14	Pershing
15	Nye	15	Nye
16	Mineral	16	Mineral

**Not Ranked:** Esmeralda



## 2012 County Health Rankings: Measures, Data Sources, and Years of Data

	Measure	Data Source	Years of Data
<b>HEALTH OUTCOMES</b>			
<b>Mortality</b>	Premature death	National Center for Health Statistics	2006-2008
<b>Morbidity</b>	Poor or fair health	Behavioral Risk Factor Surveillance System	2004-2010
	Poor physical health days	Behavioral Risk Factor Surveillance System	2004-2010
	Poor mental health days	Behavioral Risk Factor Surveillance System	2004-2010
	Low birthweight	National Center for Health Statistics	2002-2008
<b>HEALTH FACTORS</b>			
<b>HEALTH BEHAVIORS</b>			
<b>Tobacco Use</b>	Adult smoking	Behavioral Risk Factor Surveillance System	2004-2010
<b>Diet and Exercise</b>	Adult obesity	National Center for Chronic Disease Prevention and Health Promotion	2009
	Physical inactivity	National Center for Chronic Disease Prevention and Health Promotion	2009
<b>Alcohol Use</b>	Excessive drinking	Behavioral Risk Factor Surveillance System	2004-2010
	Motor vehicle crash death rate	National Center for Health Statistics	2002-2008
<b>Sexual Activity</b>	Sexually transmitted infections	National Center for Hepatitis, HIV, STD and TB Prevention	2009
	Teen birth rate	National Center for Health Statistics	2002-2008
<b>CLINICAL CARE</b>			
<b>Access to Care</b>	Uninsured	Small Area Health Insurance Estimates	2009
	Primary care physicians	Health Resources & Services Administration	2009
<b>Quality of Care</b>	Preventable hospital stays	Medicare/Dartmouth Institute	2009
	Diabetic screening	Medicare/Dartmouth Institute	2009
	Mammography screening	Medicare/Dartmouth Institute	2009
<b>SOCIAL AND ECONOMIC FACTORS</b>			
<b>Education</b>	High school graduation	National Center for Education Statistics and state-specific sources <sup>1</sup>	2008-2010
	Some college	American Community Survey	2006-2010
<b>Employment</b>	Unemployment	Bureau of Labor Statistics	2010
<b>Income</b>	Children in poverty	Small Area Income and Poverty Estimates	2010
<b>Family and Social Support</b>	Inadequate social support	Behavioral Risk Factor Surveillance System	2006-2010
	Children in single-parent households	American Community Survey	2006-2010
<b>Community Safety</b>	Violent crime rate <sup>2</sup>	Federal Bureau of Investigation	2007-2009
<b>PHYSICAL ENVIRONMENT</b>			
<b>Environmental Quality</b> <sup>3</sup>	Air pollution-particulate matter days	U.S. Environmental Protection Agency	2007
	Air pollution-ozone days	U.S. Environmental Protection Agency	2007
<b>Built Environment</b>	Access to recreational facilities	Census County Business Patterns	2009
	Limited access to healthy foods <sup>4</sup>	U.S. Department of Agriculture	2006
	Fast food restaurants	Census County Business Patterns	2009

<sup>1</sup> NCES used for AK, AL, AR, CA, CT, FL, HI, ID, KY, MT, ND, NJ, OK, SD and TN

<sup>2</sup> State data source for IL.

<sup>3</sup> Not available for AK and HI.

<sup>4</sup> Access to Healthy Foods (2009) from Census Zip Code Business Patterns for AK and HI.