

Douglas County, NV in Profile

Part of: Gardnerville Ranchos NV, Micropolitan Area

Part of: Sacramento--Arden-Arcade--Truckee CA-NV, Combined Statistical Area



Douglas County is one of 17 counties and county equivalent cities in Nevada. It has 709.9 sq. miles in land area and a population density of 66.0 per square mile. On the most recent census form, 96.9% of the population reported only one race, with 0.4% of these reporting African-American. The population of this county is 10.9% Hispanic (of any race). The average household size is 2.40 persons compared to an average family size of 2.80 persons.

In 2010 accommodation and food services was the largest of 20 major sectors. It had an average wage per job of \$27,569. Per capita income grew by 9.3% between 1999 and 2009 (adjusted for inflation).

People & Income Overview (By Place of Residence)	Value	Rank in State	Industry Overview (2010) (By Place of Work)	Value	Rank in State
Population (2011)	46,886	6	Covered Employment	17,198	5
Growth (%) since 2010 Census	-0.2%	8	Avg wage per job	\$38,282	14
Households (2010)	19,638	5	Manufacturing - % all jobs in County	9.7%	3
Labor Force (persons) (2010)	22,062	6	Avg wage per job	\$56,171	1
Unemployment Rate (2010)	15.9	4	Transportation & Warehousing - % all jobs in County	0.7%	13
Per Capita Personal Income (2009)	\$55,080	1	Avg wage per job	\$43,759	6
Median Household Income (2010)	\$57,176	6	Health Care, Social Assist. - % all jobs in County	7.1%	5
Poverty Rate (2010)	9.3	15	Avg wage per job	\$44,120	6
H.S. Diploma or More - % of Adults 25+ (2010 ACS 5yr)	91.2	2	Finance and Insurance - % all jobs in County	2.0%	5
Bachelor's Deg. or More - % of Adults 25+ (2010 ACS 5yr)	25.9	2	Avg wage per job	\$50,066	3

Population Over Time	Number	Rank in State	Percent of State	State
2011	46,886	6	1.72%	2,723,322
2010	46,997	6	1.74%	2,700,551
2000	41,259	5	2.06%	1,998,257
1990	27,637	5	2.30%	1,201,675
1980	19,421	4	2.43%	800,508
2000 to 2010 % change	13.9%	8		35.1%
1990 to 2010 % change	70.1%	5		124.7%
1980 to 2010 % change	142.0%	7		237.4%

Source: US Census Bureau

Components of Population Change in 2010/2011	Number	Rank in State	Percent of State	State
Net Domestic Migration (chg 2010/2011)	-85	11		-8,008
Net International Migration (chg 2010/2011)	37	9	0.38%	9,679
Natural Increase (births minus deaths)	-62	16	-0.36%	17,399
Births	379	7	1.03%	36,772
Deaths	441	6	2.28%	19,373

Source: US Census Bureau

Population Estimates by Age in 2010	Number	Rank in State	Pct Dist. in County	Pct Dist. in State
Preschool (0 to 4)	2,305	6	4.9%	6.9%
School Age (5 to 17)	7,180	6	15.3%	17.7%
College Age (18 to 24)	2,984	6	6.3%	9.2%
Young Adult (25 to 44)	9,335	6	19.9%	28.5%
Older Adult(45 to 64)	15,714	4	33.4%	25.6%
Older (65 plus)	9,479	4	20.2%	12.0%
Median Age	47.4	5		Median Age = 36.3

Sources: US Census Bureau; Median age calculated by the IBRC.

Population Estimates by Race and Hispanic Origin in 2010	Number	Rank in State	Pct Dist. in County	Pct Dist. in State
American Ind. or Alaskan Native Alone	896	7	1.9%	1.2%
Asian Alone	725	4	1.5%	7.2%
Black Alone	201	10	0.4%	8.1%
Native Hawaiian and Other Pac. Isl. Alone	66	7	0.1%	0.6%
White Alone	42,130	5	89.6%	66.2%
Two or More Race Groups	1,473	7	3.1%	4.7%
Hispanic or Latino (can be of any race)				
Non-Hispanic or Latino	41,894	5	89.1%	73.5%
Hispanic or Latino	5,103	7	10.9%	26.5%

Source: US Census Bureau

Hispanic or Latino Population in 2010 (can be of any race)	Number	Rank in State	Pct Dist. in County	Pct Dist. in State
Hispanic	5,103	7	10.9%	26.5%
Mexican	3,964	7	8.4%	20.0%
Cuban	59	5	0.1%	0.8%
Puerto Rican	193	5	0.4%	0.8%
Other	887	7	1.9%	4.9%
White, Not Hispanic (reporting white alone)	39,094	4	83.2%	54.1%

Source: US Census Bureau, American Community Survey, 5 Year Estimates

Households in 2010	Number	Rank in State	Pct All Hhlds in County	Pct All Hhlds in State
Total Households	19,638	5	100.0%	100.0%
Family Households	13,519	4	68.8%	65.3%
Married with Children	3,322	6	16.9%	19.6%
Married without Children	7,583	3	38.6%	26.4%
Single Parents	1,392	6	7.1%	10.4%
Other	1,222	6	6.2%	8.9%
Non-family Households	6,119	4	31.2%	34.7%
Living Alone	4,706	5	24.0%	25.7%
Average Household Size	2.40	10		
Average Family Household Size	2.80	14		

Source: US Census Bureau

Housing Units in 2010	Number	Rank in State	Pct All HU in County	Pct All HU in State
2009 Housing Units (Census Estimate)	23,410	3		

Total Housing Units	23,671	3	100.0%	100.0%
Occupied	19,638	5	83.0%	85.7%
Owner Occupied	14,105	4	59.6%	50.4%
Renter Occupied	5,533	5	23.4%	35.3%
Vacant	4,033	4	17.0%	14.3%
For seasonal or recreational use	2,303	3	9.7%	2.8%

Source: US Census Bureau

Residential Building Permits in 2010	Units	Pct Dist. in County	Pct Dist. in State	Cost (\$000)
Total Permits Filed	56	100.0%	100.0%	\$19,609
Single Family	38	67.9%	83.2%	\$16,807
Two Family	0	0.0%	0.3%	\$0
Three & Four Family	0	0.0%	2.2%	\$0
Five Families and More	18	32.1%	14.3%	\$2,802

Source: US Census Bureau

Median Income	Number	Rank in State	Percent of State
Median household income in 2010	\$57,176	6	112.1%
Median household income in 2000 (adj. for inflation)	\$67,228	1	118.8%
5-year percent change 2000 to 2010	-15.0%	16	

Source: US Census Bureau

Per Capita Personal Income	Number	Rank in State	Percent of State
Per capita income - 2009	\$55,080	1	146.2%
Per capita income - 1999 (adj. for inflation)	\$50,387	1	132.0%
Per capita income - 1989 (adj. for inflation)	\$40,084	1	120.9%
Per capita income - 1979 (adj. for inflation)	\$37,816	1	120.3%
10-year % change	9.3%	9	
20-year % change	37.4%	3	
30-year % change	45.7%	6	

Source: US Bureau of Economic Analysis

Personal Income in 2009 (\$000)	Number	5-Year % Change (adj*)	Rank in % Change
Total Earnings by Place of Work	\$1,021,798	-11.3%	17
Minus: Contributions for government social insurance	\$111,589	-6.0%	16
Personal contributions for government social insurance	\$60,512	-2.6%	16
Employer contributions for government social insurance	\$51,077	-9.7%	15
Plus: Adjustment for residence	\$368,478	32.6%	3
Equals: Net Earnings by Place of Residence	\$1,278,687	-2.5%	13
Plus: Dividends, rent, interest	\$919,075	12.1%	4
Plus: Transfer payments	\$306,396	46.4%	8
Equals: Personal Income by Place of Residence	\$2,504,158	7.0%	11

Source: US Bureau of Economic Analysis (*adj = Adjusted for Inflation)

Poverty Estimates	Number	Rank in State	5-Year % Change	Rank in % Change
Poverty rate in 2010	9.3	15	--	--
	In 2000 6.6	16	40.9%	6
Poverty rate for children under 18 in 2010	14.5	12	--	--
	In 2000 10.6	16	36.8%	7

Source: US Census Bureau

Labor Force Annual Averages in 2010	Number	% of State	State	Rank in State
Total Labor Force	22,062	1.63%	1,350,309	<u>6</u>
5-year % change	0.1%	-	9.9%	<u>17</u>
10-year % change	1.6%	-	27.0%	<u>14</u>
Employed	18,556	1.61%	1,149,537	<u>5</u>
5-year % change	-11.4%	-	-2.0%	<u>17</u>
10-year % change	-10.9%	-	13.2%	<u>17</u>
Unemployed	3,506	1.75%	200,772	<u>5</u>
5-year % change	226.1%	-	265.6%	<u>6</u>
10-year % change	292.6%	-	321.6%	<u>6</u>
Unemployment Rate	15.9	106.71%	14.9	<u>4</u>
5-year % change	224.5%	-	231.1%	<u>3</u>
10-year % change	287.8%	-	231.1%	<u>2</u>

Source: US Bureau of Labor Statistics

Educational Attainment: ACS 2005-2010	Number	Percent of Population 25+	Rank of % in State	State % of Population 25+
Total Population 25 and Older	34,150	100.0%		100.0%
Less Than 9th Grade	767	2.2%	<u>16</u>	6.3%
9th to 12th, No Diploma	2,242	6.6%	<u>16</u>	9.4%
High School Graduate (incl. equiv.)	8,876	26.0%	<u>16</u>	29.7%
Some College, No Degree	10,142	29.7%	<u>3</u>	25.5%
Associate Degree	3,288	9.6%	<u>2</u>	7.3%
Bachelor's Degree	5,452	16.0%	<u>2</u>	14.4%
Graduate, Professional or Doctorate Degree	3,383	9.9%	<u>1</u>	7.4%

Source: US Census Bureau, American Community Survey, 2005-2009 5-Year Estimates

Educational Attainment: Census 2000	Number	Percent of Population 25+	Rank of % in State	State % of Population 25+
Total Population 25 and Older	29,279	100.0%		100.0%
Less Than 9th Grade	579	2.0%	<u>16</u>	6.4%
9th to 12th, No Diploma	1,888	6.4%	<u>17</u>	12.9%
High School Graduate (incl. equiv.)	7,794	26.6%	<u>16</u>	29.3%
Some College, No Degree	9,906	33.8%	<u>1</u>	27.0%
Associate Degree	2,332	8.0%	<u>1</u>	6.2%
Bachelor's Degree	4,633	15.8%	<u>1</u>	12.1%
Graduate or Professional Degree	2,147	7.3%	<u>2</u>	6.1%

Source: US Census Bureau

Workers Living in County in 2000	Number	Rank in State	Pct Dist. in County	Rank of Pct Dist.
Total	18,897	<u>5</u>	100.0%	
Working in County	12,438	<u>5</u>	65.8%	<u>15</u>
Working Elsewhere	6,459	<u>4</u>	34.2%	<u>3</u>

Source: US Census Bureau (Includes only domestic commuting for workers over 16 years old.)

People Working in County in 2000	Number	Rank in State	Pct Dist. in County	Rank of Pct Dist.
Total	19,555	<u>5</u>	100.0%	
Living in County	12,438	<u>5</u>	63.6%	<u>14</u>
Living Elsewhere	7,117	<u>4</u>	36.4%	<u>4</u>

Source: US Census Bureau (Includes only domestic commuting for workers over 16 years old.)

Commuting Flows in 2000	Number	Rank in State	Pct Dist.
Gross Flow (Living Elsewhere + Working Elsewhere)	13,576	<u>4</u>	100%
Net Flow (Living Elsewhere - Working Elsewhere)	658	<u>6</u>	
Largest Single Inflow : El Dorado County, CA	4,130		30.4%
Largest Single Outflow : Carson City County, NV	3,415		25.2%

Source: US Census Bureau (Includes only domestic commuting for workers over 16 years old.)

Annual Covered Employment and Wages Over Time (NAICS)	Establishments	Jobs	Average Wage Per Job (*adj)	Rank in State	Pct of State Avg Wage
2010	1,766	17,198	\$38,282	<u>15</u>	90.0%
2009	1,876	18,148	\$38,328	<u>14</u>	88.2%
2008	1,949	20,456	\$38,236	<u>15</u>	87.8%
2007	1,915	21,538	\$39,333	<u>13</u>	88.7%
2006	1,901	21,875	\$37,649	<u>13</u>	86.9%
2005	1,765	21,784	\$37,062	<u>15</u>	85.6%
2004	1,642	21,682	\$36,904	<u>17</u>	86.2%
2003	1,467	20,875	\$36,883	<u>14</u>	88.1%
2002	1,334	20,339	\$36,877	<u>14</u>	89.5%
2001	1,269	20,715	\$36,464	<u>15</u>	89.4%
2000	1,318	20,807	\$35,789	<u>14</u>	87.5%
10-Year Change	448	-3,609	\$2,493		
10-Year Percent Change	34.0%	-17.3%	7.0%		

Source: US Bureau of Labor Statistics(BLS)

*adj = Adjusted for Inflation; D = Non-Discloseable Data; N/A = Not Available; Note: Average wage may not match published numbers due to rounding.

Annual Industry Distribution of Jobs and Avg. Wage in 2010 (NAICS)	Establishments	Jobs	Pct Dist. in County	Annual Average Wage Per Job	Rank in State
Total Covered Employment and Wages	1,766	17,198	100.0%	\$38,282	<u>14</u>
Private	1,716	14,919	86.7%	\$37,061	<u>14</u>
Agri., forestry, hunting	21	D	D	D	N/A
Mining	2	D	D	D	N/A
Construction	248	775	4.5%	\$40,330	<u>7</u>
Manufacturing	73	1,673	9.7%	\$56,171	<u>1</u>
Wholesale trade	84	226	1.3%	\$80,066	<u>1</u>
Retail trade	166	2,021	11.7%	\$24,227	<u>10</u>
Transportation, warehousing	34	126	0.7%	\$43,759	<u>6</u>
Utilities	11	93	0.5%	\$49,388	<u>8</u>
Information	24	135	0.8%	\$44,026	<u>6</u>
Finance and Insurance	87	352	2.0%	\$50,066	<u>3</u>
Real Estate, rental, leasing	114	366	2.1%	\$42,631	<u>1</u>
Professional, technical services	251	659	3.8%	\$66,967	<u>4</u>
Mgmt. of companies, enterprises	48	152	0.9%	\$126,188	<u>3</u>
Administrative, waste services	127	693	4.0%	\$25,167	<u>9</u>
Educational services	27	108	0.6%	\$16,759	<u>6</u>
Health care, social assistance	137	1,229	7.1%	\$44,120	<u>6</u>
Arts, entertainment, recreation	37	564	3.3%	\$30,944	<u>3</u>

Accommodation and food services	131	5,441	31.6%	\$27,569	<u>2</u>
Other services, exc. public admin.	104	343	2.0%	\$29,953	<u>8</u>
Public administration	23	1,028	6.0%	\$53,905	<u>8</u>

Source: US Bureau of Labor Statistics(BLS)

D = Not shown to avoid disclosure of confidential information.

N/A = This item is not available.

Note: Average wage may not match published numbers due to rounding.

BEA Major Sectors (NAICS) in 2009 (by place of work)		Earnings (\$000)	Avg Earnings Per Job	Rank in State	Jobs	Pct Dist. in County	Pct Dist. in State
Total by place of work		\$1,021,798	\$34,773	<u>14</u>	29,385	100.0%	100.0%
Wage and Salary		\$734,174	\$38,622	<u>13</u>	19,009	64.7%	77.8%
Proprietors		\$123,146	\$11,868	<u>11</u>	10,376	35.3%	22.2%
Farm		-\$1,923	-\$12,651	<u>16</u>	152	0.5%	0.2%
Nonfarm		\$125,069	\$12,233	<u>8</u>	10,224	34.8%	22.1%
Farm		\$4,455	\$16,939	<u>9</u>	263	0.9%	0.3%
Nonfarm		\$1,017,343	\$34,934	<u>15</u>	29,122	99.1%	99.7%
Private		\$866,820	\$32,459	<u>13</u>	26,705	90.9%	88.6%
Forestry, fishing, etc. *		D	N/A	N/A	D	D	0.1%
21	Mining	D	N/A	N/A	D	D	1.1%
22	Utilities	\$1,824	\$39,652	<u>8</u>	46	0.2%	0.3%
23	Construction	\$72,823	\$38,943	<u>6</u>	1,870	6.4%	6.5%
31-33	Manufacturing	\$125,990	\$61,220	<u>4</u>	2,058	7.0%	2.9%
42	Wholesale Trade	\$25,292	\$72,888	<u>2</u>	347	1.2%	2.6%
44-45	Retail Trade	\$75,185	\$26,316	<u>7</u>	2,857	9.7%	10.1%
48 49	Trans. and warehousing	\$9,371	\$39,374	<u>10</u>	238	0.8%	3.5%
51	Information	\$8,955	\$34,575	<u>7</u>	259	0.9%	1.2%
52	Finance and insurance	\$26,712	\$13,594	<u>10</u>	1,965	6.7%	7.0%
53	Real Estate and rental and leasing	\$34,076	\$11,231	<u>7</u>	3,034	10.3%	6.3%
54	Professional, technical services	\$68,925	\$41,672	<u>7</u>	1,654	5.6%	5.3%
55	Management of companies, enterprises	\$26,474	\$129,775	<u>1</u>	204	0.7%	1.3%
56	Administrative and waste services	\$24,452	\$19,656	<u>8</u>	1,244	4.2%	6.0%
61	Educational services	\$5,264	\$16,711	<u>5</u>	315	1.1%	0.9%
62	Health care, social assistance	\$73,296	\$48,063	<u>4</u>	1,525	5.2%	6.9%
71	Arts, entertainment, and recreation	\$24,740	\$24,303	<u>3</u>	1,018	3.5%	3.2%
72	Accommodation and food services	\$212,598	\$34,858	<u>2</u>	6,099	20.8%	19.0%
81	Other services, exc. public admin.	\$43,811	\$28,174	<u>9</u>	1,555	5.3%	4.3%
NA	Gov. and gov. enterprises	\$150,523	\$62,277	<u>6</u>	2,417	8.2%	11.1%

Source: US Bureau of Economic Analysis(BEA)

D = Not shown to avoid disclosure of confidential information, but the estimates for this item are included in the totals.

L = Less than 10 jobs, but the estimates for this item are included in the totals.

N/A = Not available or not applicable.

* = "Other" consists of the number of jobs held by U.S. residents employed by international organizations and foreign embassies and consulates in the United States.

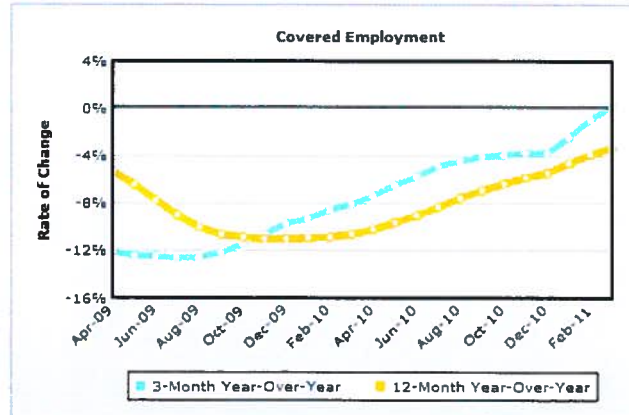
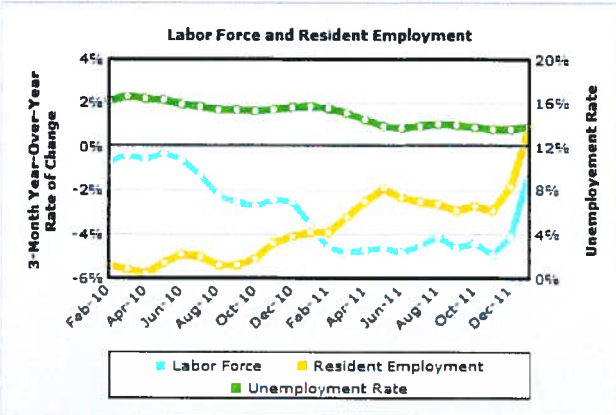
[Home](#) | [About STATS America](#) | [Contact Us](#) | [Report a Problem](#) |



STATS America is a service of the Indiana Business Research Center at Indiana University's Kelley School of Business: www.ibrc.indiana.edu. It was developed with support from the U.S. Department of Commerce, Economic Development Administration and Indiana University.

Updated: April 06, 2012 at 12:26

ECONOMIC CONDITIONS



Data Source: U.S. Bureau of Labor Statistics

Data Source: U.S. Bureau of Labor Statistics

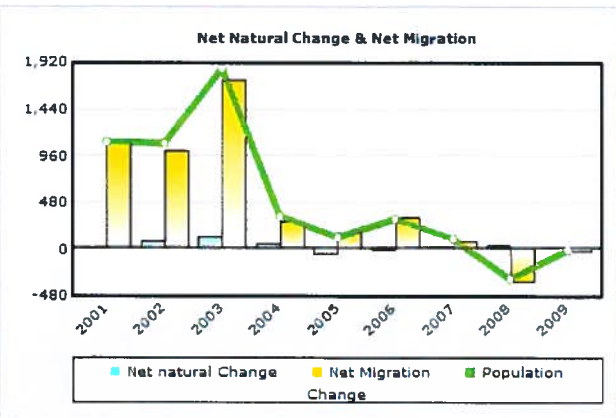
	3-Month Average			3-Month Year-Over-Year Change			
	January 2010	January 2011	January 2012	January 2010 to January 2011		January 2011 to January 2012	
	Number	Percent	Number	Number	Percent	Number	Percent
Labor Force	22,138	21,368	21,139	-770	-3.5	-229	-1.1
Resident Employment	18,753	18,021	18,191	-732	-3.9	170	0.9
Unemployment Rate (%)	15.3	15.7	13.9	n/a	n/a	n/a	n/a
	March 2009	March 2010	March 2011	March 2009 to March 2010		March 2010 to March 2011	
Covered Employment	18,405	16,935	16,978	-1,470	-8	43	0.3

Data Source: U.S. Bureau of Labor Statistics

POPULATION & HOUSEHOLDS

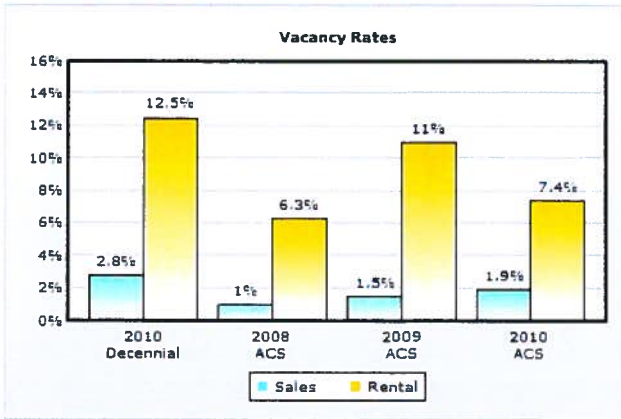
	Decennial Census				ACS & Population Estimates Program						
	April 2000	April 2010	Average Annual Change 2000 to 2010		July 2008	July 2009	July 2010	2008 to 2009		2009 to 2010	
			Number	Percent				Number	Percent	Number	Percent
Population	41,259	46,997	574	1.4	47,270	46,965	46,956	-305	-0.6	-9	0
Households	16,401	19,638	324		18,838	18,679	18,926	-159	-0.8	247	1.3

Data Source: 1 - 2000 Census; 2010 Census; U.S. Census Bureau Population Estimates
 2 - 2000 Census; 2010 Census; 2008, 2009 and 2010 American Community Surveys (3 - Year)

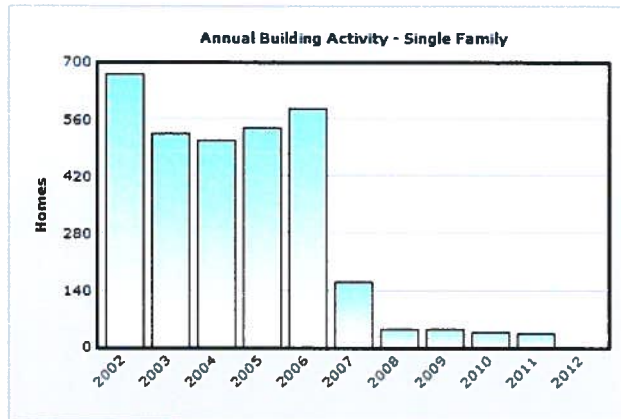


Data Source: U.S. Census Bureau Population Estimates

Notes: 1 - Values in chart reflect July year-to-year changes
 2 - Net Migration includes residual population change



Data Source: 2010 Census; 2008, 2009 and 2010 American Community Surveys (3 - Year)

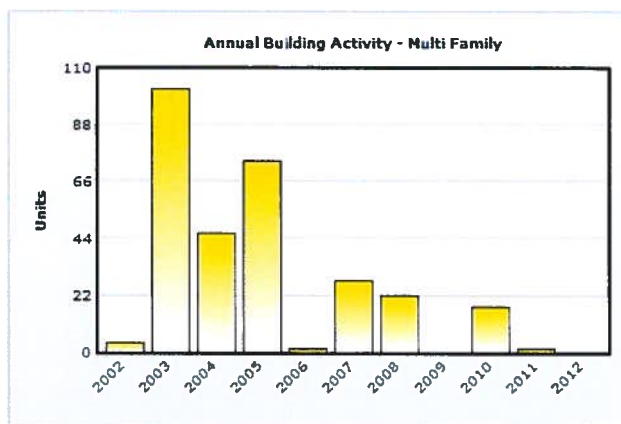


Data Source: U.S. Census Bureau, Building Permits Survey; adjustments by analyst

Note: Data for 2011 and 2012 is preliminary, through January 2012

Housing Inventory by Tenure				
	2010 Decennial	2008 ACS	2009 ACS	2010 ACS
Total Housing Units	23,671	23,105	23,356	23,631
Occupied	19,638	18,838	18,679	18,926
Owners	14,105	14,087	13,908	14,083
% Owners	71.8	74.8	74.5	74.4
Renters	5,533	4,751	4,771	4,843
% Renters	28.2	25.2	25.5	25.6
Total Vacant	4,033	4,267	4,677	4,705
Available for Sale	403	136	211	280
Available for Rent	790	321	590	389
Other Vacant	2,840	3,810	3,876	4,036

Data Source: 2010 Census; 2008, 2009 and 2010 American Community Surveys (3 - Year)



Data Source: U.S. Census Bureau, Building Permits Survey; adjustments by analyst

Note: Data for 2011 and 2012 is preliminary, through January 2012

Douglas County, Nevada

US Census Quick Facts
<http://quickfacts.census.gov>

People QuickFacts	Douglas County	Nevada
Population, 2011 estimate	NA	2,723,322
Population, 2010	46,997	2,700,551
Population, percent change, 2000 to 2010	13.9%	35.1%
Population, 2000	41,259	1,998,257
Persons under 5 years, percent, 2010	4.9%	6.9%
Persons under 18 years, percent, 2010	20.2%	24.6%
Persons 65 years and over, percent, 2010	20.2%	12.0%
Female persons, percent, 2010	50.0%	49.5%
White persons, percent, 2010 (a)	89.6%	66.2%
Black persons, percent, 2010 (a)	0.4%	8.1%
American Indian and Alaska Native persons, percent, 2010 (a)	1.9%	1.2%
Asian persons, percent, 2010 (a)	1.5%	7.2%
Native Hawaiian and Other Pacific Islander, percent, 2010 (a)	0.1%	0.6%
Persons reporting two or more races, percent, 2010	3.1%	4.7%
Persons of Hispanic or Latino origin, percent, 2010 (b)	10.9%	26.5%
White persons not Hispanic, percent, 2010	83.2%	54.1%
Living in same house 1 year & over, 2006-2010	86.2%	78.2%
Foreign born persons, percent, 2006-2010	6.8%	19.3%
Language other than English spoken at home, pct age 5+, 2006-2010	8.3%	28.2%
High school graduates, percent of persons age 25+, 2006-2010	91.2%	84.3%
Bachelor's degree or higher, pct of persons age 25+, 2006-2010	25.9%	21.8%
Veterans, 2006-2010	5,870	234,081
Mean travel time to work (minutes), workers age 16+, 2006-2010	23.2	23.6
Housing units, 2010	23,671	1,173,814
Homeownership rate, 2006-2010	76.2%	60.1%
Housing units in multi-unit structures, percent, 2006-2010	11.4%	29.4%
Median value of owner-occupied housing units, 2006-2010	\$375,800	\$254,200
Households, 2006-2010	19,183	979,621
Persons per household, 2006-2010	2.44	2.65
Per capita money income in past 12 months (2010 dollars) 2006-2010	\$35,239	\$27,589
Median household income 2006-2010	\$60,721	\$55,726
Persons below poverty level, percent, 2006-2010	7.9%	11.9%

Business QuickFacts	Douglas County	Nevada
Private nonfarm establishments, 2009	1,565	59,785 ¹
Private nonfarm employment, 2009	15,961	1,042,166 ¹
Private nonfarm employment, percent change 2000-2009	-9.3%	15.4% ¹
Nonemployer establishments, 2009	4,720	166,864
Total number of firms, 2007	6,722	221,260
Black-owned firms, percent, 2007	S	3.9%
American Indian- and Alaska Native-owned firms, percent, 2007	S	0.8%
Asian-owned firms, percent, 2007	2.6%	7.9%
Native Hawaiian and Other Pacific Islander-owned firms, percent, 2007	F	0.3%
Hispanic-owned firms, percent, 2007	3.2%	8.1%
Women-owned firms, percent, 2007	27.4%	28.6%
Manufacturers shipments, 2007 (\$1000)	751,816	15,735,787
Merchant wholesaler sales, 2007 (\$1000)	D	19,255,893
Retail sales, 2007 (\$1000)	670,386	37,433,983
Retail sales per capita, 2007	\$14,645	\$14,579
Accommodation and food services sales, 2007 (\$1000)	680,439	28,815,533
Building permits, 2010	56	6,443
Federal spending, 2009	248,319	19,893,713 ¹
Geography QuickFacts	Douglas County	Nevada
Land area in square miles, 2010	709.72	109,781.18
Persons per square mile, 2010	66.2	24.6
FIPS Code	005	32
Metropolitan or Micropolitan Statistical Area	Gardnerville Ranchos, NV Micro Area	

1: Includes data not distributed by county.

Population estimates for counties will be available in April, 2012 and for cities in June, 2012.

(a) Includes persons reporting only one race.

(b) Hispanics may be of any race, so also are included in applicable race categories.

D: Suppressed to avoid disclosure of confidential information

F: Fewer than 100 firms

FN: Footnote on this item for this area in place of data

NA: Not available

S: Suppressed; does not meet publication standards

X: Not applicable

Z: Value greater than zero but less than half unit of measure shown

Source U.S. Census Bureau: State and County QuickFacts. Data derived from Population Estimates,

American Community Survey, Census of Population and Housing, State and County Housing Unit

Estimates, County Business Patterns, Nonemployer Statistics, Economic Census, Survey of Business

Owners, Building Permits, Consolidated Federal Funds Report

Last Revised: Tuesday, 31-Jan-2012 16:54:29 EST



	Douglas County	Error Margin	National Benchmark*	Nevada	Rank (of 16)
Health Outcomes					1
Mortality					1
Premature death	5,958	5,121-6,795	5,466	7,927	
Morbidity					8
Poor or fair health	15%	12-18%	10%	18%	
Poor physical health days	3.3	2.8-3.8	2.6	3.7	
Poor mental health days	4.0	3.3-4.7	2.3	3.7	
Low birthweight	8.0%	7.0-9.0%	6.0%	8.1%	
Health Factors					1
Health Behaviors					1
Adult smoking	19%	16-22%	14%	22%	
Adult obesity	22%	19-25%	25%	26%	
Physical inactivity	18%	15-21%	21%	24%	
Excessive drinking	20%	17-23%	8%	19%	
Motor vehicle crash death rate	18	14-23	12	17	
Sexually transmitted infections	131		84	386	
Teen birth rate	20	18-23	22	53	
Clinical Care					1
Uninsured	19%	17-21%	11%	25%	
Primary care physicians	933:1		631:1	1,153:1	
Preventable hospital stays	41	36-45	49	59	
Diabetic screening	82%	75-88%	89%	76%	
Mammography screening	74%	67-79%	74%	60%	
Social & Economic Factors					5
High school graduation	90%			70%	
Some college	66%	60-72%	68%	54%	
Unemployment	15.9%		5.4%	14.9%	
Children in poverty	15%	10-19%	13%	21%	
Inadequate social support	17%	15-20%	14%	23%	
Children in single-parent households	26%	20-32%	20%	34%	
Violent crime rate	174		73	728	
Physical Environment					4
Air pollution-particulate matter days	0		0	1	
Air pollution-ozone days	0		0	24	
Access to recreational facilities	9		16	7	
Limited access to healthy foods	2%		0%	4%	
Fast food restaurants	40%		25%	56%	

* 90th percentile, i.e., only 10% are better

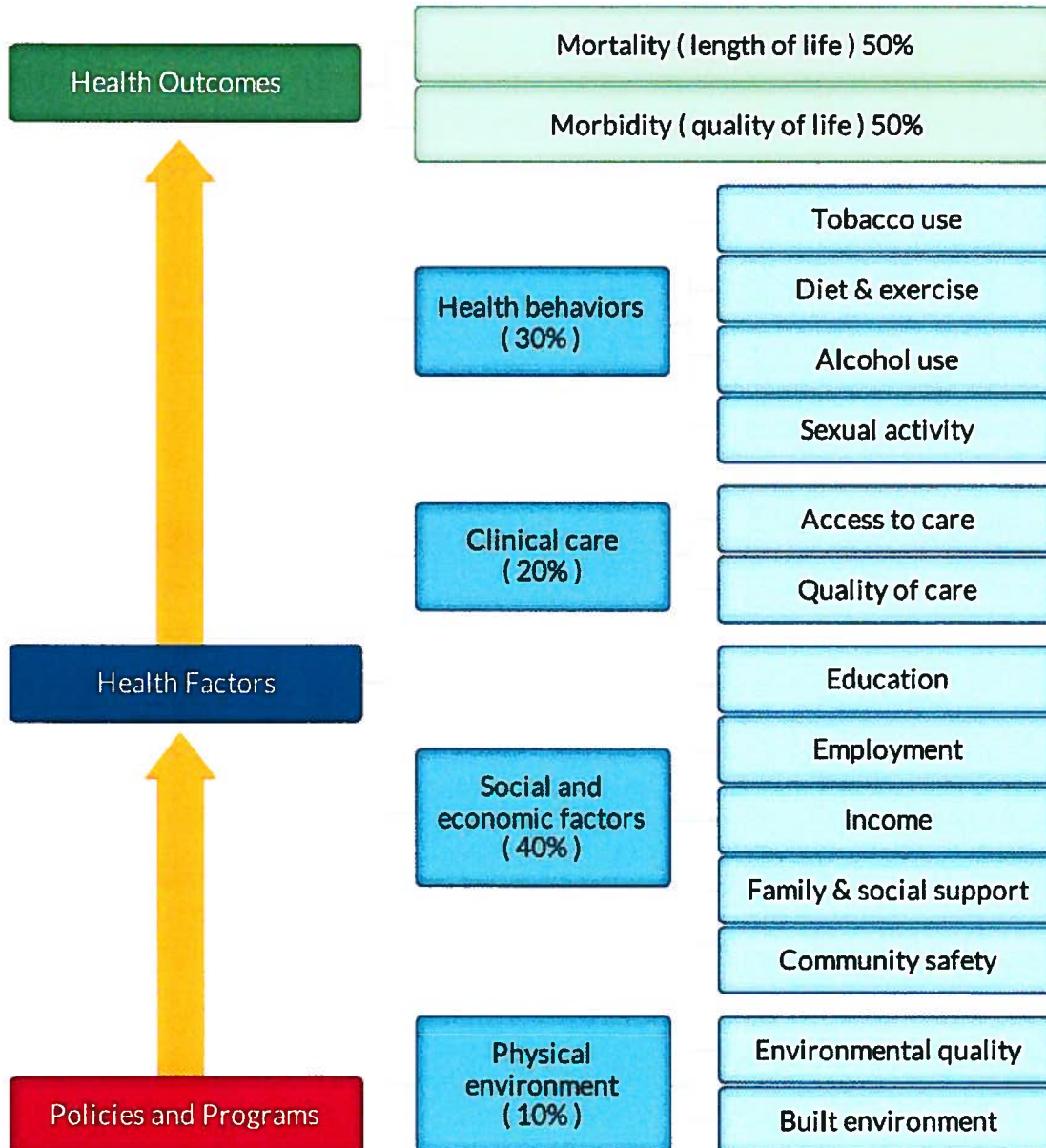
2012

Note: Blank values reflect unreliable or missing data

County Health Rankings

The 2012 *County Health Rankings* report ranks Nevada counties according to their summary measures of **health outcomes** and **health factors**. Counties also receive a rank for mortality, morbidity, health behaviors, clinical care, and the physical environment. The figure below depicts the structure of the *Rankings* model; those having high ranks (e.g., 1 or 2) are estimated to be the “healthiest.”

Our summary **health outcomes** rankings are based on an equal weighting of mortality and morbidity measures. The summary **health factors** rankings are based on weighted scores of four types of factors: behavioral, clinical, social and economic, and environmental. The weights for the factors (shown in parentheses in the figure) are based upon a review of the literature and expert input, but represent just one way of combining these factors.

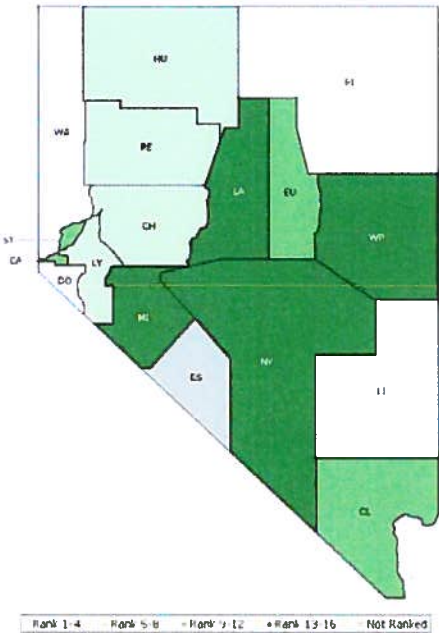


County Health Rankings model ©2012 UWPHI

The maps on this page and the next display Nevada’s counties divided into groups by health rank. Maps help locate the healthiest and least healthy counties in the state. The lighter colors indicate better

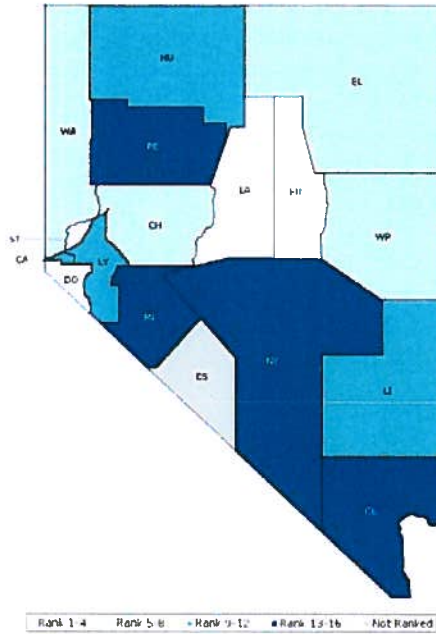
performance in the respective summary rankings. The green map shows the distribution of summary health outcomes. The blue displays the distribution of the summary rank for health factors.

HEALTH OUTCOMES



County	Rank	County	Rank	County	Rank	County	Rank
Carson City	12	Esmeralda	NR	Lyon	5	Washoe	4
Churchill	7	Eureka	11	Mineral	16	White Pine	13
Clark	10	Humboldt	8	Nye	15		
Douglas	1	Lander	14	Pershing	6		
Elko	2	Lincoln	3	Storey	9		

HEALTH FACTORS



County	Rank	County	Rank	County	Rank	County	Rank
Carson City	9	Esmeralda	NR	Lyon	12	Washoe	5
Churchill	8	Eureka	3	Mineral	16	White Pine	6
Clark	13	Humboldt	11	Nye	15		
Douglas	1	Lander	2	Pershing	14		
Elko	7	Lincoln	10	Storey	4		

Summary Health Outcomes & Health Factors Rankings

Counties receive two summary ranks:

- Health Outcomes
- Health Factors

Each of these ranks represents a weighted summary of a number of measures.

Health outcomes represent how healthy a county is while health factors represent what influences the health of the county.

Rank	Health Outcomes	Rank	Health Factors
1	Douglas	1	Douglas
2	Elko	2	Lander
3	Lincoln	3	Eureka
4	Washoe	4	Storey
5	Lyon	5	Washoe
6	Pershing	6	White Pine
7	Churchill	7	Elko
8	Humboldt	8	Churchill
9	Storey	9	Carson City
10	Clark	10	Lincoln
11	Eureka	11	Humboldt
12	Carson City	12	Lyon
13	White Pine	13	Clark
14	Lander	14	Pershing
15	Nye	15	Nye
16	Mineral	16	Mineral

Not Ranked: Esmeralda

2012 County Health Rankings: Measures, Data Sources, and Years of Data

	Measure	Data Source	Years of Data
HEALTH OUTCOMES			
Mortality	Premature death	National Center for Health Statistics	2006-2008
Morbidity	Poor or fair health	Behavioral Risk Factor Surveillance System	2004-2010
	Poor physical health days	Behavioral Risk Factor Surveillance System	2004-2010
	Poor mental health days	Behavioral Risk Factor Surveillance System	2004-2010
	Low birthweight	National Center for Health Statistics	2002-2008
HEALTH FACTORS			
HEALTH BEHAVIORS			
Tobacco Use	Adult smoking	Behavioral Risk Factor Surveillance System	2004-2010
Diet and Exercise	Adult obesity	National Center for Chronic Disease Prevention and Health Promotion	2009
	Physical inactivity	National Center for Chronic Disease Prevention and Health Promotion	2009
Alcohol Use	Excessive drinking	Behavioral Risk Factor Surveillance System	2004-2010
	Motor vehicle crash death rate	National Center for Health Statistics	2002-2008
Sexual Activity	Sexually transmitted infections	National Center for Hepatitis, HIV, STD and TB Prevention	2009
	Teen birth rate	National Center for Health Statistics	2002-2008
CLINICAL CARE			
Access to Care	Uninsured	Small Area Health Insurance Estimates	2009
	Primary care physicians	Health Resources & Services Administration	2009
Quality of Care	Preventable hospital stays	Medicare/Dartmouth Institute	2009
	Diabetic screening	Medicare/Dartmouth Institute	2009
	Mammography screening	Medicare/Dartmouth Institute	2009
SOCIAL AND ECONOMIC FACTORS			
Education	High school graduation	National Center for Education Statistics and state-specific sources ¹	2008-2010
	Some college	American Community Survey	2006-2010
Employment	Unemployment	Bureau of Labor Statistics	2010
Income	Children in poverty	Small Area Income and Poverty Estimates	2010
Family and Social Support	Inadequate social support	Behavioral Risk Factor Surveillance System	2006-2010
	Children in single-parent households	American Community Survey	2006-2010
Community Safety	Violent crime rate ²	Federal Bureau of Investigation	2007-2009
PHYSICAL ENVIRONMENT			
Environmental Quality ³	Air pollution-particulate matter days	U.S. Environmental Protection Agency	2007
	Air pollution-ozone days	U.S. Environmental Protection Agency	2007
Built Environment	Access to recreational facilities	Census County Business Patterns	2009
	Limited access to healthy foods ⁴	U.S. Department of Agriculture	2006
	Fast food restaurants	Census County Business Patterns	2009

¹ NCES used for AK, AL, AR, CA, CT, FL, HI, ID, KY, MT, ND, NJ, OK, SD and TN

² State data source for IL.

³ Not available for AK and HI.

⁴ Access to Healthy Foods (2009) from Census Zip Code Business Patterns for AK and HI.