

Churchill County, NV in Profile

Part of: Fallon NV, Micropolitan Area



Churchill County is one of 17 counties and county equivalent cities in Nevada. It has 4,929.1 sq. miles in land area and a population density of 5.0 per square mile. On the most recent census form, 95.8% of the population reported only one race, with 1.6% of these reporting African-American. The population of this county is 12.1% Hispanic (of any race). The average household size is 2.50 persons compared to an average family size of 3.00 persons.

In 2010 health care and social assistance was the largest of 20 major sectors. It had an average wage per job of \$39,881. Per capita income grew by 22.9% between 1999 and 2009 (adjusted for inflation).

People & Income Overview (By Place of Residence)	Value	Rank in State	Industry Overview (2010) (By Place of Work)	Value	Rank in State
Population (2011)	24,637	8	Covered Employment	7,818	8
Growth (%) since 2010 Census	-1.0%	13	Avg wage per job	\$38,805	13
Households (2010)	9,671	8	Manufacturing - % all jobs in County	3.4%	7
Labor Force (persons) (2010)	13,153	8	Avg wage per job	\$46,337	6
Unemployment Rate (2010)	11.6	11	Transportation & Warehousing - % all jobs in County	9.5%	2
Per Capita Personal Income (2009)	\$38,032	6	Avg wage per job	\$64,447	1
Median Household Income (2010)	\$48,235	11	Health Care, Social Assist. - % all jobs in County	12.6%	1
Poverty Rate (2010)	11.6	10	Avg wage per job	\$39,881	9
H.S. Diploma or More - % of Adults 25+ (2010 ACS 5yr)	87.7	5	Finance and Insurance - % all jobs in County	1.9%	6
Bachelor's Deg. or More - % of Adults 25+ (2010 ACS 5yr)	18.2	6	Avg wage per job	\$36,707	6

Population Over Time	Number	Rank in State	Percent of State	State
2011	24,637	8	0.90%	2,723,322
2010	24,877	8	0.92%	2,700,551
2000	23,982	8	1.20%	1,998,257
1990	17,938	7	1.49%	1,201,675
1980	13,917	6	1.74%	800,508
2000 to 2010 % change	3.7%	12		35.1%
1990 to 2010 % change	38.7%	11		124.7%
1980 to 2010 % change	78.8%	10		237.4%

Source: US Census Bureau

Components of Population Change in 2010/2011	Number	Rank in State	Percent of State	State
Net Domestic Migration (chg 2010/2011)	-320	14		-8,008
Net International Migration (chg 2010/2011)	53	8	0.55%	9,679
Natural Increase (births minus deaths)	99	6	0.57%	17,399
Births	341	8	0.93%	36,772
Deaths	242	8	1.25%	19,373

Source: US Census Bureau

Population Estimates by Age in 2010	Number	Rank in State	Pct Dist. in County	Pct Dist. in State
Preschool (0 to 4)	1,676	8	6.7%	6.9%
School Age (5 to 17)	4,598	8	18.5%	17.7%
College Age (18 to 24)	2,073	8	8.3%	9.2%
Young Adult (25 to 44)	5,953	8	23.9%	28.5%
Older Adult(45 to 64)	6,796	8	27.3%	25.6%
Older (65 plus)	3,781	8	15.2%	12.0%
Median Age	39.0	12		Median Age = 36.3

Sources: US Census Bureau; Median age calculated by the IBRC.

Population Estimates by Race and Hispanic Origin in 2010	Number	Rank in State	Pct Dist. in County	Pct Dist. in State
American Ind. or Alaskan Native Alone	1,129	6	4.5%	1.2%
Asian Alone	665	6	2.7%	7.2%
Black Alone	395	6	1.6%	8.1%
Native Hawaiian and Other Pac. Isl. Alone	51	8	0.2%	0.6%
White Alone	20,407	8	82.0%	66.2%
Two or More Race Groups	1,047	8	4.2%	4.7%
Hispanic or Latino (can be of any race)				
Non-Hispanic or Latino	21,868	8	87.9%	73.5%
Hispanic or Latino	3,009	9	12.1%	26.5%

Source: US Census Bureau

Hispanic or Latino Population in 2010 (can be of any race)	Number	Rank in State	Pct Dist. in County	Pct Dist. in State
Hispanic	3,009	9	12.1%	26.5%
Mexican	2,469	9	9.9%	20.0%
Cuban	20	8	0.1%	0.8%
Puerto Rican	116	8	0.5%	0.8%
Other	404	11	1.6%	4.9%
White, Not Hispanic (reporting white alone)	19,030	8	76.5%	54.1%

Source: US Census Bureau, American Community Survey, 5 Year Estimates

Households in 2010	Number	Rank in State	Pct All Hhlds in County	Pct All Hhlds in State
Total Households	9,671	8	100.0%	100.0%
Family Households	6,631	8	68.6%	65.3%
Married with Children	1,882	8	19.5%	19.6%
Married without Children	3,146	8	32.5%	26.4%
Single Parents	967	8	10.0%	10.4%
Other	636	8	6.6%	8.9%
Non-family Households	3,040	8	31.4%	34.7%
Living Alone	2,433	8	25.2%	25.7%
Average Household Size	2.50	7		
Average Family Household Size	3.00	8		

Source: US Census Bureau/font>

Housing Units in 2010	Number	Rank in State	Pct All HU in County	Pct All HU in State
2009 Housing Units (Census Estimate)	11,007	8		

Total Housing Units	10,826	<u>8</u>	100.0%	100.0%
Occupied	9,671	<u>8</u>	89.3%	85.7%
Owner Occupied	6,216	<u>8</u>	57.4%	50.4%
Renter Occupied	3,455	<u>8</u>	31.9%	35.3%
Vacant	1,155	<u>8</u>	10.7%	14.3%
For seasonal or recreational use	90	<u>13</u>	0.8%	2.8%

Source: US Census Bureau

Residential Building Permits in 2010	Units	Pct Dist. in County	Pct Dist. in State	Cost (\$000)
Total Permits Filed	3	100.0%	100.0%	\$308
Single Family	3	100.0%	83.2%	\$308
Two Family	0	0.0%	0.3%	\$0
Three & Four Family	0	0.0%	2.2%	\$0
Five Families and More	0	0.0%	14.3%	\$0

Source: US Census Bureau

Median Income	Number	Rank in State	Percent of State
Median household income in 2010	\$48,235	<u>11</u>	94.6%
Median household income in 2000 (adj. for inflation)	\$52,848	<u>10</u>	93.4%
5-year percent change 2000 to 2010	-8.7%	<u>11</u>	

Source: US Census Bureau

Per Capita Personal Income	Number	Rank in State	Percent of State
Per capita income - 2009	\$38,032	<u>6</u>	101.0%
Per capita income - 1999 (adj. for inflation)	\$30,956	<u>9</u>	81.1%
Per capita income - 1989 (adj. for inflation)	\$26,708	<u>16</u>	80.5%
Per capita income - 1979 (adj. for inflation)	\$22,603	<u>16</u>	71.9%
10-year % change	22.9%	<u>6</u>	
20-year % change	42.4%	<u>3</u>	
30-year % change	68.3%	<u>3</u>	

Source: US Bureau of Economic Analysis

Personal Income in 2009 (\$000)	Number	5-Year % Change (adj*)	Rank in % Change
Total Earnings by Place of Work	\$639,988	3.3%	<u>10</u>
Minus: Contributions for government social insurance	\$59,416	9.1%	<u>9</u>
Personal contributions for government social insurance	\$32,603	14.7%	<u>10</u>
Employer contributions for government social insurance	\$26,813	3.0%	<u>10</u>
Plus: Adjustment for residence	\$48,390	-28.2%	<u>10</u>
Equals: Net Earnings by Place of Residence	\$628,962	-0.6%	<u>11</u>
Plus: Dividends, rent, interest	\$139,688	7.0%	<u>8</u>
Plus: Transfer payments	\$178,225	38.0%	<u>13</u>
Equals: Personal Income by Place of Residence	\$946,875	6.1%	<u>13</u>

Source: US Bureau of Economic Analysis (*adj = Adjusted for Inflation)

Poverty Estimates	Number	Rank in State	5-Year % Change	Rank in % Change
Poverty rate in 2010	11.6	<u>10</u>	--	--
In 2000	9.8	<u>9</u>	18.4%	<u>9</u>
Poverty rate for children under 18 in 2010	18.2	<u>8</u>	--	--
In 2000	13.2	<u>9</u>	37.9%	<u>6</u>

Source: US Census Bureau

Labor Force Annual Averages in 2010	Number	% of State	State	Rank in State
Total Labor Force	13,153	0.97%	1,350,309	<u>8</u>
5-year % change	5.8%	-	9.9%	<u>14</u>
10-year % change	9.7%	-	27.0%	<u>11</u>
Employed	11,627	1.01%	1,149,537	<u>8</u>
5-year % change	-2.3%	-	-2.0%	<u>11</u>
10-year % change	3.5%	-	13.2%	<u>10</u>
Unemployed	1,526	0.76%	200,772	<u>8</u>
5-year % change	189.0%	-	265.6%	<u>10</u>
10-year % change	104.0%	-	321.6%	<u>14</u>
Unemployment Rate	11.6	77.85%	14.9	<u>11</u>
5-year % change	176.2%	-	231.1%	<u>8</u>
10-year % change	87.1%	-	231.1%	<u>15</u>

Source: US Bureau of Labor Statistics

Educational Attainment: ACS 2005-2010	Number	Percent of Population 25+	Rank of % in State	State % of Population 25+
Total Population 25 and Older	16,407	100.0%		100.0%
Less Than 9th Grade	622	3.8%	<u>11</u>	6.3%
9th to 12th, No Diploma	1,391	8.5%	<u>13</u>	9.4%
High School Graduate (incl. equiv.)	5,878	35.8%	<u>7</u>	29.7%
Some College, No Degree	4,436	27.0%	<u>7</u>	25.5%
Associate Degree	1,097	6.7%	<u>12</u>	7.3%
Bachelor's Degree	1,893	11.5%	<u>7</u>	14.4%
Graduate, Professional or Doctorate Degree	1,090	6.6%	<u>5</u>	7.4%

Source: US Census Bureau, American Community Survey, 2005-2009 5-Year Estimates

Educational Attainment: Census 2000	Number	Percent of Population 25+	Rank of % in State	State % of Population 25+
Total Population 25 and Older	15,167	100.0%		100.0%
Less Than 9th Grade	661	4.4%	<u>13</u>	6.4%
9th to 12th, No Diploma	1,598	10.5%	<u>15</u>	12.9%
High School Graduate (incl. equiv.)	4,620	30.5%	<u>11</u>	29.3%
Some College, No Degree	4,726	31.2%	<u>3</u>	27.0%
Associate Degree	1,027	6.8%	<u>5</u>	6.2%
Bachelor's Degree	1,750	11.5%	<u>5</u>	12.1%
Graduate or Professional Degree	785	5.2%	<u>6</u>	6.1%

Source: US Census Bureau

Workers Living in County in 2000	Number	Rank in State	Pct Dist. in County	Rank of Pct Dist.
Total	10,952	<u>8</u>	100.0%	
Working in County	9,270	<u>6</u>	84.6%	<u>9</u>
Working Elsewhere	1,682	<u>8</u>	15.4%	<u>9</u>

Source: US Census Bureau (Includes only domestic commuting for workers over 16 years old.)

People Working in County in 2000	Number	Rank in State	Pct Dist. in County	Rank of Pct Dist.
Total	10,317	<u>7</u>	100.0%	
Living in County	9,270	<u>6</u>	89.9%	<u>7</u>
Living Elsewhere	1,047	<u>10</u>	10.1%	<u>11</u>

Source: US Census Bureau (Includes only domestic commuting for workers over 16 years old.)

Commuting Flows in 2000	Number	Rank in State	Pct Dist.
Gross Flow (Living Elsewhere + Working Elsewhere)	2,729	<u>8</u>	100%
Net Flow (Living Elsewhere - Working Elsewhere)	-635	<u>14</u>	
Largest Single Inflow : Lyon County, NV	426		15.6%
Largest Single Outflow : Lyon County, NV	663		24.3%

Source: US Census Bureau (Includes only domestic commuting for workers over 16 years old.)

Annual Covered Employment and Wages Over Time (NAICS)	Establishments	Jobs	Average Wage Per Job (*adj)	Rank in State	Pct of State Avg Wage
2010	680	7,818	\$38,805	<u>14</u>	91.3%
2009	706	8,113	\$38,983	<u>13</u>	89.7%
2008	710	8,702	\$38,216	<u>16</u>	87.8%
2007	694	8,749	\$37,276	<u>15</u>	84.1%
2006	676	8,754	\$36,946	<u>16</u>	85.2%
2005	661	8,607	\$36,991	<u>16</u>	85.5%
2004	626	8,166	\$37,557	<u>15</u>	87.7%
2003	583	7,948	\$36,870	<u>15</u>	88.1%
2002	555	7,896	\$36,343	<u>16</u>	88.2%
2001	553	7,986	\$35,272	<u>17</u>	86.5%
2000	563	8,142	\$34,978	<u>16</u>	85.6%
10-Year Change	117	-324	\$3,827		
10-Year Percent Change	20.8%	-4.0%	10.9%		

Source: US Bureau of Labor Statistics(BLS)

*adj = Adjusted for Inflation; D = Non-Discloseable Data; N/A = Not Available; Note: Average wage may not match published numbers due to rounding.

Annual Industry Distribution of Jobs and Avg. Wage in 2010 (NAICS)	Establishments	Jobs	Pct Dist. in County	Annual Average Wage Per Job	Rank in State
Total Covered Employment and Wages	680	7,818	100.0%	\$38,805	<u>13</u>
Private	631	5,977	76.4%	\$37,476	<u>13</u>
Agri., forestry, hunting	32	D	D	D	N/A
Mining	1	D	D	D	N/A
Construction	89	420	5.4%	\$51,756	<u>5</u>
Manufacturing	27	269	3.4%	\$46,337	<u>6</u>
Wholesale trade	29	163	2.1%	\$28,691	<u>10</u>
Retail trade	78	954	12.2%	\$25,954	<u>6</u>
Transportation, warehousing	36	740	9.5%	\$64,447	<u>1</u>
Utilities	8	111	1.4%	\$96,152	<u>1</u>
Information	8	119	1.5%	\$40,122	<u>8</u>
Finance and Insurance	32	152	1.9%	\$36,707	<u>6</u>
Real Estate, rental, leasing	32	115	1.5%	\$17,526	<u>10</u>
Professional, technical services	52	245	3.1%	\$51,160	<u>9</u>
Mgmt. of companies, enterprises	5	4	0.1%	\$45,744	<u>9</u>
Administrative, waste services	42	478	6.1%	\$40,619	<u>2</u>
Educational services	8	31	0.4%	\$26,363	<u>4</u>
Health care, social assistance	52	983	12.6%	\$39,881	<u>9</u>
Arts, entertainment, recreation	20	339	4.3%	\$20,535	<u>9</u>

Accommodation and food services	51	628	8.0%	\$14,448	10
Other services, exc. public admin.	42	178	2.3%	\$20,587	15
Public administration	32	814	10.4%	\$47,080	11

Source: US Bureau of Labor Statistics(BLS)

D = Not shown to avoid disclosure of confidential information.

N/A = This item is not available.

Note: Average wage may not match published numbers due to rounding.

BEA Major Sectors (NAICS) in 2009 (by place of work)		Earnings (\$000)	Avg Earnings Per Job	Rank in State	Jobs	Pct Dist. in County	Pct Dist. in State
Total by place of work		\$639,988	\$29,106	17	21,988	100.0%	100.0%
Wage and Salary		\$382,777	\$40,237	12	9,513	43.3%	77.8%
Proprietors		\$127,920	\$10,254	12	12,475	56.7%	22.2%
Farm		-\$4,672	-\$9,693	15	482	2.2%	0.2%
Nonfarm		\$132,592	\$11,056	10	11,993	54.5%	22.1%
Farm		\$5,278	\$7,529	16	701	3.2%	0.3%
Nonfarm		\$634,710	\$29,817	16	21,287	96.8%	99.7%
Private		\$419,136	\$22,836	16	18,354	83.5%	88.6%
Forestry, fishing, etc. *		D	N/A	N/A	D	D	0.1%
21	Mining	D	N/A	N/A	D	D	1.1%
22	Utilities	\$13,751	\$114,592	3	120	0.5%	0.3%
23	Construction	\$42,771	\$31,800	8	1,345	6.1%	6.5%
31-33	Manufacturing	\$18,687	\$38,137	9	490	2.2%	2.9%
42	Wholesale Trade	\$17,425	\$44,003	7	396	1.8%	2.6%
44-45	Retail Trade	\$39,520	\$23,850	10	1,657	7.5%	10.1%
48 49	Trans. and warehousing	\$54,304	\$56,041	5	969	4.4%	3.5%
51	Information	\$7,144	\$24,806	12	288	1.3%	1.2%
52	Finance and insurance	\$19,110	\$9,745	13	1,961	8.9%	7.0%
53	Real Estate and rental and leasing	\$14,957	\$6,271	9	2,385	10.8%	6.3%
54	Professional, technical services	\$32,236	\$24,039	13	1,341	6.1%	5.3%
55	Management of companies, enterprises	-\$202	-\$4,698	7	43	0.2%	1.3%
56	Administrative and waste services	\$27,322	\$21,295	7	1,283	5.8%	6.0%
61	Educational services	\$2,808	\$11,651	6	241	1.1%	0.9%
62	Health care, social assistance	\$61,002	\$39,715	6	1,536	7.0%	6.9%
71	Arts, entertainment, and recreation	\$11,012	\$7,827	11	1,407	6.4%	3.2%
72	Accommodation and food services	\$13,640	\$14,047	12	971	4.4%	19.0%
81	Other services, exc. public admin.	\$40,304	\$25,428	10	1,585	7.2%	4.3%
NA	Gov. and gov. enterprises	\$215,574	\$73,499	2	2,933	13.3%	11.1%

Source: US Bureau of Economic Analysis(BEA)

D = Not shown to avoid disclosure of confidential information, but the estimates for this item are included in the totals.

L = Less than 10 jobs, but the estimates for this item are included in the totals.

N/A = Not available or not applicable.

* = "Other" consists of the number of jobs held by U.S. residents employed by international organizations and foreign embassies and consulates in the United States.

[Home](#) | [About STATS America](#) | [Contact Us](#) | [Report a Problem](#) |



STATS America is a service of the Indiana Business Research Center at Indiana University's Kelley School of Business: www.ibrc.indiana.edu. It was developed with support from the U.S. Department of Commerce, Economic Development Administration and Indiana University.

Updated: April 06, 2012 at 12:26



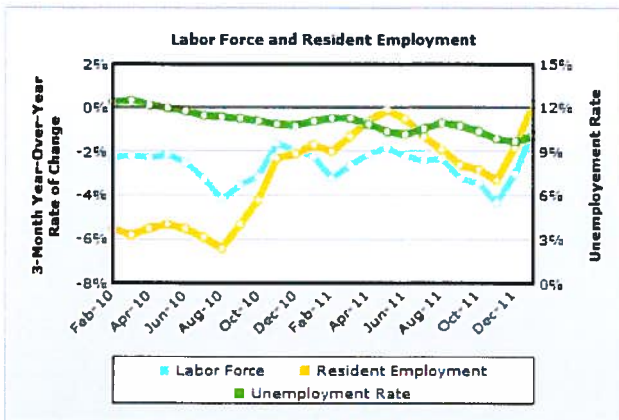
Market at a Glance



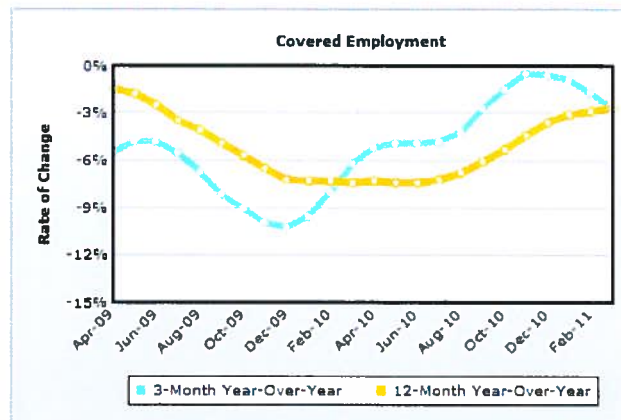
Churchill County, NV
Prepared by: PD&R / Economic & Market Analysis Division (EMAD)
Pacific Regional Office

Created on: April 23, 2012

ECONOMIC CONDITIONS



Data Source: U.S. Bureau of Labor Statistics



Data Source: U.S. Bureau of Labor Statistics

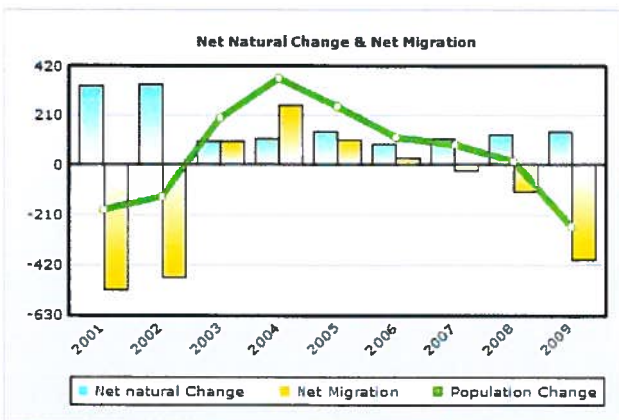
	3-Month Average			3-Month Year-Over-Year Change			
	January 2010	January 2011	January 2012	January 2010 to January 2011		January 2011 to January 2012	
	Number	Percent	Number	Number	Percent	Number	Percent
Labor Force	13,095	12,801	12,681	-294	-2.2	-120	-0.9
Resident Employment	11,575	11,377	11,402	-198	-1.7	25	0.2
Unemployment Rate (%)	11.6	11.1	10.1	n/a	n/a	n/a	n/a
	March 2009	March 2010	March 2011	March 2009 to March 2010		March 2010 to March 2011	
Covered Employment	8,235	7,724	7,513	-511	-6.2	-211	-2.7

Data Source: U.S. Bureau of Labor Statistics

POPULATION & HOUSEHOLDS

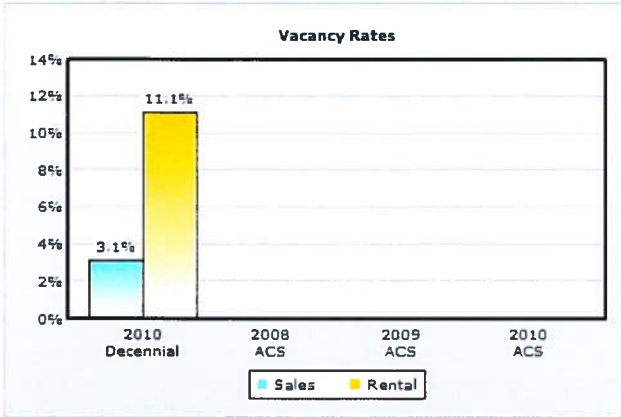
	Decennial Census				ACS & Population Estimates Program						
	April 2000	April 2010	Average Annual Change 2000 to 2010		July 2008	July 2009	July 2010	2008 to 2009		2009 to 2010	
	Number	Number	Number	Percent	Number	Number	Number	Number	Percent	Number	Percent
Population	23,982	24,877	90	0.4	25,049	25,067	24,810	18	0.1	-257	-1
Households	8,912	9,671	76	0.9	8,694	8,629	8,933	-65	-0.7	304	3.5

Data Source: 1 - 2000 Census; 2010 Census; U.S. Census Bureau Population Estimates
2 - 2000 Census; 2010 Census; 2008, 2009 and 2010 American Community Surveys (3 - Year)

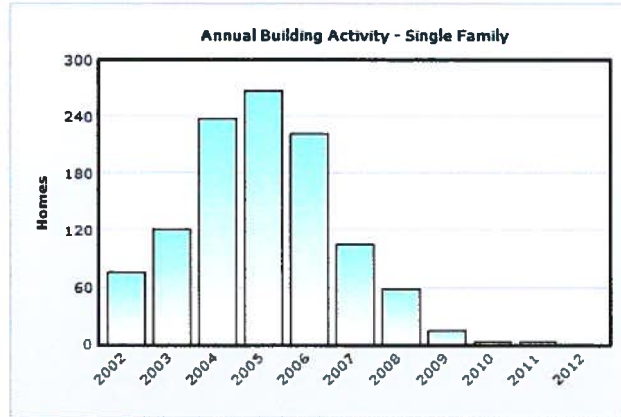


Data Source: U.S. Census Bureau Population Estimates

Notes: 1 - Values in chart reflect July year-to-year changes
2 - Net Migration includes residual population change



Data Source: 2010 Census; 2008, 2009 and 2010 American Community Surveys (3 - Year)

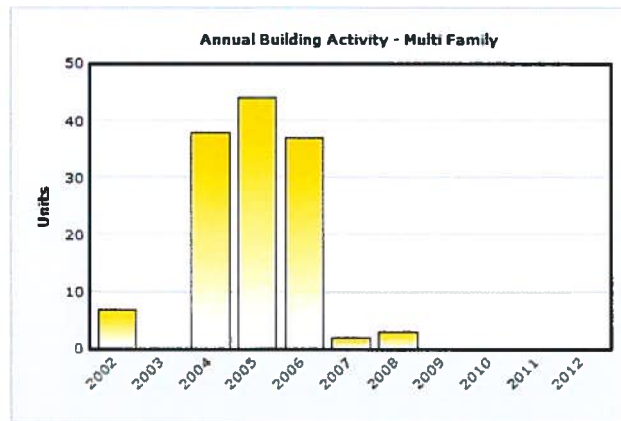


Data Source: U.S. Census Bureau, Building Permits Survey; adjustments by analyst

Note: Data for 2011 and 2012 is preliminary, through January 2012

Housing Inventory by Tenure				
	2010 Decennial	2008 ACS	2009 ACS	2010 ACS
Total Housing Units	10,826	10,794	10,969	10,843
Occupied	9,671	8,694	8,629	8,933
Owners	6,216	5,542	5,861	5,950
% Owners	64.3	63.7	67.9	66.6
Renters	3,455	3,152	2,768	2,983
% Renters	35.7	36.3	32.1	33.4
Total Vacant	1,155	2,100	2,340	1,910
Available for Sale	198	n/a	n/a	n/a
Available for Rent	432	n/a	n/a	n/a
Other Vacant	525	n/a	n/a	n/a

Data Source: 2010 Census; 2008, 2009 and 2010 American Community Surveys (3 - Year)



Data Source: U.S. Census Bureau, Building Permits Survey; adjustments by analyst

Note: Data for 2011 and 2012 is preliminary, through January 2012

Churchill County, Nevada

US Census Quick Facts
<http://quickfacts.census.gov>

People QuickFacts	Churchill County	Nevada
Population, 2011 estimate	NA	2,723,322
Population, 2010	24,877	2,700,551
Population, percent change, 2000 to 2010	3.7%	35.1%
Population, 2000	23,982	1,998,257
Persons under 5 years, percent, 2010	6.7%	6.9%
Persons under 18 years, percent, 2010	25.2%	24.6%
Persons 65 years and over, percent, 2010	15.2%	12.0%
Female persons, percent, 2010	49.7%	49.5%
White persons, percent, 2010 (a)	82.0%	66.2%
Black persons, percent, 2010 (a)	1.6%	8.1%
American Indian and Alaska Native persons, percent, 2010 (a)	4.5%	1.2%
Asian persons, percent, 2010 (a)	2.7%	7.2%
Native Hawaiian and Other Pacific Islander, percent, 2010 (a)	0.2%	0.6%
Persons reporting two or more races, percent, 2010	4.2%	4.7%
Persons of Hispanic or Latino origin, percent, 2010 (b)	12.1%	26.5%
White persons not Hispanic, percent, 2010	76.5%	54.1%
Living in same house 1 year & over, 2006-2010	85.7%	78.2%
Foreign born persons, percent, 2006-2010	5.8%	19.3%
Language other than English spoken at home, pct age 5+, 2006-2010	10.4%	28.2%
High school graduates, percent of persons age 25+, 2006-2010	87.7%	84.3%
Bachelor's degree or higher, pct of persons age 25+, 2006-2010	18.2%	21.8%
Veterans, 2006-2010	3,384	234,081
Mean travel time to work (minutes), workers age 16+, 2006-2010	17.9	23.6
Housing units, 2010	10,826	1,173,814
Homeownership rate, 2006-2010	64.5%	60.1%
Housing units in multi-unit structures, percent, 2006-2010	16.9%	29.4%
Median value of owner-occupied housing units, 2006-2010	\$188,300	\$254,200
Households, 2006-2010	8,801	979,621
Persons per household, 2006-2010	2.80	2.65
Per capita money income in past 12 months (2010 dollars) 2006-2010	\$22,997	\$27,589
Median household income 2006-2010	\$51,597	\$55,726
Persons below poverty level, percent, 2006-2010	8.8%	11.9%

Business QuickFacts	Churchill County	Nevada
Private nonfarm establishments, 2009	536	59,785 ²
Private nonfarm employment, 2009	5,577	1,042,166 ²
Private nonfarm employment, percent change 2000-2009	1.8%	15.4% ²
Nonemployer establishments, 2009	1,179	166,864
<hr/>		
Total number of firms, 2007	1,601	221,260
Black-owned firms, percent, 2007	S	3.9%
American Indian- and Alaska Native-owned firms, percent, 2007	4.1%	0.8%
Asian-owned firms, percent, 2007	F	7.9%
Native Hawaiian and Other Pacific Islander-owned firms, percent, 2007	F	0.3%
Hispanic-owned firms, percent, 2007	S	8.1%
Women-owned firms, percent, 2007	26.4%	28.6%
<hr/>		
Manufacturers shipments, 2007 (\$1000)	0 ¹	15,735,787
Merchant wholesaler sales, 2007 (\$1000)	33,256	19,255,893
Retail sales, 2007 (\$1000)	265,255	37,433,983
Retail sales per capita, 2007	\$10,725	\$14,579
Accommodation and food services sales, 2007 (\$1000)	33,010	28,815,533
Building permits, 2010	3	6,443
Federal spending, 2009	392,659	19,893,713 ²
Geography QuickFacts	Churchill County	Nevada
Land area in square miles, 2010	4,930.46	109,781.18
Persons per square mile, 2010	5.0	24.6
FIPS Code	001	32
Metropolitan or Micropolitan Statistical Area	Fallon, NV Micro Area	

1: Counties with 500 employees or less are excluded.

2: Includes data not distributed by county.

Population estimates for counties will be available in April, 2012 and for cities in June, 2012.

(a) Includes persons reporting only one race.

(b) Hispanics may be of any race, so also are included in applicable race categories.

D: Suppressed to avoid disclosure of confidential information

F: Fewer than 100 firms

FN: Footnote on this item for this area in place of data

NA: Not available

S: Suppressed; does not meet publication standards

X: Not applicable

Z: Value greater than zero but less than half unit of measure shown

Source U.S. Census Bureau: State and County QuickFacts. Data derived from Population Estimates, American Community Survey, Census of Population and Housing, State and County Housing Unit Estimates, County Business Patterns, Nonemployer Statistics, Economic Census, Survey of Business Owners, Building Permits, Consolidated Federal Funds Report

Last Revised: Tuesday, 31-Jan-2012 16:54:29 EST



	Churchill County	Error Margin	National Benchmark*	Nevada	Rank (of 16)
Health Outcomes					7
Mortality					11
Premature death	9,645	8,321-10,969	5,466	7,927	
Morbidity					2
Poor or fair health	16%	13-19%	10%	18%	
Poor physical health days	3.9	3.2-4.7	2.6	3.7	
Poor mental health days	4.0	2.9-5.0	2.3	3.7	
Low birthweight	6.2%	5.3-7.2%	6.0%	8.1%	
Health Factors					8
Health Behaviors					10
Adult smoking	22%	18-26%	14%	22%	
Adult obesity	29%	25-33%	25%	26%	
Physical inactivity	27%	23-31%	21%	24%	
Excessive drinking	18%	14-22%	8%	19%	
Motor vehicle crash death rate	30	21-38	12	17	
Sexually transmitted infections	213		84	386	
Teen birth rate	55	49-61	22	53	
Clinical Care					12
Uninsured	23%	20-25%	11%	25%	
Primary care physicians	992:1		631:1	1,153:1	
Preventable hospital stays	90	80-101	49	59	
Diabetic screening	74%	65-83%	89%	76%	
Mammography screening	57%	48-66%	74%	60%	
Social & Economic Factors					7
High school graduation	93%			70%	
Some college	55%	47-62%	68%	54%	
Unemployment	11.6%		5.4%	14.9%	
Children in poverty	18%	13-24%	13%	21%	
Inadequate social support	23%	19-28%	14%	23%	
Children in single-parent households	27%	17-37%	20%	34%	
Violent crime rate	227		73	728	
Physical Environment					3
Air pollution-particulate matter days	0		0	1	
Air pollution-ozone days	0		0	24	
Access to recreational facilities	20		16	7	
Limited access to healthy foods	1%		0%	4%	
Fast food restaurants	54%		25%	56%	

* 90th percentile, i.e., only 10% are better

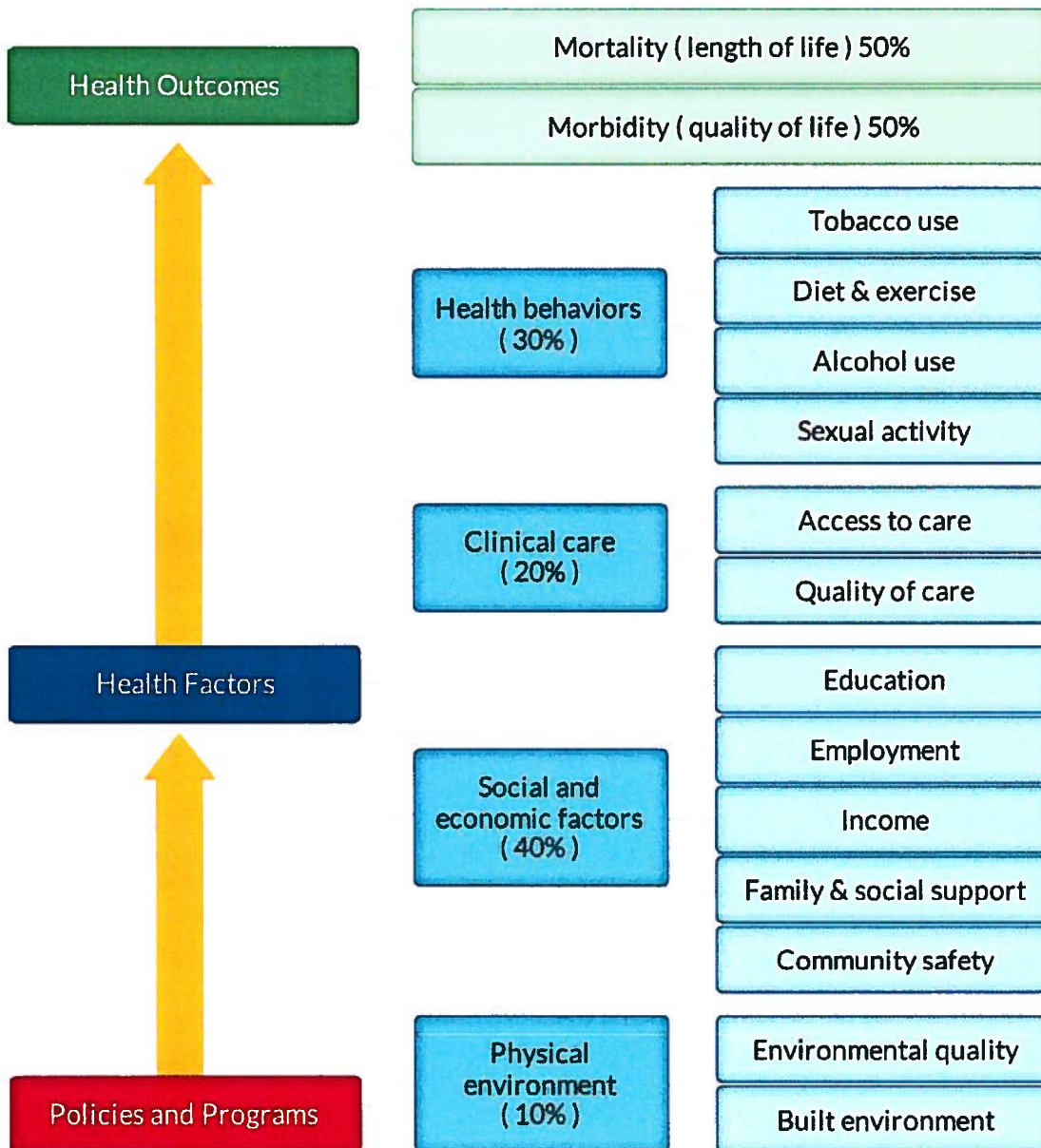
Note: Blank values reflect unreliable or missing data

2012

County Health Rankings

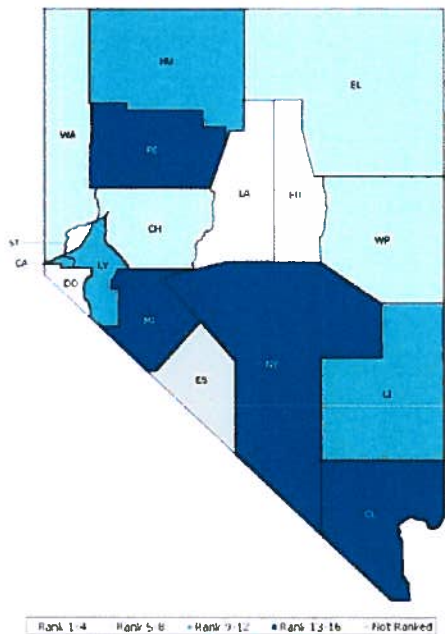
The 2012 *County Health Rankings* report ranks Nevada counties according to their summary measures of **health outcomes** and **health factors**. Counties also receive a rank for mortality, morbidity, health behaviors, clinical care, social and economic factors, and the physical environment. The figure below depicts the structure of the *Rankings* model; those having high ranks (e.g., 1 or 2) are estimated to be the “healthiest.”

Our summary **health outcomes** rankings are based on an equal weighting of mortality and morbidity measures. The summary **health factors** rankings are based on weighted scores of four types of factors: behavioral, clinical, social and economic, and environmental. The weights for the factors (shown in parentheses in the figure) are based upon a review of the literature and expert input, but represent just one way of combining these factors.



County Health Rankings model ©2012 UWPHI

HEALTH FACTORS



County	Rank	County	Rank	County	Rank	County	Rank
Carson City	9	Esmeralda	NR	Lyon	12	Washoe	5
Churchill	8	Eureka	3	Mineral	16	White Pine	6
Clark	13	Humboldt	11	Nye	15		
Douglas	1	Lander	2	Pershing	14		
Elko	7	Lincoln	10	Storey	4		

Summary Health Outcomes & Health Factors Rankings

Counties receive two summary ranks:

- Health Outcomes
- Health Factors

Health outcomes represent how healthy a county is while health factors represent what influences the health of the county.

Each of these ranks represents a weighted summary of a number of measures.

Rank	Health Outcomes	Rank	Health Factors
1	Douglas	1	Douglas
2	Elko	2	Lander
3	Lincoln	3	Eureka
4	Washoe	4	Storey
5	Lyon	5	Washoe
6	Pershing	6	White Pine
7	Churchill	7	Elko
8	Humboldt	8	Churchill
9	Storey	9	Carson City
10	Clark	10	Lincoln
11	Eureka	11	Humboldt
12	Carson City	12	Lyon
13	White Pine	13	Clark
14	Lander	14	Pershing
15	Nye	15	Nye
16	Mineral	16	Mineral

Not Ranked: Esmeralda

2012 County Health Rankings: Measures, Data Sources, and Years of Data

	Measure	Data Source	Years of Data
HEALTH OUTCOMES			
Mortality	Premature death	National Center for Health Statistics	2006-2008
Morbidity	Poor or fair health	Behavioral Risk Factor Surveillance System	2004-2010
	Poor physical health days	Behavioral Risk Factor Surveillance System	2004-2010
	Poor mental health days	Behavioral Risk Factor Surveillance System	2004-2010
	Low birthweight	National Center for Health Statistics	2002-2008
HEALTH FACTORS			
HEALTH BEHAVIORS			
Tobacco Use	Adult smoking	Behavioral Risk Factor Surveillance System	2004-2010
Diet and Exercise	Adult obesity	National Center for Chronic Disease Prevention and Health Promotion	2009
	Physical inactivity	National Center for Chronic Disease Prevention and Health Promotion	2009
Alcohol Use	Excessive drinking	Behavioral Risk Factor Surveillance System	2004-2010
	Motor vehicle crash death rate	National Center for Health Statistics	2002-2008
Sexual Activity	Sexually transmitted infections	National Center for Hepatitis, HIV, STD and TB Prevention	2009
	Teen birth rate	National Center for Health Statistics	2002-2008
CLINICAL CARE			
Access to Care	Uninsured	Small Area Health Insurance Estimates	2009
	Primary care physicians	Health Resources & Services Administration	2009
Quality of Care	Preventable hospital stays	Medicare/Dartmouth Institute	2009
	Diabetic screening	Medicare/Dartmouth Institute	2009
	Mammography screening	Medicare/Dartmouth Institute	2009
SOCIAL AND ECONOMIC FACTORS			
Education	High school graduation	National Center for Education Statistics and state-specific sources ¹	2008-2010
	Some college	American Community Survey	2006-2010
Employment	Unemployment	Bureau of Labor Statistics	2010
Income	Children in poverty	Small Area Income and Poverty Estimates	2010
Family and Social Support	Inadequate social support	Behavioral Risk Factor Surveillance System	2006-2010
	Children in single-parent households	American Community Survey	2006-2010
Community Safety	Violent crime rate ²	Federal Bureau of Investigation	2007-2009
PHYSICAL ENVIRONMENT			
Environmental Quality ³	Air pollution-particulate matter days	U.S. Environmental Protection Agency	2007
	Air pollution-ozone days	U.S. Environmental Protection Agency	2007
Built Environment	Access to recreational facilities	Census County Business Patterns	2009
	Limited access to healthy foods ⁴	U.S. Department of Agriculture	2006
	Fast food restaurants	Census County Business Patterns	2009

¹ NCES used for AK, AL, AR, CA, CT, FL, HI, ID, KY, MT, ND, NJ, OK, SD and TN

² State data source for IL.

³ Not available for AK and HI.

⁴ Access to Healthy Foods (2009) from Census Zip Code Business Patterns for AK and HI.