

Carson City, NV (county equivalent) in Profile

Part of: Carson City NV, Metropolitan Area



Carson City is one of 17 counties and county equivalent cities in Nevada. It has 143.4 sq. miles in land area and a population density of 386.6 per square mile. On the most recent census form, 97.1% of the population reported only one race, with 1.9% of these reporting African-American. The population of this city is 21.3% Hispanic (of any race). The average household size is 2.40 persons compared to an average family size of 3.00 persons.

In 2010 Public administration was the largest of 20 major sectors. It had an average wage per job of \$56,457. Per capita income grew by 4.8% between 1999 and 2009 (adjusted for inflation).

People & Income Overview (By Place of Residence)	Value	Rank in State	Industry Overview (2010) (By Place of Work)	Value	Rank in State
Population (2011)	55,439	3	Covered Employment	27,688	3
Growth (%) since 2010 Census	0.3%	7	Avg wage per job	\$43,882	6
Households (2010)	21,427	3	Manufacturing - % all jobs in County	9.3%	4
Labor Force (persons) (2010)	28,632	3	Avg wage per job	\$52,571	3
Unemployment Rate (2010)	14.1	7	Transportation & Warehousing - % all jobs in County	0.3%	15
Per Capita Personal Income (2009)	\$40,218	5	Avg wage per job	\$60,528	2
Median Household Income (2010)	\$49,386	9	Health Care, Social Assist. - % all jobs in County	9.0%	3
Poverty Rate (2010)	15.1	5	Avg wage per job	\$47,301	5
H.S. Diploma or More - % of Adults 25+ (2010 ACS 5yr)	88.0	4	Finance and Insurance - % all jobs in County	2.9%	3
Bachelor's Deg. or More - % of Adults 25+ (2010 ACS 5yr)	21.6	4	Avg wage per job	\$46,926	4

Population Over Time	Number	Rank in State	Percent of State	State
2011	55,439	3	2.04%	2,723,322
2010	55,274	3	2.05%	2,700,551
2000	52,457	3	2.63%	1,998,257
1990	40,443	3	3.37%	1,201,675
1980	32,022	3	4.00%	800,508
2000 to 2010 % change	5.4%	12		35.1%
1990 to 2010 % change	36.7%	12		124.7%
1980 to 2010 % change	72.6%	11		237.4%

Source: US Census Bureau

Components of Population Change in 2010/2011	Number	Rank in State	Percent of State	State
Net Domestic Migration (chg 2010/2011)	74	1		-8,008
Net International Migration (chg 2010/2011)	112	4	1.16%	9,679
Natural Increase (births minus deaths)	48	8	0.28%	17,399
Births	662	4	1.80%	36,772
Deaths	614	3	3.17%	19,373

Source: US Census Bureau

Population Estimates by Age in 2010	Number	Rank in State	Pct Dist. in County	Pct Dist. in State
Preschool (0 to 4)	3,223	5	5.8%	6.9%
School Age (5 to 17)	8,592	5	15.5%	17.7%
College Age (18 to 24)	4,675	3	8.5%	9.2%
Young Adult (25 to 44)	13,618	3	24.6%	28.5%
Older Adult(45 to 64)	16,033	3	29.0%	25.6%
Older (65 plus)	9,133	5	16.5%	12.0%
Median Age	41.7	7		Median Age = 36.3

Sources: US Census Bureau; Median age calculated by the IBRC.

Population Estimates by Race and Hispanic Origin in 2010	Number	Rank in State	Pct Dist. in County	Pct Dist. in State
American Ind. or Alaskan Native Alone	1,306	4	2.4%	1.2%
Asian Alone	1,181	3	2.1%	7.2%
Black Alone	1,054	3	1.9%	8.1%
Native Hawaiian and Other Pac. Isl. Alone	101	5	0.2%	0.6%
White Alone	44,807	3	81.1%	66.2%
Two or More Race Groups	1,620	4	2.9%	4.7%
Hispanic or Latino (can be of any race)				
Non-Hispanic or Latino	43,497	4	78.7%	73.5%
Hispanic or Latino	11,777	3	21.3%	26.5%

Source: US Census Bureau

Hispanic or Latino Population in 2010 (can be of any race)	Number	Rank in State	Pct Dist. in County	Pct Dist. in State
Hispanic	11,777	3	21.3%	26.5%
Mexican	9,215	4	16.7%	20.0%
Cuban	65	4	0.1%	0.8%
Puerto Rican	167	6	0.3%	0.8%
Other	2,330	3	4.2%	4.9%
White, Not Hispanic (reporting white alone)	39,083	5	70.7%	54.1%

Source: US Census Bureau, American Community Survey, 5 Year Estimates

Households in 2010	Number	Rank in State	Pct All Hhlds in County	Pct All Hhlds in State
Total Households	21,427	3	100.0%	100.0%
Family Households	13,311	5	62.1%	65.3%
Married with Children	3,566	5	16.6%	19.6%
Married without Children	5,986	6	27.9%	26.4%
Single Parents	2,054	3	9.6%	10.4%
Other	1,705	3	8.0%	8.9%
Non-family Households	8,116	3	37.9%	34.7%
Living Alone	6,505	3	30.4%	25.7%
Average Household Size	2.40	10		
Average Family Household Size	3.00	8		

Source: US Census Bureau/font>

Housing Units in 2010	Number	Rank in State	Pct All HU in County	Pct All HU in State
2009 Housing Units (Census Estimate)	22,958	4		

Total Housing Units	23,534	4	100.0%	100.0%
Occupied	21,427	3	91.0%	85.7%
Owner Occupied	12,728	6	54.1%	50.4%
Renter Occupied	8,699	3	37.0%	35.3%
Vacant	2,107	7	9.0%	14.3%
For seasonal or recreational use	145	10	0.6%	2.8%

Source: US Census Bureau

Residential Building Permits in 2010	Units	Pct Dist. in County	Pct Dist. in State	Cost (\$000)
Total Permits Filed	71	100.0%	100.0%	\$9,963
Single Family	11	15.5%	83.2%	\$3,380
Two Family	2	2.8%	0.3%	\$291
Three & Four Family	0	0.0%	2.2%	\$0
Five Families and More	58	81.7%	14.3%	\$6,292

Source: US Census Bureau

Median Income	Number	Rank in State	Percent of State
Median household income in 2010	\$49,386	9	96.9%
Median household income in 2000 (adj. for inflation)	\$54,083	9	95.6%
5-year percent change 2000 to 2010	-8.7%	11	

Source: US Census Bureau

Per Capita Personal Income	Number	Rank in State	Percent of State
Per capita income - 2009	\$40,218	5	106.8%
Per capita income - 1999 (adj. for inflation)	\$38,386	3	100.5%
Per capita income - 1989 (adj. for inflation)	\$33,807	4	102.0%
Per capita income - 1979 (adj. for inflation)	\$31,870	5	101.4%
10-year % change	4.8%	13	
20-year % change	19.0%	8	
30-year % change	26.2%	8	

Source: US Bureau of Economic Analysis

Personal Income in 2009 (\$000)	Number	5-Year % Change (adj*)	Rank in % Change
Total Earnings by Place of Work	\$1,814,800	-4.8%	14
Minus: Contributions for government social insurance	\$156,675	-4.6%	15
Personal contributions for government social insurance	\$84,938	-1.5%	15
Employer contributions for government social insurance	\$71,737	-8.0%	13
Plus: Adjustment for residence	-\$387,616	35.4%	2
Equals: Net Earnings by Place of Residence	\$1,270,509	-12.7%	17
Plus: Dividends, rent, interest	\$532,558	3.7%	9
Plus: Transfer payments	\$415,997	39.2%	12
Equals: Personal Income by Place of Residence	\$2,219,064	-2.2%	16

Source: US Bureau of Economic Analysis (*adj = Adjusted for Inflation)

Poverty Estimates	Number	Rank in State	5-Year % Change	Rank in % Change
Poverty rate in 2010	15.1	5	--	--
In 2000	9.5	11	58.9%	3
Poverty rate for children under 18 in 2010	21.5	5	--	--
In 2000	13.2	9	62.9%	3

Source: US Census Bureau

Labor Force Annual Averages in 2010	Number	% of State	State	Rank in State
Total Labor Force	28,632	2.12%	1,350,309	<u>3</u>
5-year % change	5.1%	-	9.9%	<u>16</u>
10-year % change	8.2%	-	27.0%	<u>12</u>
Employed	24,608	2.14%	1,149,537	<u>4</u>
5-year % change	-5.0%	-	-2.0%	<u>14</u>
10-year % change	-3.4%	-	13.2%	<u>13</u>
Unemployed	4,024	2.00%	200,772	<u>4</u>
5-year % change	197.6%	-	265.6%	<u>8</u>
10-year % change	306.9%	-	321.6%	<u>5</u>
Unemployment Rate	14.1	94.63%	14.9	<u>7</u>
5-year % change	182.0%	-	231.1%	<u>7</u>
10-year % change	281.1%	-	231.1%	<u>3</u>

Source: US Bureau of Labor Statistics

Educational Attainment: ACS 2005-2010	Number	Percent of Population 25+	Rank of % in State	State % of Population 25+
Total Population 25 and Older	38,012	100.0%		100.0%
Less Than 9th Grade	1,443	3.8%	<u>11</u>	6.3%
9th to 12th, No Diploma	3,121	8.2%	<u>15</u>	9.4%
High School Graduate (incl. equiv.)	12,186	32.1%	<u>11</u>	29.7%
Some College, No Degree	9,999	26.3%	<u>10</u>	25.5%
Associate Degree	3,052	8.0%	<u>6</u>	7.3%
Bachelor's Degree	4,791	12.6%	<u>6</u>	14.4%
Graduate, Professional or Doctorate Degree	3,420	9.0%	<u>3</u>	7.4%

Source: US Census Bureau, American Community Survey, 2005-2009 5-Year Estimates

Educational Attainment: Census 2000	Number	Percent of Population 25+	Rank of % in State	State % of Population 25+
Total Population 25 and Older	35,953	100.0%		100.0%
Less Than 9th Grade	1,852	5.2%	<u>9</u>	6.4%
9th to 12th, No Diploma	4,452	12.4%	<u>13</u>	12.9%
High School Graduate (incl. equiv.)	10,021	27.9%	<u>15</u>	29.3%
Some College, No Degree	10,580	29.4%	<u>6</u>	27.0%
Associate Degree	2,409	6.7%	<u>6</u>	6.2%
Bachelor's Degree	4,265	11.9%	<u>4</u>	12.1%
Graduate or Professional Degree	2,374	6.6%	<u>3</u>	6.1%

Source: US Census Bureau

Workers Living in County in 2000	Number	Rank in State	Pct Dist. in County	Rank of Pct Dist.
Total	23,282	<u>3</u>	100.0%	
Working in County	17,667	<u>4</u>	75.9%	<u>11</u>
Working Elsewhere	5,615	<u>5</u>	24.1%	<u>7</u>

Source: US Census Bureau (Includes only domestic commuting for workers over 16 years old.)

People Working in County in 2000	Number	Rank in State	Pct Dist. in County	Rank of Pct Dist.
Total	28,291	<u>3</u>	100.0%	
Living in County	17,667	<u>4</u>	62.4%	<u>15</u>
Living Elsewhere	10,624	<u>3</u>	37.6%	<u>3</u>

Source: US Census Bureau (Includes only domestic commuting for workers over 16 years old.)

Commuting Flows in 2000	Number	Rank in State	Pct Dist.
Gross Flow (Living Elsewhere + Working Elsewhere)	16,239	3	100%
Net Flow (Living Elsewhere - Working Elsewhere)	5,009	3	
Largest Single Inflow : Douglas County, NV	3,415		21.0%
Largest Single Outflow : Washoe County, NV	3,106		19.1%

Source: US Census Bureau (Includes only domestic commuting for workers over 16 years old.)

Annual Covered Employment and Wages Over Time (NAICS)	Establishments	Jobs	Average Wage Per Job (*adj)	Rank in State	Pct of State Avg Wage
2010	2,161	27,688	\$43,882	7	103.2%
2009	2,331	28,514	\$45,263	5	104.2%
2008	2,427	30,663	\$44,419	4	102.0%
2007	2,451	31,875	\$44,202	7	99.7%
2006	2,462	31,812	\$43,389	7	100.1%
2005	2,502	31,989	\$42,906	8	99.1%
2004	2,185	31,590	\$42,479	8	99.2%
2003	2,036	30,810	\$41,547	8	99.2%
2002	1,881	30,868	\$40,791	10	99.0%
2001	1,848	31,309	\$39,952	10	98.0%
2000	1,935	31,014	\$39,807	10	97.4%
10-Year Change	226	-3,326	\$4,075		
10-Year Percent Change	11.7%	-10.7%	10.2%		

Source: US Bureau of Labor Statistics(BLS)

*adj = Adjusted for Inflation; D = Non-Discloseable Data; N/A = Not Available; Note: Average wage may not match published numbers due to rounding.

Annual Industry Distribution of Jobs and Avg. Wage in 2010 (NAICS)	Establishments	Jobs	Pct Dist. in County	Annual Average Wage Per Job	Rank in State
Total Covered Employment and Wages	2,161	27,688	100.0%	\$43,882	6
Private	1,966	17,108	61.8%	\$38,545	12
Agri., forestry, hunting	1	D	D	D	N/A
Mining	2	D	D	D	N/A
Construction	202	D	D	D	N/A
Manufacturing	125	2,573	9.3%	\$52,571	3
Wholesale trade	90	496	1.8%	\$51,008	6
Retail trade	211	2,892	10.4%	\$29,818	2
Transportation, warehousing	48	91	0.3%	\$60,528	2
Utilities	3	D	D	D	N/A
Information	25	253	0.9%	\$52,836	4
Finance and Insurance	121	813	2.9%	\$46,926	4
Real Estate, rental, leasing	101	338	1.2%	\$35,265	3
Professional, technical services	271	840	3.0%	\$53,954	7
Mgmt. of companies, enterprises	30	192	0.7%	\$90,648	7
Administrative, waste services	151	966	3.5%	\$29,356	4
Educational services	23	65	0.2%	\$38,779	2
Health care, social assistance	222	2,497	9.0%	\$47,301	5
Arts, entertainment, recreation	47	1,219	4.4%	\$24,780	4

Accommodation and food services	152	2,079	7.5%	\$16,019	9
Other services, exc. public admin.	145	661	2.4%	\$33,336	6
Public administration	178	6,581	23.8%	\$56,457	5

Source: US Bureau of Labor Statistics(BLS)

D = Not shown to avoid disclosure of confidential information.

N/A = This item is not available.

Note: Average wage may not match published numbers due to rounding.

BEA Major Sectors (NAICS) in 2009 (by place of work)		Earnings (\$000)	Avg Earnings Per Job	Rank in State	Jobs	Pct Dist. in County	Pct Dist. in State
	Total by place of work	\$1,814,800	\$44,885	7	40,432	100.0%	100.0%
	Wage and Salary	\$1,315,073	\$44,530	4	29,532	73.0%	77.8%
	Proprietors	\$165,574	\$15,190	6	10,900	27.0%	22.2%
	Farm	-\$158	-\$9,294	14	17	0.0%	0.2%
	Nonfarm	\$165,732	\$15,229	5	10,883	26.9%	22.1%
	Farm	\$313	\$7,634	15	41	0.1%	0.3%
	Nonfarm	\$1,814,487	\$44,923	8	40,391	99.9%	99.7%
	Private	\$1,056,724	\$35,733	11	29,573	73.1%	88.6%
	Forestry, fishing, etc. *	\$140	\$5,000	4	28	0.1%	0.1%
21	Mining	D	N/A	N/A	D	D	1.1%
22	Utilities	D	N/A	N/A	D	D	0.3%
23	Construction	D	N/A	N/A	D	D	6.5%
31-33	Manufacturing	\$155,525	\$60,492	5	2,571	6.4%	2.9%
42	Wholesale Trade	\$45,433	\$64,444	4	705	1.7%	2.6%
44-45	Retail Trade	\$124,297	\$31,444	2	3,953	9.8%	10.1%
48 49	Trans. and warehousing	D	N/A	N/A	D	D	3.5%
51	Information	\$20,431	\$47,294	4	432	1.1%	1.2%
52	Finance and insurance	\$58,710	\$14,547	9	4,036	10.0%	7.0%
53	Real Estate and rental and leasing	\$25,239	\$9,571	8	2,637	6.5%	6.3%
54	Professional, technical services	\$98,498	\$50,851	5	1,937	4.8%	5.3%
55	Management of companies, enterprises	\$9,772	\$27,605	6	354	0.9%	1.3%
56	Administrative and waste services	\$39,053	\$28,631	4	1,364	3.4%	6.0%
61	Educational services	\$4,152	\$21,853	4	190	0.5%	0.9%
62	Health care, social assistance	\$175,834	\$62,352	1	2,820	7.0%	6.9%
71	Arts, entertainment, and recreation	\$43,208	\$26,013	2	1,661	4.1%	3.2%
72	Accommodation and food services	\$48,293	\$20,181	7	2,393	5.9%	19.0%
81	Other services, exc. public admin.	\$66,196	\$36,035	3	1,837	4.5%	4.3%
NA	Gov. and gov. enterprises	\$757,763	\$70,046	4	10,818	26.8%	11.1%

Source: US Bureau of Economic Analysis(BEA)

D = Not shown to avoid disclosure of confidential information, but the estimates for this item are included in the totals.

L = Less than 10 jobs, but the estimates for this item are included in the totals.

N/A = Not available or not applicable.

* = "Other" consists of the number of jobs held by U.S. residents employed by international organizations and foreign embassies and consulates in the United States.

[Home](#) | [About STATS America](#) | [Contact Us](#) | [Report a Problem](#) |



STATS America is a service of the Indiana Business Research Center at Indiana University's Kelley School of Business: www.ibrc.indiana.edu. It was developed with support from the U.S. Department of Commerce, Economic Development Administration and Indiana University.

Updated: April 06, 2012 at 12:28



Market at a Glance

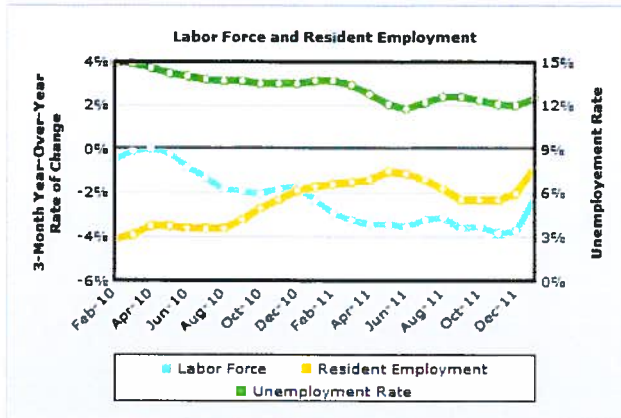


Carson City, NV

Prepared by: PD&R / Economic & Market Analysis Division (EMAD)
Pacific Regional Office

Created on: April 23, 2012

ECONOMIC CONDITIONS



Data Source: U.S. Bureau of Labor Statistics

Data Source: U.S. Bureau of Labor Statistics

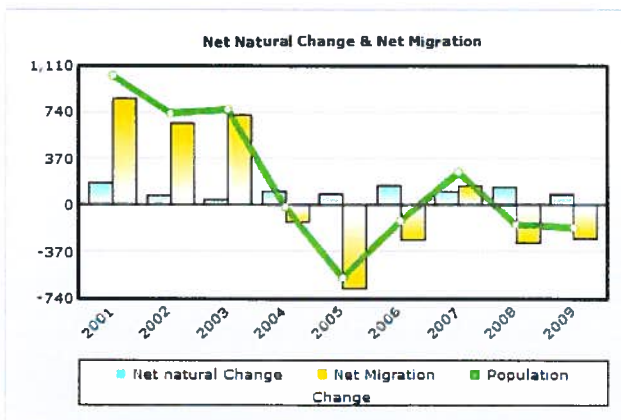
	3-Month Average			3-Month Year-Over-Year Change			
	January 2010	January 2011	January 2012	January 2010 to January 2011		January 2011 to January 2012	
	Number	Percent	Number	Number	Percent	Number	Percent
Labor Force	28,689	14.2	28,032	-657	-2.3	-612	-2.2
Resident Employment	24,612	14.2	24,184	-428	-1.7	-201	-0.8
Unemployment Rate (%)				n/a	n/a	n/a	n/a
	March 2009	March 2010	March 2011	March 2009 to March 2010		March 2010 to March 2011	
Covered Employment	28,738	27,245	27,063	-1,493	-5.2	-182	-0.7

Data Source: U.S. Bureau of Labor Statistics

POPULATION & HOUSEHOLDS

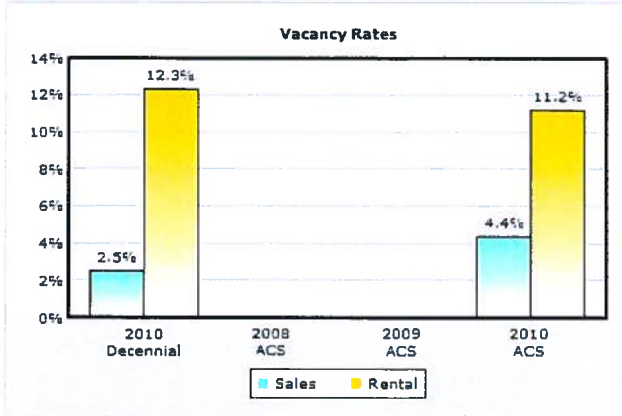
	Decennial Census				ACS & Population Estimates Program						
	April 2000	April 2010	Average Annual Change 2000 to 2010		July 2008	July 2009	July 2010	2008 to 2009		2009 to 2010	
			Number	Percent				Number	Percent	Number	Percent
Population	52,457	55,274	282	0.5	55,552	55,401	55,226	-151	-0.3	-175	-0.3
Households	20,171	21,427	126	0.6	21,282	20,930	20,986	-352	-1.7	56	0.3

Data Source: 1 - 2000 Census; 2010 Census; U.S. Census Bureau Population Estimates
2 - 2000 Census; 2010 Census; 2008, 2009 and 2010 American Community Surveys (3 - Year)

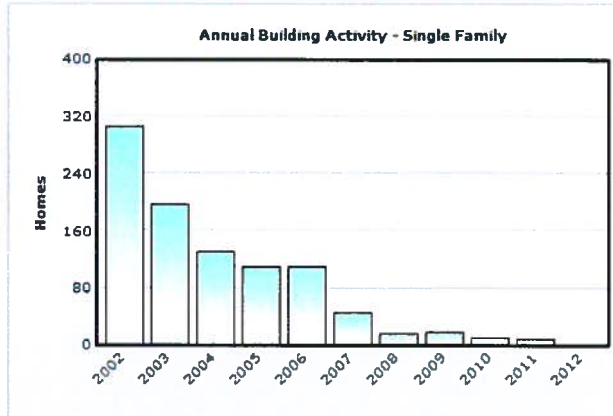


Data Source: U.S. Census Bureau Population Estimates

Notes: 1 - Values in chart reflect July year-to-year changes
2 - Net Migration includes residual population change



Data Source: 2010 Census; 2008, 2009 and 2010 American Community Surveys (3 - Year)

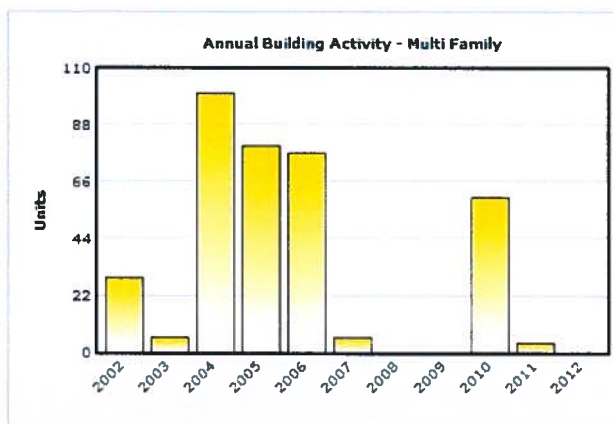


Data Source: U.S. Census Bureau, Building Permits Survey; adjustments by analyst

Note: Data for 2011 and 2012 is preliminary, through January 2012

Housing Inventory by Tenure				
	2010 Decennial	2008 ACS	2009 ACS	2010 ACS
Total Housing Units	23,534	22,860	22,974	23,521
Occupied	21,427	21,282	20,930	20,986
Owners	12,728	13,110	12,800	12,917
% Owners	59.4	61.6	61.2	61.6
Renters	8,699	8,172	8,130	8,069
% Renters	40.6	38.4	38.8	38.4
Total Vacant	2,107	1,578	2,044	2,535
Available for Sale	329	n/a	n/a	588
Available for Rent	1,216	n/a	n/a	1,019
Other Vacant	562	n/a	n/a	928

Data Source: 2010 Census; 2008, 2009 and 2010 American Community Surveys (3 - Year)



Data Source: U.S. Census Bureau, Building Permits Survey; adjustments by analyst

Note: Data for 2011 and 2012 is preliminary, through January 2012

Carson City, Nevada**US Census Quick Facts**
<http://quickfacts.census.gov>

People QuickFacts	Carson City	Nevada
Population, 2011 estimate	NA	2,723,322
Population, 2010	55,274	2,700,551
Population, percent change, 2000 to 2010	5.4%	35.1%
Population, 2000	52,457	1,998,257
Persons under 5 years, percent, 2010	5.8%	6.9%
Persons under 18 years, percent, 2010	21.4%	24.6%
Persons 65 years and over, percent, 2010	16.5%	12.0%
Female persons, percent, 2010	48.1%	49.5%
White persons, percent, 2010 (a)	81.1%	66.2%
Black persons, percent, 2010 (a)	1.9%	8.1%
American Indian and Alaska Native persons, percent, 2010 (a)	2.4%	1.2%
Asian persons, percent, 2010 (a)	2.1%	7.2%
Native Hawaiian and Other Pacific Islander, percent, 2010 (a)	0.2%	0.6%
Persons reporting two or more races, percent, 2010	2.9%	4.7%
Persons of Hispanic or Latino origin, percent, 2010 (b)	21.3%	26.5%
White persons not Hispanic, percent, 2010	70.7%	54.1%
Living in same house 1 year & over, 2006-2010	79.7%	78.2%
Foreign born persons, percent, 2006-2010	11.6%	19.3%
Language other than English spoken at home, pct age 5+, 2006-2010	17.7%	28.2%
High school graduates, percent of persons age 25+, 2006-2010	88.0%	84.3%
Bachelor's degree or higher, pct of persons age 25+, 2006-2010	21.6%	21.8%
Veterans, 2006-2010	6,609	234,081
Mean travel time to work (minutes), workers age 16+, 2006-2010	16.4	23.6
Housing units, 2010	23,534	1,173,814
Homeownership rate, 2006-2010	62.3%	60.1%
Housing units in multi-unit structures, percent, 2006-2010	25.1%	29.4%
Median value of owner-occupied housing units, 2006-2010	\$270,500	\$254,200
Households, 2006-2010	21,467	979,621
Persons per household, 2006-2010	2.53	2.65
Per capita money income in past 12 months (2010 dollars) 2006-2010	\$27,568	\$27,589
Median household income 2006-2010	\$52,067	\$55,726
Persons below poverty level, percent, 2006-2010	14.0%	11.9%

Business QuickFacts	Carson City	Nevada
Private nonfarm establishments, 2009	2,178	59,785 ¹
Private nonfarm employment, 2009	22,258	1,042,166 ¹
Private nonfarm employment, percent change 2000-2009	-10.2%	15.4% ¹
Nonemployer establishments, 2009	5,198	166,864
Total number of firms, 2007	8,470	221,260
Black-owned firms, percent, 2007	0.6%	3.9%
American Indian- and Alaska Native-owned firms, percent, 2007	0.6%	0.8%
Asian-owned firms, percent, 2007	3.1%	7.9%
Native Hawaiian and Other Pacific Islander-owned firms, percent, 2007	F	0.3%
Hispanic-owned firms, percent, 2007	5.2%	8.1%
Women-owned firms, percent, 2007	20.0%	28.6%
Manufacturers shipments, 2007 (\$1000)	621,630	15,735,787
Merchant wholesaler sales, 2007 (\$1000)	D	19,255,893
Retail sales, 2007 (\$1000)	991,506	37,433,983
Retail sales per capita, 2007	\$18,025	\$14,579
Accommodation and food services sales, 2007 (\$1000)	127,696	28,815,533
Building permits, 2010	71	6,443
Federal spending, 2009	1,469,771	19,893,713 ¹
Geography QuickFacts	Carson City	Nevada
Land area in square miles, 2010	144.66	109,781.18
Persons per square mile, 2010	382.1	24.6
FIPS Code	510	32
Metropolitan or Micropolitan Statistical Area	Carson City, NV Metro Area	

1: Includes data not distributed by county.

Population estimates for counties will be available in April, 2012 and for cities in June, 2012.

(a) Includes persons reporting only one race.

(b) Hispanics may be of any race, so also are included in applicable race categories.

D: Suppressed to avoid disclosure of confidential information

F: Fewer than 100 firms

FN: Footnote on this item for this area in place of data

NA: Not available

S: Suppressed; does not meet publication standards

X: Not applicable

Z: Value greater than zero but less than half unit of measure shown

Source U.S. Census Bureau: State and County QuickFacts. Data derived from Population Estimates, American Community Survey, Census of Population and Housing, State and County Housing Unit Estimates, County Business Patterns, Nonemployer Statistics, Economic Census, Survey of Business Owners, Building Permits, Consolidated Federal Funds Report
Last Revised: Tuesday, 31-Jan-2012 16:54:33 EST

	Carson City	Error Margin	National Benchmark*	Nevada	Rank (of 16)
Health Outcomes					12
Mortality					7
Premature death	8,129	7,321-8,937	5,466	7,927	
Morbidity					12
Poor or fair health	20%	17-23%	10%	18%	
Poor physical health days	4.2	3.6-4.7	2.6	3.7	
Poor mental health days	3.5	3.0-4.0	2.3	3.7	
Low birthweight	7.6%	6.9-8.4%	6.0%	8.1%	
Health Factors					9
Health Behaviors					4
Adult smoking	23%	20-26%	14%	22%	
Adult obesity	23%	20-26%	25%	26%	
Physical inactivity	21%	18-24%	21%	24%	
Excessive drinking	19%	17-22%	8%	19%	
Motor vehicle crash death rate	17	12-21	12	17	
Sexually transmitted infections	270		84	386	
Teen birth rate	60	56-65	22	53	
Clinical Care					4
Uninsured	25%	23-27%	11%	25%	
Primary care physicians	837:1		631:1	1,153:1	
Preventable hospital stays	56	51-61	49	59	
Diabetic screening	80%	73-86%	89%	76%	
Mammography screening	61%	55-67%	74%	60%	
Social & Economic Factors					11
High school graduation	98%			70%	
Some college	48%	43-53%	68%	54%	
Unemployment	14.1%		5.4%	14.9%	
Children in poverty	22%	16-27%	13%	21%	
Inadequate social support	24%	20-28%	14%	23%	
Children in single-parent households	41%	34-47%	20%	34%	
Violent crime rate	375		73	728	
Physical Environment					5
Air pollution-particulate matter days	0		0	1	
Air pollution-ozone days	0		0	24	
Access to recreational facilities	14		16	7	
Limited access to healthy foods	3%		0%	4%	
Fast food restaurants	49%		25%	56%	

* 90th percentile, i.e., only 10% are better

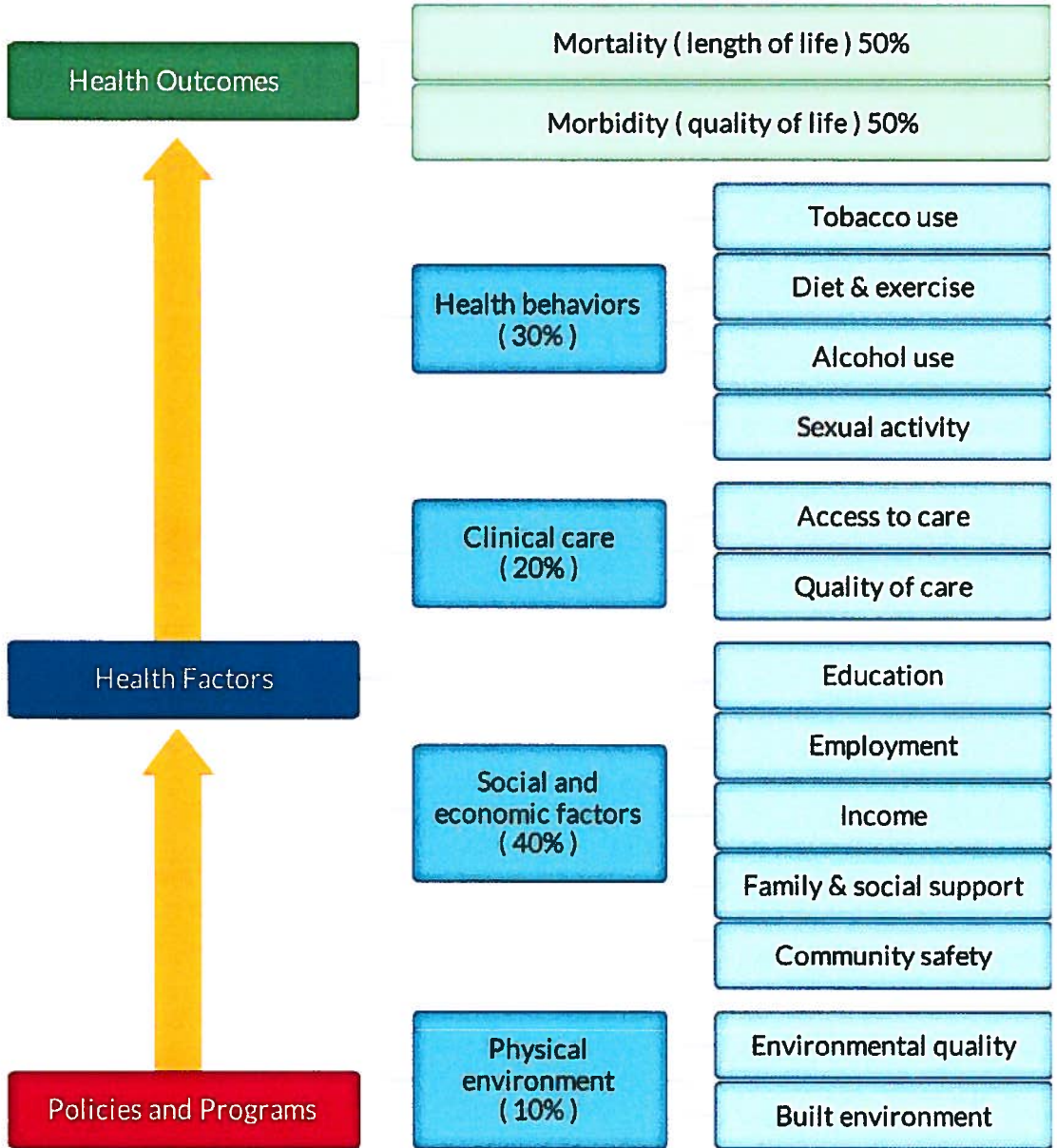
2012

Note: Blank values reflect unreliable or missing data

County Health Rankings

The 2012 *County Health Rankings* report ranks Nevada counties according to their summary measures of **health outcomes** and **health factors**. Counties also receive a rank for mortality, morbidity, health behaviors, clinical care, social and economic factors, and the physical environment. The figure below depicts the structure of the *Rankings* model; those having high ranks (e.g., 1 or 2) are estimated to be the “healthiest.”

Our summary **health outcomes** rankings are based on an equal weighting of mortality and morbidity measures. The summary **health factors** rankings are based on weighted scores of four types of factors: behavioral, clinical, social and economic, and environmental. The weights for the factors (shown in parentheses in the figure) are based upon a review of the literature and expert input, but represent just one way of combining these factors.

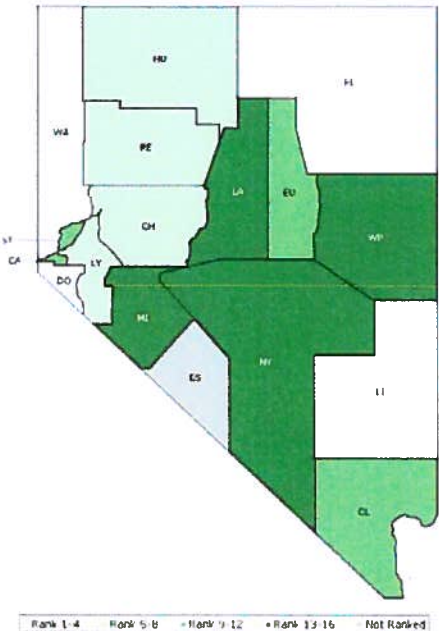


County Health Rankings model ©2012 UWPHI

The maps on this page and the next display Nevada’s counties divided into groups by health rank. Maps help locate the healthiest and least healthy counties in the state. The lighter colors indicate better

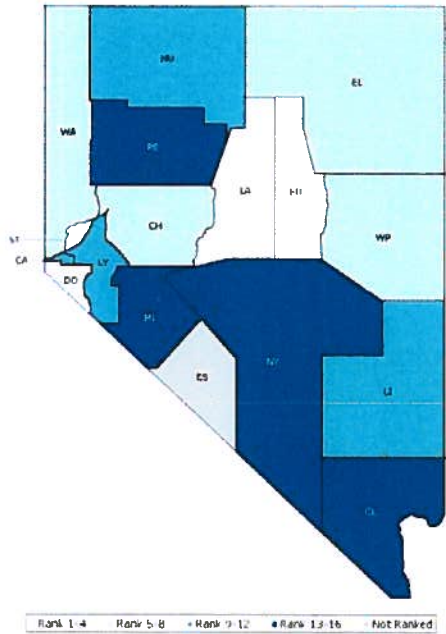
performance in the respective summary rankings. The green map shows the distribution of summary health outcomes. The blue displays the distribution of the summary rank for health factors.

HEALTH OUTCOMES



County	Rank	County	Rank	County	Rank	County	Rank
Carson City	12	Esmeralda	NR	Lyon	5	Washoe	4
Churchill	7	Eureka	11	Mineral	16	White Pine	13
Clark	10	Humboldt	8	Nye	15		
Douglas	1	Lander	14	Pershing	6		
Elko	2	Lincoln	3	Storey	9		

HEALTH FACTORS



County	Rank	County	Rank	County	Rank	County	Rank
Carson City	9	Esmeralda	NR	Lyon	12	Washoe	5
Churchill	8	Eureka	3	Mineral	16	White Pine	6
Clark	13	Humboldt	11	Nye	15		
Douglas	1	Lander	2	Pershing	14		
Elko	7	Lincoln	10	Storey	4		

Summary Health Outcomes & Health Factors Rankings

Counties receive two summary ranks:

- Health Outcomes
- Health Factors

Health outcomes represent how healthy a county is while health factors represent what influences the health of the county.

Each of these ranks represents a weighted summary of a number of measures.

Rank	Health Outcomes	Rank	Health Factors
1	Douglas	1	Douglas
2	Elko	2	Lander
3	Lincoln	3	Eureka
4	Washoe	4	Storey
5	Lyon	5	Washoe
6	Pershing	6	White Pine
7	Churchill	7	Elko
8	Humboldt	8	Churchill
9	Storey	9	Carson City
10	Clark	10	Lincoln
11	Eureka	11	Humboldt
12	Carson City	12	Lyon
13	White Pine	13	Clark
14	Lander	14	Pershing
15	Nye	15	Nye
16	Mineral	16	Mineral

Not Ranked: Esmeralda

2012 County Health Rankings: Measures, Data Sources, and Years of Data

	Measure	Data Source	Years of Data
HEALTH OUTCOMES			
Mortality	Premature death	National Center for Health Statistics	2006-2008
Morbidity	Poor or fair health	Behavioral Risk Factor Surveillance System	2004-2010
	Poor physical health days	Behavioral Risk Factor Surveillance System	2004-2010
	Poor mental health days	Behavioral Risk Factor Surveillance System	2004-2010
	Low birthweight	National Center for Health Statistics	2002-2008
HEALTH FACTORS			
HEALTH BEHAVIORS			
Tobacco Use	Adult smoking	Behavioral Risk Factor Surveillance System	2004-2010
Diet and Exercise	Adult obesity	National Center for Chronic Disease Prevention and Health Promotion	2009
	Physical inactivity	National Center for Chronic Disease Prevention and Health Promotion	2009
Alcohol Use	Excessive drinking	Behavioral Risk Factor Surveillance System	2004-2010
	Motor vehicle crash death rate	National Center for Health Statistics	2002-2008
Sexual Activity	Sexually transmitted infections	National Center for Hepatitis, HIV, STD and TB Prevention	2009
	Teen birth rate	National Center for Health Statistics	2002-2008
CLINICAL CARE			
Access to Care	Uninsured	Small Area Health Insurance Estimates	2009
	Primary care physicians	Health Resources & Services Administration	2009
Quality of Care	Preventable hospital stays	Medicare/Dartmouth Institute	2009
	Diabetic screening	Medicare/Dartmouth Institute	2009
	Mammography screening	Medicare/Dartmouth Institute	2009
SOCIAL AND ECONOMIC FACTORS			
Education	High school graduation	National Center for Education Statistics and state-specific sources ¹	2008-2010
	Some college	American Community Survey	2006-2010
Employment	Unemployment	Bureau of Labor Statistics	2010
Income	Children in poverty	Small Area Income and Poverty Estimates	2010
Family and Social Support	Inadequate social support	Behavioral Risk Factor Surveillance System	2006-2010
	Children in single-parent households	American Community Survey	2006-2010
Community Safety	Violent crime rate ²	Federal Bureau of Investigation	2007-2009
PHYSICAL ENVIRONMENT			
Environmental Quality ³	Air pollution-particulate matter days	U.S. Environmental Protection Agency	2007
	Air pollution-ozone days	U.S. Environmental Protection Agency	2007
Built Environment	Access to recreational facilities	Census County Business Patterns	2009
	Limited access to healthy foods ⁴	U.S. Department of Agriculture	2006
	Fast food restaurants	Census County Business Patterns	2009

¹ NCES used for AK, AL, AR, CA, CT, FL, HI, ID, KY, MT, ND, NJ, OK, SD and TN

² State data source for IL.

³ Not available for AK and HI.

⁴ Access to Healthy Foods (2009) from Census Zip Code Business Patterns for AK and HI.