

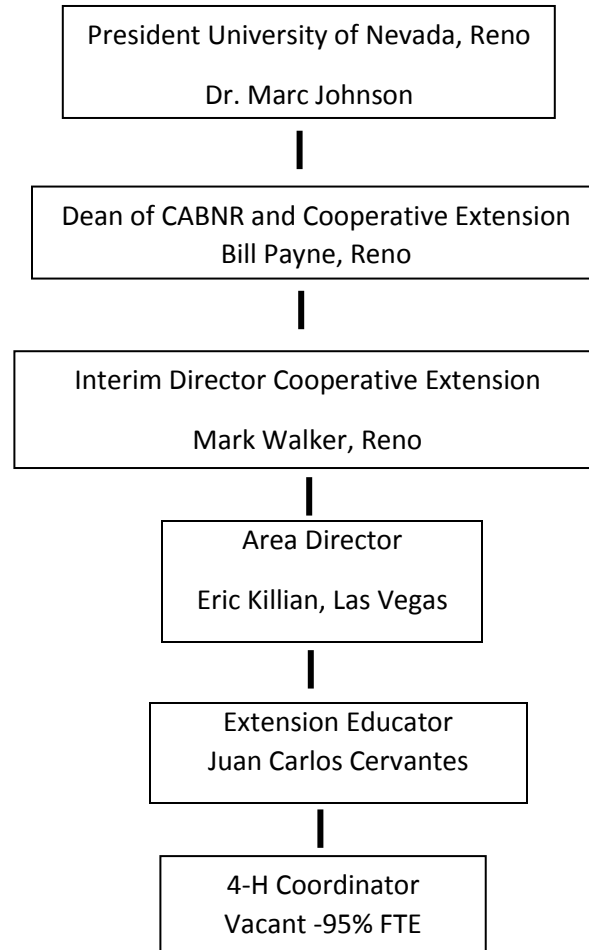
Cooperative Extension Accomplishment Report 2016



University of Nevada
Cooperative Extension

White Pine County
950 Campton St., Ely, NV 89301 Phone
775-293-6598
Email: cervantesj@unce.unr.edu
www.unce.unr.edu/counties/whitepine

Organizational Chart



The University of Nevada Cooperative Extension was established in Nevada in 1914 as an educational partnership between the



**COOPERATIVE EXTENSION'S MISSION IS TO
DISCOVER, DEVELOP, DISSEMINATE,
PRESERVE AND USE KNOWLEDGE TO
STRENGTHEN THE SOCIAL, ECONOMIC AND
ENVIRONMENTAL WELL-BEING OF PEOPLE.**

federal government, county governments and the land-grant university. Cooperative Extension conducts "educational, research, outreach and service programs pertaining to agriculture, community development, health and nutrition, horticulture, personal and family development and natural resources in both rural and urban communities of Nevada."

2016 Programs:

The White Pine County Extension website, www.unce.unr.edu/counties/whitepine is live and ready to distribute news of all of our 2017 programs through posts.

Cooperative Extension Accomplishment Report 2016

1) Assessment and documenting local program needs

Data for the needs-assessment was gathered from two previous needs assessments completed in 2010 and 2013 for White Pine County and from documents of work currently being done by organizations operating within White Pine County. Data was gathered and coded from various county service organizations. I used a two-step process; i.e., first, an in depth exploration of work currently underway by organizations within the county, and second soliciting knowledge via semi-structured interviews of information-rich individuals from within the community. This method better captures the reactions to ideas and concepts presented during the face to face interviews and highlights possible barriers to changing behaviors. These data are invaluable for identifying the most relevant programming and are more easily culled from face to face interviews.

2) Coordinating educational activities that have immediate applicability

As a consequence of my outreach and face to face interviews with the local leadership, it became apparent that some needs cannot wait for the official completion and publication of the needs assessment before developing and implementing effective programming.

I designed, proposed, and began implementation of a Customer Service Standards Skills Training Program. I met with the White Pine Chamber of Commerce, presented my ideas and we launched a Customer Service Skills Training Program for the hospitality workers within the county. I am drafting a customer-service standards document which will be put into a brochure format and will be adopted by the Chamber of Commerce as a standard for its business members; additionally, I am in cooperation with the Chamber of Commerce to also develop and implement a parallel training program for small business owners aimed at instructing small business owners on ways to improve their Personal Business Image.

Extension sponsored an event, in cooperation with the local gold mine, to introduce kids to STEM subjects and to simultaneously use the event as a recruitment tool for a drone 4-H club; the local gold mine liked the idea so much they brought their work-drone as well as the drone pilot to the event. After the youth learned about flight principles, basic coding, and a hands on activity where each participant made a foam glider and competed against one another to determine whose glider traveled the farthest, participants were treated to a drone flight demonstration.

3) Effectively communicating the role of extension

I have spent much time explaining to the community at large that extension is more than 4-H. Much of this activity has focused on presenting extension as an asset to the community to forge cooperation in all areas of community need for the benefit of improving rural lives.

I speak to large groups and subsequently hold question and answer sessions. I have repeatedly been complemented for my outreach efforts because few people appear to understand what extension does in rural communities and no previous extension educator in White Pine has reached out the entire community.

4) Development of professional relationships with faculty and local leadership

My effectiveness as an extension educator is only as good as my professional network. My efforts to foster relationships with other faculty and the local leadership have led to teaching opportunities.

I worked as a youth instructor at the Nevada Youth Range Camp where I spent a primitive camping experience with a youth group identifying plants, teaching about soil properties, and instructing youth participants to identify different

The White Pine County Extension website, www.unce.unr.edu/counties/whitepine is live and ready to distribute news of all of our 2017 programs through posts.

Cooperative Extension Accomplishment Report 2016

phases of stream conditions, all with the end goal of teaching participants that management regimes have a real and visible impact on the landscape. From these professional relationships, I have had the opportunity to partake in grant proposals and identify future natural resource programming for youth. Additionally, I have forged strong relationships with county commissioners and many of the volunteer leadership which has opened opportunities to engage in local activities.

5) Development of or first-time application of new techniques

My method used to identify community needs has strengthened the role of extension. I developed a series of questions designed to stimulate discussion rather than solicit specific answers to questions; this method has produced invaluable data and excitement about the possibilities that extension offers to improving people' lives. I have had face to face discussions with professionals and leaders from natural resource management agencies, I have had face to face discussion with agricultural producers, and face to face discussions with educators and other professionals whose work is youth development. Additionally, in response to a continuous demand for practical advice on gardening and other landscaping issues, I have published articles in the local paper with the intent to reach as broad an audience as possible.

6) Research, Creative Activity, Papers, Publications, Grant Activity:

My research included a presentation to a group of scientists on the merit of integrated ecology research for the proposed Spring Valley Ecological Research Station; I published two articles of general interest in the local paper; I am PI on a grant request for a 3-D printer to be used in an after school STEM program targeted to middle school age youth; I am a co PI on three grants: one on the development of new grazing response indexes, another on Roles of pre-fire vegetation, soil, climate, and rehabilitation in Great Basin ecosystem recovery to develop, coordinate, and deliver science education programs for local citizens on ecology, and lastly I am part of the grant team for a Risk Management Agency grant on Targeted States Crop and livestock Education Program.

At the behest of the county commissioners, I have been engaged since November in the effort to update White Pine County's Water Management Plan by researching data, compiling data, planning, and editing; finally, since October I have been doing the research for a collaborative effort with the City of Ely's Mayor and Tourism Committee to uncover tourist potential of the city and county given its natural assets and the tourism market for those assets.

Juan Carlos Cervantes
University of Nevada Cooperative Extension
White Pine County Extension Educator

The White Pine County Extension website, [www. unce.unr.edu/counties/whitepine](http://www.unce.unr.edu/counties/whitepine) is live and ready to distribute news of all of our 2017 programs through posts.