



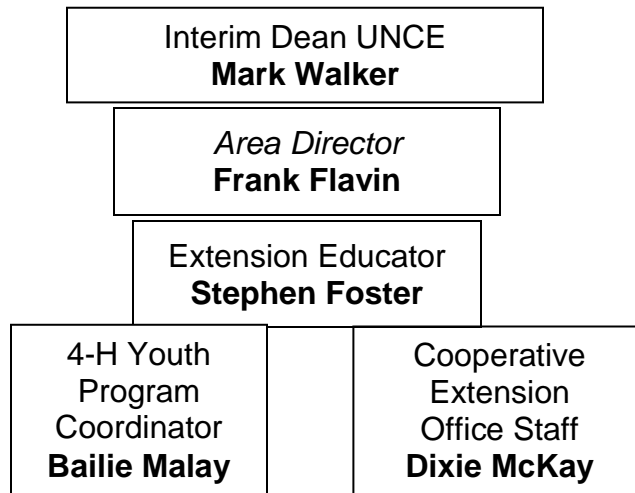
University of Nevada
Cooperative Extension

Pershing County

PO Box 239
810 Sixth St.
Lovelock, NV 89419
Phone (775) 273-2923
Fax (775) 273-7647
www.unce.unr.edu

2016 Accomplishment Report

Organizational Chart



Mission

To discover, develop, disseminate, preserve and use knowledge to strengthen the social, economic and environmental well-being of people.

Programs

Nevada Cooperative Extension is an outreach college of the University of Nevada that provides information to solve problems and deal with critical issues within local communities. With local needs at the forefront, we develop educational programs in a number of ways - public presentations, workshops, demonstrations, publications and through the media. In recent years, we've begun to use Internet, interactive video and satellite broadcast technologies, bringing knowledge directly to your home and community. With the help of volunteers we deliver educational programs in these areas: Agriculture, Children-Youth and Families, Community Development, Health and Nutrition, Horticulture and Natural Resources.

2016 Highlights of Pershing County

Stephen Foster serves as the local UNR contact and primary link between UNCE programming and the citizens in Pershing County. The allocated time in his role statement is 70% teaching, 25% research and scholarly activity and 5% service. Stephen's 2016 education and research programs emphasized Agronomic Crop Production (to increase profitability and efficiency for producers), Weed, Insect and Disease Management, Farm Management (Herds and Harvest Program) and Rangeland Management (youth education, alternative grazing methods and drought management).

The commitment behind this educator's extension efforts is to gather the best, relevant, science-based information and disseminate it effectively to those who will benefit.

• **Information is gathered by:**

- Networking with professionals including an involvement in agronomic professional organizations
- Development of and collaboration on field research projects to answer questions regarding options to increase crop profitability and productivity
- Continuing development of knowledge and skills in crop production, soil management, plant nutrition, plant pathology, entomology, farm management, and in conducting field research
- Listening to producers

• **Information is disseminated by:**

- Planning, teaching, and evaluating educational programs - for the producers and program participants
- News articles and interviews in traditional media

Program implementation occurred at the county, multi-county, state and regional levels, and involved collaboration with on and off-campus faculty, government agencies, non-government organizations, and area residents.

Overview

In 2016, Stephen delivered over 25 educational presentations at 12 individual events. These presentations included local programs, regional programs and statewide programs, such as; 2016 Cattlemen's Update, Pesticide Safety Training, Corn and Soybean Production Workshop, Youth Range Camp and Slaughter Certification Basic II Workshop. He also, coordinated, promoted and moderated 18 individual webinar seminars for local producers on the following topics; *Facts About Gypsum*, *Promising Potential of Pulse Crops*, *So, Why Do You Want to Grow Cover Crops?*, *Bee Health and Stewardship*, *State-wide Pesticide Applicator Training* and *"Grow Your Own" horticulture Programs*. He conducted one grazing demonstration project, *Effects of Targeted Cattle Grazing on Fire Behavior of Cheatgrass-Dominated Rangeland in Pershing County, Nevada*. He assisted in conducting the first *Business Retention and Expansion Program (BR&E)* in collaboration with the Pershing County Economic Diversification Authority (PECDA). Through the Beginning Farm/Rancher program, He attended hands on training in utilizing ultrasound for pregnancy checking cattle, and carcass traits evaluation of live cattle for implementation of programs for 2017.

Scholarly products integrated into Stephen's education programs included; UNCE peer reviewed publications include first author on *Soil Properties, Part 3 of 3: Chemical Characteristics*, UNCE Factsheet 16-2, and *Developing a Drought Management Plan*, CL920, Cattle Producer's Library, Western Beef Resource

Committee. Also, Special Publication *Nevada Youth Range Camp Plant Identification Guide* and was submitted in 2015 and is still under review. His presentation, *Alternative Methods for Pregnancy Checking Cattle*, was published in the 2016 Nevada Cattlemen's Update proceedings. Co-author on one national presentation with abstract, *Nevada (USA) Range Management School – Adapting an American, Grazing Management Curriculum to other Continents* and one international presentation, *Nevada's Range Management School – An Example for Translating the Science of Rangeland and Grazing Management to Pastoralists*.

Forty-seven educational news articles were published in the local weekly newspapers which were distributed throughout Pershing, Humboldt and Lander counties (circulation ~8,500). Three articles were published in a statewide trade journal, Nevada Rancher Magazine (circulation ~2,000) and 4 articles were published in the Sage Signal, Nevada Cattlemen's Magazine.

In support of his Extension programs, Stephen was the principle investigator on a WSARE Professional Development Program Grant, \$22,950, and he was co-investigator on a \$50,700 BLM grant for the *Riparian Service Team*, the *Beginning Farmer and Rancher USDA Grant (2014-2017)*, \$692,433, and Sustainable Agriculture Research Producer/Professional Grant, \$68,542 (submitted).

For service, Stephen assumed the duties as State Coordinator for the Western Sustainable Research and Education organization. He reviewed four UNCE publications and served on local, state and regional committees (Chairman, Northern Area Promotion and Tenure Committee). He is also, the web site manager for the Nevada Society for Range Management and State President for the National Association of County Extension Agents. He is a member of three professional organizations, and maintain one professional certification (*Certified Crop Advisor*).

Stephen also, manages and direct the Pershing County Extension Office and its programs. Primary responsibilities include preparation, defense and management of an annual budget of \$83,100; serving as the liaison between the University and the County Commissioners; supervision and evaluation of one full-time and one half-time support staff; and administrative oversight of the 4-H youth development program.

In addition, Stephen is responsible for addressing local agricultural and horticultural inquires, both in person and through his weekly news articles. Office efficiency remains high with the help of Youth Development Program Coordinator, Bailie Malay and Office Administrative Assistant Dixie McKay.

Teaching (Summary of teaching, supervision and advisement duties)

Overview:

Programming integrated content, expertise and teaching methodology to develop a comprehensive approach to effective educational programming through a variety of methods including; e-mail groups, web sites, Facebook groups, fact sheets, mailed

information, workshops, newspapers, on-site visits, telephone, one-on-one, and group discussions.

Agricultural Programs

The Program Needs Assessment for Pershing County, (Foster, 2010) identified two important agricultural issues; 1) How to improve the profitability and efficiency of their agricultural operations; 2) How to manage weeds safely and economically.

Improving Farmer/Rancher Profitability and Efficiency Programs

Situation: Nevada's Agriculture Industry Sector is a major contributor to the State's economy, with a total economic impact estimated at \$5.3 billion, including direct, indirect, and induced impacts (Nevada Agriculture Analysis and Opportunities Report, 2013).

Pershing County is currently experiencing prolonged drought conditions. For the second year in a row, farmers and ranchers were allocated zero irrigation water for their crops and/or pastures.

Corn/Soybean Production in Nevada

Situation: Alfalfa hay, alfalfa seed and small grains are the principle crops produced in Pershing County. Alfalfa hay remains by far the most important crop in terms of both acres harvested and value of production. Despite an 80% reduction in alfalfa seed acreage over the last eight years, it remained in second place followed by "other hay" production. Small grains are grown as a rotational crop between the establishments of alfalfa crops. As a means to increase the profitability of local farmers, and provide an alternative crop option to the local producers, an educational program on growing corn/soybeans as a high income rotational crops was developed.

Inputs/Outputs: A comprehensive educational program was developed to provide information and assistance in growing corn/soybeans in the local area. An informal curriculum was developed, presented and evaluated for this program. The objective of this program was to educate producers on the recommended best management practice for growing corn/soybeans in Northern Nevada.

Stephen developed and presented an all-day program on the following topics; Introduction to Corn and Soybean Production, Soils/fertility for Corn and Soybean Production, Corn and Soybean Physiology and Growth Stages, Variety/Maturity Group Selection, Corn and Soybean Production Best Management Practices, Corn and Soybean Enterprise Budgets and Economics, Corn and Soybean Diseases/Insect Control, Corn and Soybean Weed Management and Relay Intercropping Systems with Wheat.

Outcomes/Impacts: Farmers who attended the Corn/Soybean production program were asked; "Did you gain any knowledge from this soybean production training? (1= no new knowledge - 5= significant knowledge). The average of all topics presented was equal to 4.79 (n=18). One-hundred percent of the participants indicated that they would consider growing corn or soybeans on their farming operations from the

information provided during this training. When asked how much profit could be realized per acre from attending this program (participants represented a total of 10,800 acres) their responses ranged from \$1.00 - \$10.00 per acre. These responses corresponded to a possible increase in profitability of \$54,000 to \$92,000, realized by all participants.

Over 4,500 acres of corn were planted this year in Pershing County. This far exceeds the number of corn acres ever planted in this area. Two producers entered the National Corn Growers Contest and I supervised the harvesting of the varieties entered in the contest. One plot yielded 232 bushels per acre, and the top yielding entry yielded 260 bushel per acre.

Publications developed for this program:

Stephen authored one UNCE peer reviewed publication, Foster, S., S. Urbanowitz, H. Gatzke, B. Schultz, *Soil Properties, Part 3 of 3. Chemical Characteristics*, FS-16-02 and two news articles related to corn and soybean production published in regional and statewide media.

Cattlemen's Update 2016

Situation: Cattlemen's Update is a decades-old annual educational program offered by the University of Nevada Cooperative Extension and the University of Nevada Reno for beef cattle producers. Program topics speak to current beef cattle production management issues in the Great Basin region affecting profitability and product quality. Subject matter selection is based on a needs assessment of Nevada beef cattle producers and on concerns and trends expressed by the leaders of the beef cattle industry in the United States.)

Inputs/Outputs: Stephen's involvement in the 2016 Cattlemen's Update consisted of developing and presenting a PowerPoint presentation, "*Options in Pregnancy Testing Your Cows*," at six locations across the state. This presentation provided ranchers with information on alternatives for pregnancy checking cattle. These included: rectal palpation, ultrasound and blood testing.

Impacts/Outcomes: Participants were asked, "*As a result of the Cattlemen's Update program, I understand Options in Pregnancy Testing Cows*," 82 percent of the participants replied that they agreed or strongly agreed with this statement. Publications developed: Stephen authored 7 articles related to livestock production that were published in regional and statewide media. The presentation, "*Options in Pregnancy Testing Your Cows*," presentation and additional breeding management factsheets were published in the "2016 Cattlemen's Update" proceedings.

Agricultural Webinars

Situation: Due to the lack of resources and specialist available to County Educators, Stephen searched for other opportunities to provide educational programs for local clientele. These include webinar seminars available through the American Society of Agronomy and other Land Grant Universities.

Input/Outputs: In 2016, the Pershing County Cooperative Extension office offered 18 different webinars/interactive video programs. They included: *Facts About*

Gypsum, Promising Potential of Pulse Crops, So, Why Do You Want to Grow Cover Crops?, Bee Health and Stewardship, State-wide Pesticide Applicator Training and "Grow Your Own" horticulture Programs.

Impacts/Outcomes: Participants of these educational programs repeatedly remarked that they appreciated receiving current and relevant information without having to travel long distances. One attendee commented, "The *Promising Potential of Pulse Crops* Seminar provided a much need alternative crop option for his farming operation."

Managing Weeds Safely and Economically Pesticide Applicator Training

Situation: Pershing County farmers/ranchers identified a significant need for more knowledge about how to safely and economically manage pests. Therefore, Stephen developed a comprehensive pest management program that addressed local and state-wide audiences. His program consists of two primary components: 1) Pest management presentations in a class-room setting; and 2) Effects of targeted cattle grazing on fire behavior of cheatgrass-dominated rangeland in Pershing County, Nevada.

Inputs/Outputs: This year, in collaboration with the Nevada Department of Agriculture he organized, hosted and presented numerous pest management programs. For Pershing County pesticide applicators, he developed and presented a four hour pesticide CEU training session, in collaboration with other UNCE educators and specialist. Participants were presented with fact sheets and other informational handouts.

Outcomes/Impacts: Programming for 2016, offered a total of 12.0 hours of state approved continuing educational credits for producers with pesticide applicators licenses. If this program had not been available to local residents they would have had to travel long distances, at significant personal expense, to obtain the necessary continuing education units CEUs to maintain their "Certified Applicator" status. Undoubtedly there would have been a decline in certified applicators, which is an undesired outcome given the complexity of safely applying pesticides in agricultural settings.

Students who completed evaluations of the 2016 Pershing County pest management program evaluations were asked the following:

- Did you gain any knowledge or learn anything new from this training? (1=No Knowledge Gain, 5=Significant Knowledge Gain). Mean = 4.17 over 4 topic areas, (n=13).
- Do you think this program helped improve the profitability or efficiency on your operation? 92.3% indicated yes. (n=13).
- When asked how much profit per acre could be realized from attending this program, their responses ranged from \$1.00 - \$10.00 per acre (participants represented a total of 9,527 acres). These responses equated to a possible increase in profitability of \$50,527 to \$88,635 per acre for all participants (2016).

Publications developed: Stephen authored six educational news articles related to pest management issues that were published in local and regional media and UNCE Special Publication, *Russian Knapweed Control Study, 2013-2015*, UNCE Special Publication 16-04.

Effects of targeted cattle grazing on fire behavior of Cheatgrass-dominated rangeland in Pershing County, Nevada

Situation: This demonstration proposed to use a grazing allotment located near Rye Patch, Nevada. Located within this allotment are many roads, which create potential fire-breaks that could be enhanced with reduction of cheatgrass infestation and the establishment of native perennials and other fire adapted plants. To reduce cheatgrass along this corridor, we proposed to implement targeted grazing; using the current AUM's assigned to this allotment and aided by the use of mineral supplement. If this approach proves successful, we would propose increasing AUMs to further reduce the cheatgrass monoculture and enhance fire adapted plants in the future.

Inputs/Outputs: In order to improve our understanding of the effect of fall grazing as a fuel reduction tool and fall grazing effects on perennial plant communities, we proposed to conduct a demonstration with the following objectives: 1) Reduce the fuel load on the Rye Patch Allotment; 2) Monitor Plant community changes using photographs and the Canopeo Application. Forage production monitoring was conducted in the designated area during the winter grazing period of 2015-2016.

Utilization and plant community monitoring was conducted to determine changes in weed cover and density and cheatgrass biomass pre-grazing and post-grazing.

Outcomes/Impacts: This is a multi-year demonstration in which the continued monitoring of the plant populations will be compared on a span of 3-5 years. This demonstration will be continued next year.

Publications developed: Stephen authored 3 educational news articles related to Rangeland Management and one regional trade journal article.

Farm Management Programs

Beginning Farmers/Ranchers Development Program (Herds & Harvest)

Situation: There is renewed interest in beginning farmer and rancher programs at multiple levels of government because: 1) the increasing average age of U.S. farmers; 2) the 8% projected decrease in the number of farmers and ranchers between 2008 and 2018; and 3) the growing recognition that new programs are needed to address the specific needs of the next generation of beginning farmers and ranchers, many of whom come from non-agricultural backgrounds.

Inputs/Outputs: Stephen is a team member and co-investigator for a \$692,433 "Beginning Farmer and Rancher Development Program" grant submitted to the National Institute of Food and Agriculture. This year with the assistance of Mike Holcomb, Wolf Pack Meats, he taught a portion of the Herds & Harvest Basics II

Slaughter and Processing Certification Program. Instruction was given on; how meat packers make their money, overview of the grade and yield system and live/ultrasound evaluation of cattle.

Outcomes/Impacts: Retrospective surveys administered immediately following the Basic II Slaughter Certification Workshops reported that 100% of participants agreed or strongly agreed that they learned how to improve their meat quality and 100% learned how to add value to what they produce. One-hundred percent of participants (n=5) also reported that they learned how to increase their farm/ranch income.

Publications developed: Stephen developed a PowerPoint presentation and guide book for this program. In addition, he authored 20 educational news articles related to farm production and management issues that were published in regional and statewide media.

Natural Resources Programs

Nevada Youth Range Camp

Situation: The bulk of Nevada's youth live in large urban environments, with little exposure to rangelands, forests, or agricultural environments, and the products and services rangelands provide the American public. Limited exposure to these environments suggests that Nevada's youth are increasingly less predisposed to seek education, vocations, or project experiences in the natural resources, particularly on the large isolated rangelands typical of the western United States. Furthermore, there is a shrinking percentage of the population with knowledge about rangeland resource issues; yet national law, regulation and policy seek public input toward the management of rangeland resources. The Nevada Youth Range Camp provides high school students with a foundation in the physical and biological sciences that inform us about natural resources and what guides their management

Inputs/Outputs: Stephen has been an instructor at the weeklong Range Camp since 2009, and he provides leadership and education for student attendees. This year he developed and piloted a *Plant Identification Guide and Curriculum* for the students. Each year Stephen teaches the *Stream Investigation Class*, which educates students about the role of riparian vegetation toward maintaining stream bank stability and proper riparian function, which facilitates high water quality and healthy aquatic habitat.

Outcomes/Impacts: Knowledge gains are documented annually when the students complete an open-ended written evaluation. Results of the Nevada Youth Range Camp evaluation indicated that students gained the most knowledge in the Stream Investigation/Proper Function and Condition of Riparian Areas class with a 34.7% increase between the pre-test and post-test results. An increase in knowledge was documented in all of the educational areas taught.

Publications developed: Stephen was first author on UNCE Special Publication, *Nevada Youth Range Camp Plant Identification Guide*, was submitted in 2015 (still under review).

Economic Development Programs

Business Retention and Expansion (BR&E) Program

Situation: Stephen is a board member of the Pershing County Economic Diversification Authority (PECDA). The Mission of the PCEDA is to help maintain and grow a vibrant economic base by developing and implementing programs that invigorate growth thereby increasing the number of local jobs and expanding the tax base of Pershing County. PCEDA serves as a liaison between new companies, existing companies, landowners, site selectors, utility companies, government entities and all Pershing County communities. In order to better serve the existing businesses in Pershing County the PECDA agreed to follow the guidelines of the University of Minnesota Cooperative Extension's *Business Retention and Expansion Program (BR&E)*. Research shows that up to 86 percent of new jobs are created by existing businesses in a community, rather than businesses attracted to a community. Keeping an existing business in the community is usually easier than recruiting a new business. Therefore, Extension's BR&E program has offerings that help community leaders and communities to work together to identify barriers local businesses face as they try to survive and grow.

Inputs/Outputs: Stephen introduced and explained the program to the PECDA board. Having experience with this program, he helped develop the survey instrument and taught 3 separate training sessions for members conducting the interviews. Survey data was analyzed and a final report was submitted to the board members for review and implementation.

Outcomes/Impacts: The BR&E process leads the community through three major steps - Research, Prioritize and Implementation. The PECDA and business stakeholders will begin the process of implementing steps/actions identified from the survey to help existing businesses in Pershing County.

Education through Traditional Media

Situation: Stephen community situational analysis and published findings (Foster, 2010) revealed that the residents of Pershing County rated the Pershing County Extension Office's historic performance as mediocre, for meeting the educational and research needs of Pershing County residents - an average mean score of 3.09 on a 1-5 Likert scale (1 = poor performance, 3 = Neutral, and 5 = Excellent performance). In addition, when asked, "On a scale of 1 = low priority to 5 = high priority, to indicate their preference for receiving educational information, county residents stated a preference (mean = 3.62) for receiving information through traditional media outlets (newspaper, television, radio). Stephen responded to their stated desire by disseminating the majority of the educational materials he develops via traditional media, particularly local and regional newspapers.

Inputs/Outputs: During the past 7 years, Stephen has used news articles and interviews in traditional media to educate government officials, community leaders and Nevada residents about UNR's mission as a Land Grant University, the role of UNCE in achieving that mission and his role as an Extension Educator. This included publication in local weekly newspapers which have been distributed

throughout Pershing, Humboldt and Lander counties (circulation ~8,500). In addition, 3 articles have been published in the statewide trade journal publication, The Nevada Rancher (circulation ~2,000) and 4 articles were published in the Nevada Cattlemen's state-wide magazine, *Sage Signals*, which is distributed to all of the Nevada Cattlemen's membership.

Outcomes/Impacts: This year Stephen published 47 articles in local weekly newspapers which have been distributed throughout Pershing, Humboldt and Lander counties (circulation ~8,500). In addition, 3 articles have been published in the statewide trade journal publication, The Nevada Rancher (circulation ~2,000) and 4 articles were published in the Nevada Cattlemen's state-wide magazine, *Sage Signals*, which is distributed to all of the Nevada Cattlemen's membership. Since 2009, Stephen's first year as the Extension Educator in Pershing County, contact with the office by residents via office visits, phone contacts, email contacts and one-on-one farm/home visits have increased over 75%.

Family & Youth Development Programs

Bailie Malay is the Community-Based Instructor for the Pershing County Youth Development Program. She accepted the position in November of 2014.

The 4-H Youth Development program consists of 118 youth enrolled in 24 types of clubs. 24 youths participated in the Annual Pershing County Junior Livestock Show & Sale.

The 2016 4-H Year was celebrated with an Award and Recognition program; over 30 adults and youth participated in the evening with dinner sponsored by Pershing County 4-H Leader's Council. More than 75 youth were recognized for their participation and completion of 4-H projects in the 2016 year.

The Pershing County 4-H Youth Development program included 176 youth enrolled in 24 types of **Clubs** (ball, golf, martial arts, dog, market sheep, market swine, market goats, breeding goats, livestock judging, drama, foods, crafts and scrapbooking). Twenty-four Youth Participated in 70th Annual Pershing County Junior Livestock Show & Sale.

Pershing County also hosted a **Livestock Judging Invitational** with over 30 4-H youths from 6 different counties participating.

At the 2016 4-H **Central/NE Area Camp**, Pershing County 4-H had 3 teen counselors and many campers. 4-H Central/NE Area Camp provided a week of educational and social growth for nearly 100.

A Pershing County Community Club was designed for launch in 2016 which will include leadership training, quarterly community service projects and both a senior and a junior officer team.

Research, Creative Activity, Papers, Publications, Grant Activity:

Peer Reviewed Publications (Regional)

Foster, S.S., 2016. *Developing a Drought Management Plan*, Cattle Producer's Library, Drought and Other Natural Disasters Section CL920.

Peer Reviewed Extension Publications

Foster, S., S. Urbanowitz, H. Gatzke, B. Schultz, 2016. *Soil Properties, Part 3 of 3: Chemical Characteristics*, UNCE Fact Sheet 16-02.

Foster, S., B. Schultz, 2016. *Russian Knapweed Control Study, 2013-2015*, UNCE Special Publication 16-04.

Grants Received or Submitted

Emm, S., C. Bishop, H. Gatzke, S. Urbanowitz, L. Singletary, G. Cramer, P. Verburg, J. Davison, T. Harris, S. Lewis, F. Flavin, and S. Foster, 2015-2017. *Nevada beginning farmer and rancher renewal project*. USDA, National Institute of Food and Agriculture. \$692,433.

Swanson, S., McAdoo, Foster, S., *NV Riparian Service Team Project*, BLM. \$50,700. Account #1320-151-5270.

Foster, S.S., 2016-2017. Western Sustainable Agriculture Research Education, Professional Development Program Grant. \$22,950.

Sherman, S., McCuin, G., Lewis, S., Cervantes, J.C., Foster, S., McAdoo, K., Perryman, B., Schultz, B., Griggs, J., Rogers, J., Smith, A., Braate, J., Lossing, S., and Heguy, R., Sustainable Agriculture Research Producer/Professional Grant, \$68,542 (submitted).

Professional Presentations (presenter underlined):

International

Schultz, B., B. Perryman, J.K. McAdoo, and S. Foster. 2016. *Nevada's Range Management School – An Example for Translating the Science of Rangeland and Grazing Management to Pastoralists*. Invited Presentation to the Key Laboratory of Biogeography and BioResources in Arid Land, Xinjiang Institute of Ecology and Geography. Chinese Academy of Sciences. Urumqi, China. September 18, 2016.

National

Schultz, B. K. McAdoo, B. Perryman, S. Foster, J. Davison. 2016. *Nevada (USA) Range Management School – Adapting an American, Grazing Management Curriculum to other Continents*. International Conference, Society for Range Management. Corpus Christi, Texas. January 2016. With Abstract.

Non-Peer Reviewed Publications:

Statewide Trade Journal Articles:

Foster, S., 2016. *Calving Time Management*, Nevada Rancher, March 2016.

Foster, S., 2016. *A Pre-breeding Season Checklist*, Nevada Rancher, May 2016.

Foster, S., 2016. *Things to Consider When Culling Beef Cows*, Nevada Rancher, September 2016.

Foster, S., 2016. *Cold Weather Adjustments for Cows*, Sage Signal, January, 2016.

Foster, S., 2016. *Beef Labeling Program Gone*, Sage Signal, February, 2016.

Foster, S., 2016. *Grazing Forages After Frost Brings Dangers*, Sage Signal, September 2016.

Foster, S., 2016. *Low-Stress Weaning*, Sage Signal, October, 2016.

Research, Scholarly or Creative Effort in Progress
 Foster, S., S. Swanson, B. Schultz, J. K. McAdoo, 2015, *Nevada Youth Range Camp, Rangeland Plants: Plant Identification Guide*, UNCE Special Publication (Submitted 2015).

Service assignments and other professional activities:

Regional Service

Western Sustainable Agriculture Research Education, Nevada State Coordinator
 WBRC, Western Beef Resource Committee, University of Nevada Representative
 Society for Range Management, NV Section- Web Master
 USDA, Online Crop Weather Survey, Reporter

University/ College Service

Western Sustainable Research and Education, State Coordinator
 UNCE, Northern Area, Promotion/Tenure Chairman (2015-2016)
 UNCE Range Management Team
 UNCE Agricultural Team

County Service

Pershing County Economic Diversity Association, Board of Directors
 Big Meadows Conservation District, Board of Directors

Professional Associations

National Association of County Agricultural Agents, State President
 Society for Range Management
 American Society of Agronomy, Certified Crop Advisor

In-Service Activities

Ultrasound Pregnancy Detection in Cattle, Tillamook, OR, April 2016
 Ultrasound Carcass Trait Training, CUP Lab, Ames, IA, September, 2016
 IPM Management Workshop, Western Alfalfa and Forage Symposium, December 2016
 California Alfalfa and Forage Symposium, Nevada, December 2016

Fiscal Summary

2016-17 Pershing County Extension Budget

Income:

Current Real Property Taxes.....\$62,767.00

Current Personal Property Taxes.....	<u>\$20,333.00</u>
Total Income.....	\$83,100.00
Expenses:	
Salary Expenses.....	\$52,599.00
Services & Supply Expenses.....	<u>\$24,417.00</u>
Total Expenses.....	\$77,016.00
Net Revenue/Expenses.....	+ \$ 6,084.00



Stephen S. Foster
Extension Educator, Associate Professor
UNCE, Pershing County

<p>The University of Nevada, Reno is committed to Equal Employment Opportunity/Affirmative Action in recruitment of its students and employees and does not discriminate on the basis of race, color, religion, sex, age, creed, national origin, veteran status, physical or mental disability, and sexual orientation. The University of Nevada, Reno employs only United States citizens and aliens lawfully authorized to work in the United States. Women and under-represented groups are encouraged to apply.</p>
--

Rept: PB2800		PERSHING COUNTY			
Run: 01/28/16 13:10:55		REVENUE REPORT FOR THE MONTH OF: 06/2016			
FUND 007 AGRICULTURAL EXTENSION					
Account #	Account Description	2014 Actual	2015 Actual	2016 Budget	2016 To Date
30	TAX REVENUE				
30500-000	CURRENT REAL PROP. TX	52,552.88	58,114.57	62,767.00	36,415.57
30585-000	DEL. REAL PROP. TAX	1,208.97	1,944.73		524.13
30600-000	CURRENT PERSONAL PROP. TX	20,021.98	17,429.63	20,333.00	4,275.68
30685-000	DEL. PERSONAL PROP. TAX	27.18	1,694.21		180.72-
30	TOTAL *****				
	TAX REVENUE	73,811.01	75,794.72	83,100.00	41,034.66
32	INTERGOVERNMENTAL				
32430-000	KNAPWEED CNTRL. STUDY GRT	812.49	300.00		
32433-000	UNCE GRAZING CLASS REV.		10,015.05		
32	TOTAL *****				
	INTERGOVERNMENTAL	812.49	10,315.05		
39					
39821-000	TRANSFER FROM PILT				
39	TOTAL *****				
FUND 007 TOTAL *****					
	AGRICULTURAL EXTENSION	74,623.50	86,109.77	83,100.00	41,034.66
	Grand Totals:	74,623.50	86,109.77	83,100.00	41,034.66

Rept: PB2700		PERSHING COUNTY			
Run: 01/28/16 13:11:02		ESTIMATED EXPENDITURES FOR 2017			
FUND 007 AGRICULTURAL EXTENSION					
Account #	Account Description	2014 Actual	2015 Actual	2016 Budget	06/2016 To Date
DEPT 059 AG EXT					
51	SALARY EXPENSE				
51010-000	SALARIES & WAGES	33,045.17	33,195.20	33,669.00	19,386.40
51080-001	EMPLOYEE BE/PERS	4,952.83	8,547.74	9,427.00	5,370.33
51080-002	EMPLOYEE BE/GROUP INSURA	6,813.24	7,256.76	7,500.00	5,343.52
51080-003	EMPLOYEE BE/MEDICARE	466.75	475.27	488.00	277.59
51080-005	EMPLOYEE BE/WORKERS COMP	1,115.00	1,157.00	1,515.00	323.00
51	TOTAL SALARY EXPENSE	46,392.99	50,631.97	52,599.00	30,700.84
52	SERVICE& SUPPLIES				
52100-000	MISCELLANEOUS-SERV/SUPP	286.06	420.91	250.00	51.71
52100-023	MISCELLANEO/PHONE/FAX	3,518.51	2,504.41	3,600.00	1,602.64
52100-024	MISCELLANEO/OFFICE SUPPL	1,324.04	1,686.87	1,500.00	418.18
52100-026	MISCELLANEO/POSTAGE	134.80	41.96	50.00	21.00
52150-000	VEHICLE EXPENSE	2,896.44	1,873.07	2,800.00	424.46
52290-000	COPY MACHINE	1,725.51	1,683.28	3,000.00	967.38
52490-000	TRAVEL	854.24	903.19	1,300.00	718.14
52491-050	TRAINING/REGISTRATION	127.50	90.00	400.00	130.00
52720-000	KNAPWEED CNTRL. STUDY GRT	812.49	300.00		
52724-000	UNCE GRAZING CLASS GRANT		10,015.05		
52911-000	REMITTANCE TO O. GOVTS.	13,629.50	11,073.27	11,517.00	2,553.75
52	TOTAL SERVICE& SUPPLIES	25,309.09	30,592.01	24,417.00	6,887.26
53	CAPITAL OUTLAY				
53900-070	CAPITAL OUT/EQUIPMENT	977.97			
53	TOTAL CAPITAL OUTLAY	977.97			
DEPT 059					
	TOTAL AG EXT	72,680.05	81,223.98	77,016.00	37,588.10
Net Rev to Expense Fund: 007		1,943.45	4,885.79		3,446.56