



# University of Nevada Cooperative Extension

## **Lander County**

815 N. 2<sup>nd</sup> Avenue  
Lander, Nevada 89820  
phone (775) 635-5565  
fax (775) 635-8309  
[www.unce.unr.edu/counties/lander](http://www.unce.unr.edu/counties/lander)

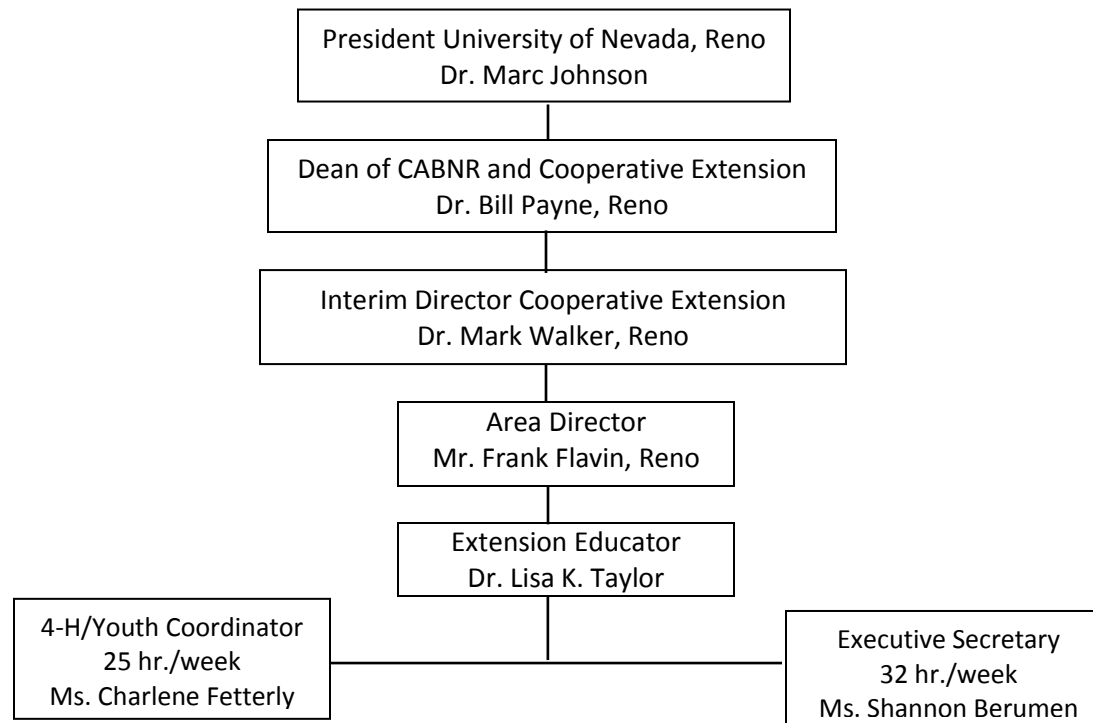
## **2016 Accomplishment Report**

### **Summary Description**

The Cooperative Extension Fund was established to allocate a 1 cent ad valorem tax apportioned to, and specifically appropriated for, statutorily established educational programs focusing on agriculture; community development; health and nutrition; horticulture; personal and family development, and natural resources. Cooperative Extension identifies critical needs, and designs educational programs and activities to address those needs. Extension provides ongoing program evaluation to ensure educational offerings impact and improve lives of Lander County residents through a planned educational process. As an outreach partnership of the University of Nevada, Lander County and USDA, Cooperative Extension provides research-based information to local residents.

COOPERATIVE EXTENSION'S MISSION IS TO DISCOVER, DEVELOP,  
DISSEMINATE, PRESERVE AND USE KNOWLEDGE TO STRENGTHEN THE  
SOCIAL, ECONOMIC AND ENVIRONMENTAL WELL-BEING OF PEOPLE.

## University of Nevada Cooperative Extension Lander County Organizational Chart



# University of Nevada Cooperative Extension

## 2016 Lander County Accomplishment Report

### Background

University of Nevada Cooperative Extension (UNCE) is the University – Lander County partnership that puts university research to work in our Lander County rural settings; on public rangelands; in schools; on family farms and ranches; and in our homes, workplaces and communities. Cooperative Extension assists the County and its citizens in community engagement, providing youth development activities, assisting agricultural producers in farm and range management, providing best management practices to protect our precious natural resources, providing educational programming for improved health and nutrition and preparing high-risk youth and vulnerable families for the world of work.

Since 1914 Cooperative Extension has played a major role in the outreach teaching, research and service of the University for the benefit of Nevada's counties including Lander County. It is the college that connects citizens with the University, provides a Nevada System of Higher Education (NSHE) presence in Lander County and fulfills the statewide land-grant mission of the University of Nevada. UNCE was founded in 1914 as a partnership between the federal government, land-grant universities and county governments throughout the United States. Cooperative Extension exists through land-grant universities in all 50 states. UNCE's purpose, as stated in the Nevada Revised Statutes (NRS 549.010), is to "conduct educational, research, outreach and service programs pertaining to agriculture, community development, health and nutrition, horticulture, personal and family development and natural resources in the rural and urban communities of Nevada." The Statute states that State "funds to carry out the provisions of this chapter shall be provided by direct legislative appropriation from the General Fund." Federal enabling legislation for UNCE is found in the Smith-Lever Act. This law requires a State match in order to receive Federal funds. These funds are appropriated through the USDA/NIFA budget. Counties, such as Lander County, contribute through a tax levy pursuant to NRS 549 of not less than 1 cent and no more than 5 cents on each \$100 of taxable property in the county.

### Programs

Educational programs developed by Cooperative Extension utilize a *needs assessment* methodology to identify issues at the community, county and area level. From January 1 through December 11, 2016, support and programming were carried out by Charlene Fetterly, Youth Coordinator, and Shannon Berumen, Executive Secretary, during which time a search for the county Extension Educator was conducted. On December 12, 2016, Lisa K. Taylor, a Ph.D. candidate with Oklahoma State University, started as the Extension Educator in Lander County with the goal of conducting a formal needs assessment and implementing its outcomes including the development of educational programs, conducting research, and providing outreach and education in 2017. In 2016, significant activities in the county included 4-H Youth Development, agriculture, health, and horticulture.

#### A. 4-H Youth Development.

Charlene Fetterly, the Lander County Youth Coordinator, provided direct leadership for the Lander County 4-H program. In 2016, there were 61 youth enrolled and seven certified adult volunteer leaders associated with two 4-H clubs focused on six project areas in the county.

Overall program participation increased by 16% in the past year (Lander County ES237 Reports from 2014-2015 and 2015-2016).

1. **Programs and Activities.** 4-H club meetings were conducted weekly and/or monthly (depending on the time of year in 2016) and included exploration of numerous science, technology, engineering, and math (STEM) concepts during both competitive and noncompetitive activities. Members' projects addressing a variety of interests were shooting sports, fiber arts, small animal, large animal, horse, and beginning and advanced Lego Robotics, among others.
2. **Lander County Annual 4-H Competition Events**
  - First Tech Challenge (FTC) Competition in Las Vegas
  - Reno Robotics Competition
  - Tri-county Fair in Winnemucca (Humboldt County)
3. **Other Lander County 4-H Events**
  - Club Livestock/Project Tours
  - Northern/Central Area 4-H Camp
  - County 4-H Achievement Night
  - Individual Club Achievement Nights

## **B. Agriculture.**

Livestock programs helped producers increase the profitability of their operations through improved nutrition, reproduction, genetics, health, management and marketing. Programming integrated content, expertise and teaching methodology to develop a comprehensive approach to effective education.

***Cattleman's Update.*** The *Cattlemen's Update* is an annual educational program offered by the University of Nevada Cooperative Extension for beef cattle producers. In 2016, program topics focused on U.S. dietary guidelines and meat consumption, monitoring drought conditions, market cattle trends, options for pregnancy testing in cows, a program overview of the UNR meat science and food safety, rangeland monitoring app and an update on animal health and disease. Subject matter selection was based on a needs assessment of Nevada beef cattle producers and on concerns and trends expressed by the leaders of the beef cattle industry in the United States.

## **C. Health.**

Cooperative Extension's health programs target at-risk populations to help youth and adults develop healthy eating habits and lifestyles, preventing chronic diseases and saving health-care costs for the entire community.

**Radon Education and Testing in Lander County Homes.** Countywide radon education was accomplished through a variety of citizen events promoted through articles printed in local newspapers, flyers posted in local businesses and displayed on public bulletin boards, and announcements appearing on an electronic messaging display located prominently in Battle Mountain. In January, the Lander County Board of Commissioners signed a proclamation

bringing attention to the impacts of radon exposure and encouraging residents to pick up a radon testing kit at no charge in January and February from the Extension office. Radon research-based information, found at [www.unce.unr.edu/radon](http://www.unce.unr.edu/radon), and program handouts highlighted the hazards of radon, how to test radon levels, recommended action levels, and radon mitigation procedures. During the rest of the year, short-term test kits were available for a nominal fee and radon training was provided during personalized sessions at the Extension office.

**D. Horticulture.**

Horticulture includes a variety of topics important to residents of Lander County. These include landscape plantings, houseplants, gardening, turf grass management, irrigation technology, urban forestry, garden entomology and pest management, general and structural entomology, and vertebrate pest management, and growing plants in a short growing season, among others. The Lander Cooperative Extension office responds to hundreds of horticultural questions annually.

**Grow Your Own Gardening Series.** The *Grow Your Own* series provides horticultural and gardening information to homeowners who desire to become successful backyard food producers in Nevada’s unique high-desert climate. In 2016, spring and fall series of workshops were presented to Lander County residents. In both series, eight two-hour sessions covered topics such as vegetable cultivar selections, composting, harvesting and preserving. Fifteen participants attended sessions in Lander County.

**Fiscal Summary**

Revenues	(1) Actual Prior Year Ending 6/30/15	(2) Estimated Current Year Ending 6/30/16	Budget Year Ending 6/30/17 (3) Tentatively Approved	Budget Year Ending 6/30/17 (4) Final Approved
Taxes: Ad Valorem	84,508	100,291	86,916	86,916
Intergovernmental Revenue:				
Federal Grants	0	0	0	0
Consolidated Tax	0	0	0	0
Other	0	0	0	0
Miscellaneous:				
Interest	0	0	0	0
Other	0	0	0	0
Other Financing Sources:				
Transfers in:				
Beginning Fund Balance:				
Reserved				
Unreserved	241,311	267,590	286,935	286,935
<b>Total Beginning Fund Balance</b>	<b>241,311</b>	<b>267,590</b>	<b>286, 935</b>	<b>286,935</b>

University of Nevada Cooperative Extension – Lander County Accomplishment Report 2016

<b>Total Available Resources</b>	<b>325,819</b>	<b>367,881</b>	<b>373,851</b>	<b>373,851</b>
<b>Expenditures by Function and Activity</b>	<b>(1) Actual Prior Year Ending 6/30/15</b>	<b>(2) Estimated Current Year Ending 6/30/16</b>	<b>Budget Year Ending 6/30/17 (3) Tentatively Approved</b>	<b>Budget Year Ending 6/30/17 (4) Final Approved</b>
Salaries and Wages	31,568	34,070	35,605	35,605
Employee Benefits	12,496	19,095	19,655	19,655
Services & Supplies	14,165	33,340	33,340	33,340
Capital Outlay	0	0	0	0
<b>Activity Total</b>	<b>58,229</b>	<b>86,505</b>	<b>88,600</b>	<b>88,600</b>
Other Uses: Contingency (Not to exceed 3% of Total Expenditures – All Functions)	-	-	-	-
Operating Transfers Transfers Out: Bond Income Fund	-	-	-	-
Ending Fund Balance: Reserved Unreserved	267,590	281,376	285,251	285,251
<b>Total Ending Fund Balance</b>	<b>267,590</b>	<b>281,376</b>	<b>285,251</b>	<b>285,251</b>
<b>Total Fund Commitments and Fund Balance</b>	<b>325,819</b>	<b>367,881</b>	<b>373,851</b>	<b>373,851</b>